



# 15355 Fatima Drive

Laredo, Texas

## Key facts

Property type	Industrial space
Building size	223,395 SF
Space available	223,395 SF



## Property Features

Building Size: ± 223,395 SF

Configuration: Rear Load

Building Depth: 260 Feet

Column Spacing: 50' x 52' (typ.)

Dock Doors: 40 - 9'x10' (Dock High) 8 - 9'x10' (Grade Level)

Sprinklers: ESFR

Truck Parking: 104 Stalls

Security: Gated/Fully Fenced Lot

Office Size: ± 2,569 SF

Clear Height: 32 Feet

Truck Court Depth: 170 - 220 Feet

Speed Bay Size: 60' Speed Bay

Loading Ramps: 2 - 12'x14' (Ramped)

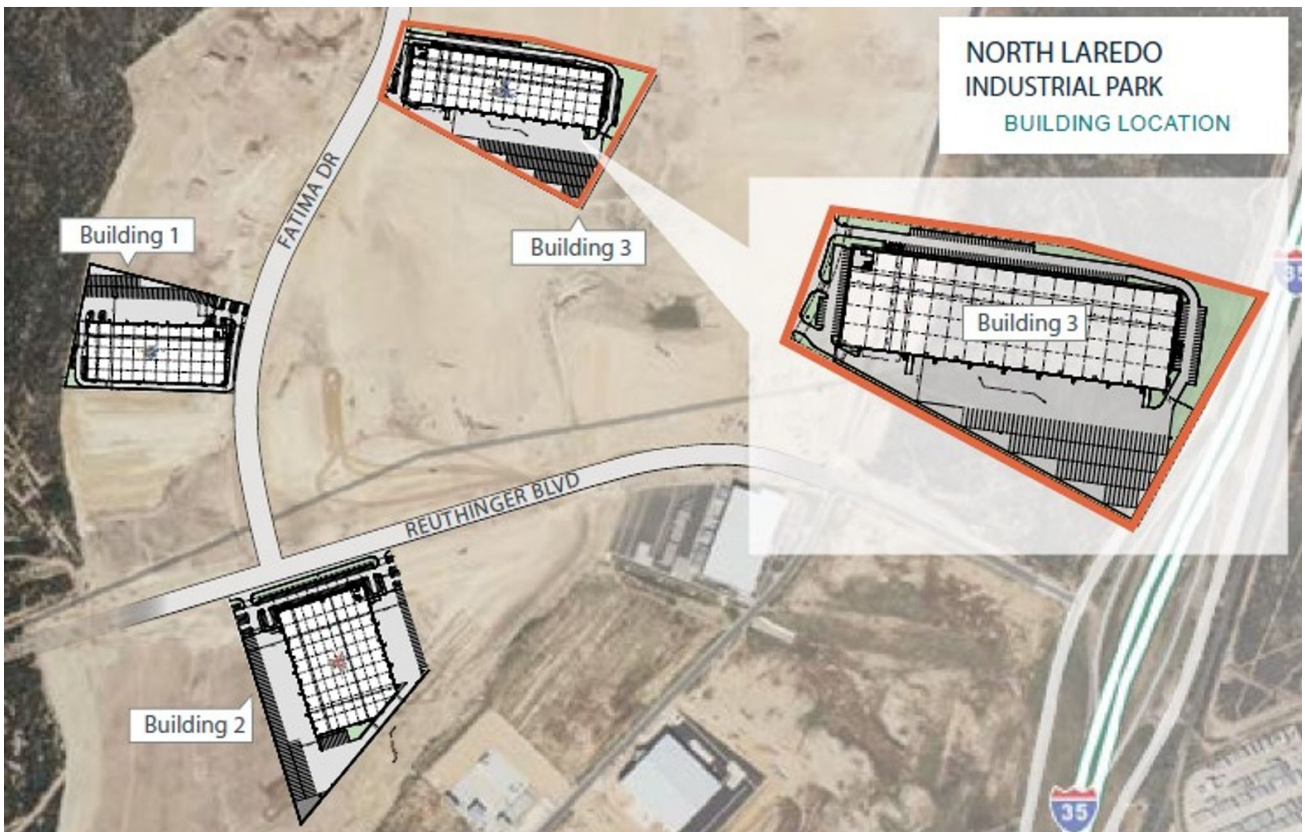
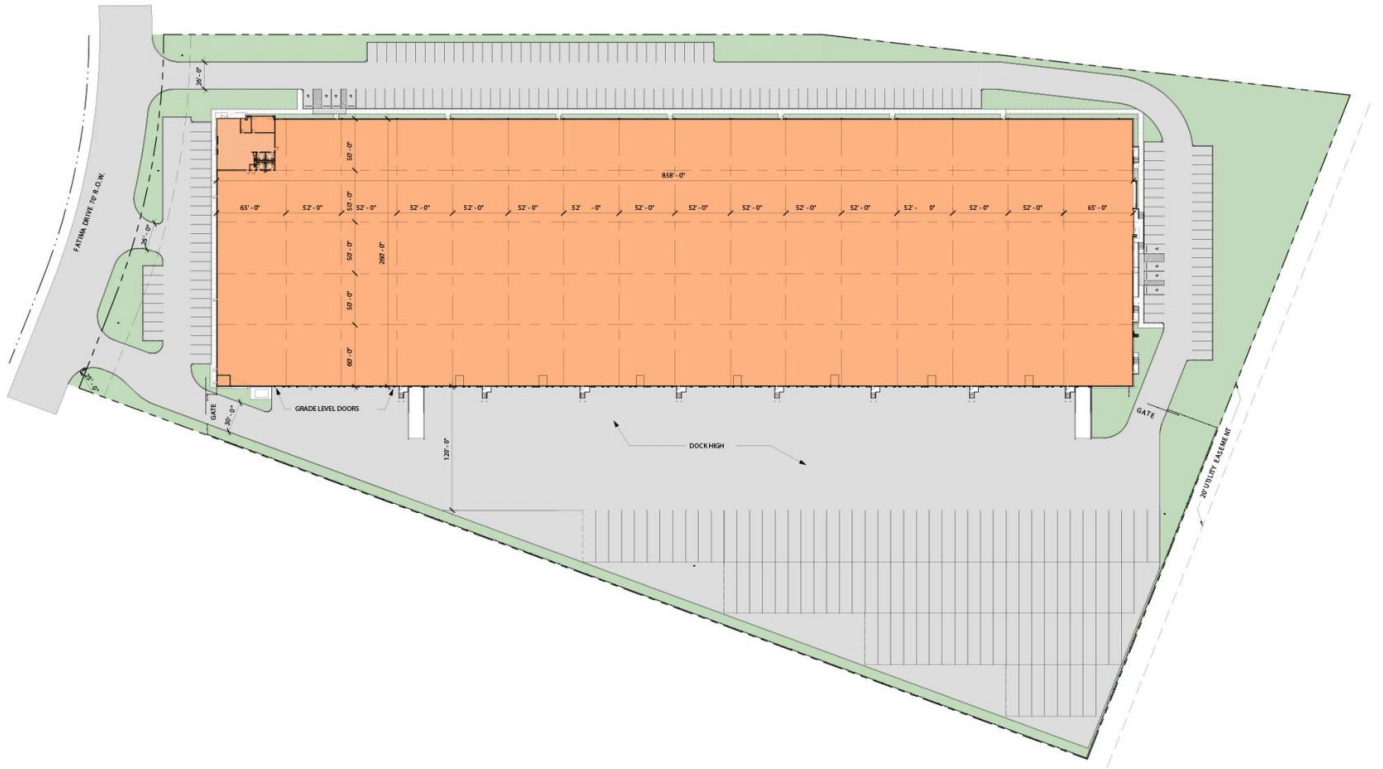
Auto Parking: 180 Stalls

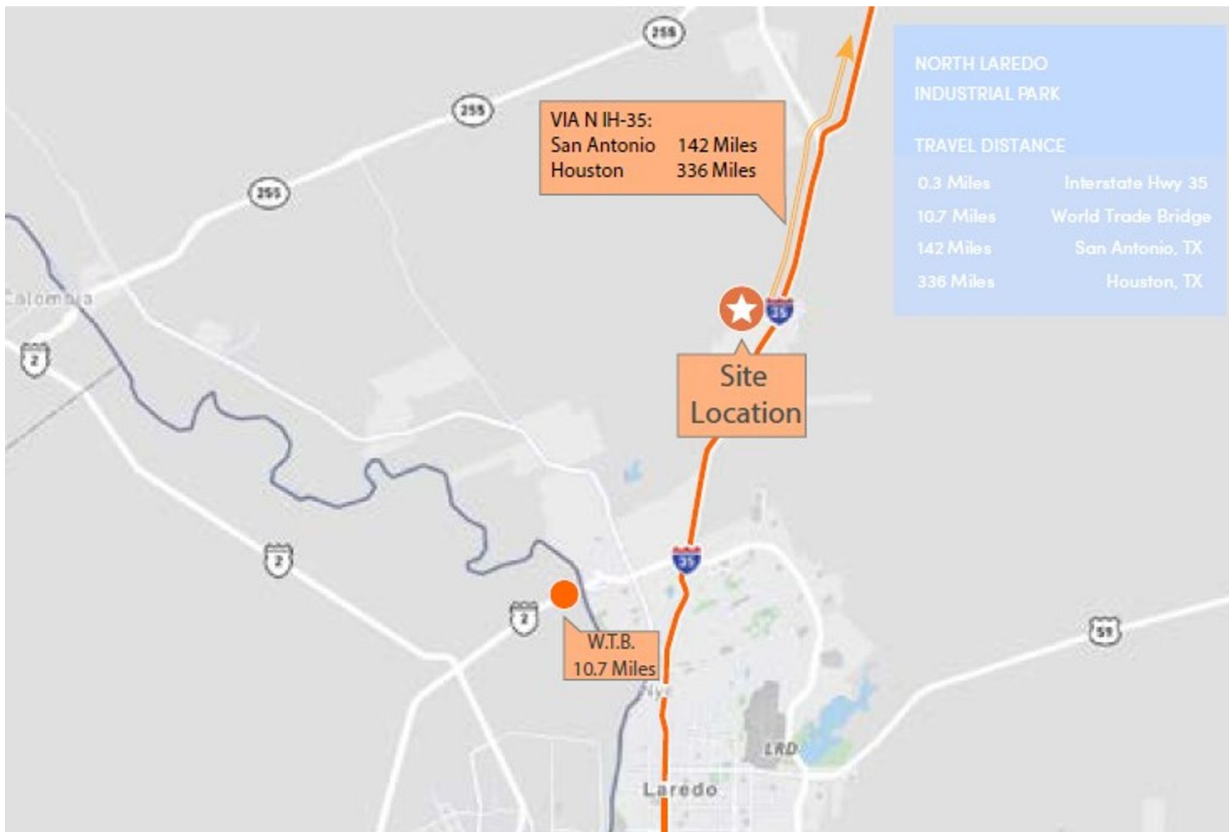
Power: 2,000 Amps (Expandable)

Lighting: 2 LED Lights per Warehouse Bay

## Photos and Floorplans







## Location

### Population

Total Population	31,650
Total Labor Force	15,759
Unemployment Rate	
Median Household Income	\$89,236
Warehouse Employees	88
High School Education	62.2%



## Contact us

Learn more about this property or schedule a tour by reaching out to our local investment and leasing officer.



**Barney Sinclair**

+1 (214) 476-6554

[barney.sinclair@eqpartners.com](mailto:barney.sinclair@eqpartners.com)