

2300 S. Eagle Road, Meridian, ID

Rockridge Center Building, in Silverstone Park



SPACE DETAILS

SPACE: 6,185 SF
AVAILABLE: August 2026
LAYOUT: Excellent end-cap suite with private entry. Features include a welcoming lobby, large conference room, 21 private offices (most with exterior glass), open work area, breakroom, IT room, and private restrooms. New carpet and paint planned.

HIGHLIGHTS

- Centrally located in the Boise Valley, I-84 (Exit 46) less than one mile
- Eagle Road frontage and access
- Professional Silverstone Park, provides service and food amenities in close proximity
- Private entry into tenant space
- Excellent building signage available

PROPERTY FEATURES

BLDG TYPE: Office
BLDG SIZE: 22,054 Square Feet
FLOORS: Single Story
PARKING: 5/1,000 SF Leased
LEASE TYPE: Full Service, Less Tenant Janitorial
ZONING: City of Meridian, CC
OWNER: Sundance Investments, L.L.L.P.

- Generous parking included
- Monument sign on Eagle Road
- Twelve (12) traffic outlets in park, two (2) traffic controlled intersections
- Proportionate use of Silverstone Amenity Center five (5) meeting and board rooms

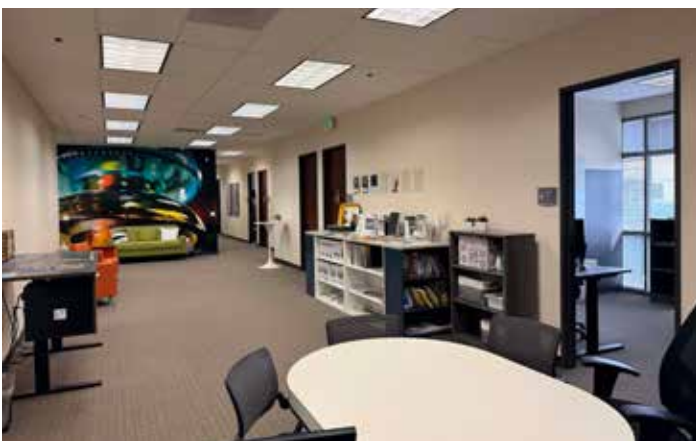
Call: 208-322-7300

WWW.SUNDANCECO.COM



2300 S. Eagle Road, Meridian, ID

Rockridge Center Building, in Silverstone Park



Call: 208-322-7300

WWW.SUNDANCECO.COM



2300 S. Eagle Road, Meridian, ID

Rockridge Center Building, in Silverstone Park



Call: 208-322-7300

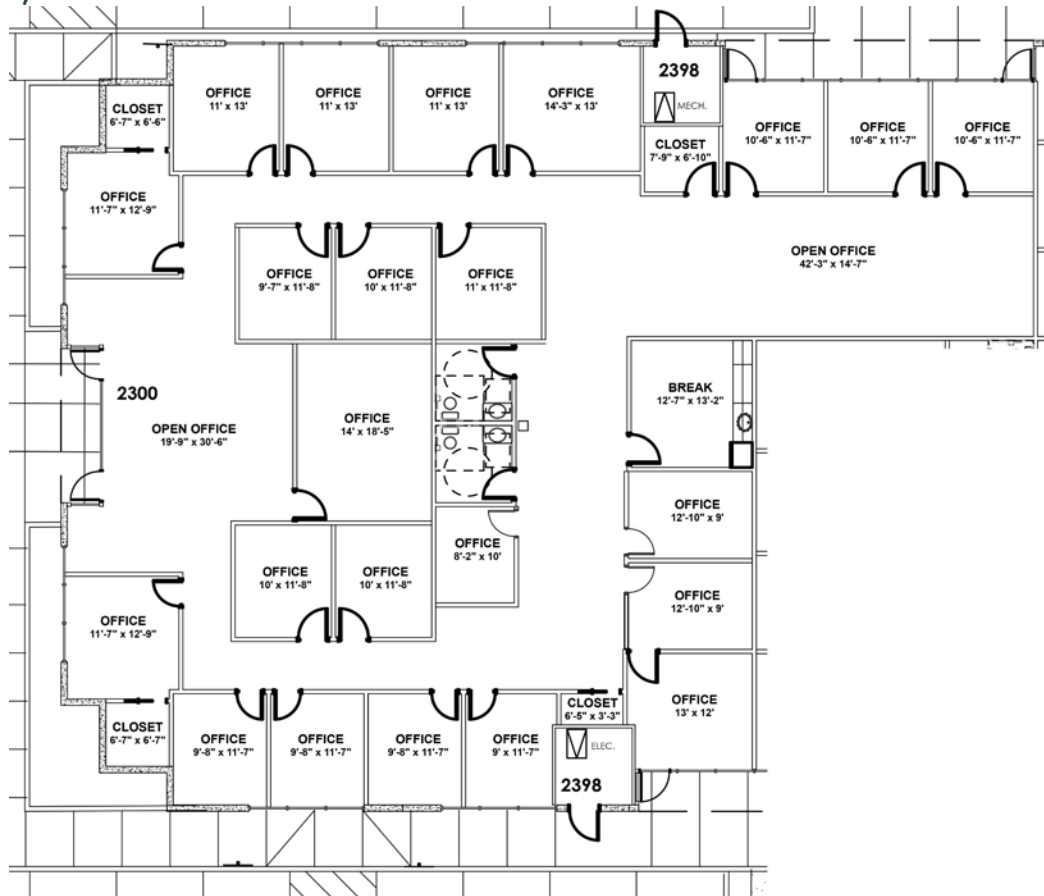
WWW.SUNDANCECO.COM



2300 S. Eagle Road, Meridian, ID

Rockridge Center Building, in Silverstone Park

Floor Plan 6, 185 SF



Call: 208-322-7300

WWW.SUNDANCECO.COM

