

BUILD TO SUIT

MEDICAL OFFICE



14555 C HAZEL DELL PKWY, CARMEL, IN 46033



PLUM CREEK || BUILD TO SUIT

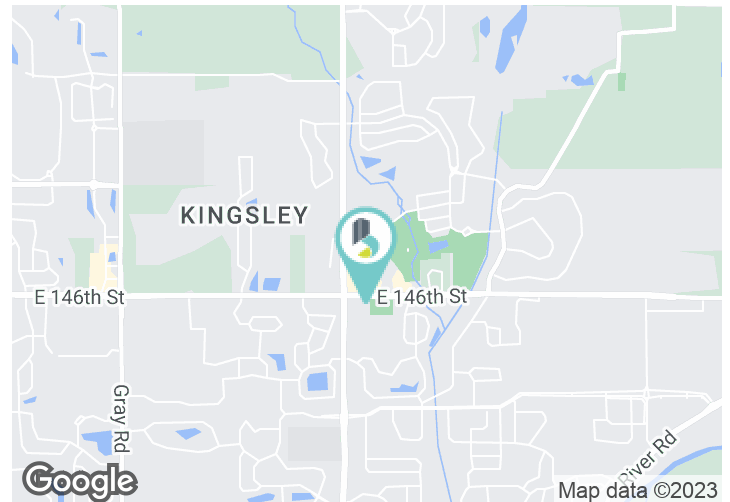


PROPERTY HIGHLIGHTS

- Class A medical office / general office
- Convenient curbside parking
- Excellent access from 146th Street & Hazel Dell Parkway

OFFERING SUMMARY

Lease Rate:	TBD
Available SF:	Up to 10,125 SF



BRADLEY COMPANY
 310 E. 96th St., Suite 100
 Indianapolis, IN 46240
 317.663.6000

TOM OSBORNE, SIOR
 Principal
 317.258.0179
 tosborne@bradleyco.com

KIM HARTMAN, CPM
 Senior Vice President
 317.716.5895
 khartman@bradleyco.com



BRADLEYCO.COM



14555 C HAZEL DELL PKWY, CARMEL, IN 46033

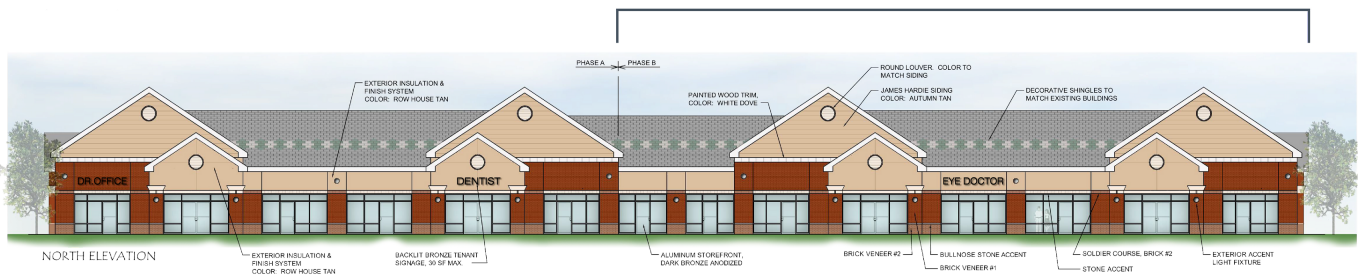
BUILD TO SUIT

MEDICAL OFFICE



Existing Building

NEW CONSTRUCTION



Proposed New Building

TOM OSBORNE, SIOR
Principal
317.258.0179
tosborne@bradleyco.com

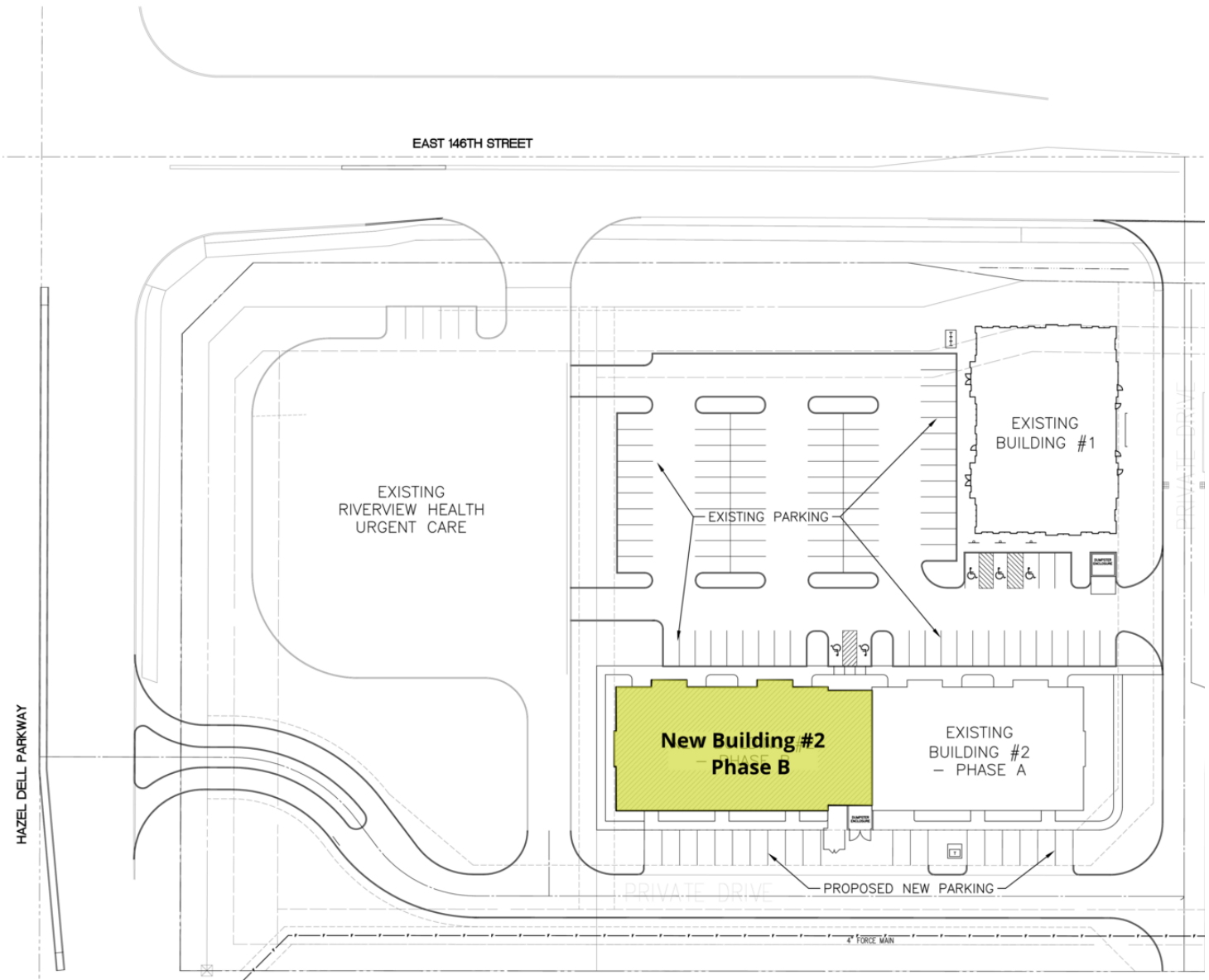
KIM HARTMAN, CPM
Senior Vice President
317.716.5895
khartman@bradleyco.com



14555 C HAZEL DELL PKWY, CARMEL, IN 46033

BUILD TO SUIT

MEDICAL OFFICE



TOM OSBORNE, SIOR
 Principal
 317.258.0179
 to Osborne@bradleyco.com

KIM HARTMAN, CPM
 Senior Vice President
 317.716.5895
 khartman@bradleyco.com