



## CONTACT:

**Jordan Kim**

Principal  
jordan.kim@blokkcre.com  
912.667.5887

**Mason Spivey**

Advisor  
mason.spivey@blokkcre.com  
912.675.7002

# FOR LEASE

*Additional Yard Space  
Available*

**425 TELFAIR RD (Yard B) SAVANNAH, GA 31415  
2 ACRES W/ OFFICE TRAILER**



Tremont Rd

Telfair Rd

# PROPERTY SUMMARY

**2 ACRES OF IOS YARD W/ OFFICE TRAILER | ADDITIONAL YARD SPACE AVAILABLE**

***Lease Rate: Upon Request***

*425 Telfair Rd (Yard B) Savannah, GA 31415*

Blokk Commercial Real Estate is pleased to present Yard B at 425 Telfair Rd, a 2-acre industrial outdoor storage yard ideally suited for trailer parking, equipment storage, and other industrial uses. The site offers a flexible and functional layout for a variety of logistics and transportation users. An additional 3-acre yard with a 4,920 SF cross-dock facility and approximately 1,000 SF of office space is also available and can be leased together or separately to accommodate larger operational requirements. Located in the core of Savannah's industrial corridor, the site provides immediate access to major logistics routes, including I-16 ( $\pm 1.5$  miles), I-95 ( $\pm 6.5$  miles), Ocean Terminal ( $\pm 3.6$  miles), and Garden City Terminal ( $\pm 4.2$  miles).

# INVESTMENT HIGHLIGHTS

## Yard B:

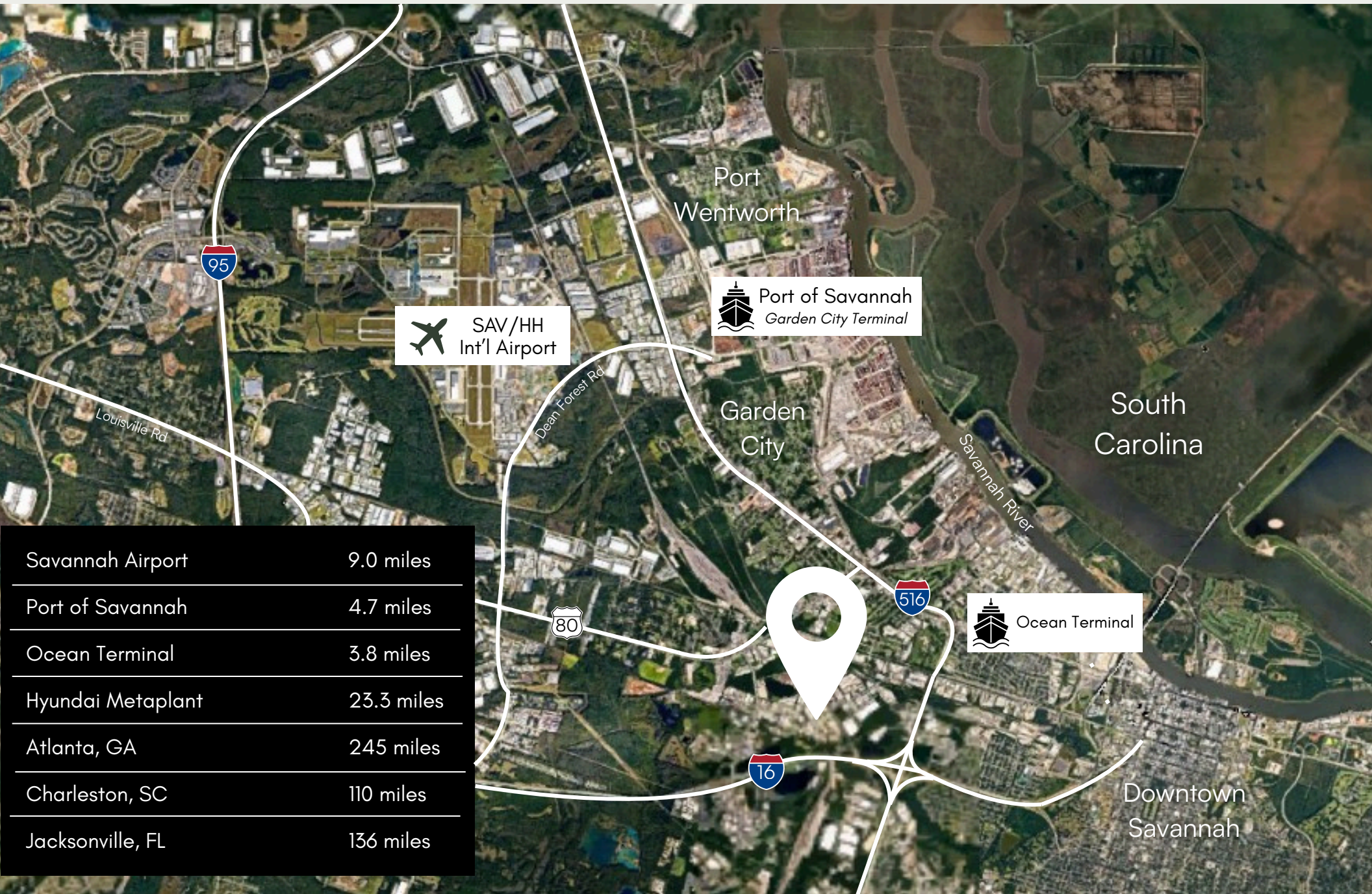
- 2-acre site
- 672 SF office trailer
- 3-acre adjacent yard available
- Zoning: P-I-2 (Planned Heavy Industrial)
- Located outside of the flood hazard area (X zone)
- Close proximity to major logistics routes and terminals
- **Available August 1, 2026**



# YARD B: 2 ACRE YARD W/ OFFICE



# LOCATION OVERVIEW



SAV/HH  
Int'l Airport



Port of Savannah  
Garden City Terminal



Ocean Terminal

Savannah Airport	9.0 miles
Port of Savannah	4.7 miles
Ocean Terminal	3.8 miles
Hyundai Metaplant	23.3 miles
Atlanta, GA	245 miles
Charleston, SC	110 miles
Jacksonville, FL	136 miles

# BIO/CONTACT



## **JORDAN KIM**

Principal

Jordan.kim@blokkcre.com

912.667.5887

## **BACKGROUND**

Jordan Kim began his career at NAI Mopper Benton as a commercial real estate advisor. After learning the greater Savannah market, he joined Meybohm Commercial Properties where he specialized in investment and development sales. Jordan opened the doors to Blokk Commercial Real Estate in 2022.

The company has a history of completed transactions (over 200) and volume over \$260M. Blokk served as the master broker for Tidal Wave Auto Spa. Additionally, the firm has executed transactions across the country. Jordan is an active investor and currently serves as the President of BCRE.

## **EDUCATION**

Georgia Southern University

College of Business and Finance-Bachelors of Finance Degree

# BIO/CONTACT



## **MASON SPIVEY**

Advisor

Mason.spivey@blokkcre.com

912.675.7002

### **BACKGROUND**

Mason Spivey is a commercial real estate advisor with a hands-on background in residential sales, construction, and hospitality. This diverse foundation gives him a grounded understanding of how properties function—structurally, commercially, and from a real-world, customer-facing standpoint.

A former collegiate baseball player at Georgia College & State University, Mason brings a competitive, disciplined mindset rooted in hard work and persistence. Outside of real estate, he enjoys working out and staying active, carrying that same drive into every client relationship.

### **EDUCATION**

Georgia College & State University  
BS Financing and BBA Marketing