

# 12-23 JACKSON AVE

Long Island City | New York



# Space Description

## Size

First Floor 4,264 sf

Basement 3,930 sf

Frontage 19 feet

## The Space Features

Prominent Frontage Along Jackson Avenue in the Heart of Long Island City

Distinctive Black Canopy Provides Exceptional Visibility and Branding Presence

Multiple Oversized Glass Storefronts Deliver Abundant Natural Light and Exposure

Existing Hospitality Infrastructure Featuring a Built-Out Bar Area

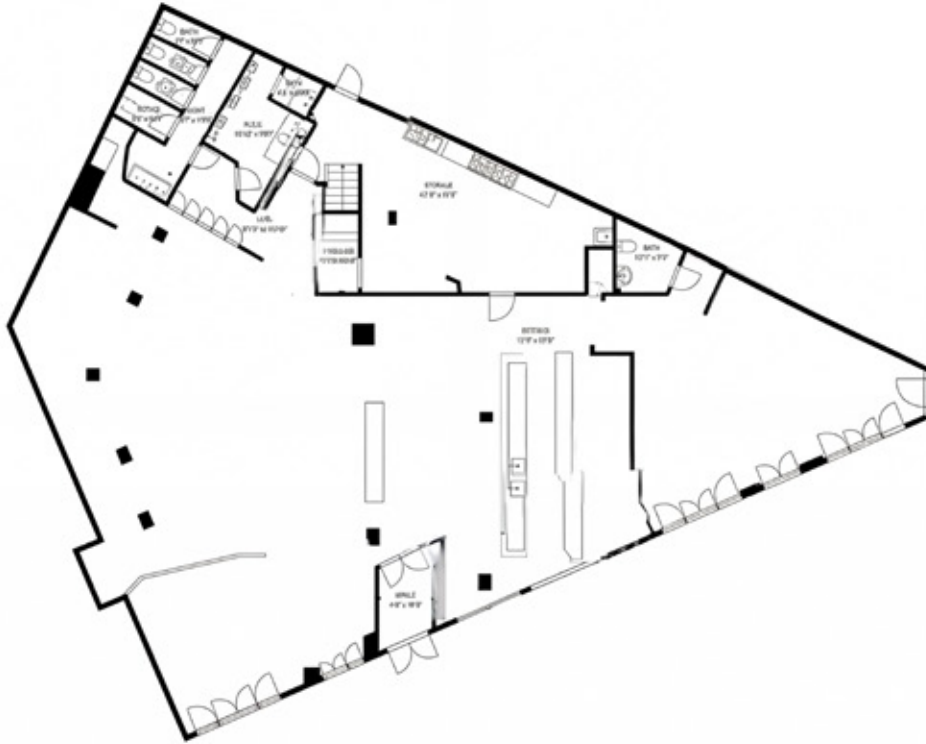
Soaring Ceilings with Dramatic Wood-Accented Design Elements

Ideal for Restaurant, Hospitality, Retail, Showroom, Medical, or Experiential Concepts



# Floor Plans

## 1st Floor Plan

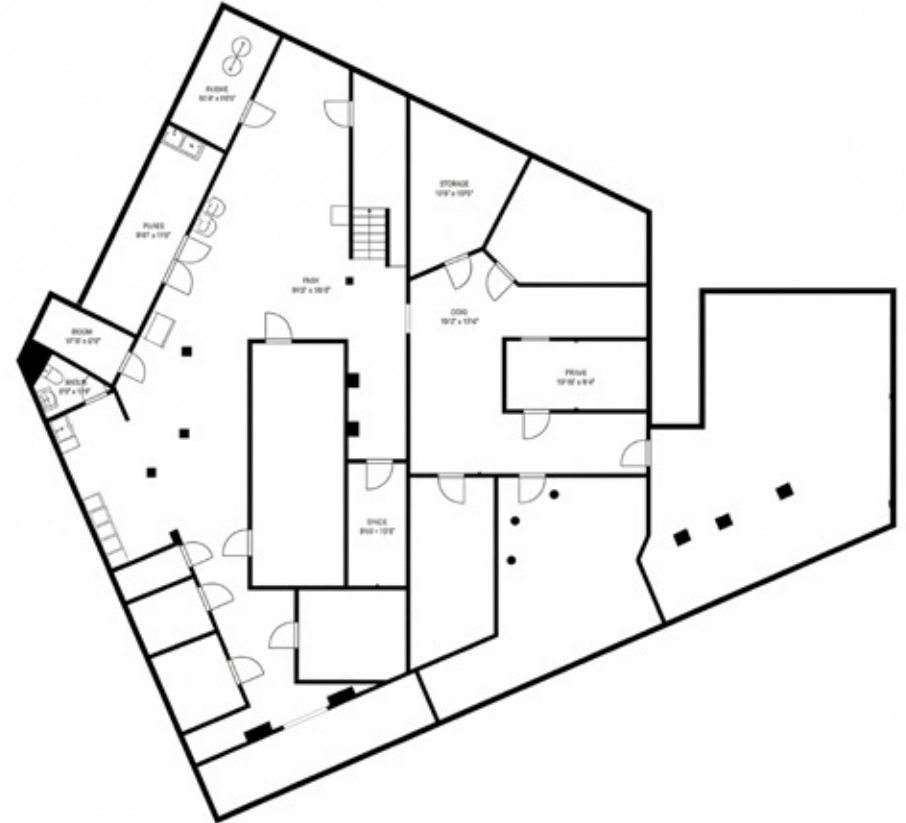


**TOTAL: 8,194 sq. ft**

1st Floor: 4,264 sq. ft

Basement: 3,930 sq. ft

## Basement Plan



**EXCLUDED AREAS:**

**STORAGE: 418 sq. ft, UTILITY: 90 sq. ft,**

**WALLS: 299 sq. ft**

**HAZ ALIESSA**

646.520.9664

haz@lee-associates.com

**THOMAS KAZAS**

412.708.1189

tkazas@lee-associates.com

All information supplied is from sources deemed reliable and is furnished subject to errors, omissions, modifications, removal of the listing for sale or lease, and to any listing conditions, including the rates and manner of payment of commissions for particular offerings imposed by principals or agreed by this Company, the terms of which are available to principals or duly licensed brokers. Any square footage dimensions set forth are approximate.

 **LEE &  
ASSOCIATES**