

Industrial Building For Lease

25410 Clay Road, Katy, TX 77493

ENERGY PARK WEST BUSINESS PARK

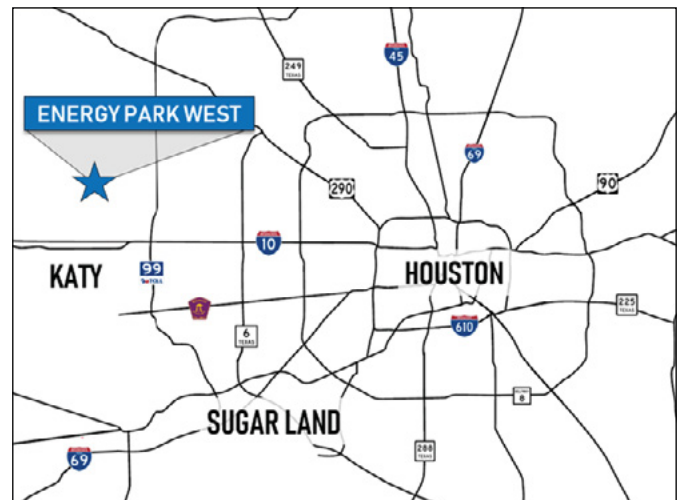


25,000 SF BUILDING
10,000 SF Offices on two levels
15,000 SF Warehouse

FOR LEASE

PROPERTY HIGHLIGHTS

- Harris County, outside of Katy city limits
- 2.54 Acres of Land, fenced and secured, laydown yard in rear
- Grade level loading with 3 exterior overhead rollup doors
- Detention provided outside of lease tract
- Water well and septic systems; no MUD taxes
- Built in 2016; remodeled in 2019
- Available: November 1, 2026
- Lease Type: NNN
- Term: 10 years
- Rental Rate: \$1.45/SF/Mo



PROPERTY IS OCCUPIED; TOURS BY APPOINTMENT ONLY

FOR INFORMATION, CONTACT

Mark W. Kidd, Sr.

President

(713) 545-1901

mark@mkiddproperties.com

M Kidd Properties, Inc.

3501 W Alabama

Suite 105, Houston, TX 77027

www.mkiddproperties.com

Industrial Building For Lease

25410 Clay Road, Katy, TX 77493

ENERGY PARK WEST BUSINESS PARK



FOR LEASE



FOR INFORMATION, CONTACT

Mark W. Kidd, Sr.
President
(713) 545-1901
mark@mkiddproperties.com

M Kidd Properties, Inc.
3501 W Alabama
Suite 105, Houston, TX 77027
www.mkiddproperties.com

Industrial Building For Lease

25410 Clay Road, Katy, TX 77493

ENERGY PARK WEST BUSINESS PARK



FOR LEASE



PROPERTY IS OCCUPIED; TOURS BY APPOINTMENT ONLY

FOR INFORMATION, CONTACT

Mark W. Kidd, Sr.

President

(713) 545-1901

mark@mkiddproperties.com

M Kidd Properties, Inc.

3501 W Alabama

Suite 105, Houston, TX 77027

www.mkiddproperties.com


Industrial Building For Lease

25410 Clay Road, Katy, TX 77493

ENERGY PARK WEST BUSINESS PARK



FOR LEASE

 energy recovery
SUBLEASE TO
AURELIA TECHNOLOGY

TMEiC

NEW 30K SF
WAREHOUSE

 **CENTURION**
SUBSEA SERVICES

25410 CLAY RD

CLAY RD

KATY HOCKLEY CUT OFF

DRIVE TIME

From	Distance	Time
Grand Pkwy.	3 Miles	6 Minutes
Katy Fwy.	4.5 Miles	10 Minutes
Beltway 8	19 Miles	23 Minutes
US 290	19 Miles	20 Minutes
CBD	33 Miles	40 Minutes

25,000 SF building
10,000 SF Offices on two levels
15,000 SF Warehouse

PROPERTY IS OCCUPIED; TOURS BY APPOINTMENT ONLY

FOR INFORMATION, CONTACT

Mark W. Kidd, Sr.
President
(713) 545-1901
mark@mkiddproperties.com

M Kidd Properties, Inc.
3501 W Alabama
Suite 105, Houston, TX 77027
www.mkiddproperties.com

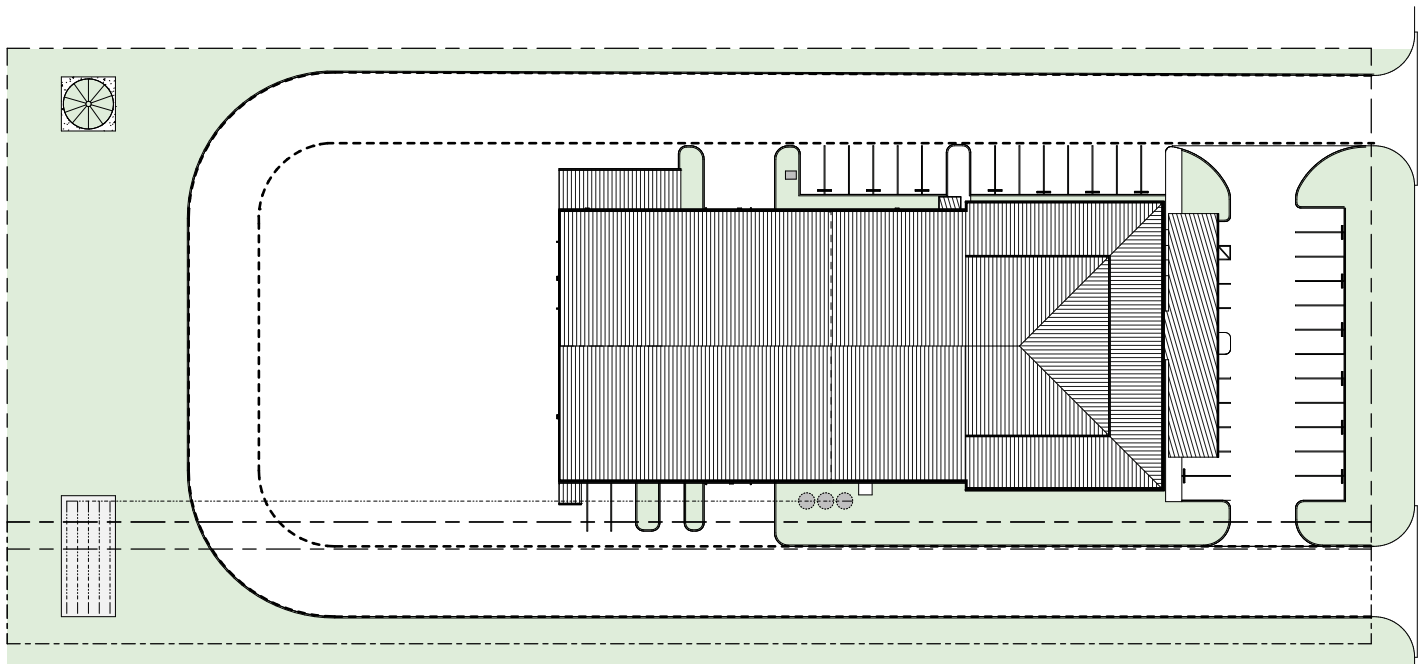
Industrial Building For Lease

25410 Clay Road, Katy, TX 77493

ENERGY PARK WEST BUSINESS PARK



Site Plan



PROPERTY IS OCCUPIED; TOURS BY APPOINTMENT ONLY

FOR INFORMATION, CONTACT

Mark W. Kidd, Sr.

President

(713) 545-1901

mark@mkiddproperties.com

M Kidd Properties, Inc.

3501 W Alabama

Suite 105, Houston, TX 77027

www.mkiddproperties.com

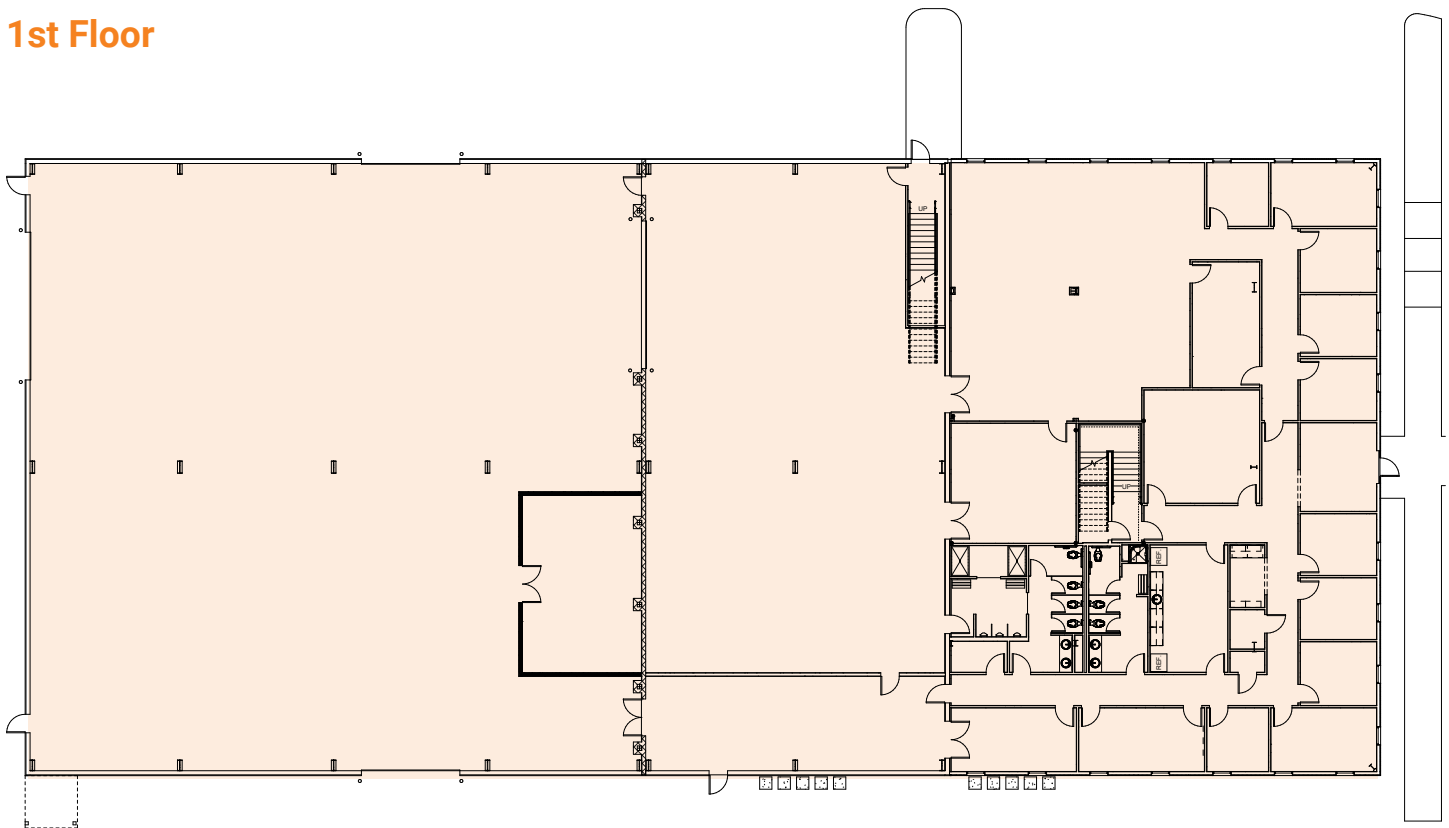
Industrial Building For Lease

25410 Clay Road, Katy, TX 77493

ENERGY PARK WEST BUSINESS PARK



1st Floor



PROPERTY IS OCCUPIED; TOURS BY APPOINTMENT ONLY

FOR INFORMATION, CONTACT

Mark W. Kidd, Sr.

President

(713) 545-1901

mark@mkiddproperties.com

M Kidd Properties, Inc.

3501 W Alabama

Suite 105, Houston, TX 77027

www.mkiddproperties.com

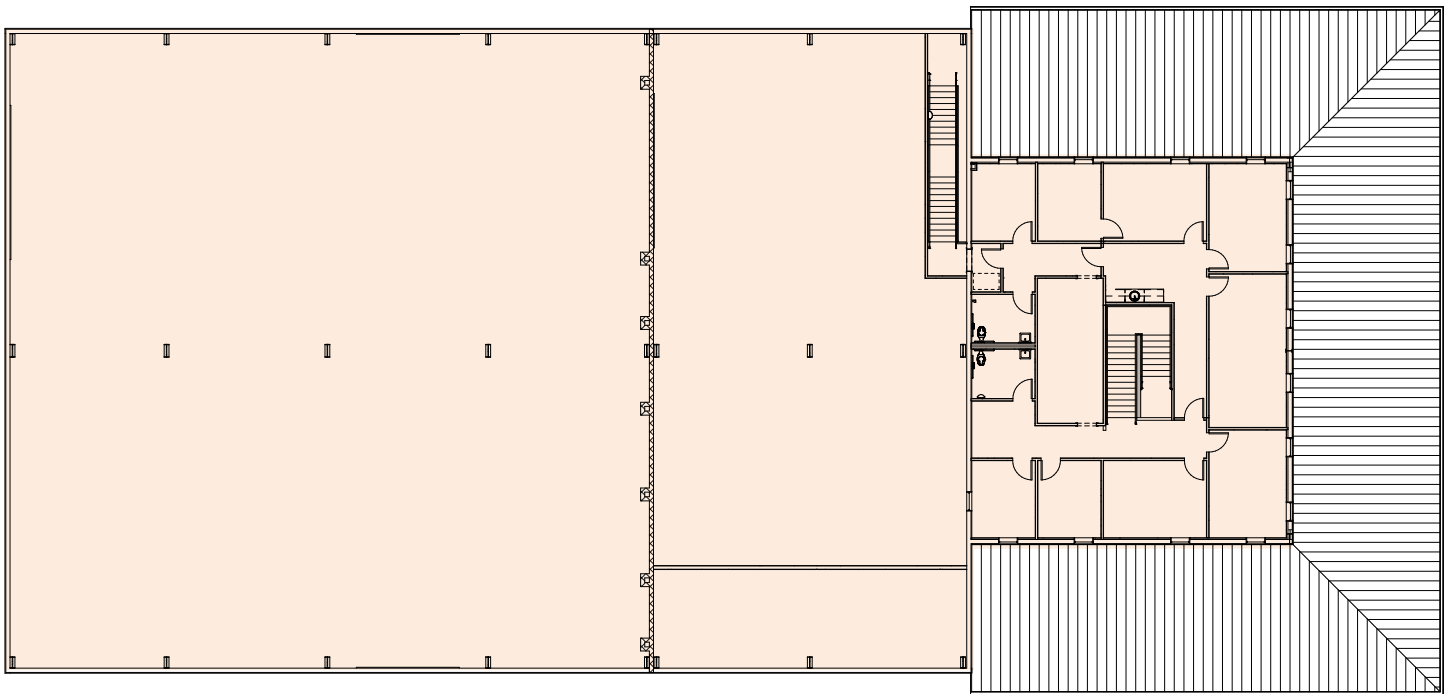
Industrial Building For Lease

25410 Clay Road, Katy, TX 77493

ENERGY PARK WEST BUSINESS PARK



2nd Floor



PROPERTY IS OCCUPIED; TOURS BY APPOINTMENT ONLY

FOR INFORMATION, CONTACT

Mark W. Kidd, Sr.

President

(713) 545-1901

mark@mkiddproperties.com

M Kidd Properties, Inc.

3501 W Alabama

Suite 105, Houston, TX 77027

www.mkiddproperties.com