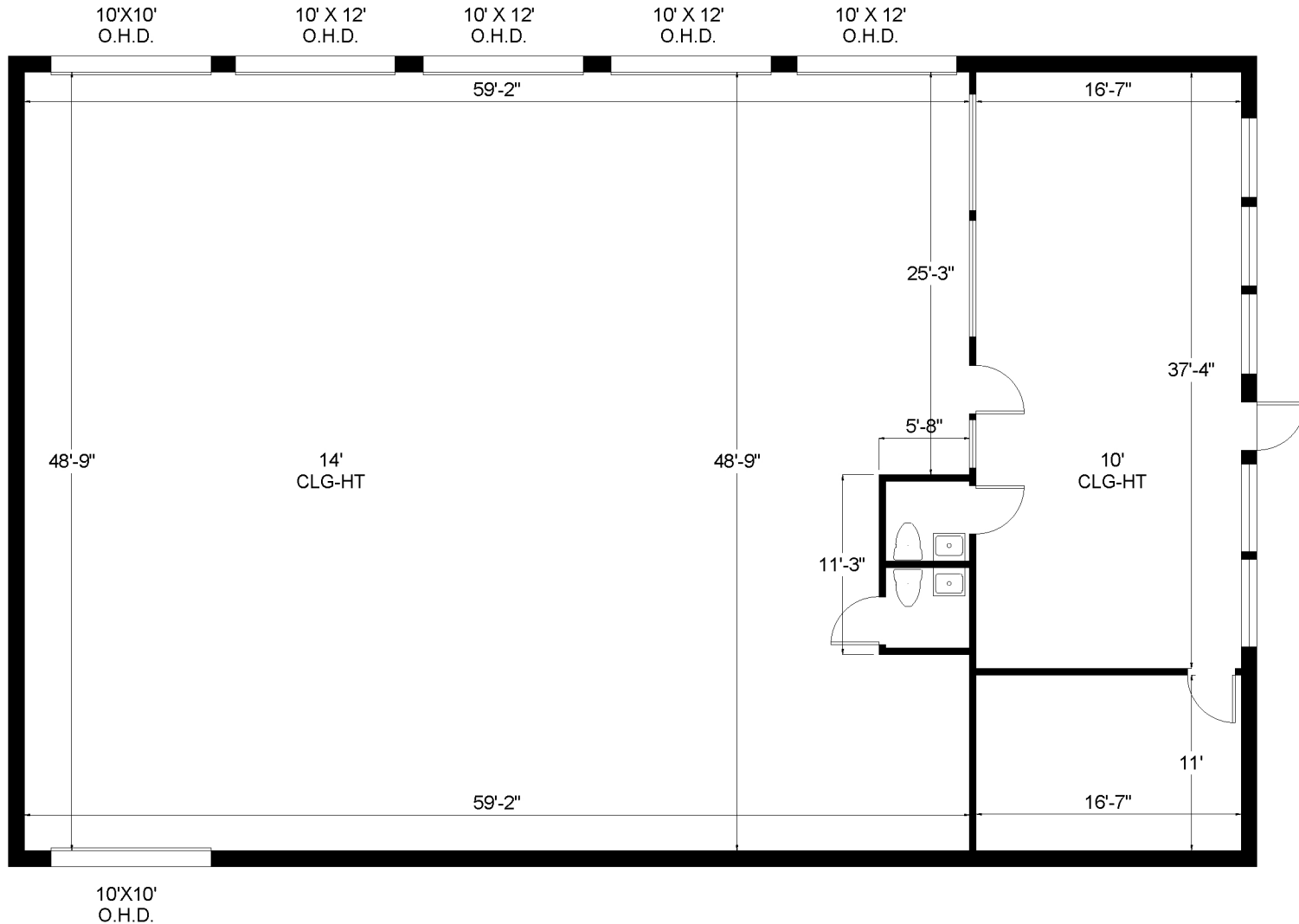


HARBOUR AUTO MALL

6520 W Comercial Blvd | Lauderhill, FL 33319



Office - 892 Sq. Ft.
Warehouse - 3,051 Sq. Ft.



Haley Presser | Property Manager | 954.254.5396 | Haley@levyai.com
Angie Weaver | Broker / Property Manager | 917.645.2339 | Angie@levyai.com
4901 NW 17th Way, Suite 103 | Ft. Lauderdale, FL 33309

3,943 Rentable Sq. Ft.
www.LevyRealtyAdvisors.com