

# Crossroads Shopping Ctr



## 7011 W Central, Wichita, KS

**Location:** SE Corner of Ridge Road and Central. **Space Size:** 2,700 SF.

**Lease Rate:** \$12.00 SF.

**Tenant Pays:** Utilities.

**Taxes:** \$1.51 SF.

**CAM Charge:** \$0.50 SF.

**Parking:** 175 spaces.

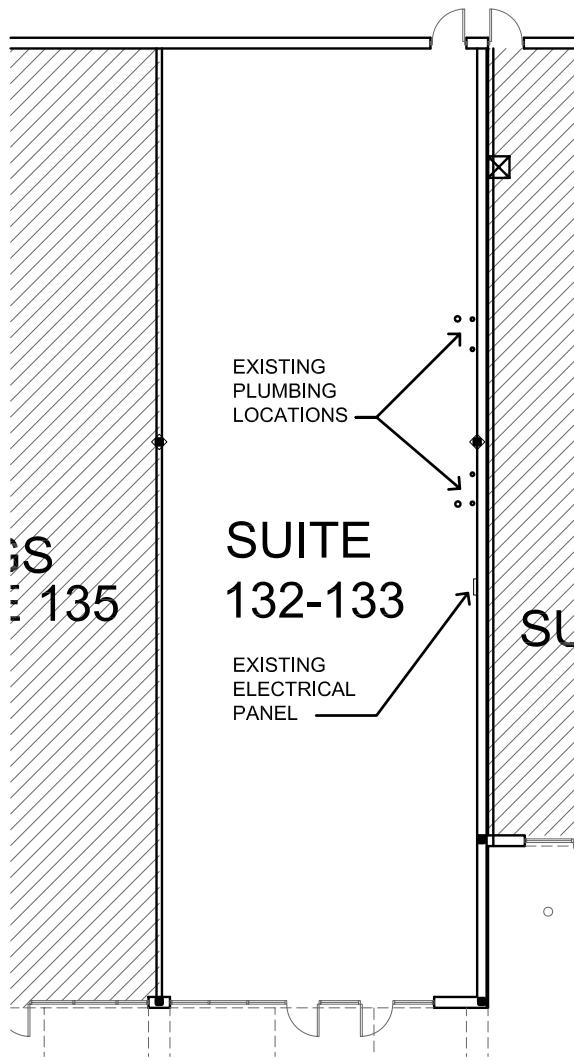
**Traffic Count:** 43,783

**Daytime Population:** 95,398

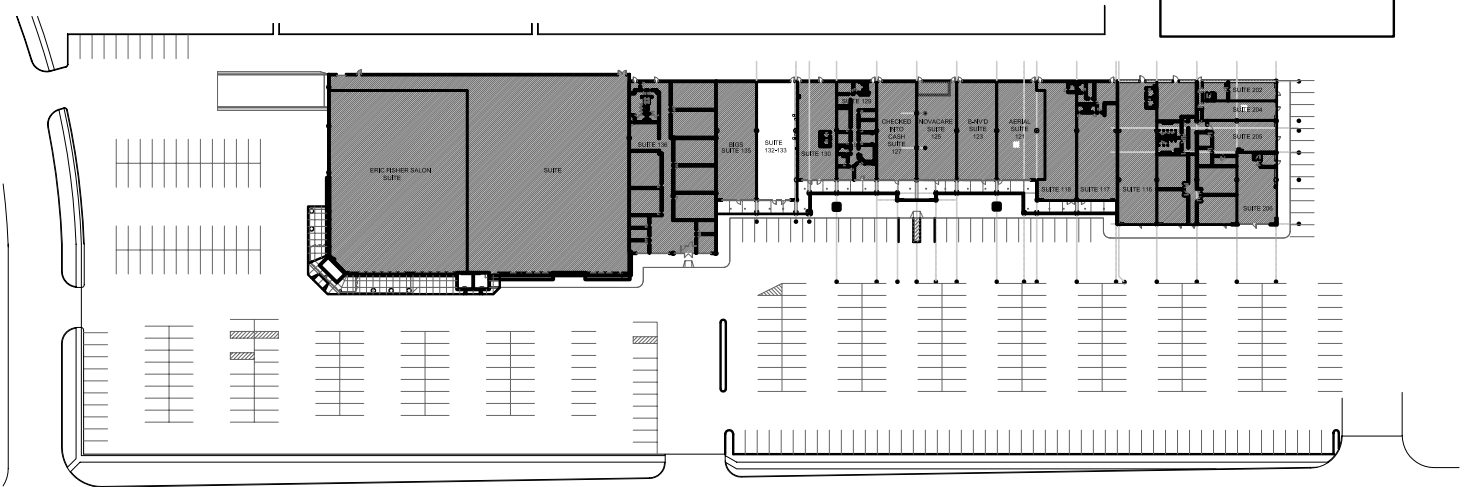
**Tenants:** Gordmans, Eric Fisher, Dopps Chiro., When Pigs Fly, State Beauty Supply, BIGS.



**JON R. CYPHERT**  
Commercial Real Estate  
316.841.0880



 **SUITEPLAN**



 **KEY PLAN**



**SPANGENBERG PHILLIPS TICE**  
**ARCHITECTURE**  
 121 N Mead Ste 201 Wichita KS 67202  
 T 316.267.4002 F 316.267.1509  
 www.sptarchitecture.com

**CROSSROADS SHOPPING CENTER**

SUITE 132-133