

The Colliers logo consists of the word "Colliers" in a white serif font, centered within a blue rounded rectangle. Below the rectangle are three horizontal stripes: a yellow one on top, a red one in the middle, and a blue one on the bottom.

Accelerating success.

An aerial photograph of a single-story brick dental office building with a brown shingled roof and green awnings over the windows. A blue line highlights a section of the building's exterior wall and a set of stairs leading to a back entrance. The building has a logo on the wall that reads "The Power of Your Smile" and a sign for "bbsef" near the back entrance. The surrounding area includes a parking lot, a sidewalk, and some landscaping with rocks and shrubs.

TS
The Power of Your Smile

For Lease

1675 Hill Road
Boise, Idaho

Michelle Torres Ogden
208 514 7121
michelle.ogden@colliers.com

Kyle Uhlenkott
208 489 6176
kyle.uhlenkott@colliers.com

Devin Ogden, MBA, CCIM, SIOR
208 472 1668
devin.ogden@colliers.com

Property Overview

Entire lower level 3,082 SF office space at the corner of Hill Road and 16th

Property Type	Office
Available Suite Size	1,000 SF - 3,053 SF
Zoning	R-3HD
Property Access	On Lock Box

Space Available

Suite	Size	Rate
A & B	1,000 SF - 3,053 SF	\$10.00 PSF

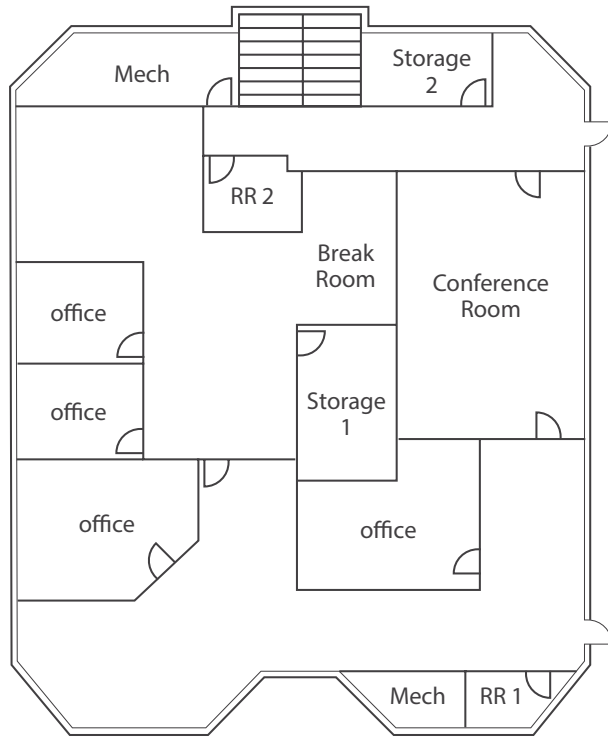
Lease Type	NNN (Estimated at \$3.25/SF Annually)
------------	---------------------------------------



Key Highlights

- Rare North End office opportunity
- Close proximity to Downtown Boise and Bogus Basin
- Can be demised
- Great windows on west side of building for private offices
- Monument signage on Hill Road

Floor Plans



Lower Level
3,226 SF

