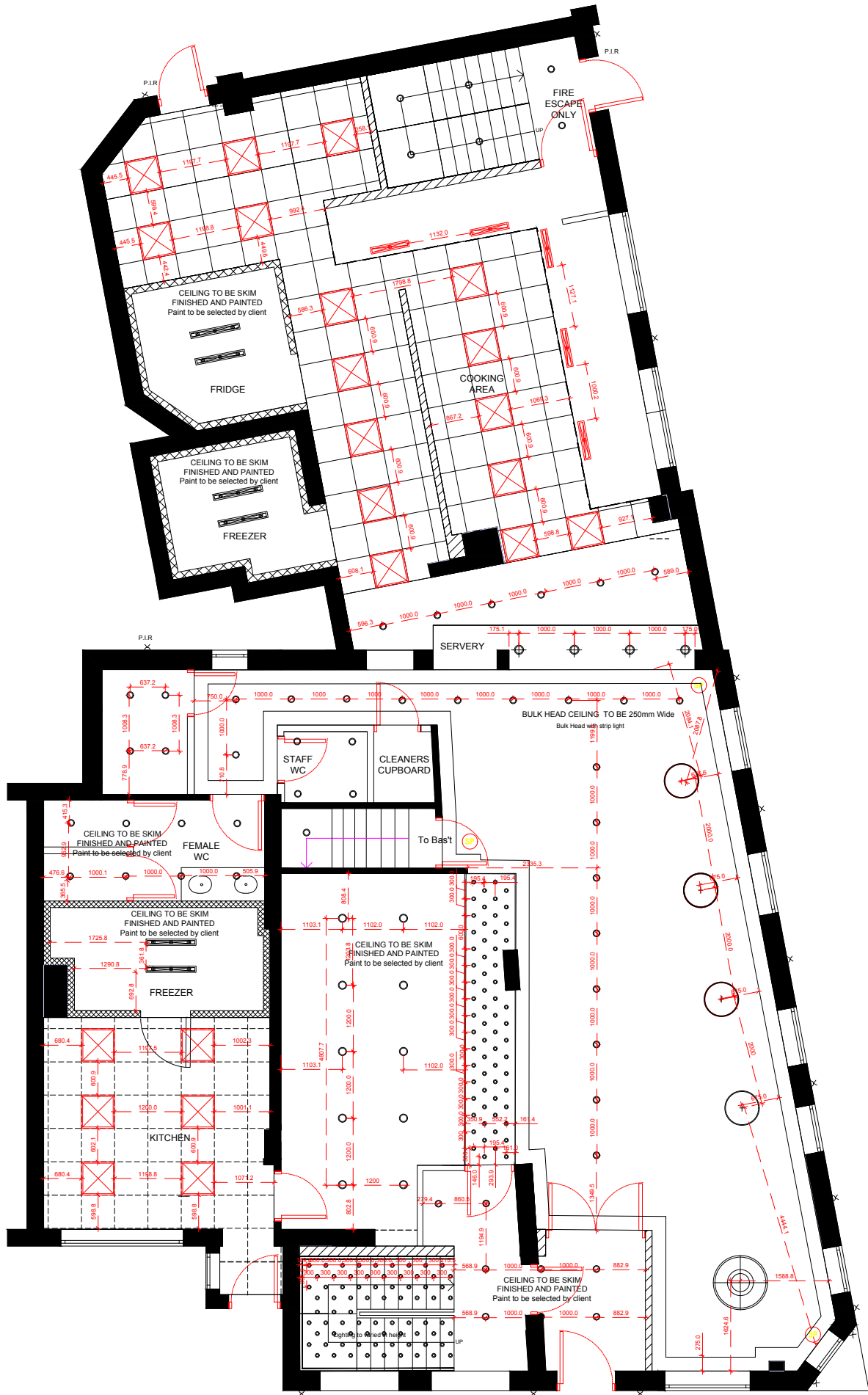
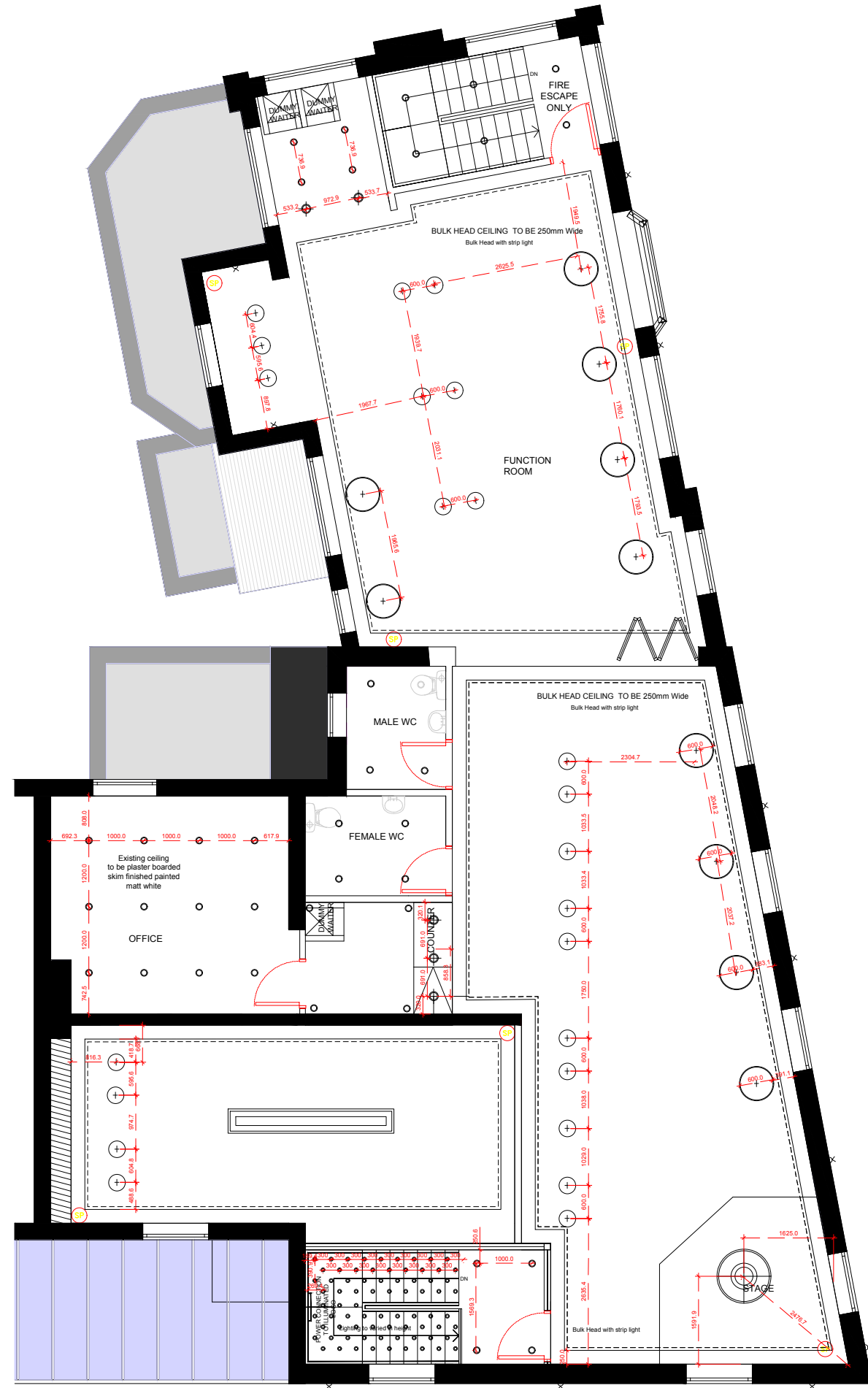




The contractor is responsible for checking dimensions, tolerances and references. Any discrepancy to be verified with the Architect before proceeding with the works. Where an item is covered by drawings to different scales the larger scale drawing is to be worked to. Do not scale drawing. Figured dimensions to be worked to in all cases.



PROPOSED GROUND FLOOR LIGHTING LAYOUT



PROPOSED FIRST FLOOR LIGHTING LAYOUT

- Suspended LED Linear light from: www.seetechnologies.com 'STL137' 600mm - White Lighting strip size, colour and amount to be finalized with client on site
- 100mm LED Spotlight
- Turkish Lantern Hollowed-out Pendant Lighting Single-Bulb Metal Hanging Lamp in Bronze
- Drop pendant lights to clients specification.
- CANOPY BULKHEAD LIGHTS
- CONCEALED TUBE LIGHT FOR FRIDGE / FREEZER LIGHTS
- SPEAKERS - BLACK
- Lights to clients specification.
- Lights to clients specification.
- Crystal Lamp pendant lights to clients specification. Lighting to varied in height
- Wall Lighting
- 600x600 LED flat panel ceiling lights
- Bulk Head with strip light to clients specification.

Lights /A/C for indicative purpose only, contractor to confirm layout with client and franchiser

REV A - 01/12/2022  
As requested by project manager

<b>Drawing no. 8</b>		
date	rev.	revision/author/checker
<b>PURPOSE OF ISSUE</b> CONSTRUCTION		
<b>PROJECT</b> 936 - 938 Stockport Road, Levenshulme, Manchester, M19 3NN		
<b>DRAWING</b> PROPOSED PLANS: LIGHTING LAYOUT		
<b>JOB NO.</b> 2022-165-008		REV <b>A</b>
<b>DRAWN BY.</b> AS	checked	
<b>SCALE</b> 1:100@A3	<b>DATE:</b> 08.12.2022	