

THE BROOKS TOWN CENTER

10020 Coconut Road | Estero, FL

Office For Lease



LQ Commercial
REAL ESTATE SERVICES

LQCRE.COM

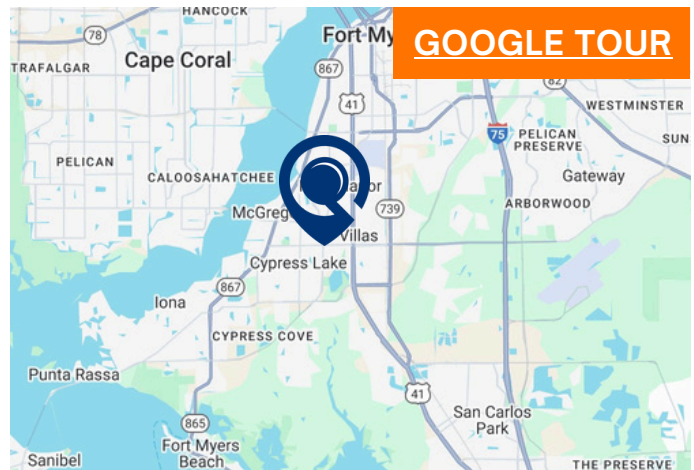


OFFICE SPACE FOR LEASE IN ESTERO

SUITE 140: 1,455 SF

- Upscale office space.
- 3 offices and conference room.
- Class A finishes.
- Co-tenants include: FineMark National Bank & Trust, Burn Boot Camp, LabCorp, Pinch-A-Penny, and more.
- Coconut Road: 12,500 AADT
- Three Oaks Pkwy: 30,000 AADT

GOOGLE TOUR



[LQCRE.COM/BROOKS-TOWN-CENTER](https://www.lqcre.com/brooks-town-center)



5-MILE POPULATION

91,994



5-MILE EMPLOYEES

36,993



5-MILE AVG. INCOME

\$148,293



1614 Colonial Blvd. #101
Fort Myers, FL 33907

[LQCRE.COM](https://www.lqcre.com)

Jessica McEvoy
Senior Associate

O: 239.275.4922 x 226

D: 239.333.4374

jmcevoy@lqcre.com

Tom Strauss
Principal & Managing Director

O: 239.275.4922 x 202

D: 239.333.4370

tstrauss@lqcre.com

THE BROOKS TOWN CENTER

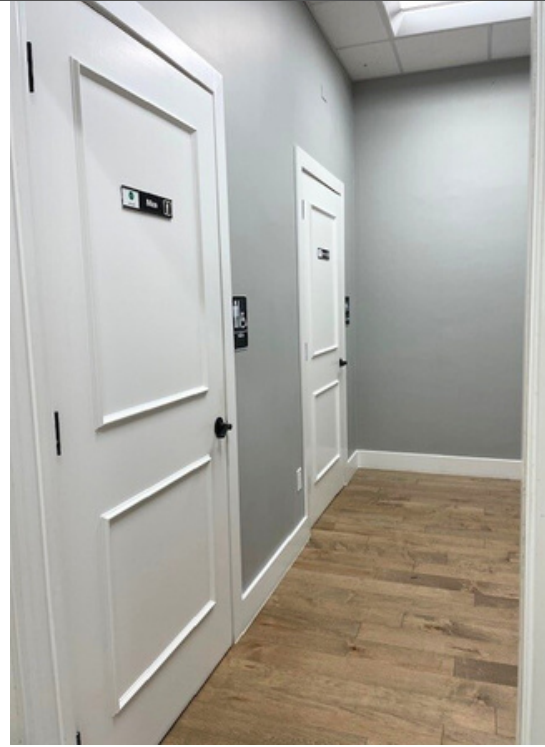
10020 Coconut Road | Estero, FL

Office For Lease



LQ Commercial
REAL ESTATE SERVICES

LQCRE.COM



1614 Colonial Blvd. #101
Fort Myers, FL 33907

LQCRE.COM

Jessica McEvoy
Senior Associate

O: 239.275.4922 x 226

D: 239.333.4374

jmcevoy@lqcre.com

Tom Strauss

Principal & Managing Director

O: 239.275.4922 x 202

D: 239.333.4370

tstrauss@lqcre.com

THE BROOKS TOWN CENTER

10020 Coconut Road | Estero, FL

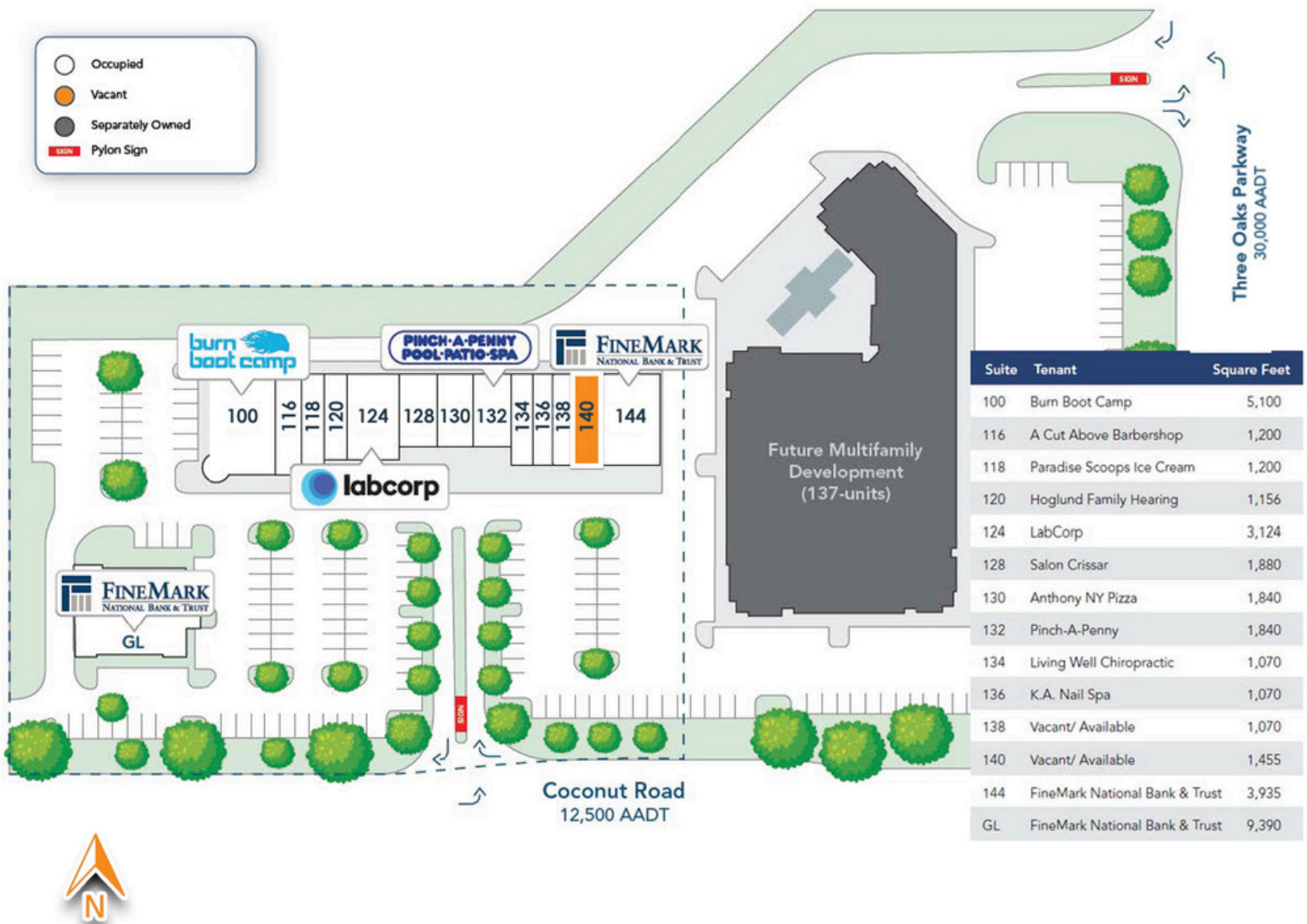
Office For Lease



LQ Commercial
REAL ESTATE SERVICES

LQCRE.COM

SITE PLAN



LQ Commercial
REAL ESTATE SERVICES
1614 Colonial Blvd. #101
Fort Myers, FL 33907
LQCRE.COM

Jessica McEvoy
Senior Associate
O: 239.275.4922 x 226
D: 239.333.4374
jmcevoy@lqcre.com

Tom Strauss
Principal & Managing Director
O: 239.275.4922 x 202
D: 239.333.4370
tstrauss@lqcre.com

THE BROOKS TOWN CENTER

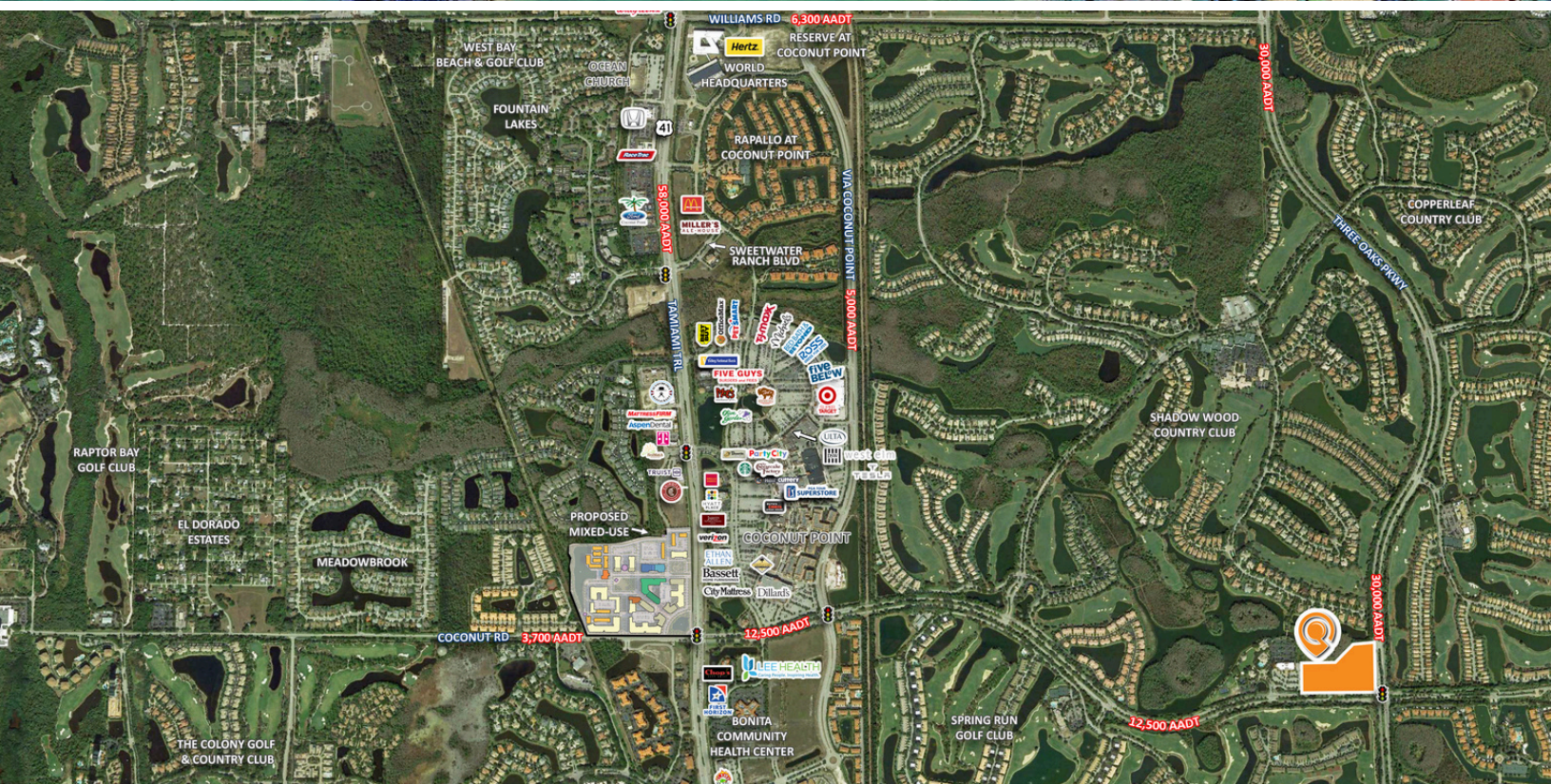
10020 Coconut Road | Estero, FL

Office For Lease



LQ Commercial
REAL ESTATE SERVICES

LQCRE.COM



LQ Commercial
REAL ESTATE SERVICES
1614 Colonial Blvd. #101
Fort Myers, FL 33907

LQCRE.COM

Jessica McEvoy
Senior Associate

O: 239.275.4922 x 226

D: 239.333.4374

jmcevoy@lqcre.com

Tom Strauss
Principal & Managing Director

O: 239.275.4922 x 202

D: 239.333.4370

tstrauss@lqcre.com

Information obtained from owner(s) or sources deemed reliable. We have no reason to doubt its accuracy, but cannot guarantee it. Property is subject to change or withdraw without notice.