

28315 Woodlawn Drive

Punta Gorda, FL 33982

Q3' 2026 DELIVERY | PHASE I - 10,000 SF ON 2.5 ACRES - Expandable up to 5 Acres!



Property Highlights

- + Phase I - 10,000 SF on 2.5 Acres
- + Q3 2026 Delivery
- + Zoning Flexibility: ECAP Zoning
- + Prime Location - Easy access to major highways and the Punta Gorda Airport

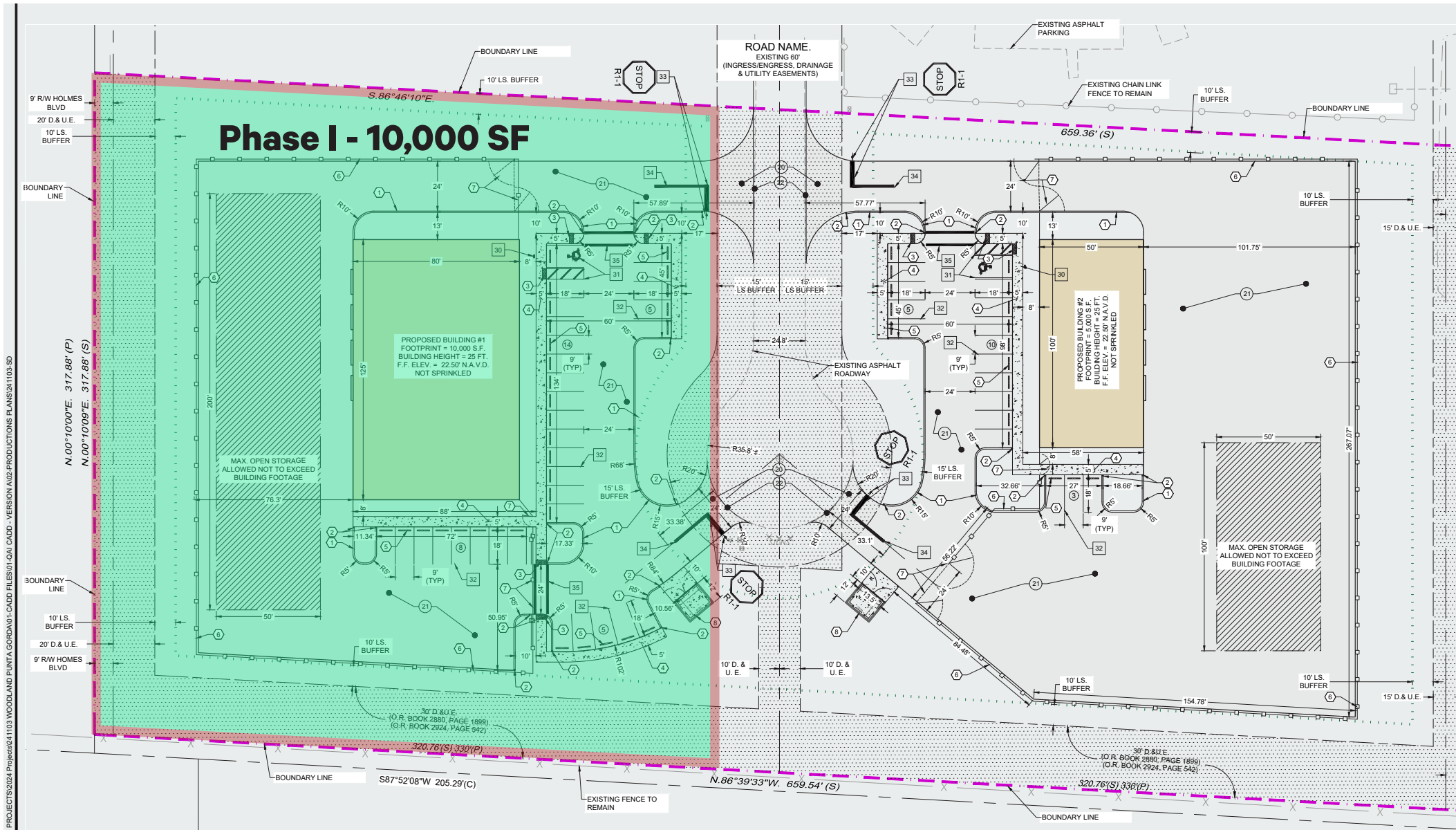
\$20,000
Monthly NNN Rate

\$3,400
Monthly Operating Expenses

10,000 SF
Warehouse Space

1,036 SF
Office Space

2.5 Acres
Expandable up to 5 Acres!



Property Information

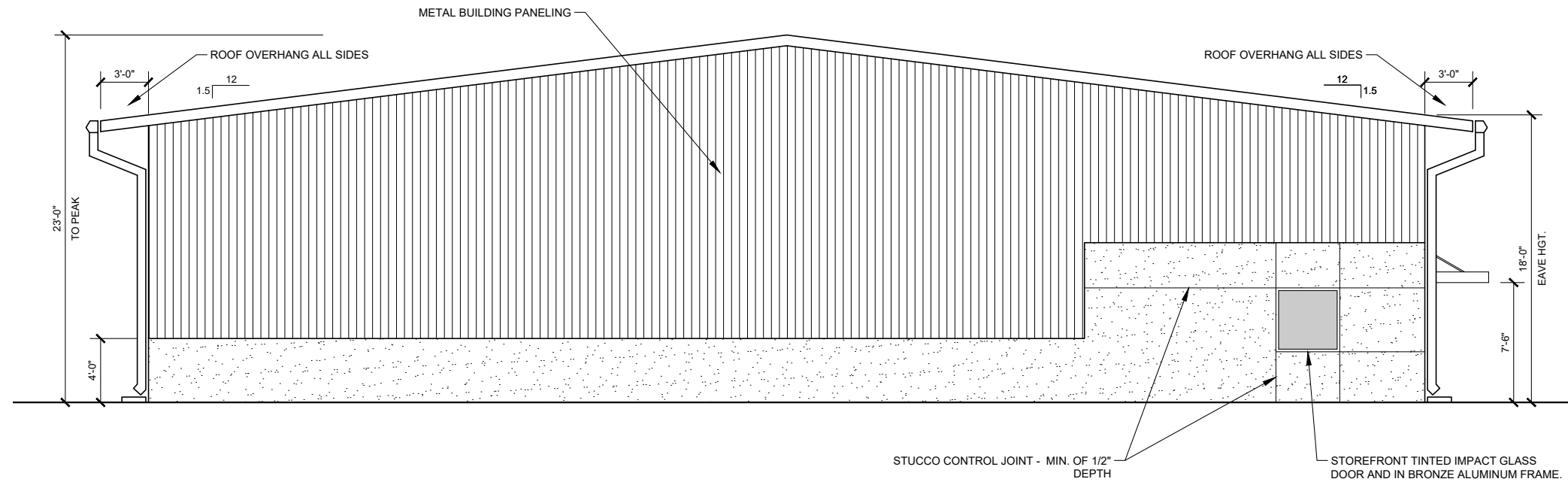
Building Dimensions	125'x80'
Clear Span	Yes
Clear Height	18' & Up to 24' in Center
Overhead Doors	4 - 14'x'14' Grade-Level Doors
Power	3 Phase 600 Amps
Secure Fenced Property	Yes
Parking Spots	32



Floor Plan

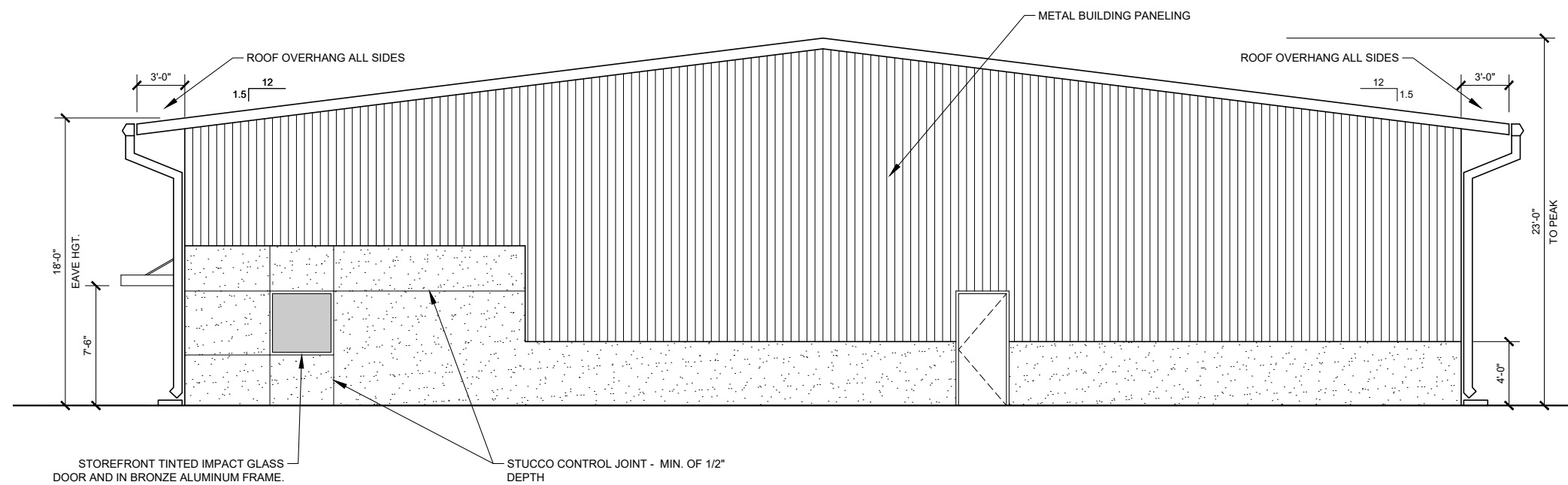


Building Elevation



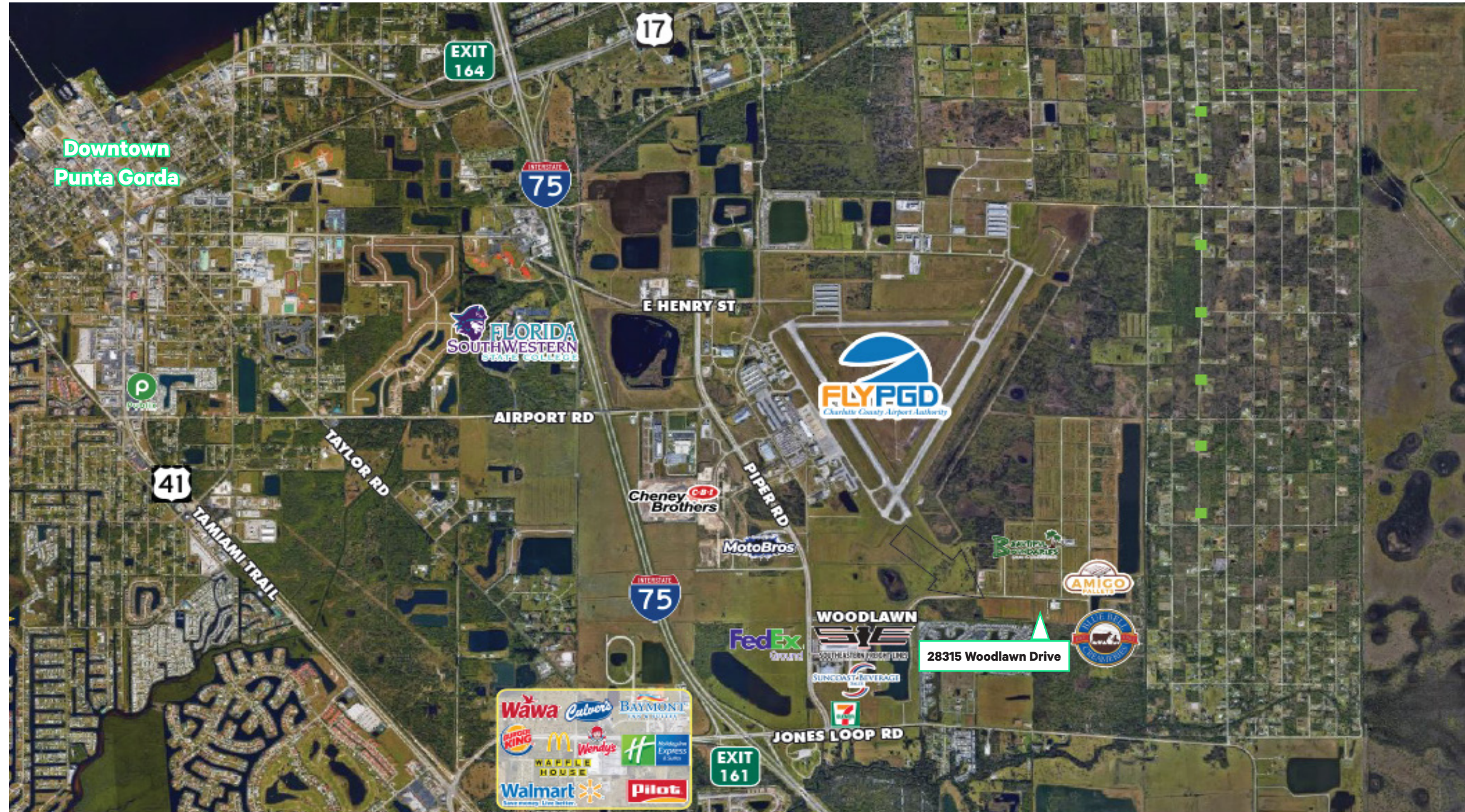
BUILDING 1 - LEFT (SOUTH) ELEVATION

SCALE: 3/16" = 1'-0"



BUILDING 1 - RIGHT (NORTH) ELEVATION

SCALE: 3/16" = 1'-0"



CONTACT:

DEREK BORNHORST, SIOR, CCIM

Senior Vice President

+1 239 898 7987

derek.bornhorst@cbre.com