

SHORELINE WAREHOUSE



16715 AURORA AVE N | SHORELINE, WA 98133



PRIME SHORELINE INDUSTRIAL WAREHOUSE

AVAILABLE

SUITE 103

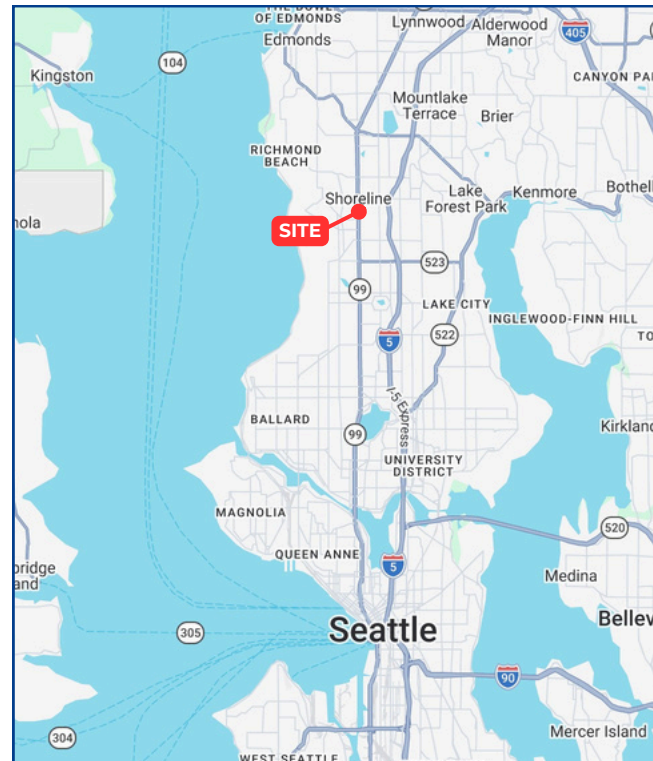
2,445 SF

PROPERTY INFORMATION

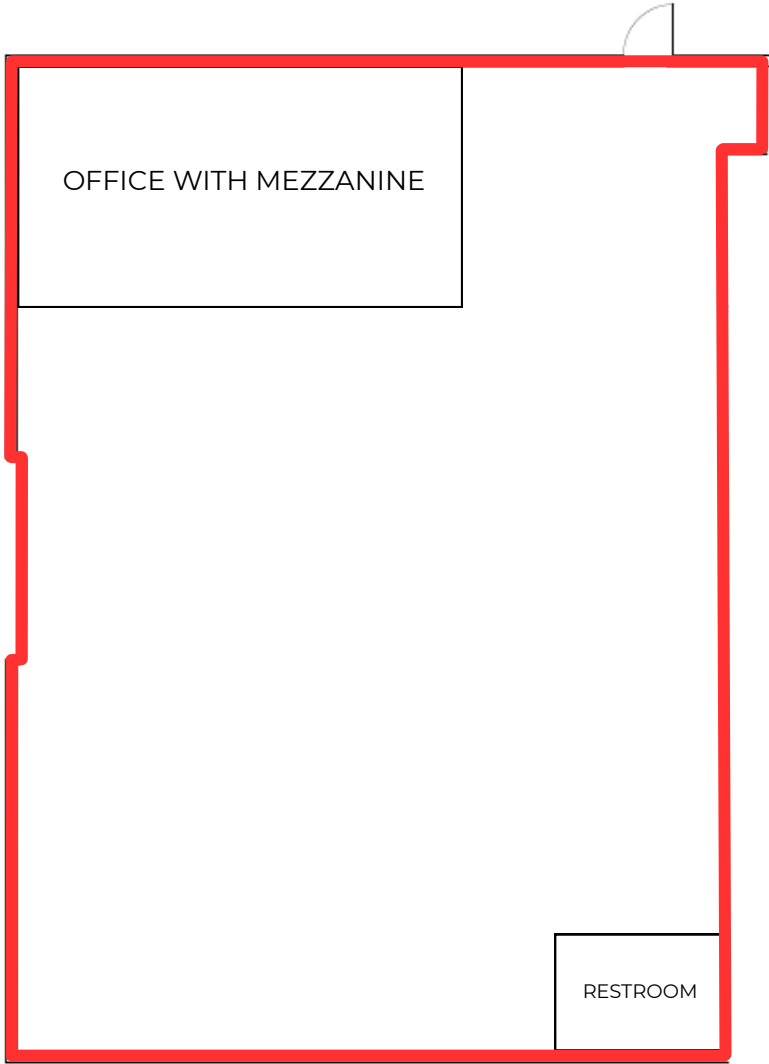
- Call Broker for Rates
- Loading -
 - Dock High: 1 (Oversized)
 - Grade Level: 1 (Oversized)
- Clear Height - 20'
- Free Mezzanine Space
- 1 Restroom
- Double Office/Conference Room
- Heavy Power

PROPERTY HIGHLIGHTS

- Easy Aurora access keeps your shop space minutes from Highway 99, I-5, and jobs across the various markets.

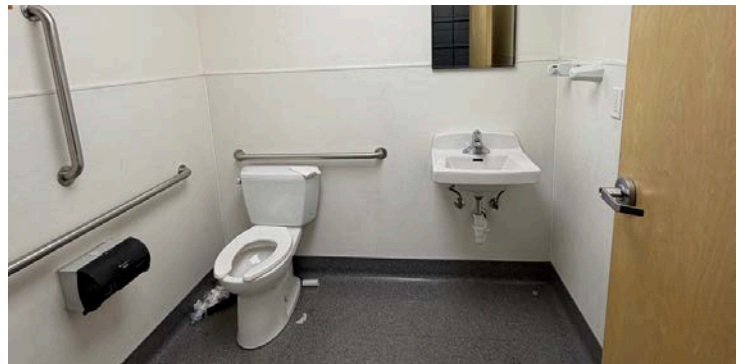


SITE PLAN FIRST FLOOR

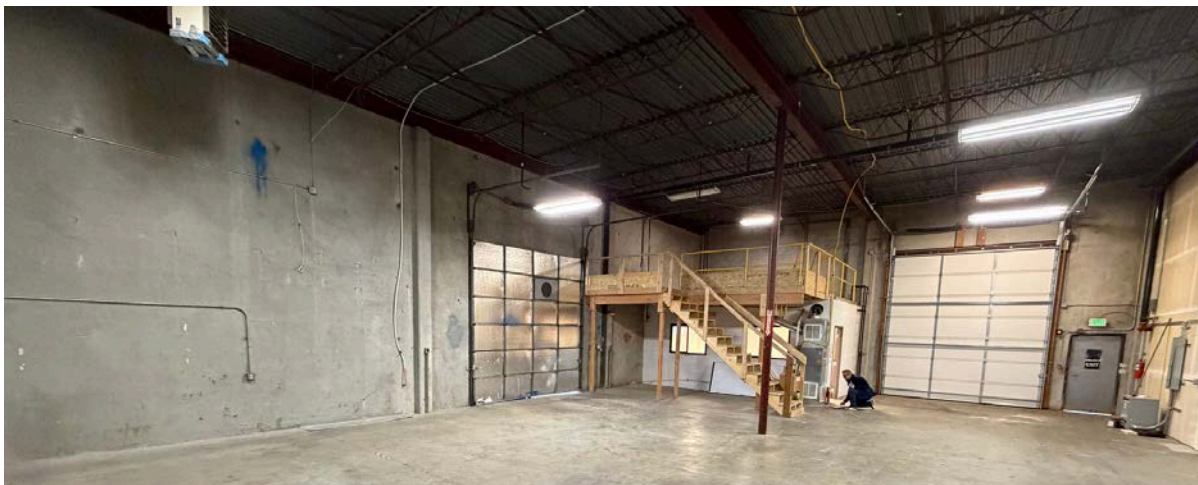


SUITE 103

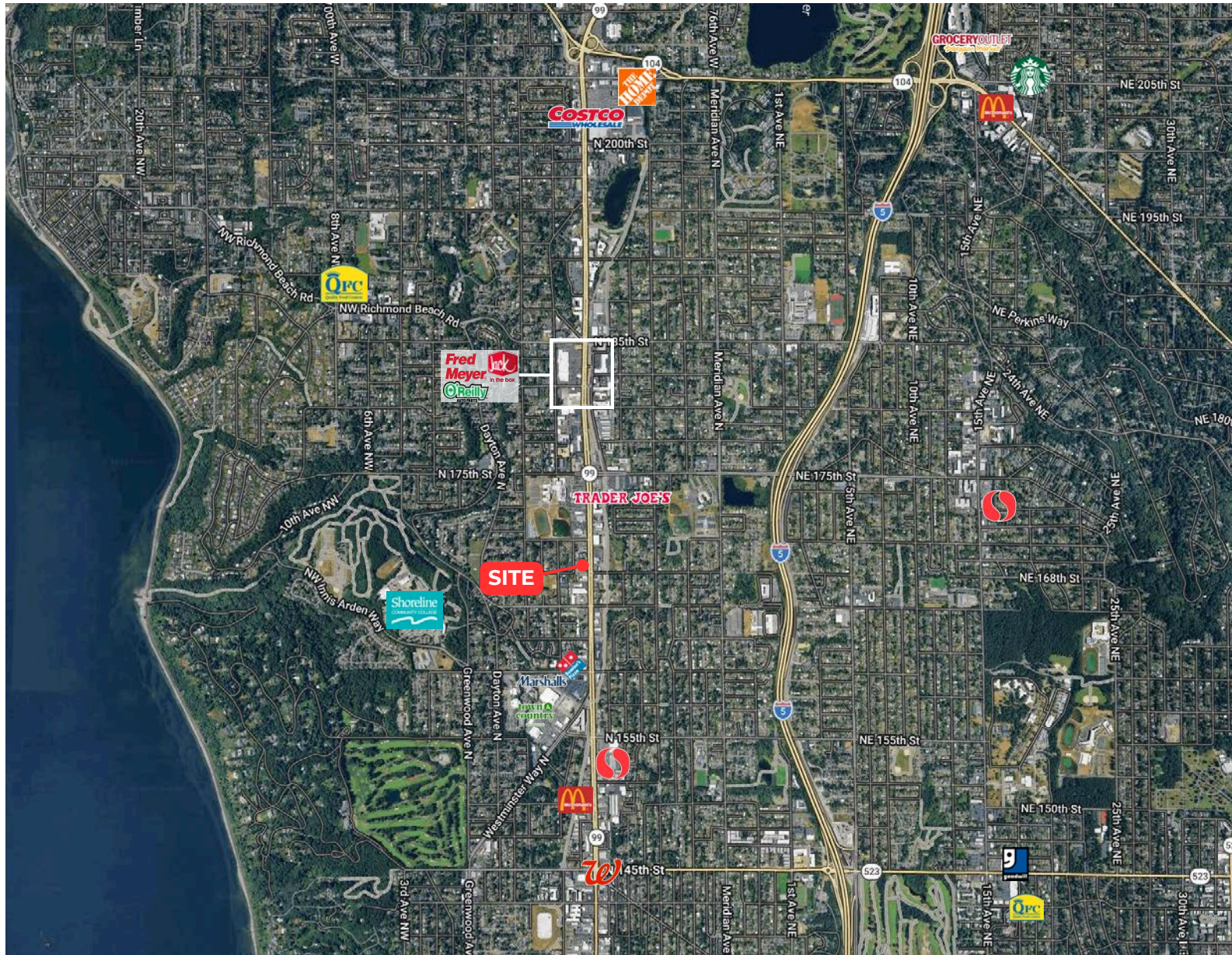
SIZE	2,445 SF
LOADING	Dock High - 1 (Oversized) Grade Level - 1 (Oversized)
AVAILABLE	Now
CLEAR HEIGHT	20'



**DRAWING NOT TO SCALE*



AERIAL



CONTACT



MASON COGLE
SENIOR VICE PRESIDENT
MASON@PAADVISORS.COM
425.681.8008



The information contained herein has been provided by the Pacific Asset Advisors, Inc. and is believed to be correct to the best of Pacific Asset Advisors, Inc.'s actual knowledge as of the date of publication; however, no representations or warranties, express or implied, are made as to its accuracy or completeness. Prospective tenants are advised not to rely solely on this information and to conduct their own independent investigation.