

# 300 BEALE STREET

FOR LEASE | CREATIVE SPACE W/ +/- 1,200 SF OUTDOOR PATIO

**TCP**  
**TOUCHSTONE**  
COMMERCIAL PARTNERS



[WWW.TCPRE.COM](http://WWW.TCPRE.COM)

**ZACH HAUPERT** zhaupert@tcpre.com  
C 415.812.1219

**MICHAEL SANBERG** msanberg@tcpre.com  
C 415.697.6088

**ETHAN MANN** ethan@tcpre.com  
C 415.990.9127

# 300 BEALE STREET

## PROPERTY SUMMARY

### ADDRESS

300 Beale Street, San Francisco, CA 94105

### AVAILABLE SPACE

+/- 3,717 Square Feet

### RENTAL RATE

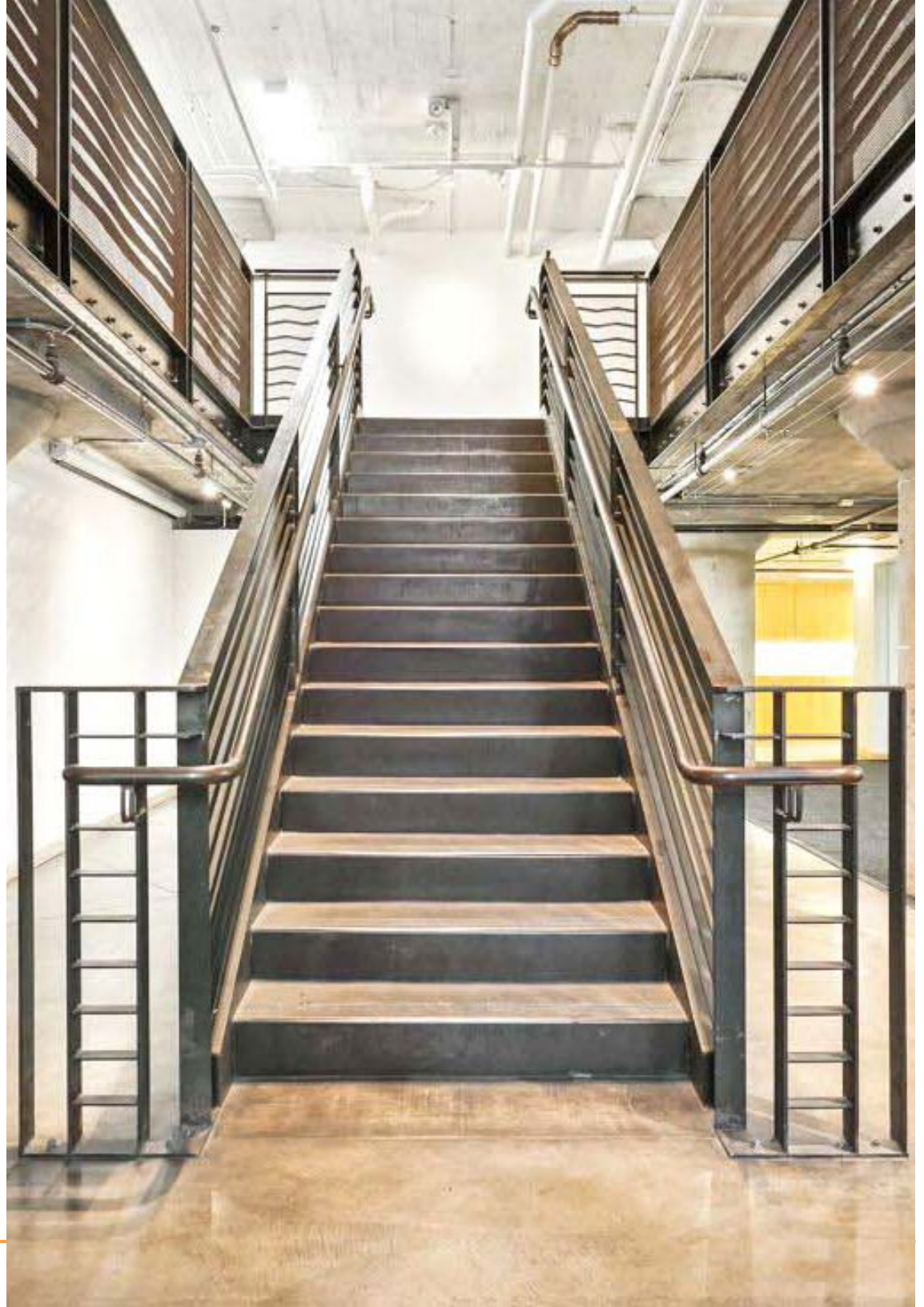
\$55 / Square Foot / Year

### AVAILABLE

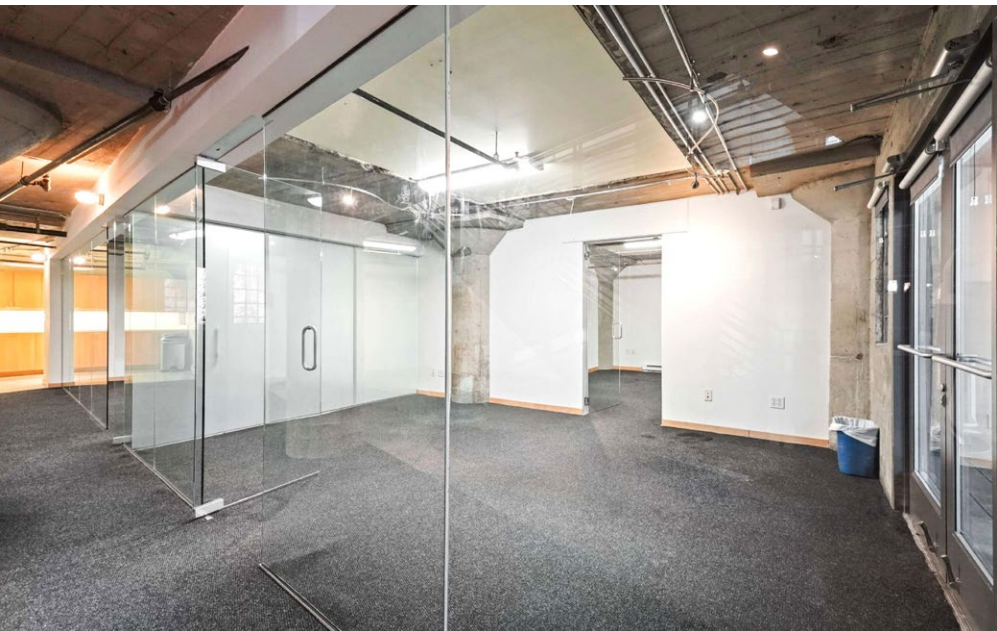
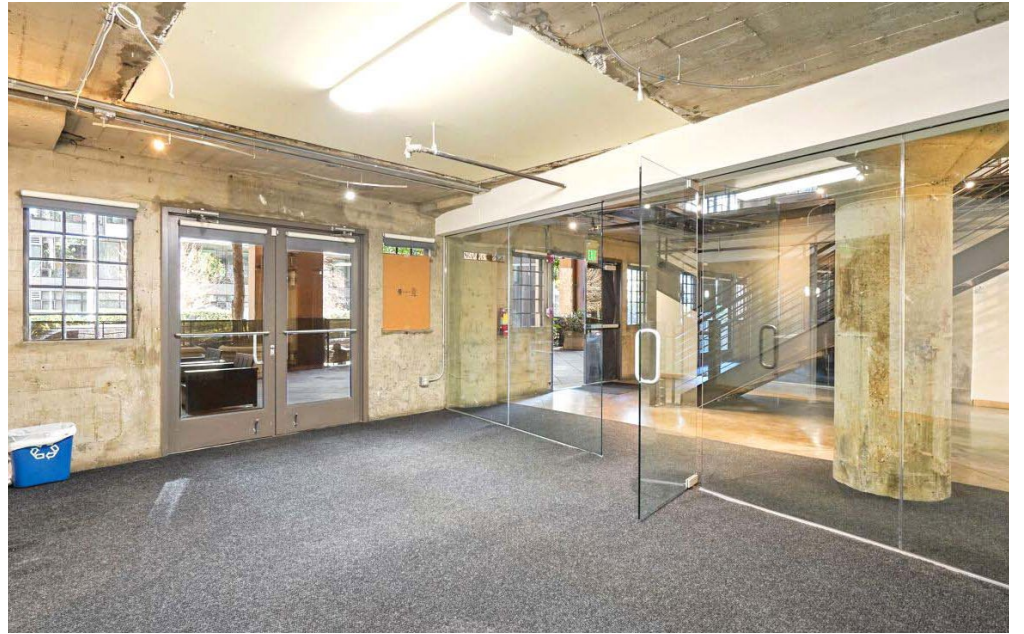
Immediately

## BUILDING ATTRIBUTES

- + +/- 1,200 Square Foot Private Outdoor Patio Space w/ Heat Lamps and Furniture
- + Exposed Concrete Ceilings and Floors
- + Two (2) Large Conference Rooms
- + One (1) Meeting Room
- + Space For Up To Thirty (30) Workstations
- + Two (2) Private Bathrooms
- + Full Kitchen



# 300 BEALE STREET



# 300 BEALE STREET

## LOCATION OVERVIEW

Desirable Rincon Hill location, walkable to nearby amenities, public transportation and to surrounding neighborhoods.



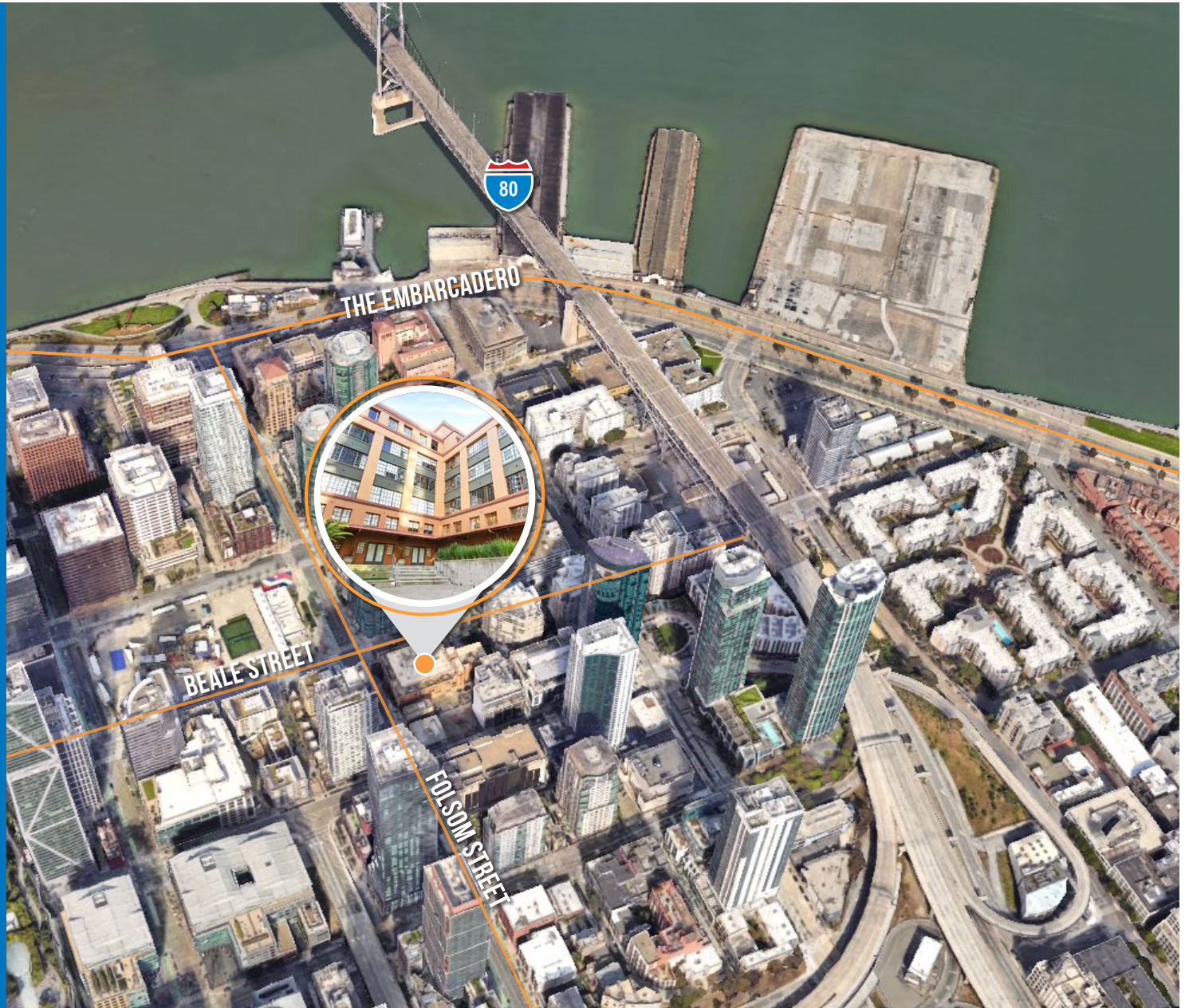
**08 MIN** to Rincon Park  
**10 MIN** to Embarcadero Bart  
**10 MIN** to Market St



**04 MIN** to Financial District  
**07 MIN** to SOMA  
**12 MIN** to Mission District



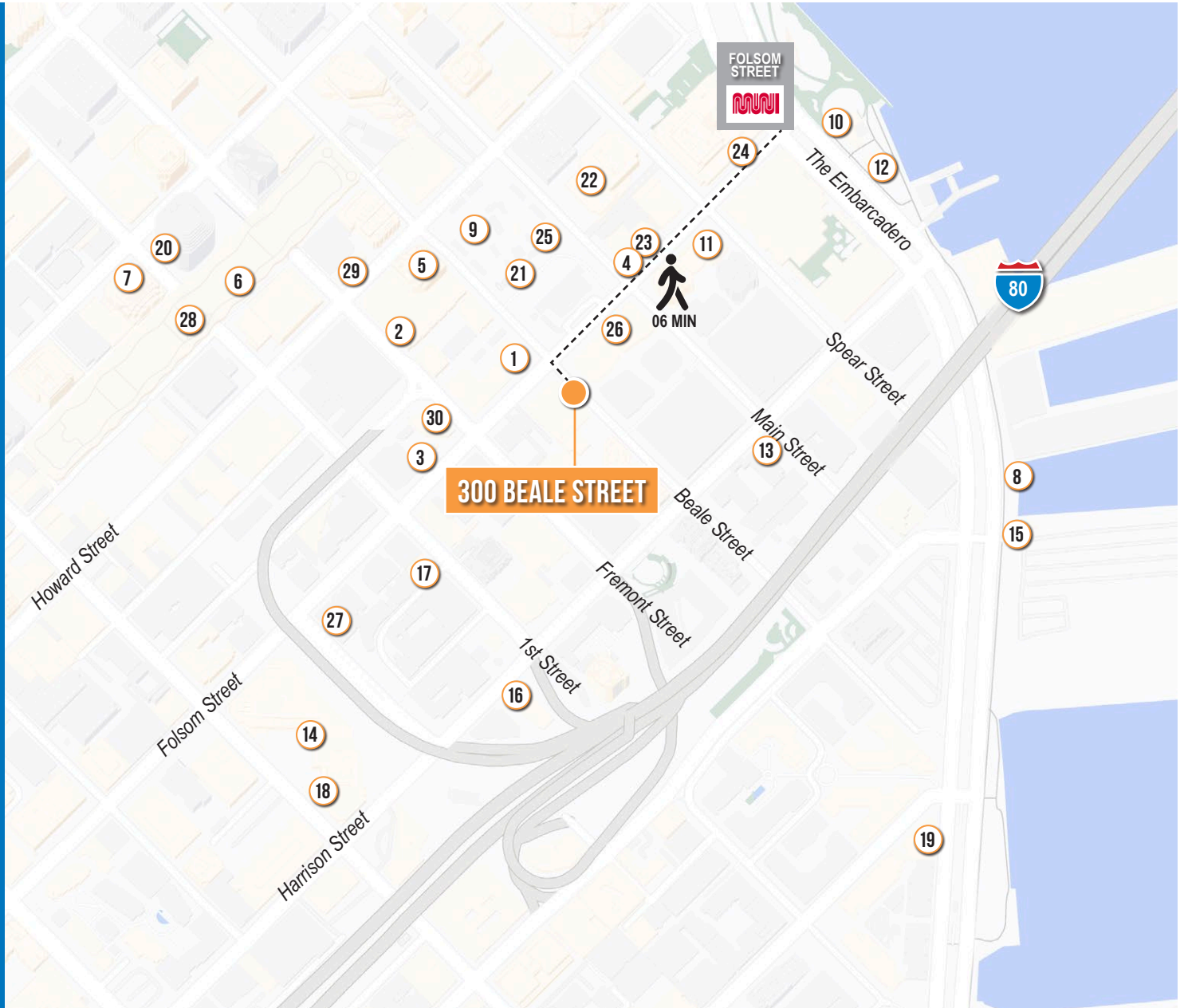
**02 MIN** to 80 On-Ramp  
**09 MIN** to 280 On-Ramp  
**10 MIN** to 101 On-Ramp



# 300 BEALE STREET

## NEARBY AMENITIES

- 1.....Philz Coffee
- 2.....CorePower Yoga
- 3.....AKIKOS Sushi
- 4.....Sweetgreen
- 5.....Joe & The Juice
- 6.....Barebottle Beer Garden
- 7.....Starbucks
- 8.....Hi Dive Bar
- 9.....Pita Gyros
- 10.....EPIC Steak
- 11.....Prospect
- 12.....Waterbar
- 13.....Gabby Market & Deli
- 14.....Rouser & Rice
- 15.....Red's Java House
- 16.....Terra Gallery & Event Venue
- 17.....Cocoon Day Spa
- 18.....Social 303
- 19.....Delancey Street
- 20.....Salesforce Tower
- 21.....The Crossing
- 22.....Lightbox Cafe
- 23.....StretchLab
- 24.....Athleta
- 25.....The Cut Outdoor Cinema
- 26.....Woodlands Market
- 27.....DragonEats
- 28.....FITNESS SF
- 29.....Town Hall
- 30.....TruFusion



# 300 BEALE STREET



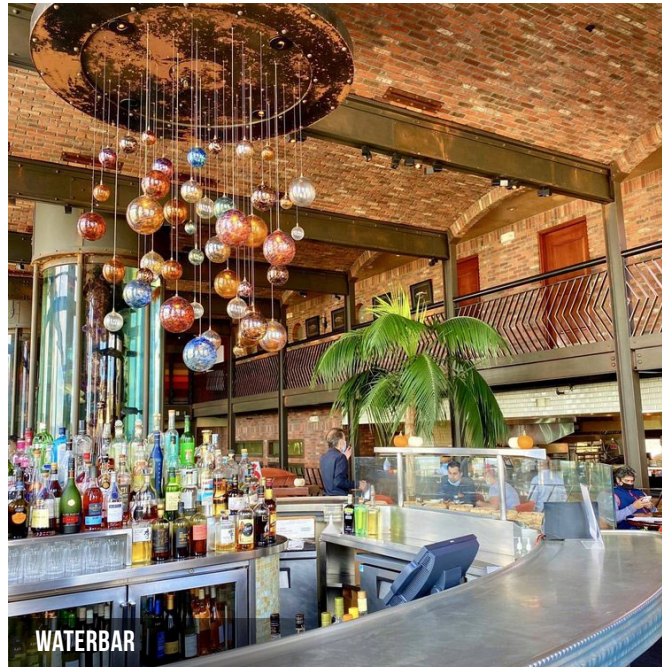
BARE BOTTLE BEER GARDEN



EPIC STEAK



SWEETGREEN



WATERBAR



JOE & THE JUICE

**300** BEALE  
STREET



Corp. Lic. 01112906  
www.tcpre.com

**ZACH HAUPERT**

C 415.812.1219  
zhaupert@tcpre.com DRE # 01822907

**MICHAEL SANBERG**

C 415.697.6088  
msanberg@tcpre.com DRE # 01930041

**ETHAN MANN**

C 415.990.9127  
ethan@tcpre.com DRE # 02223262

This document has been prepared by Touchstone Commercial Partners for advertising and general information only. Touchstone Commercial Partners makes no guarantees, representations or warranties of any kind, expressed or implied, regarding the information including, but not limited to, warranties of content, accuracy and reliability. Any interested party should undertake their own inquiries as to the accuracy of the information. Touchstone Commercial Partners excludes unequivocally all inferred or implied terms, conditions and warranties arising out of this document and excludes all liability for loss and damages arising there from. This publication is the copyrighted property of Touchstone Commercial Partners and/or its licensor(s). ©2026. All rights reserved.