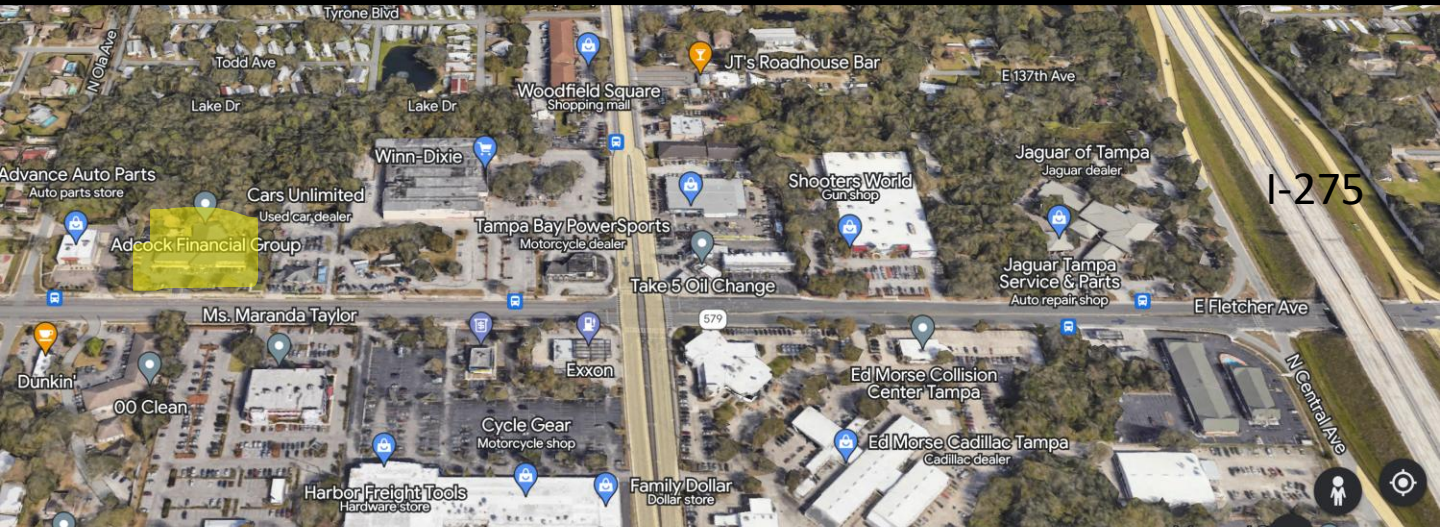


OFFICE SPACE FOR LEASE

315 W. Fletcher Avenue

6,274 SF

TAMPA, FLORIDA



This 6,274 SF space is ideal for most professional office uses. The unit is ready for occupancy. Suite contains an attractive combination of private offices, bull pen area, break room, entry foyer area, business office, server room, and a conference room. Space offers and abundance of natural light as the building has windows on 3 of the 4 sides of the premises.

Square FeetL	6,274	Zoning:	PD
Building Size:	16,434	Year Built:	1999
# Tenants:	3	Renovated:	2022
Parking:	4.75/1000	Construction:	Masonry

Raymond A. Ploucher, CCIM

813-637-8888 Office 813-774-1788 Mobile

rayploucher@reactampa.com

REAL ESTATE ADVISORY CORP. – TAMPA

1300 N. Westshore Blvd., Suite 250, Tampa, FL 33607

NOTE: All efforts have been made to provide accurate information, nevertheless broker is not responsible for errors omissions, mis-statements of facts, and all potential prospective buyers should perform their own due diligence.

