

# Water View Office Sublease

## 705 2<sup>nd</sup> Ave, Seattle



**WEST EDGE**  
CORPORATE REAL ESTATE, LLC



### Location Details

The historic Hoge Building is in the heart of downtown Seattle. Located on 2<sup>nd</sup> Ave and Cherry it boasts great access to I-5, HWY 99, and the waterfront. It's steps from major bus routes and Link Light Rail.

The Hoge Building has undergone extensive upgrades including HVAC, operable windows, on-site building engineers and a building conference room.

### Available Space Details

**Size:** 2,975 SF.

**Rent:** Negotiable

- 9<sup>th</sup> floor with western/water views. End cap unit with three sides of windows providing great natural light.
- Private window-lined offices, conference room(s), formal reception, galley kitchen, and window-lined open workspace.
- Furniture can be made available.
- Sublease term through 4/30/2027.
- Master-tenant is open to shorter lease term or shared space scenario.

Nate White  
nate@westedgecre.com  
206-240-1060

Disclaimer: Information deemed reliable but not guaranteed. Lessee to verify all information



**WEST EDGE**  
CORPORATE REAL ESTATE, LLC

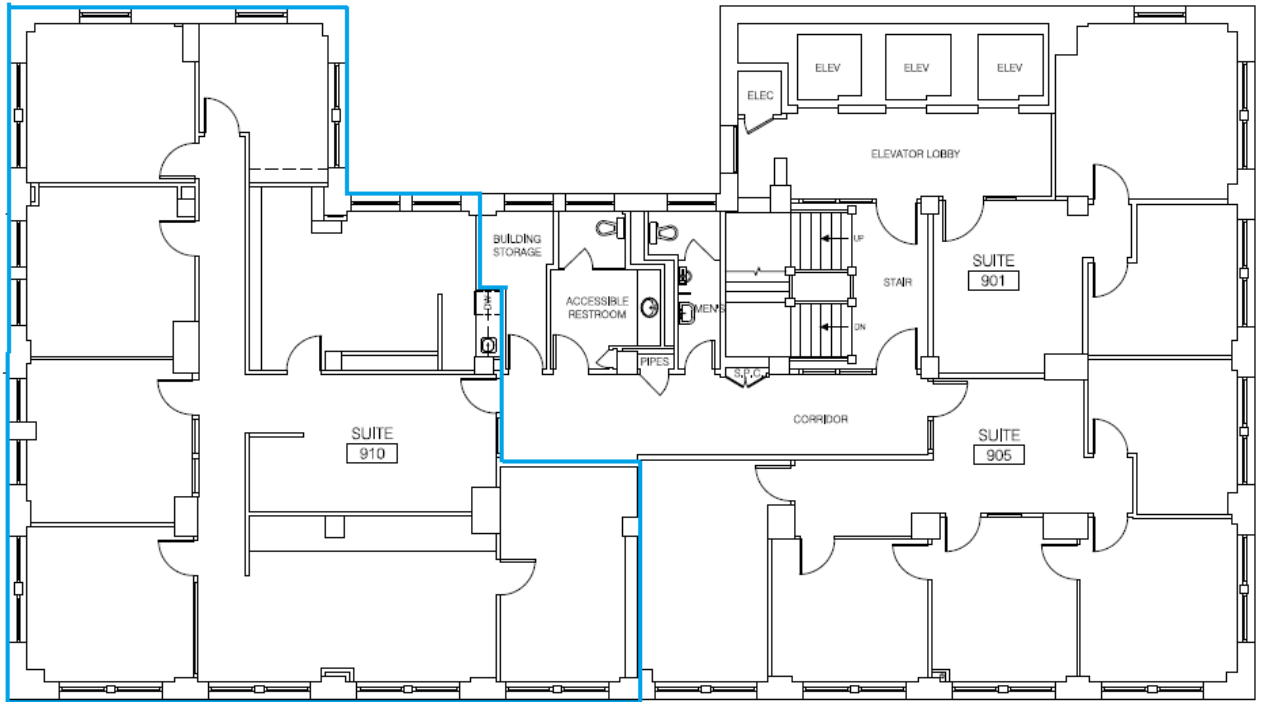
# Water View Office Sublease

## 705 2<sup>nd</sup> Ave, Seattle



**WEST EDGE**  
CORPORATE REAL ESTATE, LLC

W  
A  
T  
E  
R  
  
V  
I  
E  
W  
S



Nate White  
nate@westedgecre.com  
206-240-1060

Disclaimer: Information deemed reliable but not guaranteed. Lessee to verify all information



**WEST EDGE**  
CORPORATE REAL ESTATE, LLC

# Water View Office Sublease

## 705 2<sup>nd</sup> Ave, Seattle



**WEST EDGE**  
CORPORATE REAL ESTATE, LLC



Nate White  
nate@westedgecre.com  
206-240-1060

Disclaimer: Information deemed reliable but not guaranteed. Lessee to verify all information



**WEST EDGE**  
CORPORATE REAL ESTATE, LLC