



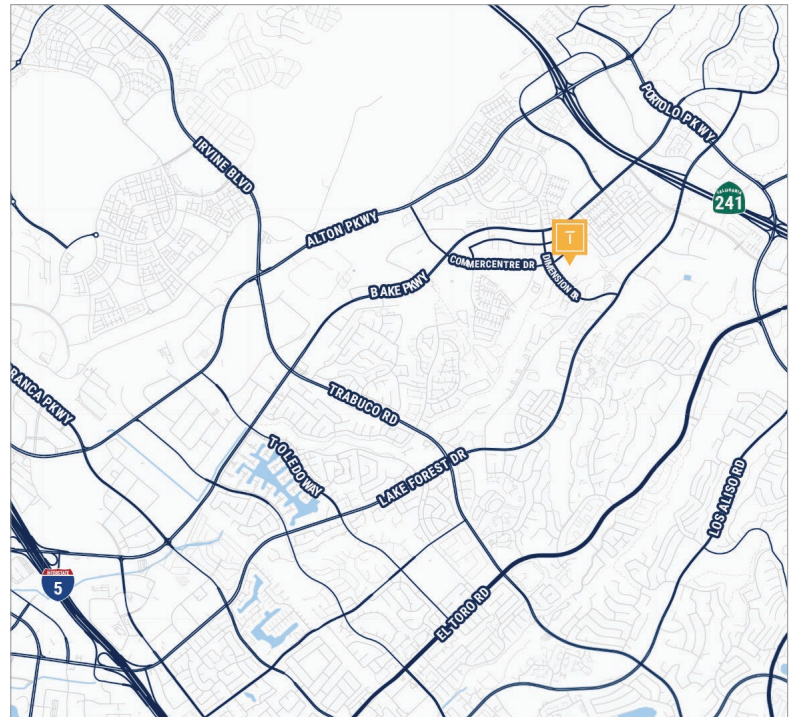
# FOR LEASE - ±2,300 SF INDUSTRIAL/FLEX CONDOMINIUM

26227 ENTERPRISE COURT | LAKE FOREST, CA 92630



## PROPERTY FEATURES:

- » Located in Pacific Commercentre Business Park
- » ±2,300 SF Industrial/Flex Condominium
- » ±700 SF of Office Space
- » ±200 SF Bonus Mezzanine
- » 17' Warehouse Clear Height
- » 400 Amps of Power (*verify*)
- » One (1) Ground Level Door Possible
- » 3:1,000 Parking Ratio
- » Fire Sprinklers
- » Zoned M1, Lake Forest
- » Convenient 241 & 133 Toll Road Access



## CONTACT US:

**TIDEMARK**

Real Estate Services

**BROKERAGE | INVESTMENTS  
PROPERTY MANAGEMENT**

**STEPHEN MARGARETIS**

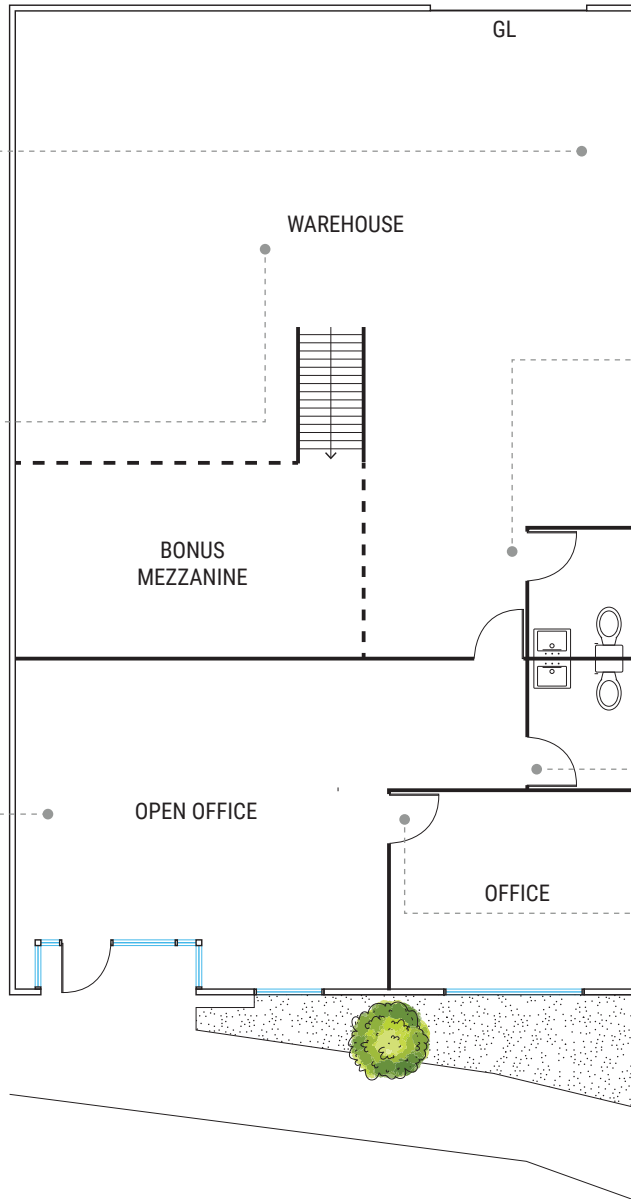
Senior Associate

(949) 439-1988

[stephen@tidemarkrealestate.com](mailto:stephen@tidemarkrealestate.com)

DRE Lic. 02112014

DISCLAIMER: The information contained herein has been obtained from the property owner or other third party and is provided to you without verification as to accuracy. We (Tidemark Real Estate Services, Inc., its brokers, employees, agents, principals, officers, directors and affiliates) make no warranty or representation regarding the information, property, or transaction. You and your attorneys, advisors and consultants should conduct your own investigation of the property and transaction.



Not to scale. Not as built.

DISCLAIMER: The information contained herein has been obtained from the property owner or other third party and is provided to you without verification as to accuracy. We (Tidemark Real Estate Services, Inc., its brokers, employees, agents, principals, officers, directors and affiliates) make no warranty or representation regarding the information, property, or transaction. You and your attorneys, advisors and consultants should conduct your own investigation of the property and transaction.