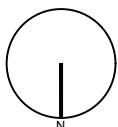


KEY PLAN:



RR CAPTIAL MANAGEMENT, INC.



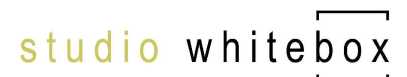
FLOOR PLAN

SCALE: 3/32" = 1'-0"

SUITE 101

2722 W. KINGSLEY RD. GARLAND, TX 75041

USF AREA: 2,127 SQFT
RSF AREA: 2,786 SQFT



4 6 9 . 7 4 4 . 5 5 9 3

DRAWN BY: STUDIO WHITEBOX DATE: 02.15.2021