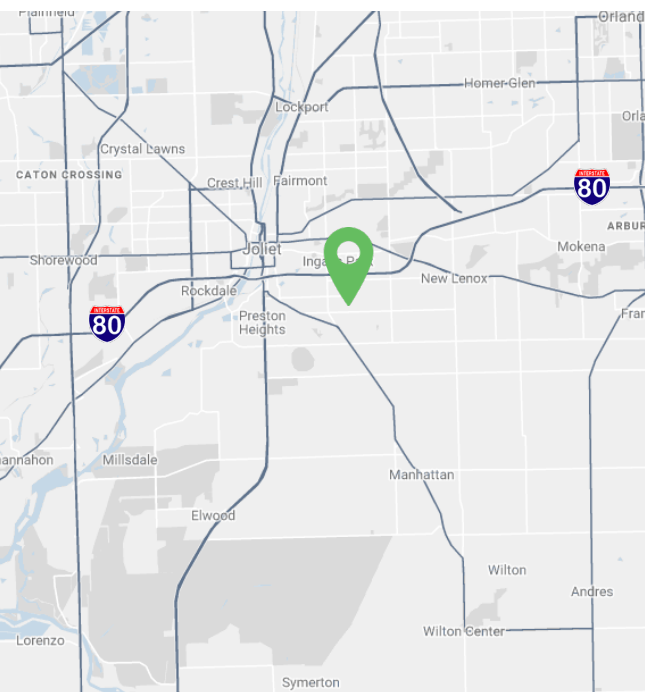


BRIGGS ST. & SPENCER RD. | JOLIET, IL

LAND AVAILABLE FOR SALE



DETAILS

- Building Size: 27,000 SF
- Total Acres: 15.52
- Parcel No. (APN): 30-07-24-300-048
- Current Zoning: Agricultural
**City of Joliet indicates they will rezone to accommodate residential*
- Real Estate Taxes (2019): \$434.66
- Utilities: Located at Spencer Road
- Ask Price: \$750,000

HIGHLIGHTS

- Up to 38 residential lots for development
- 1.5 miles to full interchange at I80 & Briggs

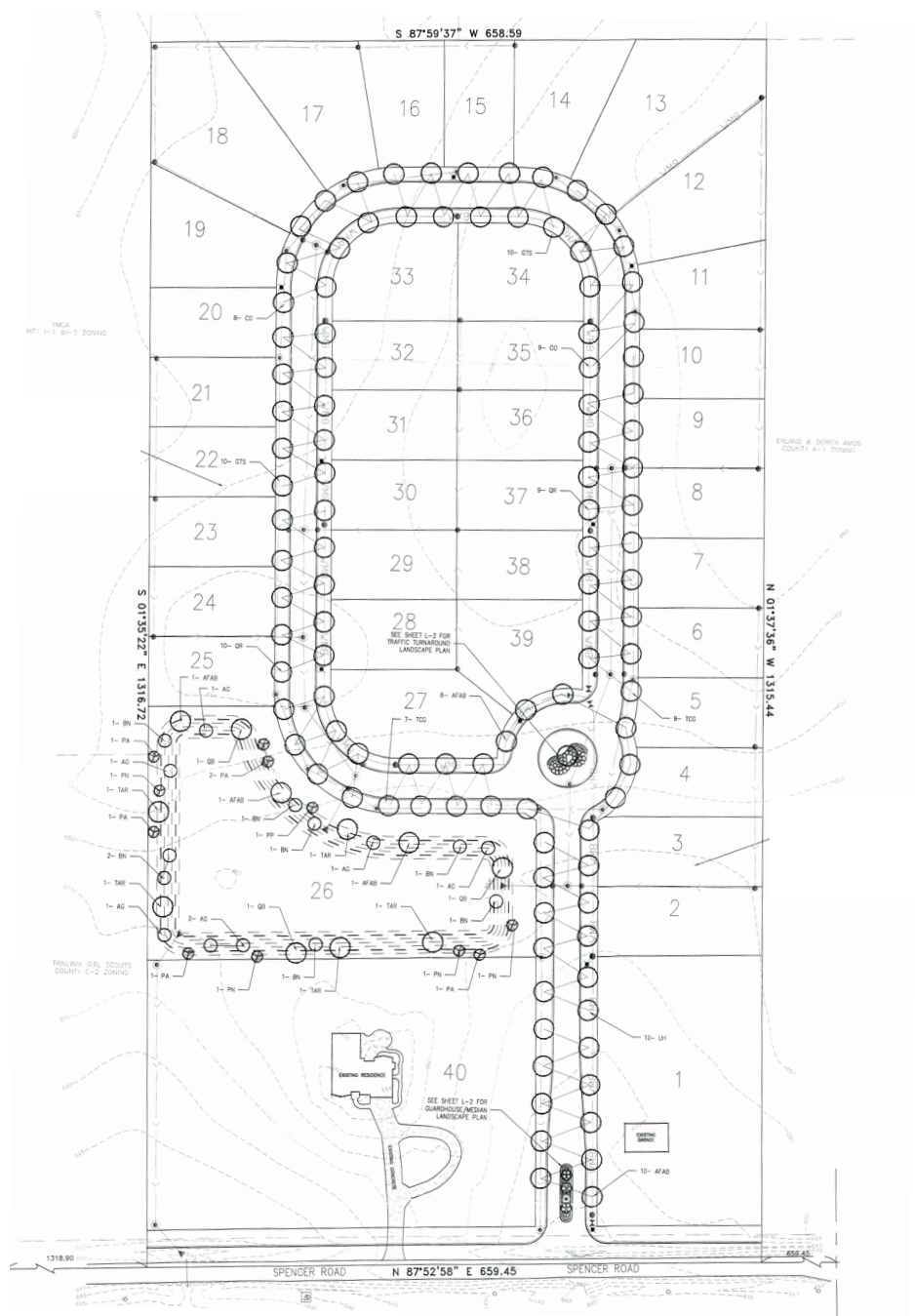


MATT GARLAND | Vice President
630.729.7945
mgarland@cawleychicago.com



BRIGGS ST. & SPENCER RD. | JOLIET, IL

POTENTIAL LAYOUT OF SUBDIVISION



MATT GARLAND | Vice President
 630.729.7945
 mgarland@cawleychicago.com

