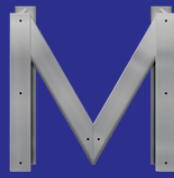


MERCER
COMMERCIAL



COMPANY
REAL ESTATE

FOR LEASE

AVAILABLE: 1,220 SF

2100 N HWY 360 #1302, GRAND PRAIRIE, TX 75050



PROPERTY FEATURES

- Office SF: 1,220
- 2 Private Offices
- 1 Breakroom
- 1 Restroom
- Open Workspace
- Can be Combined with #1301

NICK FULTON

Market Director
(469) 616-8783
nfulton@mercerc-company.com

CORBY HODGKISS, SIOR

Executive Vice President
(469) 360-3918
chodgkiss@mercerc-company.com

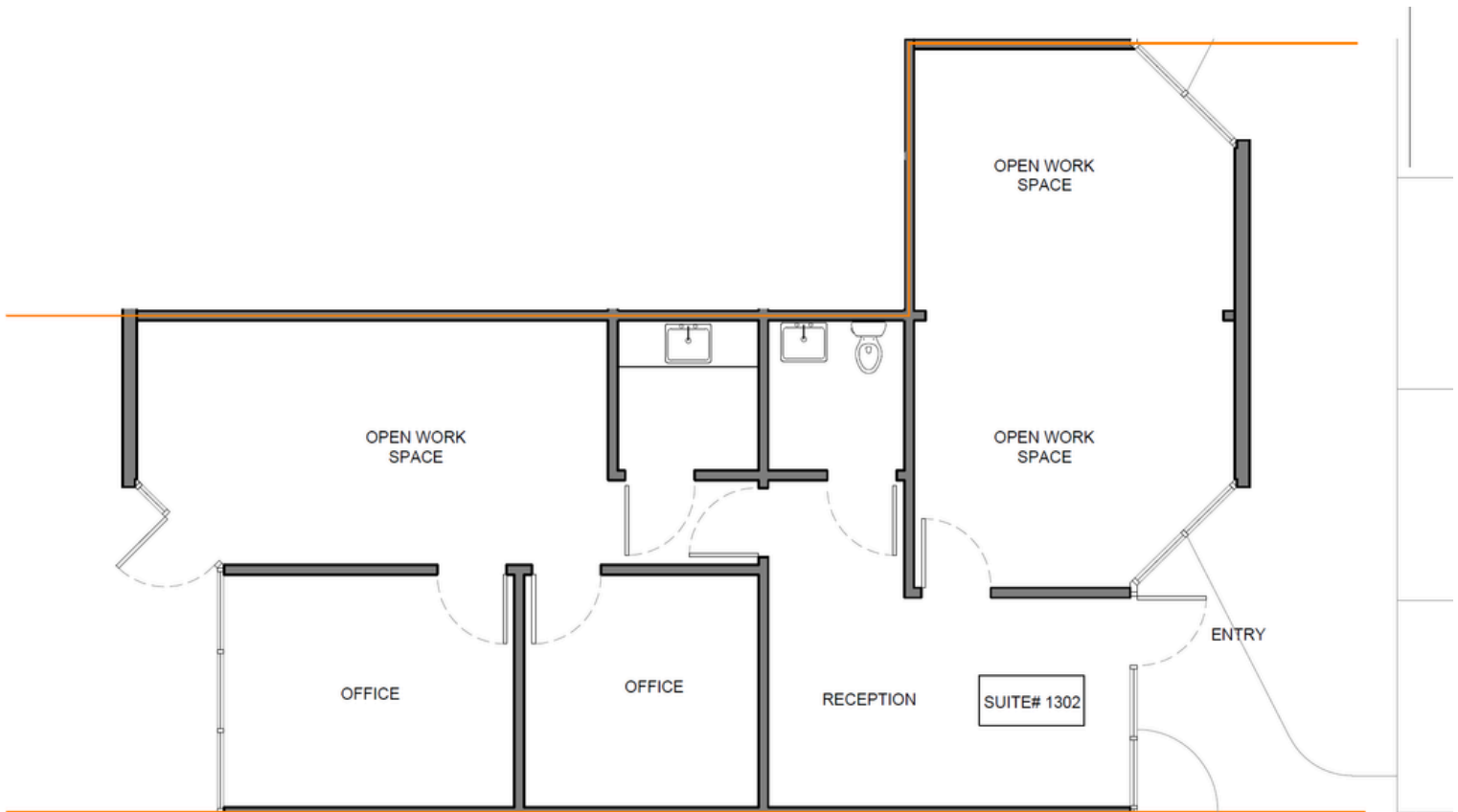
Mercer Company
2461 N Stemmons Fwy, Dallas, TX 75207

mercerc-company.com

AVAILABLE: 1,220 SF

2100 N HWY 360 #1302, GRAND PRAIRIE, TX 75050

FLOORPLAN



NICK FULTON

Market Director
(469) 616-8783



CORBY HODGKISS, SIOR

Executive Vice President
(469) 360-3918

The information contained herein has been given to us by the owner of the property or other sources we deem reliable. We have no reason to doubt its accuracy, but we do not guarantee it. All information should be verified before purchase or lease.