

2211 Smith Street

Downtown, Regina

2211 Smith Street
Regina, Saskatchewan
www.cbre.ca/regina/offices

REDUCED PRICE: \$399,000 | \$3000/month

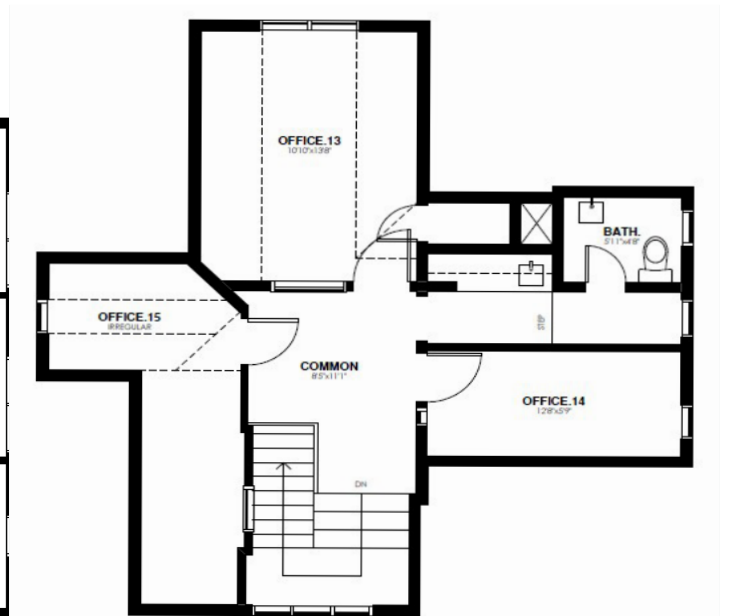
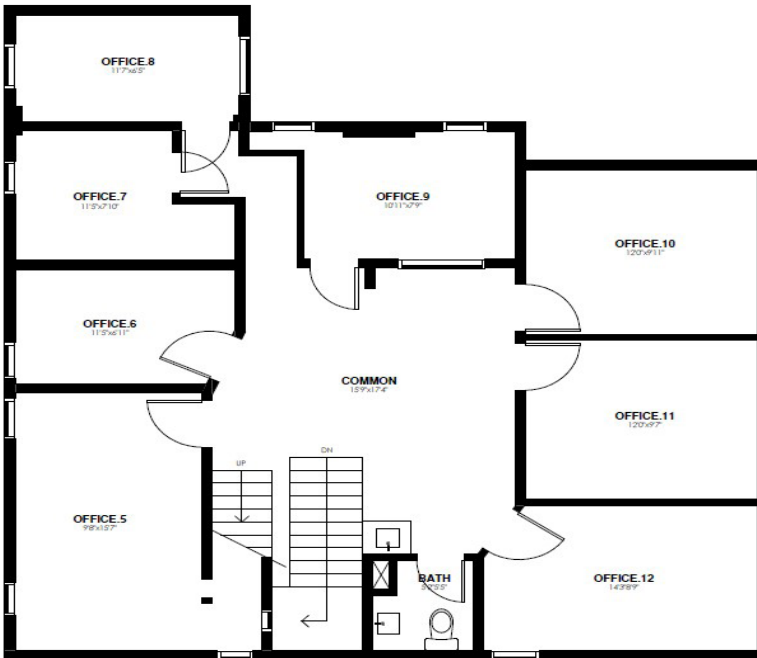


Main Floor



Second Floor

Third Floor



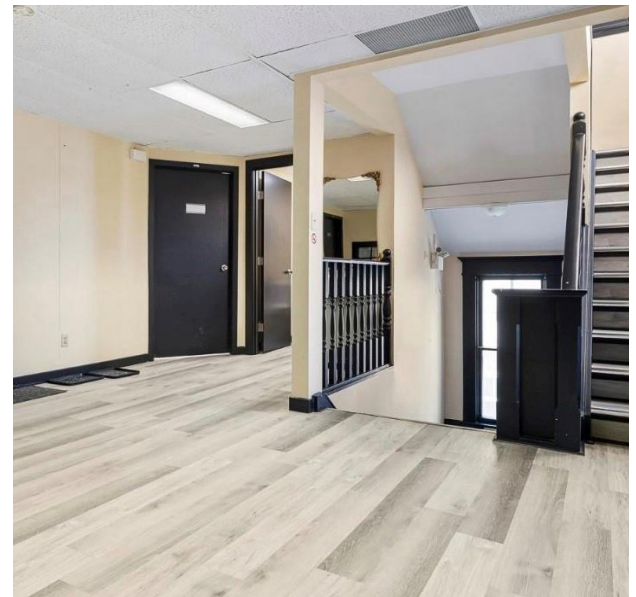
Opportunity

This historic downtown office building, built in 1907, is available for sale or lease. It offers approximately 4,280 square feet of versatile space on a 6,240 square foot lot.

The property is available immediately and includes 10 parking stalls. It can be purchased for a reduced price of \$399,000, or leased for \$3,000 per month, plus taxes, insurance, and utilities.

Details

- + Building Size: 4,280 SF (approx.)
- + Lot Size: 6,240 SF
- + For Sale: \$399,000
- + For Lease: \$3,000 / Month
 - + Taxes, Insurance & Utilities
- + Availability: Immediate
- + Built in 1907
- + Parking: 10 Stalls Included



Contact Us

Walker Moulding

Associate Vice President
+1 306 501 0609
walker.moulding@cbre.com

Erik Mehlsen

Senior Sales Associate
+1 306 539 9754
erik.mehlsen@cbre.com

Mariah Taylor-Mackin

Sales Associate
+1 306 515 3239
mariah.taylormackin@cbre.com

© 2026 CBRE, Inc. All rights reserved. This disclaimer shall apply to CBRE Limited, and to all divisions of the Corporation ("CBRE"). The information set out herein (the "Information") has not been verified by CBRE, and CBRE does not represent, warrant or guarantee the accuracy, correctness and completeness of the Information. CBRE does not accept or assume any responsibility or liability, direct or consequential, for the Information or the recipient's reliance upon the Information. The recipient of the Information should take such steps as the recipient may deem necessary to verify the Information prior to placing any reliance upon the Information. The Information may change and any property described in the Information may be withdrawn from the market at any time without notice or obligation to the recipient from CBRE.