

MOVE-IN READY CREATIVE OFFICES IN THE HEART OF HOLLYWOOD

The Metropolitan

5815-5825 W SUNSET BLVD

\$2/SF BROKER BONUS
*NEW 2+ YEAR DEALS

FOR LEASE

THE METROPOLITAN | 5815-5825 W SUNSET BLVD | LOS ANGELES, CA 90028

CBRE

The Metropolitan

BASICS

AVAILABILITIES:



SUITE 101: 5,787 SF
SUITE 104: 2,298 SF
SUITE 203: 3,421 SF
SUITE 204: 1,258 SF
SUITE 205: 3,100 SF
SUITE 207: 1,789 SF
SUITE 302: 3,259 SF
SUITE 305: 3,127 SF
SUITE 306: 1,540 SF
SUITE 401: 2,928 SF
SUITE 400: 2,940 SF



ASKING RATE: \$1.95 NNN



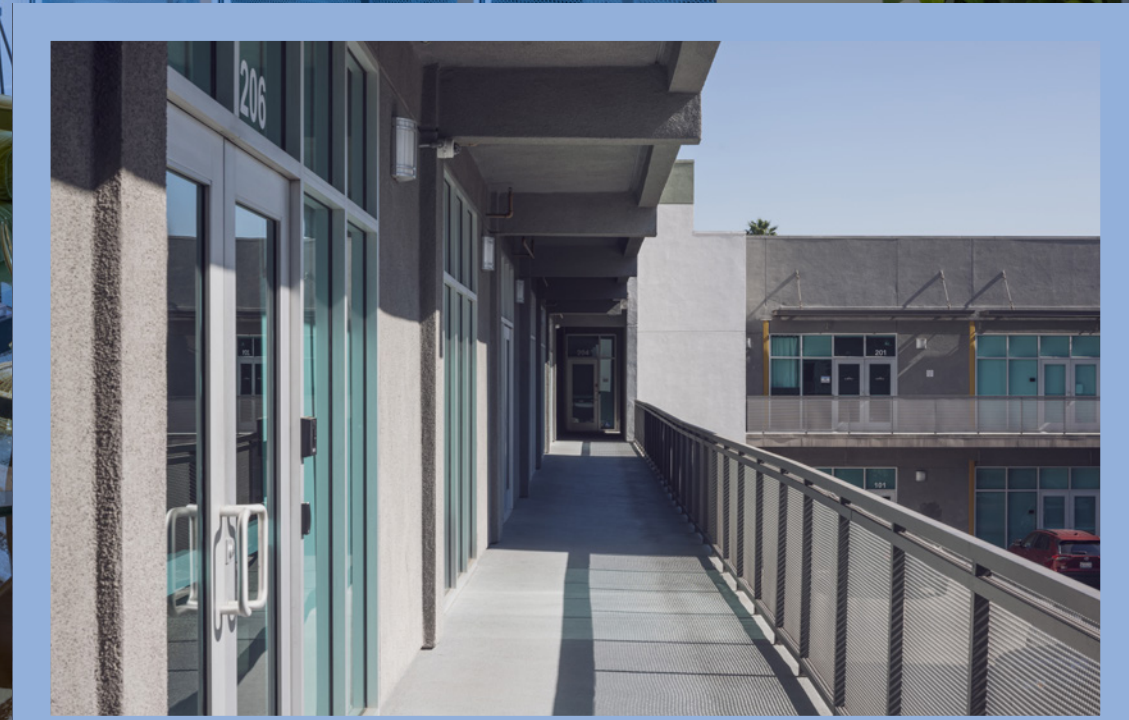
TERM: NEGOTIABLE



PARKING RATIO: 3/1,000 SF



OCCUPANCY: IMMEDIATE



The Metropolitan

HIGHLIGHTS



HIGH-END CREATIVE OFFICES
FEATURING POLISHED CONCRETE
AND EXPOSED CEILINGS



OPTION TO MODIFY SUITE LAYOUTS
AND FINISHES



SECURE BUILDING WITH GATED
PARKING AND VALET CAPABILITY



7 MINUTE WALK FROM NUMEROUS
AMENITIES INCLUDING SUGARFISH,
SWEETGREEN, AND ROSCOES.



POSITIONED DIRECTLY ACROSS
FROM NETFLIX



FIBER-OPTIC INTERNET

*Longform
Content*



The Metropolitan

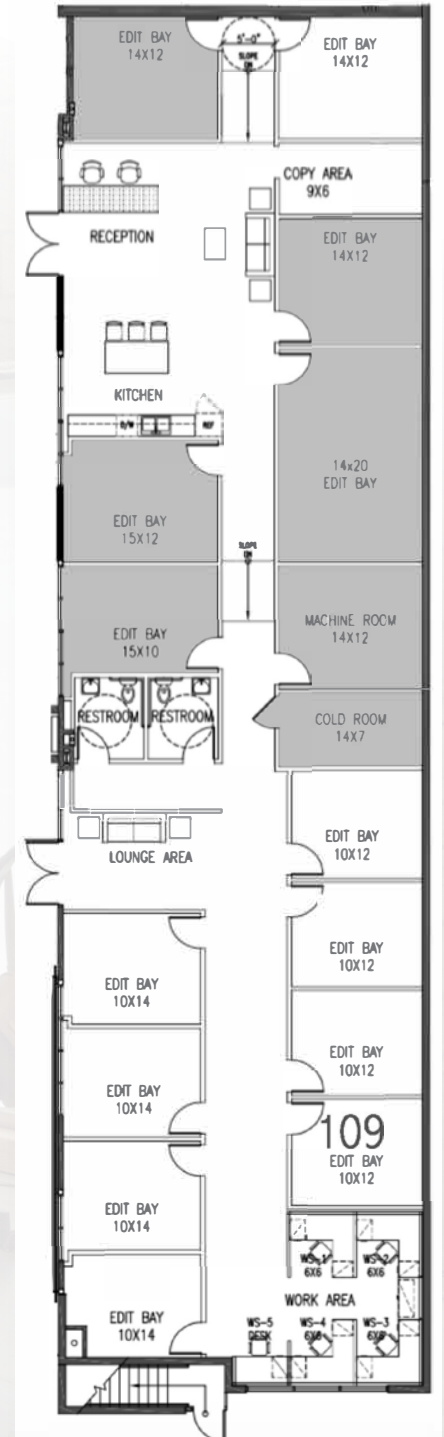
SUITE 101: 5,787 RSF



**PLUG-N-PLAY POST
PRODUCTION SPACE**

**CREATIVE OFFICE
FEATURING OPEN
KITCHENETTES,
LOUNGE AREAS &
PRIVATE
RESTROOMS SPREAD
THROUGHOUT DENSELY
BUILT OFFICES/EDIT
BAYS**

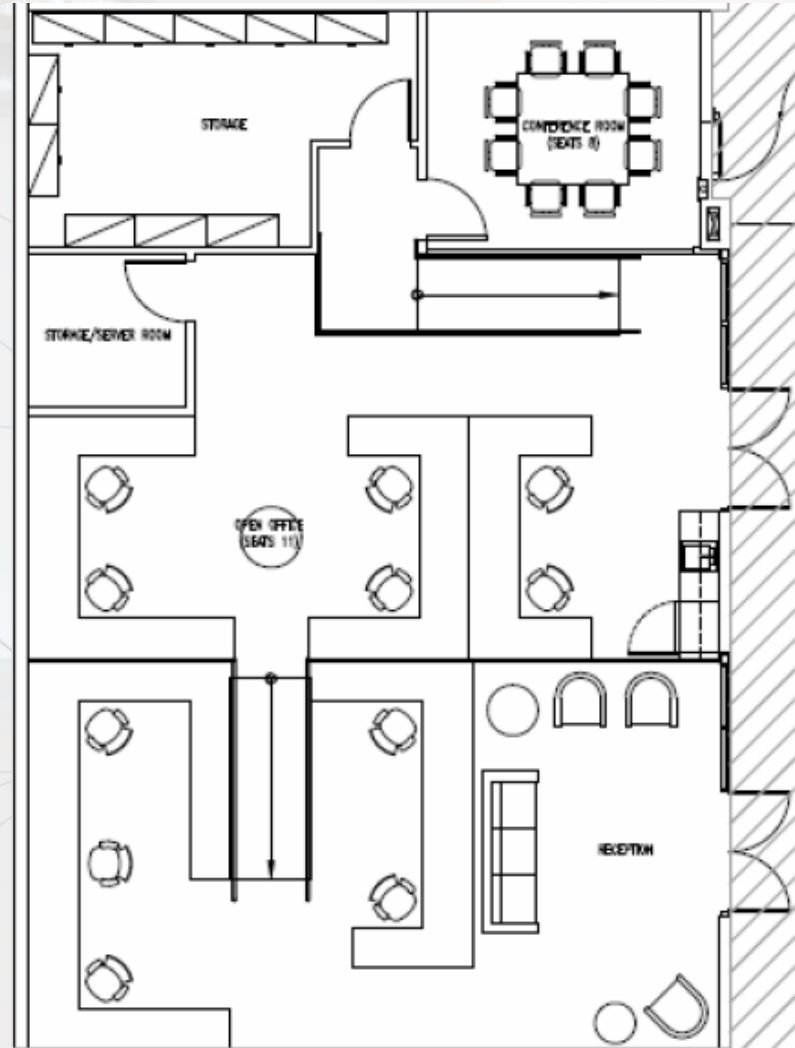
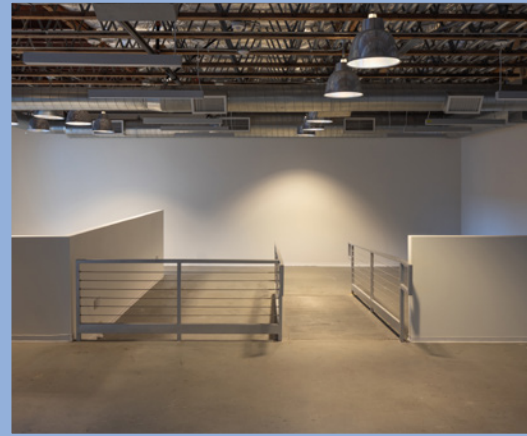
**FORMALLY OCCUPIED
BY GEIGER POST**



The Metropolitan

SUITE 104: 2,298 SF

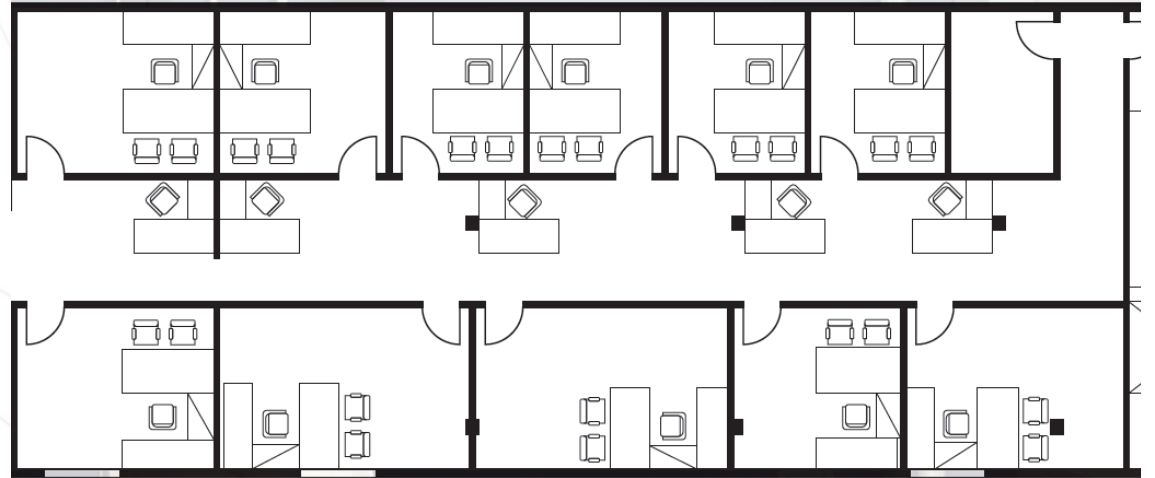
**CREATIVE OFFICE
FEATURING A CONFERENCE
ROOM, A LARGE OPEN
WORK AREA, STORAGE
AND KITCHENETTE**



The Metropolitan

SUITE 205: 3,100 SF

CREATIVE OFFICE
FEATURING 9
PRIVATE OFFICES, 1
EXECUTIVE OFFICE, 1
CONFERENCE ROOM,
AND STORAGE SPACE



The Metropolitan

SUITE 207: 1,789 SF

2ND GENERATION
RECORDING STUDIO/POST
PRODUCTION SPACE

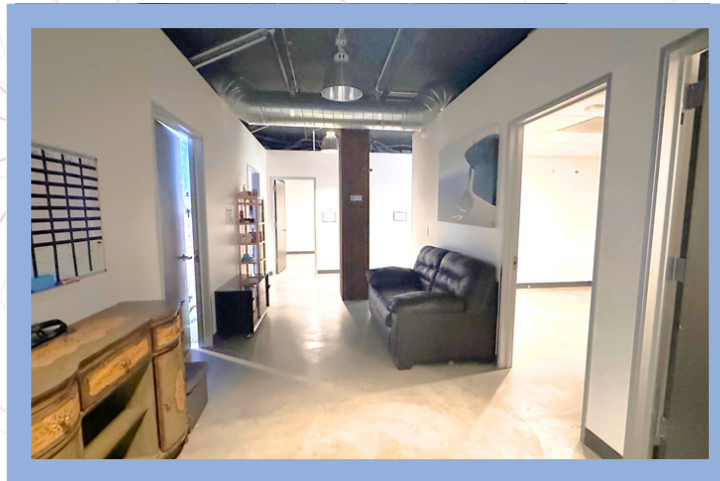
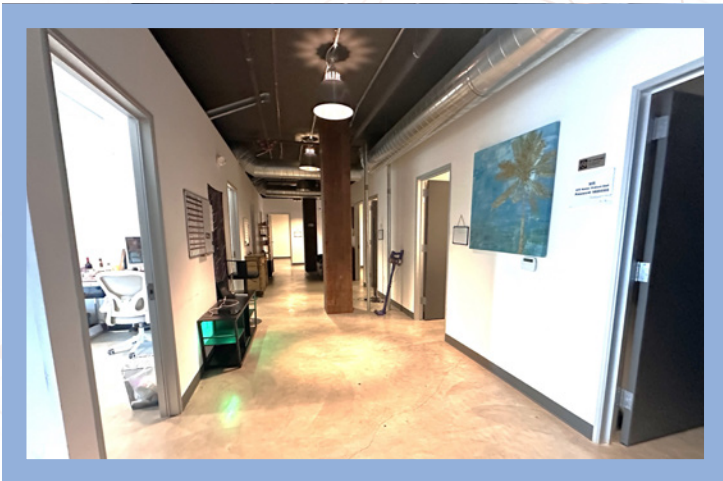
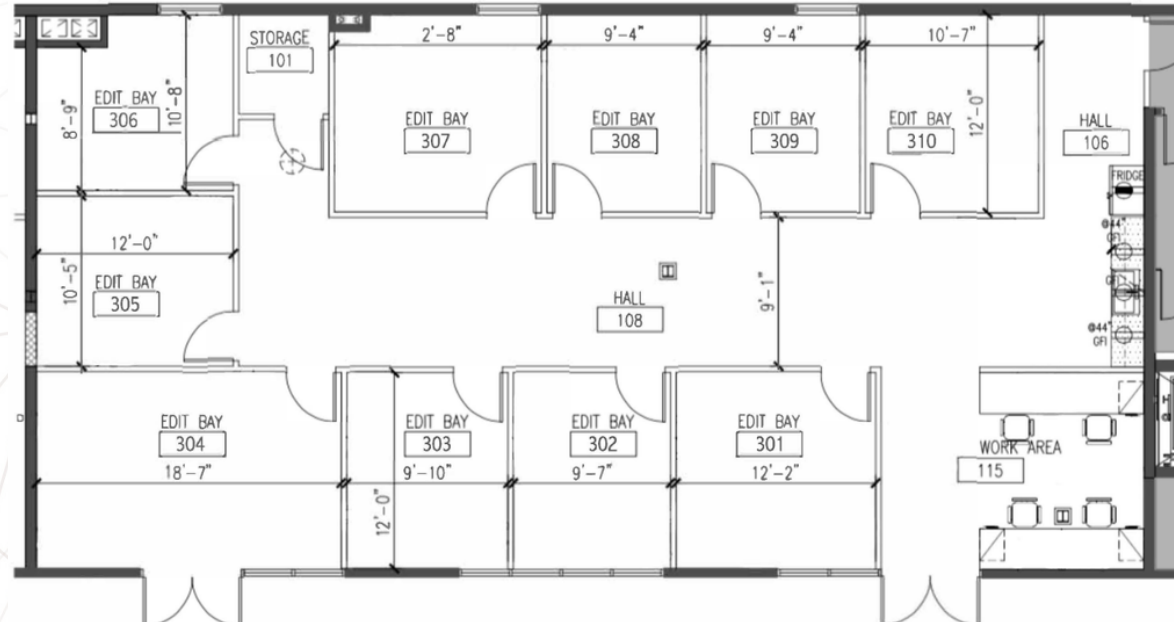
FEATURES 1 LARGE
STUDIO, 2 MEDIUM
STUDIOS, 2 CONTROL
ROOMS, 1 EDIT ROOM,
AND A PRIVATE
RESTROOM



The Metropolitan

SUITE 302: 3,259 SF

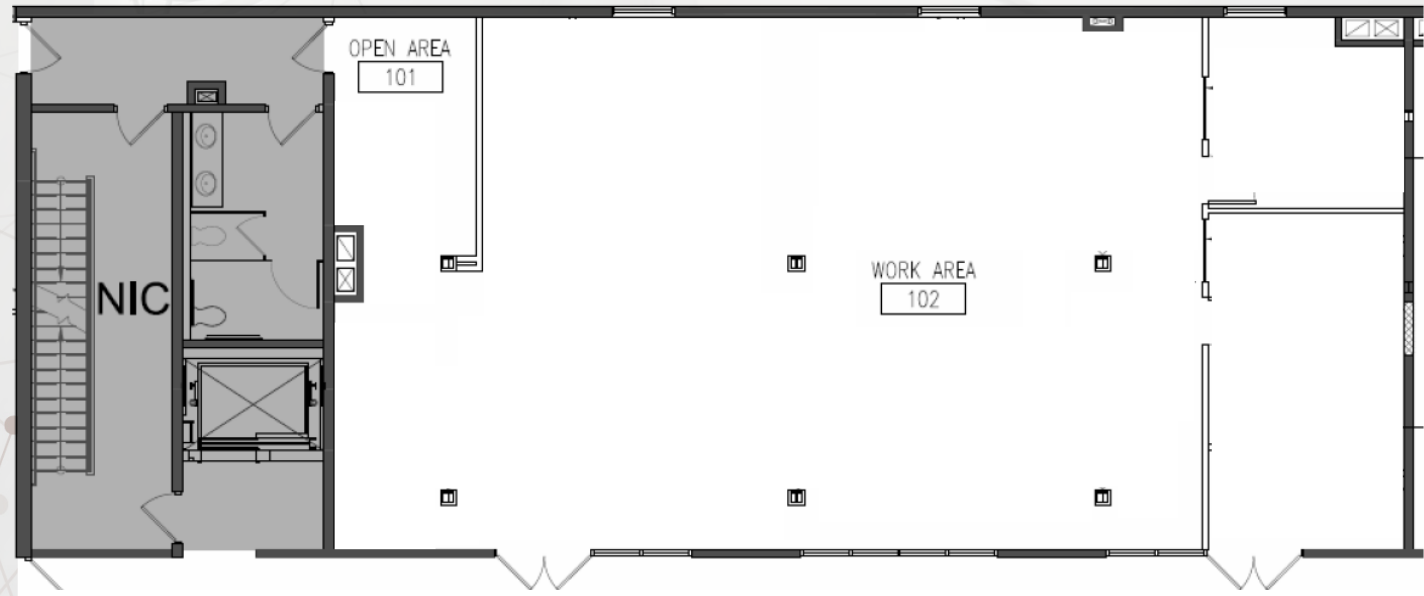
CREATIVE OFFICE
FEATURING A
RECEPTION AREA, 9
PRIVATE OFFICES, 1
CONFERENCE ROOM,
A KITCHENETTE AND
STORAGE SPACE



The Metropolitan

SUITE 305: 3,127 SF

CREATIVE OFFICE
FEATURING A LARGE
OPEN WORK AREA,
1 CONFERENCE ROOM
AND 1 PRIVATE OFFICE



The Metropolitan

SUITE 306: 1,540 SF

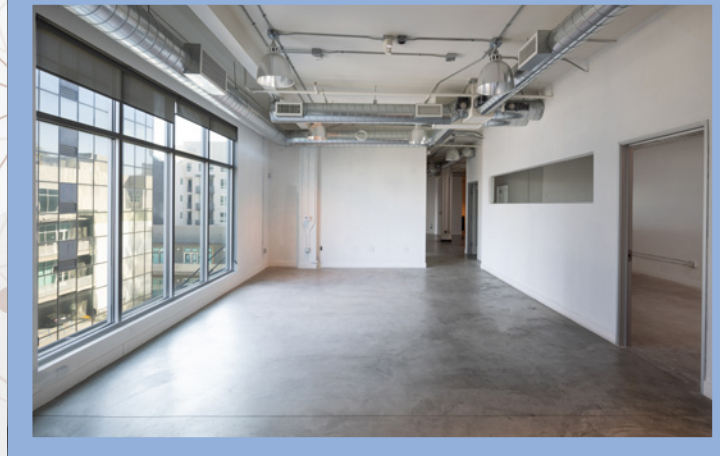
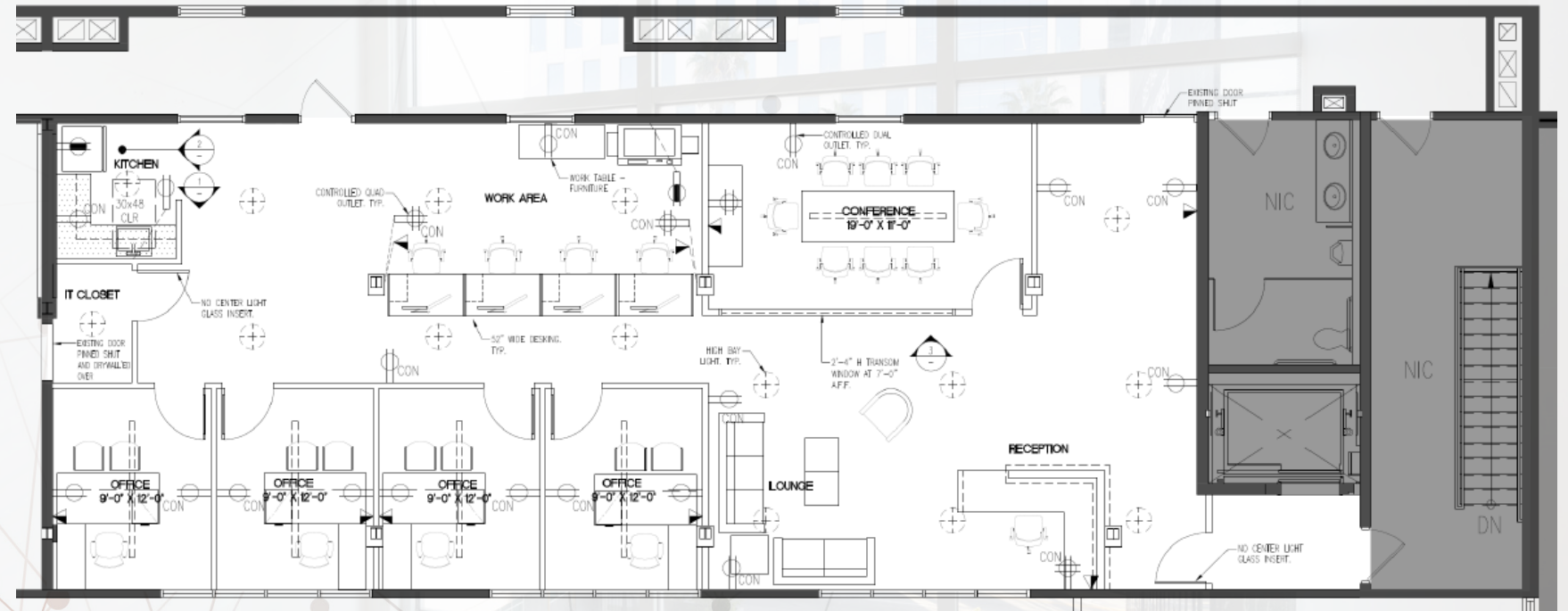


**CREATIVE OFFICE/PRODUCTION
SPACE FEATURING HIGH CEILING
AND OPEN LAYOUT - OPTION TO
ADD CYCLORAMIC WALLS, OFFICES
AND A CONFERENCE ROOM**

The Metropolitan

SUITE 401 - 2,928 SF

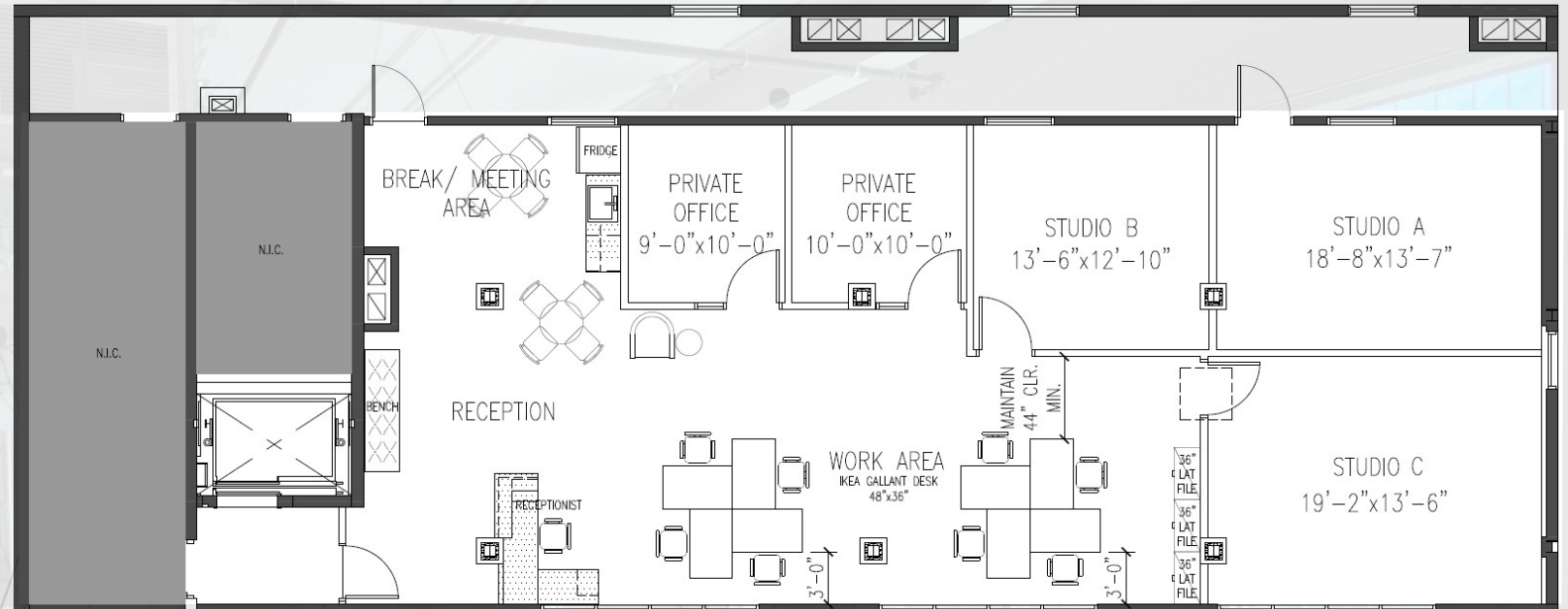
CREATIVE OFFICE FEATURING
**4 PRIVATE OFFICES, 1
CONFERENCE ROOM, 2
OPEN WORK AREAS, AND
A KITCHENETTE - PRIVATE
ELEVATOR ID.**



The Metropolitan

SUITE 404 - 2,940 SF

CREATIVE OFFICE
FEATURING 2 PRIVATE OFFICES, 3 CONFERENCE ROOMS, AN OPEN WORK AREA, A KITCHENETTE, AND RECEPTION AREA.



CENTURY CITY

Sunset LAS PALMAS STUDIOS

CIMANYS

NETFLIX

Spitz Coffee

veggiegrill.

tender greens

Sunset GOWER STUDIOS

technicolor

sweetgreen

SUGARFISH BY SUSHI MOZAWA

Sunset BRONSON STUDIOS

NETFLIX

SUNSET BLVD.

NETFLIX

5815 W SUNSET BLVD

Chick-fil-A

groundwork

TCL

CNN

BLAZE PIZZA

BLAZE PIZZA

ROSCINI'S

NeueHouse

HOLLYWOOD

Capitol RECORDS

PANTAGES

LAIFITNESS.

NEARBY TENANTS & AMENITIES

MOVE-IN READY CREATIVE OFFICES IN THE HEART OF HOLLYWOOD

The Metropolitan

FOR LEASE

5815-5825 W SUNSET BLVD

FOR MORE INFORMATION,
PLEASE CONTACT:

TAYLOR WATSON

Lic. 01958238
+1 310 550 2624
Taylor.Watson@cbre.com

CHRIS TAVERNER

Lic. 02084449
+1 310 550 2545
Chris.Taverner@cbre.com

CBRE

© 2026 CBRE, Inc. All rights reserved. This information has been obtained from reliable sources but has not been verified for accuracy or completeness. CBRE, Inc. makes no guarantee, representation, or warranty and accepts no responsibility or liability for the accuracy, completeness, or reliability of the information contained herein. You should conduct a careful, independent investigation of the property and verify all information. Any reliance on this information is solely at your own risk. CBRE and the CBRE logo are service marks of CBRE, Inc. All other marks displayed on this document are the property of their respective owners, and the use of such marks does not imply any affiliation with or endorsement of CBRE. Photos herein are the property of their respective owners. Use of these images without the express written consent of the owner is prohibited. The broker bonus incentive is being offered to brokers who sign a 2+year lease commencing. CBRE does not accept nor assume any responsibility or liability, direct or indirect, relating to these broker incentives. All CBRE brokers eligible to receive these incentives must disclose such incentive to the tenant prior to signing a lease.