



FOR SALE OR LEASE

Stotan Crossings Woodridge

221,400 SF
Total building size

11231 Katherines Crossing
Woodridge, Illinois

Q1 2027 Delivery
15.13 acres



Sean Henrick, SIOR
+1 847 518 3215
sean.henrick@cushwake.com

Jason West, SIOR
+1 847 518 3210
jason.west@cushwake.com

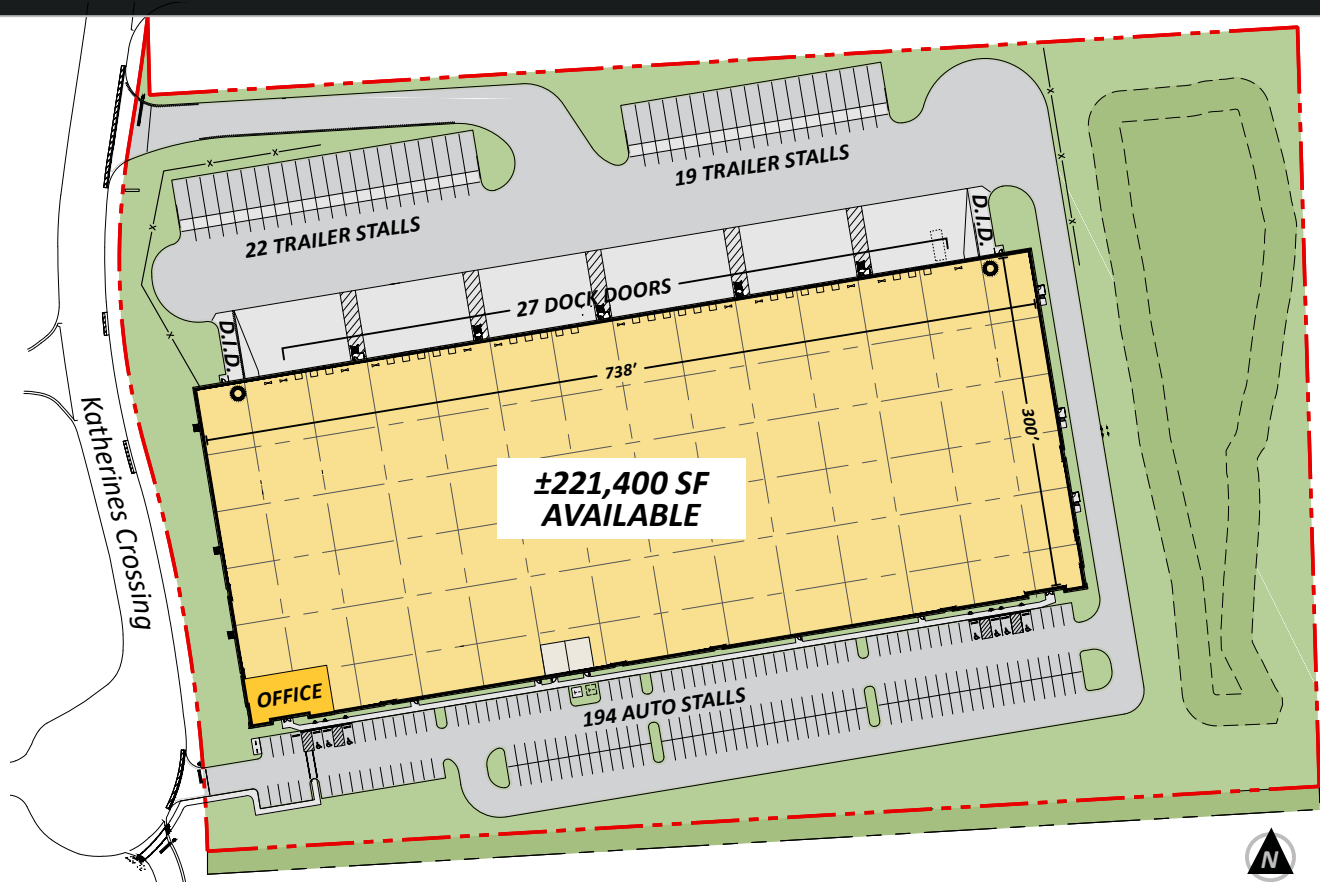
Ryan Klink
+1 847 518 3211
ryan.klink@cushwake.com

Connor Niego
+1 708 870 1531
connor.niego@cushwake.com

Stotan Crossings Woodridge

11231 Katherines Crossing • Woodridge, Illinois

221,400 SF
FOR SALE OR LEASE



SITE SPECIFICATIONS

Site Size (Acres)	15.13	Column Spacing	54' W x 50' D
Building Size (Sq Ft)	221,400	Auto Parking	194 spaces
Available Size (Sq Ft)	221,400 (Divisible)	Trailer Parking	41 spaces
Office Size (Sq Ft)	±3,000 SF	Power	4,000 Amps
Clear Height	36'	Zoning	M-1 Manufacturing District
Loading Docks	27 Exterior, Expandable to 40	Date Available	Q1 2027 Delivery
Drive in Doors:	2	Asking Rate/Price	Subject to Offer



Sean Henrick, SIOR
+1 847 518 3215
sean.henrick@cushwake.com

Jason West, SIOR
+1 847 518 3210
jason.west@cushwake.com

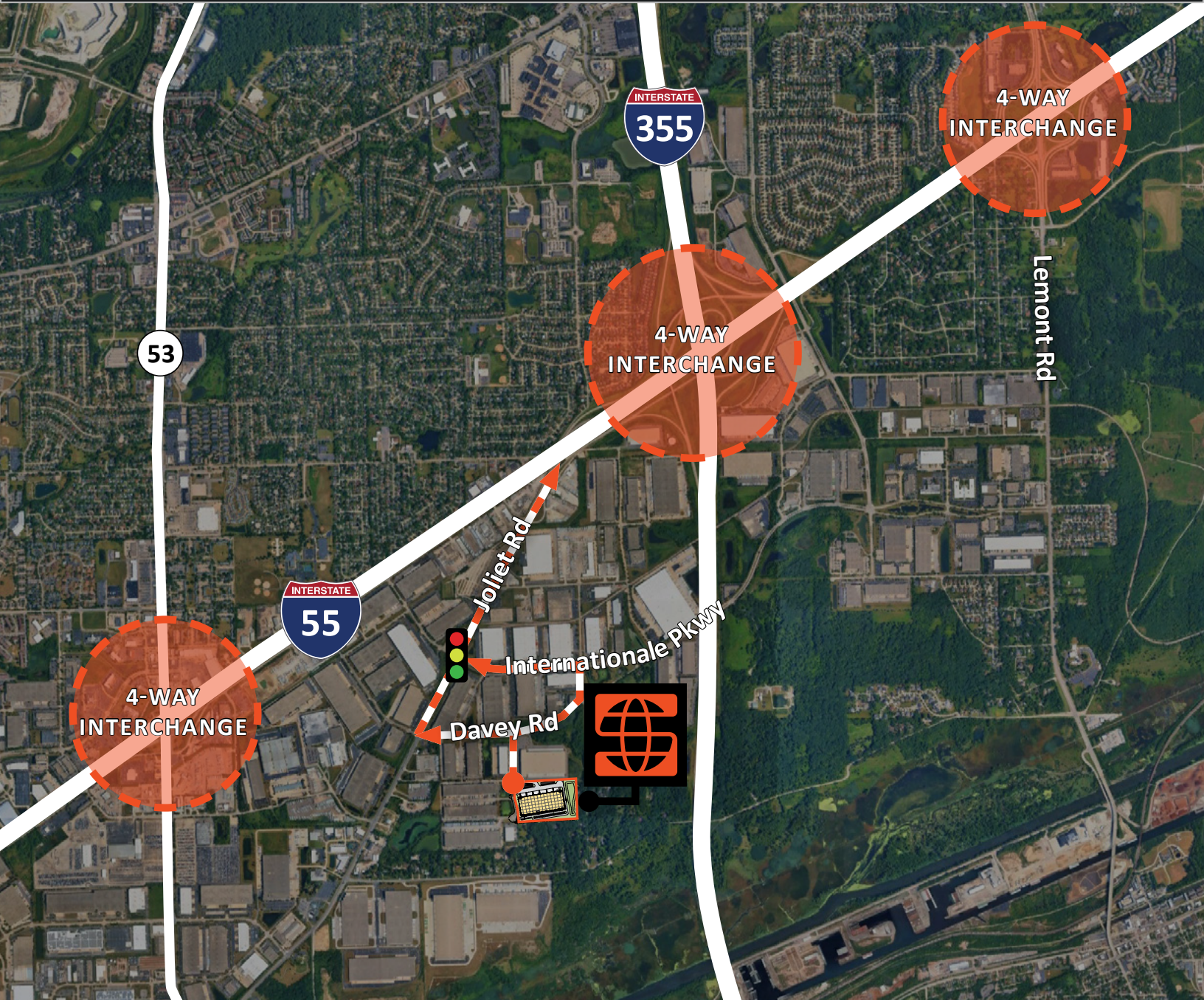
Ryan Klink
+1 847 518 3211
ryan.klink@cushwake.com

Connor Niego
+1 708 870 1531
connor.niego@cushwake.com

Stotan Crossings Woodridge

11231 Katherines Crossing • Woodridge, Illinois

221,400 SF
FOR SALE OR LEASE



DRIVE TIMES

1.7 miles / 4 minutes to I-355

1.7 miles / 4 minutes to I-55



Sean Henrick, SIOR
+1 847 518 3215
sean.henrick@cushwake.com

Jason West, SIOR
+1 847 518 3210
jason.west@cushwake.com

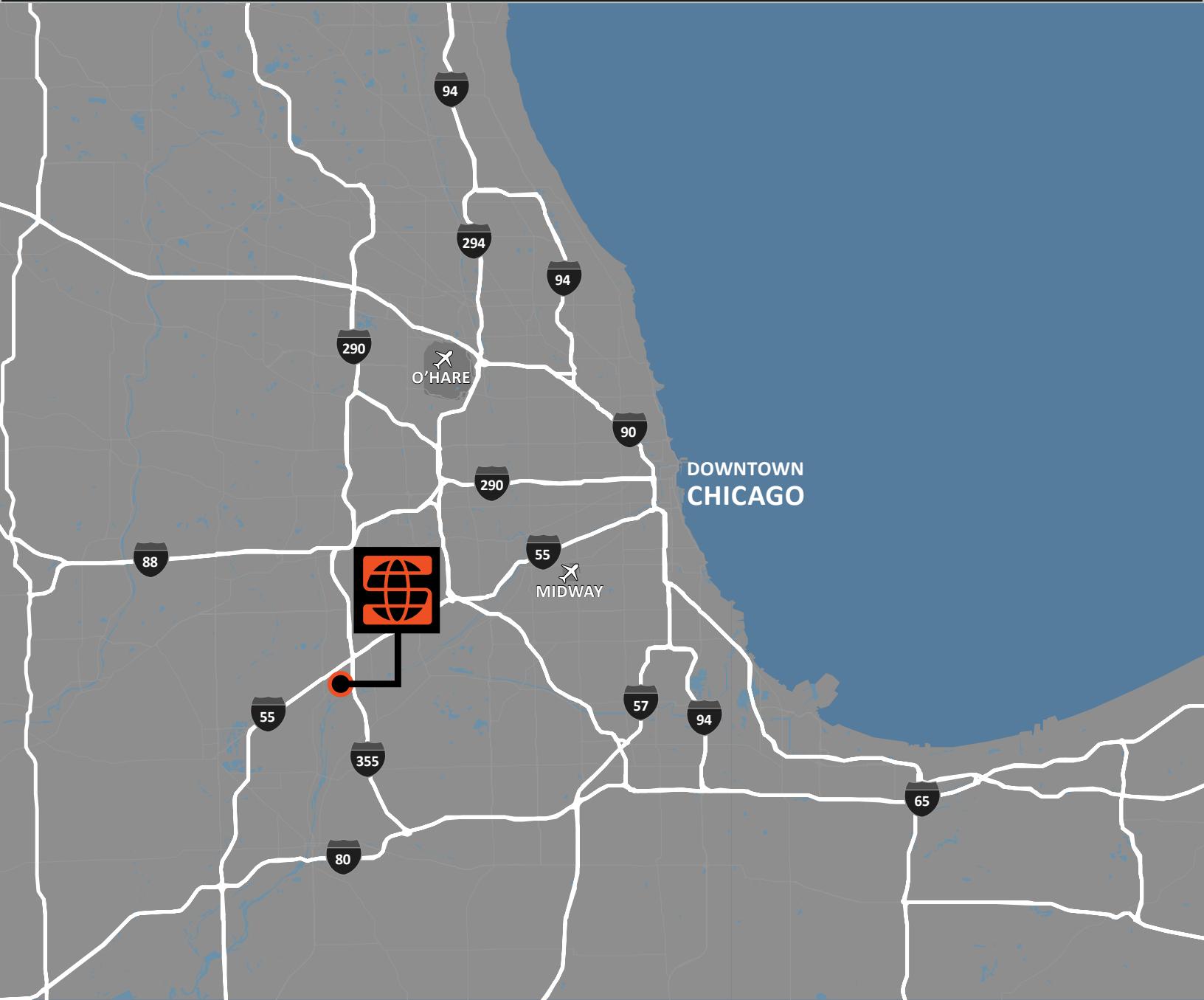
Ryan Klink
+1 847 518 3211
ryan.klink@cushwake.com

Connor Niego
+1 708 870 1531
connor.niego@cushwake.com

Stotan Crossings Woodridge

11231 Katherines Crossing • Woodridge, Illinois

221,400 SF
FOR SALE OR LEASE



20 miles to Midway Airport 28 miles to downtown Chicago 30 miles to O'Hare Airport



Sean Henrick, SIOR
+1 847 518 3215
sean.henrick@cushwake.com

Jason West, SIOR
+1 847 518 3210
jason.west@cushwake.com

Ryan Klink
+1 847 518 3211
ryan.klink@cushwake.com

Connor Niego
+1 708 870 1531
connor.niego@cushwake.com