

1101 Unix Drive Morganton, NC



AVAILABLE FOR LEASE
210,000 SF on 31.48 Acres

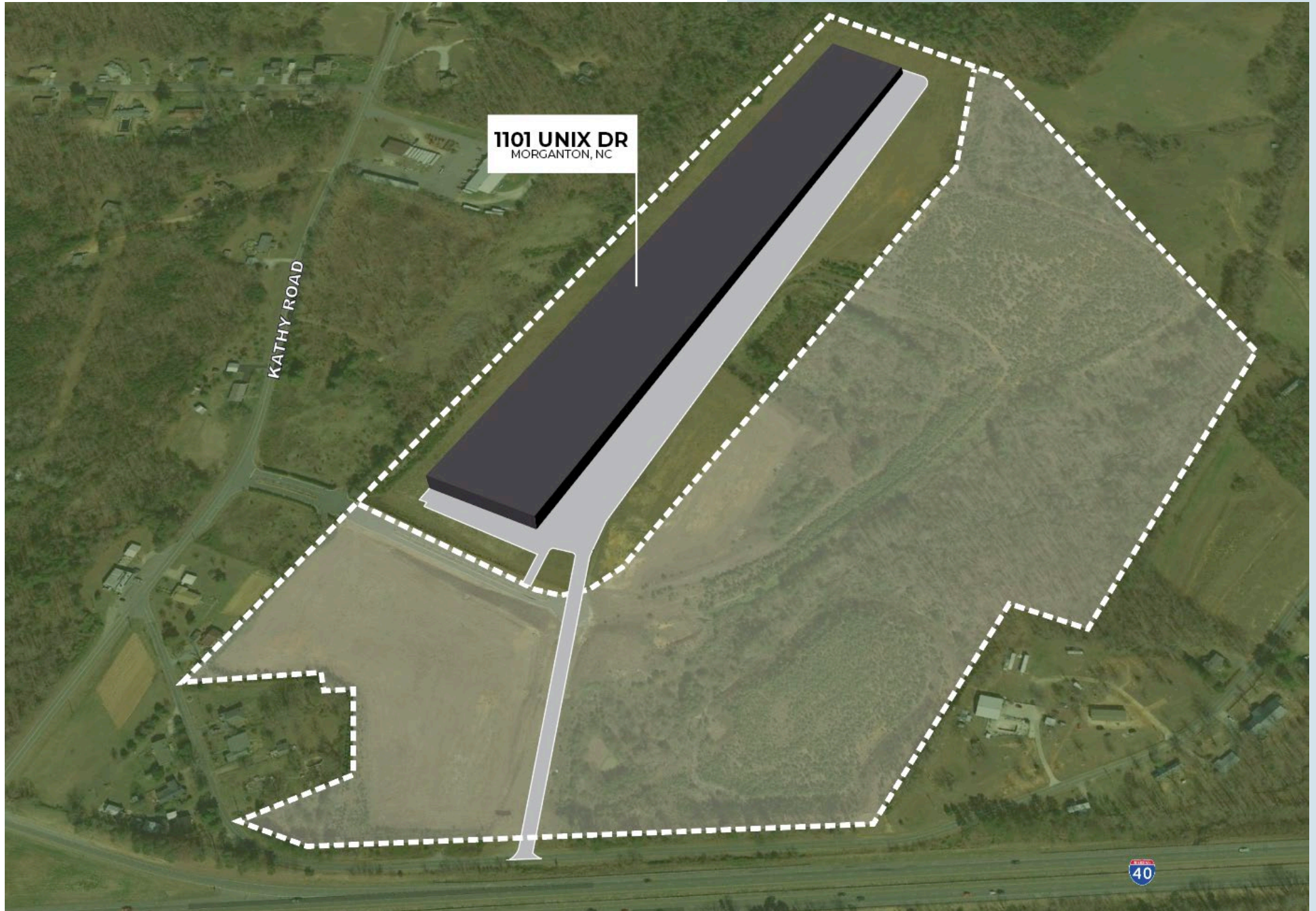
NEWMARK

PROPERTY SPECIFICATIONS

SPACE AVAILABLE	100,000 SF – 210,000 SF (Divisible)
YEAR BUILT	2026
LOT SIZE	31.48 AC
DIMENSIONS	700' x 300'
OFFICE SF	To user's specifications
CEILING HEIGHTS	30' (Min) – 32' (Max)
COLUMN SPACING	50' X 50'
LOADING	(20) - 8' X 9' dock high insulated overhead doors 125' truck court depth
FLOOR	8" concrete floor slab at 4,000 psi on 6 mil polyethylene vapor barrier over 4" aggregate base
LIGHTING	Orion LED demonstration lighting (4,000 K, 32976 lumens)
SPRINKLERS	ESFR fire suppression system with K-19 factor sprinkler heads
PARKING	South Wall: designed for 60 paved, marked and lighted spaces.
HEAT	Ceiling-hung propane gas-fired unit heaters
UTILITIES	<p><u>Power:</u> City of Morganton</p> <ul style="list-style-type: none"> Primary Line: 12.47kv grounded Wye Transformer: (2) 1,500 KVA transformers onsite; one servicing these suites Interior Switchgear: 2,500 amps at 480Y/277v, 3-phase, 4-wire <p><u>Water:</u> Burke County – 12" main; 2" domestic</p> <p><u>Sewer:</u> Burke County – 8" main; 6" lateral</p> <p><u>Gas:</u> Natural gas to be delivered Q32026 (currently serviced by 30,000-gallon liquid propane tank)</p> <p><u>Fiber:</u> Available</p>







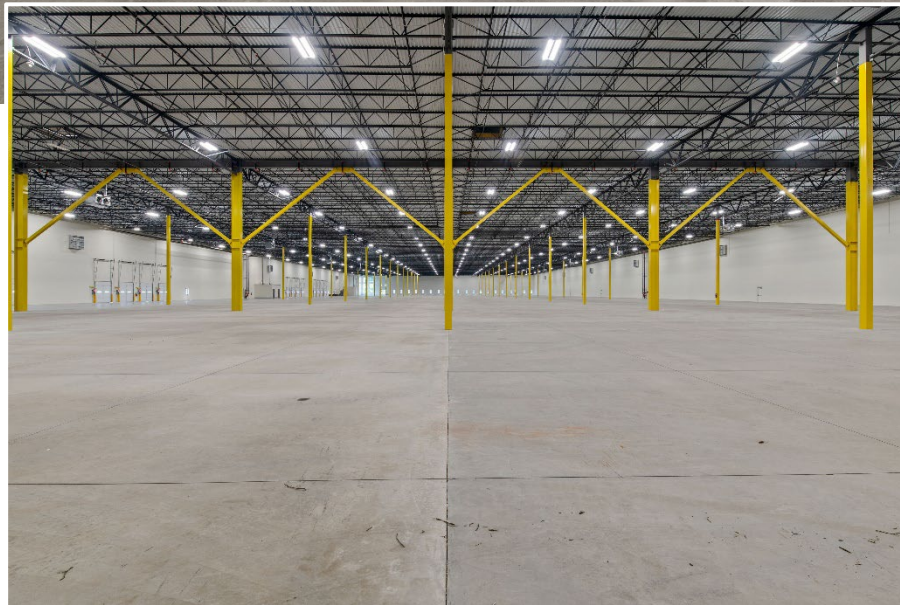
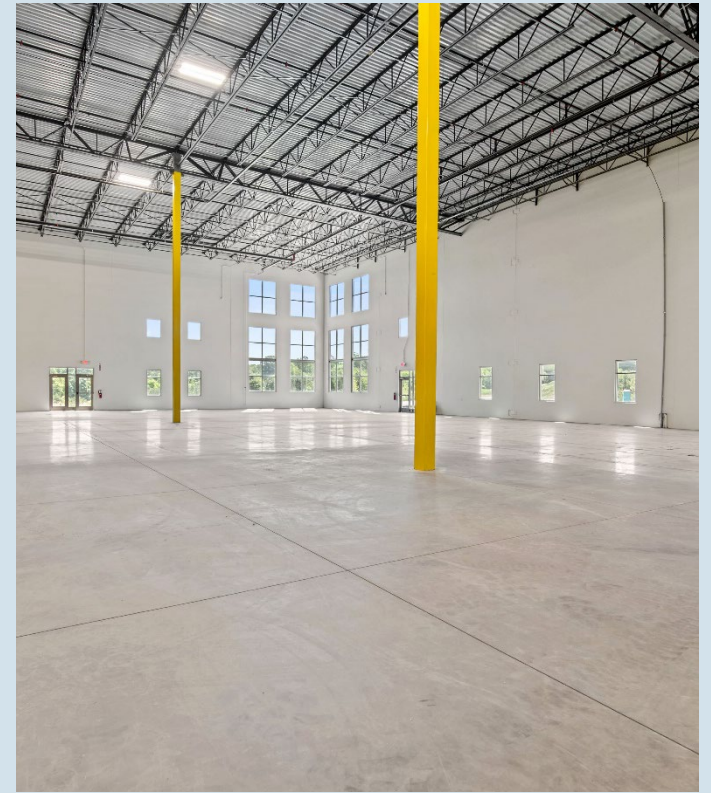
Property Location

1101 Unix Dr, Morganton, NC



Interior Photos

1101 Unix Dr, Morganton, NC



Exterior Photos

1101 Unix Dr, Morganton, NC



20
DOCK DOORS



————— 1101 Unix Drive —————

Industrial Brokerage Team:

THOMAS W. TURNER, SIOR
thomas.turner@nmrk.com
t 704-208-5243

ZACK DALTORIO
zack.daltorio@nmrk.com
m 919-805-4433

JH Morris
jh.morris@nmrk.com
m 334-333-7635

NEWMARK

The information contained here in has been obtained from sources deemed reliable but has not been verified and no guarantee, warranty or representation, either express or implied, is made with respect to such information Terms of sale or lease and availability are subject to change or withdrawal without notice.