

48

40-A-032  
7.2 AC

McCrory, Roy  
& Heirs  
Trust  
3052-485

248.48  
NB40-046  
9 AC  
315.6

NB40 031 Millington 1/2  
80 AC Gibson 1/2 Trust

40-A 003  
42.22 AC

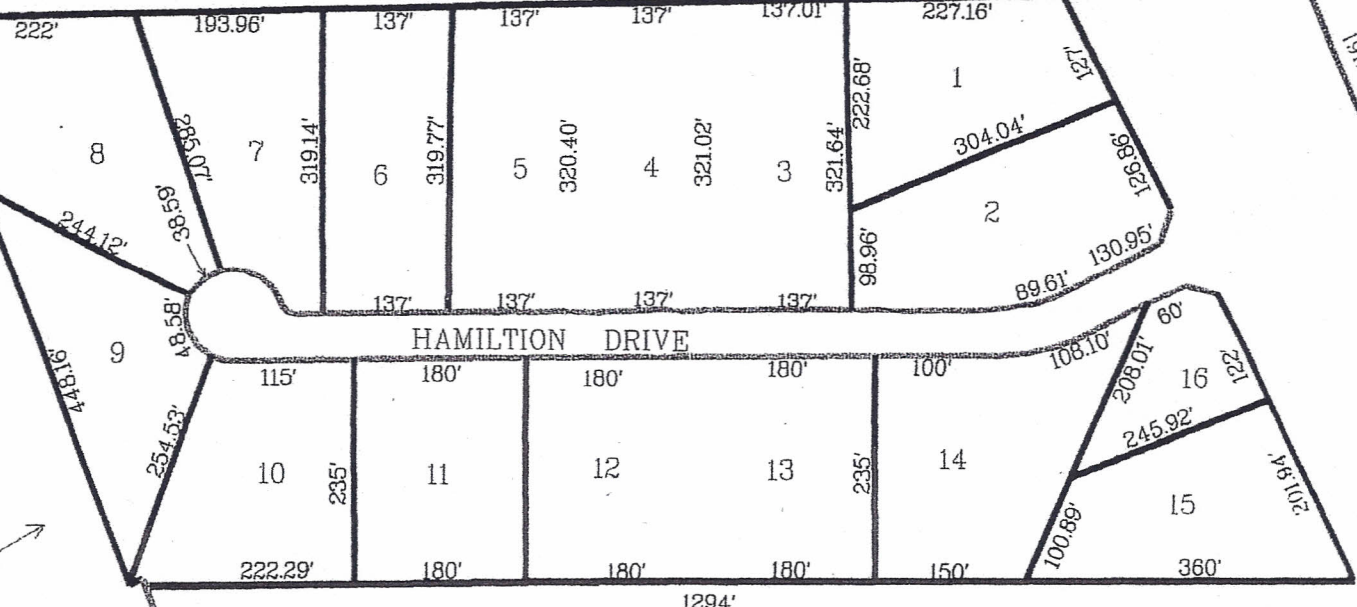
883' 1640 N. MAIN STREET

40-A 015 Christian 1/3 Jack  
6.90 AC Christian, Warren & IVA 2/3

Christian, Warren  
40-A 016 & IVA  
2 AC  
509' 1620 N. MAIN STREET

576'

NB40 037 United Design Corp. 2037-903  
8.90 AC



40-A 008 Town of Noble  
8.90 AC 562-600

S.E. 4th AVENUE

NOBLE INDUSTRIAL COMPLEX

612.50' 627' 5022' 5726' 173.70' 1003.80'

1E