



LEGEND	
EXISTING WALLS	NEW WALLS
EXISTING DOORS	NEW DOORS
EXISTING LOW PARTITIONS	NEW LOW PARTITIONS
EXISTING DEMO PARTITIONS	NEW DEMO PARTITIONS
NEW RELOCATED DOOR	N/A

ISSUE DATES

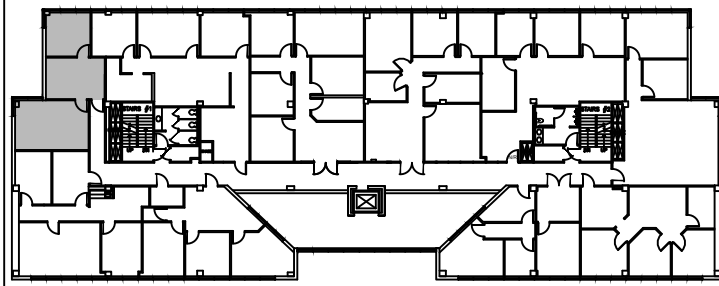
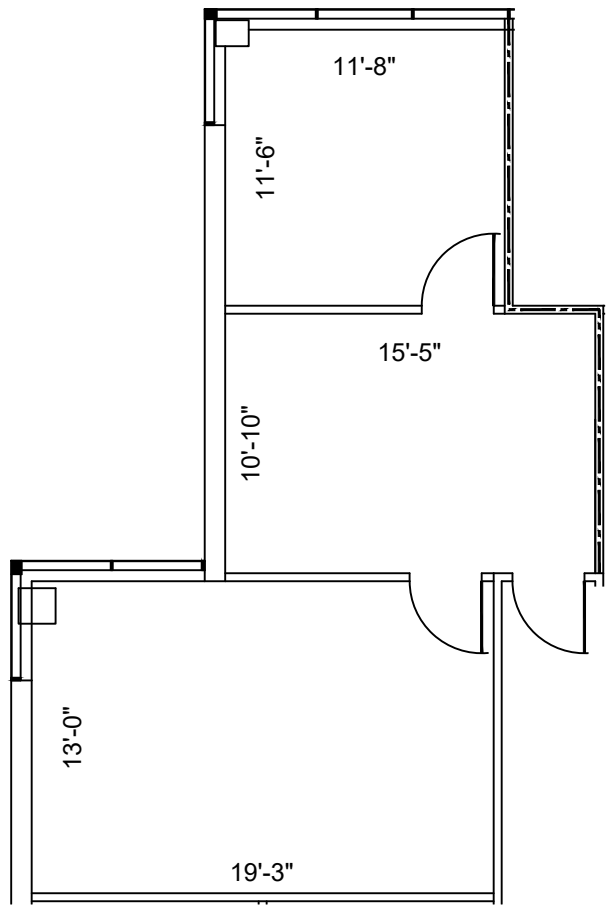
DATE	DESCRIPTION
11-09-2022	ISSUE FOR REVIEW

PROJECT: ONE PARK TEN PLACE  
 16365 PARK TEN PLACE BLVD. HOUSTON, TX 77084  
 SUITE 345

PROJECT: ONE PARK TEN PLACE	DATE: 11-09-2022
PLANT SCALE: 1/8"=1'-0"	SHEET SIZE: 8.5 X 11
CHECKED BY: WM	DRAWN BY: WM
FILE NAME: ONE PARK TEN PLACE	

SHEET TITLE  
 EXISTING PLAN

SHEET NUMBER  
 EX-1



3rd FLOOR  
 KEY PLAN

**SUITE 345**  
**692 NRA**

**1 FLOOR PLAN**  
 SCALE: 1/8"=1'-0"

FLOOR PLANS MAY NOT BE TO SCALE AND MAY NOT REFLECT EXISTING CONDITIONS AND SHALL NOT BE RELIED UPON AS SUCH THESE DRAWINGS ARE DESIGN INTENT AND ARE AN EXHIBIT TO THE LEASE