

For Lease

CBRE

Move-in Ready 3rd Floor Office Space

221 South Church Street
Bowling Green, Ohio 43402

Lease Rate: \$19.00/SF



3rd Floor Office Space

221 South Church Street | Bowling Green, Ohio 43402

For Lease

Property Overview

- + Move-in ready 5,662 SF third floor available for lease
- + Full floor exclusive to tenant
- + Lease Rate: \$19.00/SF
- + Nestled in the heart of Bowling Green - surrounded by vibrant amenities, dining options, and easy access to transportation
- + Unique board room with outdoor balcony
- + Ideal office space for professional services

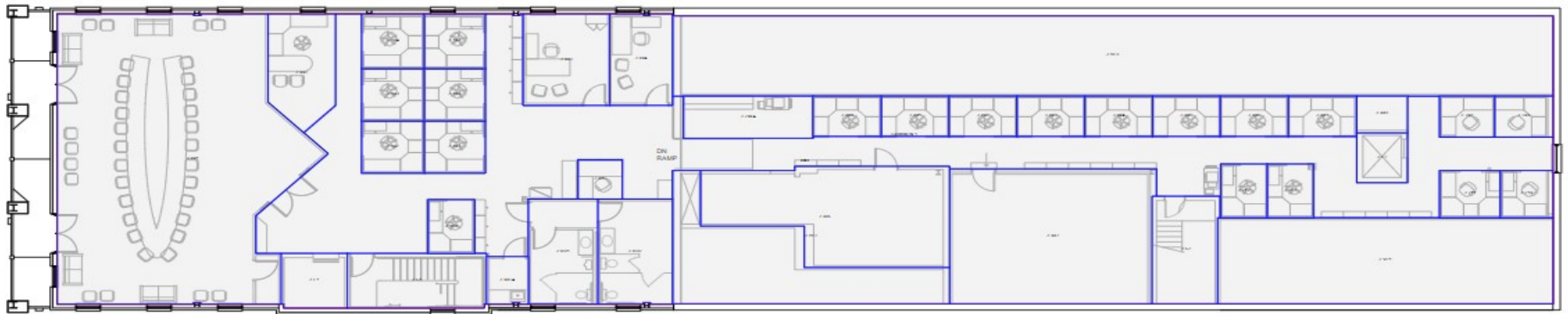
| 2024 Demographics | 1 Mile | 3 Miles | 5 Miles |
|----------------------|----------|----------|----------|
| Population | 15,841 | 31,089 | 34,058 |
| Daytime Population | 18,628 | 37,711 | 39,629 |
| Avg. HH Income | \$59,791 | \$70,304 | \$72,932 |
| Median HH Income | \$36,323 | \$47,049 | \$50,283 |
| Population 25 & Over | 6,914 | 15,736 | 17,637 |



3rd Floor Office Space

221 South Church Street | Bowling Green, Ohio 43402

Floor Plan



3rd Floor Office Space

221 South Church Street | Bowling Green, Ohio 43402

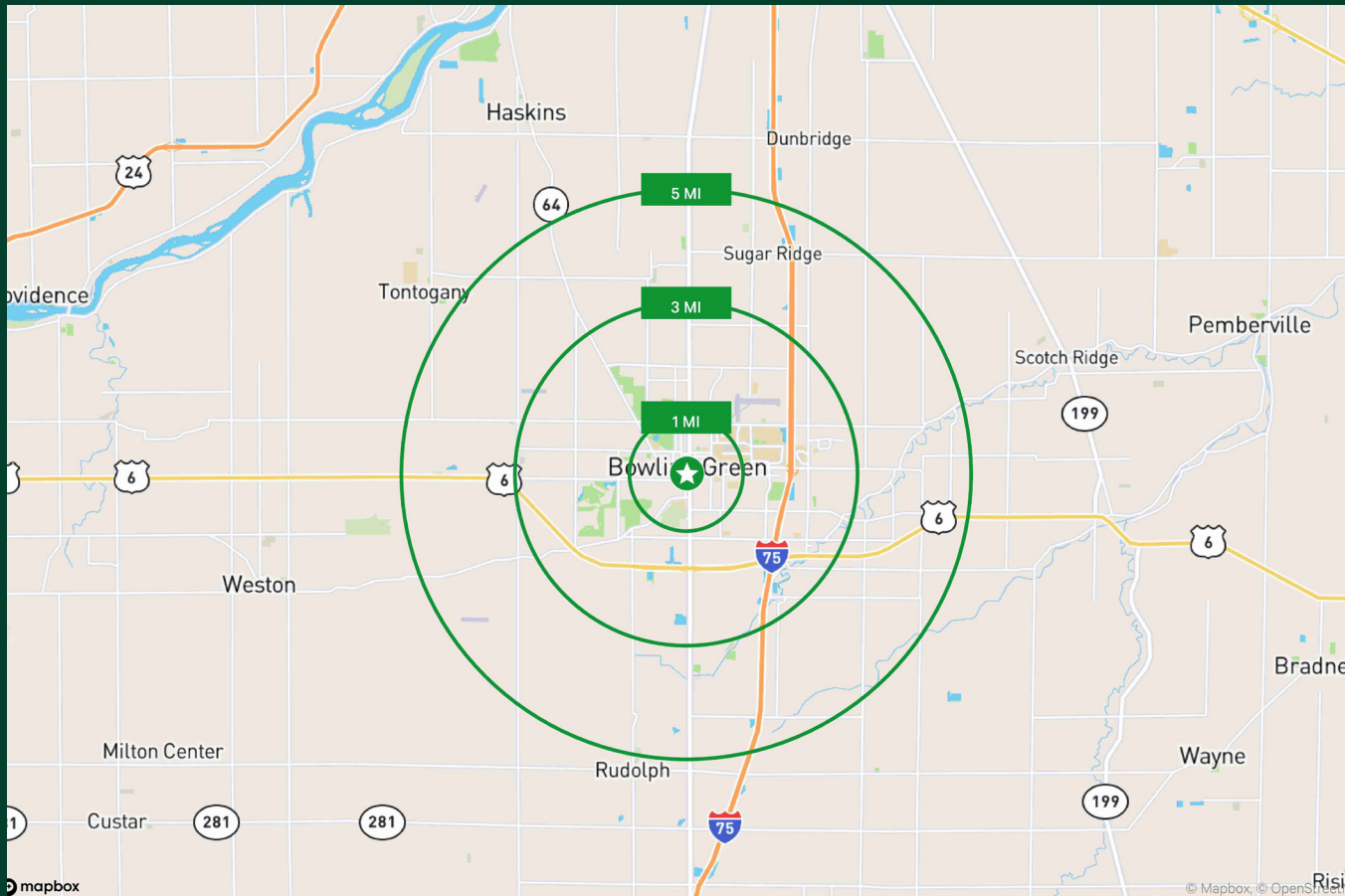
Interior Photos



3rd Floor Office Space

221 South Church Street | Bowling Green, Ohio 43402

For Lease



Contact Us

Warren Blazy

Senior Vice President
+1 330 606 5917
warren.blazy@cbre.com

Eric Smith

Senior Associate
+1 330 714 6558
eric.smith3@cbre.com

© 2024 CBRE, Inc. All rights reserved. This information has been obtained from sources believed reliable, but has not been verified for accuracy or completeness. You should conduct a careful, independent investigation of the property and verify all information. Any reliance on this information is solely at your own risk. CBRE and the CBRE logo are service marks of CBRE, Inc. All other marks displayed on this document are the property of their respective owners, and the use of such logos does not imply any affiliation with or endorsement of CBRE. Photos herein are the property of their respective owners. Use of these images without the express written consent of the owner is prohibited. Licensed Real Estate Broker.

www.cbre.com/toledo

CBRE