

FOR LEASE:
1,451 SF RETAIL SPACE



2123 Augusta Street

Suite C
(formerly Duck Donuts)

Greenville, SC 29605



PROPERTY HIGHLIGHTS:

- High end shopping center in the heart of the Augusta Road retail corridor
- Outdoor seating
- Convenient to Prisma Health and Downtown
- National Co-tenants include CAVA, Starburcks, Chipotle, Marcos Pizza, and Club Pilates
- Additional parking in rear (see site plan)
- High-density, High-income area
- 3 Mile Radius : 74,331 Residents with \$94,000 average income
- Zoned PD – City of Greenville
- \$33/SF + \$7.85/SF CAM



SIGNATURE COMMERCIAL PROPERTIES, LLC

415 W. Washington Street, Suite A
Greenville, South Carolina 29601

Ted Lyerly

864-275-7900

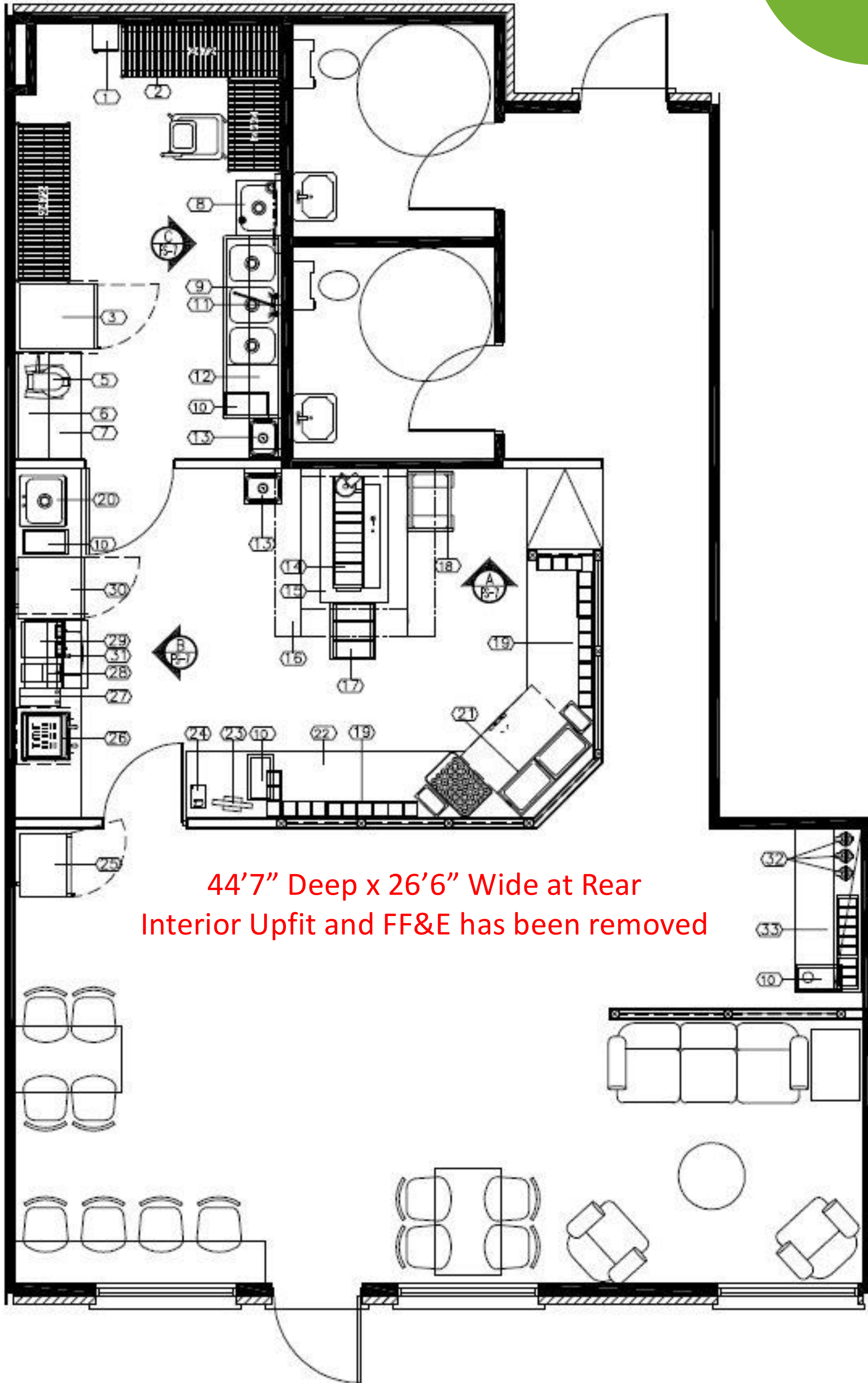
ted@lyerlycommercial.com



SIGNATURE
COMMERCIAL PROPERTIES

FLOOR PLAN

2123 Augusta Street, Suite C



SITE PLAN

2123 Augusta Street, Suite C



149 Parking Spaces Available

