

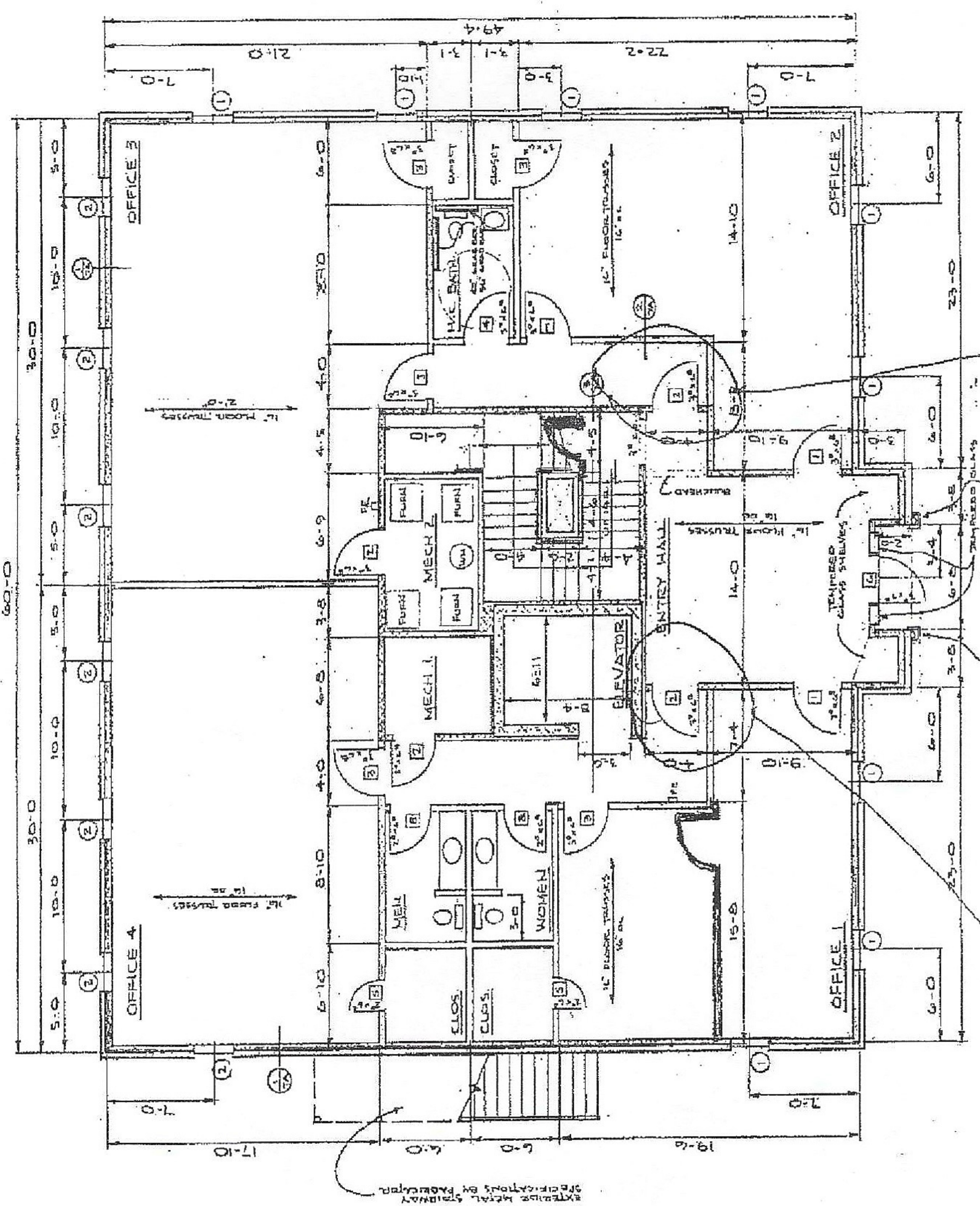
Door Schedule

Door Number	Door Size	Notes
1	3'-0" x 7'-0"	1/2" Fiberglass Insulation, 1/2" Plywood, 1/2" Gypsum Board, 1/2" Drywall
2	3'-0" x 7'-0"	1/2" Fiberglass Insulation, 1/2" Plywood, 1/2" Gypsum Board, 1/2" Drywall
3	3'-0" x 7'-0"	1/2" Fiberglass Insulation, 1/2" Plywood, 1/2" Gypsum Board, 1/2" Drywall
4	3'-0" x 7'-0"	1/2" Fiberglass Insulation, 1/2" Plywood, 1/2" Gypsum Board, 1/2" Drywall
5	3'-0" x 7'-0"	1/2" Fiberglass Insulation, 1/2" Plywood, 1/2" Gypsum Board, 1/2" Drywall
6	3'-0" x 7'-0"	1/2" Fiberglass Insulation, 1/2" Plywood, 1/2" Gypsum Board, 1/2" Drywall
7	3'-0" x 7'-0"	1/2" Fiberglass Insulation, 1/2" Plywood, 1/2" Gypsum Board, 1/2" Drywall
8	3'-0" x 7'-0"	1/2" Fiberglass Insulation, 1/2" Plywood, 1/2" Gypsum Board, 1/2" Drywall
9	3'-0" x 7'-0"	1/2" Fiberglass Insulation, 1/2" Plywood, 1/2" Gypsum Board, 1/2" Drywall
10	3'-0" x 7'-0"	1/2" Fiberglass Insulation, 1/2" Plywood, 1/2" Gypsum Board, 1/2" Drywall
11	3'-0" x 7'-0"	1/2" Fiberglass Insulation, 1/2" Plywood, 1/2" Gypsum Board, 1/2" Drywall
12	3'-0" x 7'-0"	1/2" Fiberglass Insulation, 1/2" Plywood, 1/2" Gypsum Board, 1/2" Drywall
13	3'-0" x 7'-0"	1/2" Fiberglass Insulation, 1/2" Plywood, 1/2" Gypsum Board, 1/2" Drywall
14	3'-0" x 7'-0"	1/2" Fiberglass Insulation, 1/2" Plywood, 1/2" Gypsum Board, 1/2" Drywall
15	3'-0" x 7'-0"	1/2" Fiberglass Insulation, 1/2" Plywood, 1/2" Gypsum Board, 1/2" Drywall
16	3'-0" x 7'-0"	1/2" Fiberglass Insulation, 1/2" Plywood, 1/2" Gypsum Board, 1/2" Drywall
17	3'-0" x 7'-0"	1/2" Fiberglass Insulation, 1/2" Plywood, 1/2" Gypsum Board, 1/2" Drywall
18	3'-0" x 7'-0"	1/2" Fiberglass Insulation, 1/2" Plywood, 1/2" Gypsum Board, 1/2" Drywall
19	3'-0" x 7'-0"	1/2" Fiberglass Insulation, 1/2" Plywood, 1/2" Gypsum Board, 1/2" Drywall
20	3'-0" x 7'-0"	1/2" Fiberglass Insulation, 1/2" Plywood, 1/2" Gypsum Board, 1/2" Drywall
21	3'-0" x 7'-0"	1/2" Fiberglass Insulation, 1/2" Plywood, 1/2" Gypsum Board, 1/2" Drywall
22	3'-0" x 7'-0"	1/2" Fiberglass Insulation, 1/2" Plywood, 1/2" Gypsum Board, 1/2" Drywall
23	3'-0" x 7'-0"	1/2" Fiberglass Insulation, 1/2" Plywood, 1/2" Gypsum Board, 1/2" Drywall
24	3'-0" x 7'-0"	1/2" Fiberglass Insulation, 1/2" Plywood, 1/2" Gypsum Board, 1/2" Drywall
25	3'-0" x 7'-0"	1/2" Fiberglass Insulation, 1/2" Plywood, 1/2" Gypsum Board, 1/2" Drywall
26	3'-0" x 7'-0"	1/2" Fiberglass Insulation, 1/2" Plywood, 1/2" Gypsum Board, 1/2" Drywall
27	3'-0" x 7'-0"	1/2" Fiberglass Insulation, 1/2" Plywood, 1/2" Gypsum Board, 1/2" Drywall
28	3'-0" x 7'-0"	1/2" Fiberglass Insulation, 1/2" Plywood, 1/2" Gypsum Board, 1/2" Drywall
29	3'-0" x 7'-0"	1/2" Fiberglass Insulation, 1/2" Plywood, 1/2" Gypsum Board, 1/2" Drywall
30	3'-0" x 7'-0"	1/2" Fiberglass Insulation, 1/2" Plywood, 1/2" Gypsum Board, 1/2" Drywall

All Doors to have Level Style Door Handles on the Working Side.

WALL LEGEND

- INTERIOR WALL: 2 x 4 STUDS @ 16" OC, 1/2" GYPSUM BO, EA. SIDE
- 1 HOUR RATED FIRE WALL (UL 300): 2 x 4 STUDS @ 16" OC, 1/2" GYPSUM BO, EA. SIDE, 5/8" TYPE GYPSUM BO EA. SIDE
- WALLS (MECHANICAL): 2 x 4 STUDS @ 16" OC, 1/2" GYPSUM BO, EA. SIDE, 1/2" INSULATION INSIDE, 1/2" GYPSUM BO EA. SIDE
- INTERIOR WALLS (MASONRY): 8" CONCRETE BLOCK, FINISHED OUT W/1/2" GYPSUM BO, EA. SIDE
- SIEREWALL: 2 x 4 STUDS @ 16" OC, 1/2" GYPSUM BO, EA. SIDE, 1/2" INSULATION INSIDE, 1/2" GYPSUM BO EA. SIDE
- 1 HOUR RATED FIRE WALL (UL 300): 2 x 4 STUDS @ 16" OC, 1/2" GYPSUM BO, EA. SIDE, 5/8" TYPE GYPSUM BO EA. SIDE



NOTE: F.R. FREE EXTINGUISHER.

FIRST FLOOR PLAN
SCALE: 1/4" = 1'-0"
2008 S.P.

Add Doors
2280 SATELLITE BLVD. DULUTH GA 30097