

Carolina Commons Medical Center

SPACE FOR LEASE

6237 Carolina Commons Dr & Jim Wilson Rd, Indian Land, SC 29707

Full 2nd Floor
21,113 RSF Available

Suite 320
2,308 RSF

Immediate
Availabilities

Branding
Opportunity





Carolina Commons Medical Center

6237 Carolina Commons Drive is a well-located, multi-tenant medical office building for available for lease in the growing Indian Land/Fort Mill submarket. The property offers strong healthcare tenancy, convenient patient access, and excellent visibility just off Highway 521, serving the greater South Charlotte market.

- Total Building Area: 60,000 SF
- Total Stories: 3
- Year Built: 2009
- Class: A
- Parking: 174 Spaces

Carolina Commons Medical Center

AVAILABLE FOR LEASE

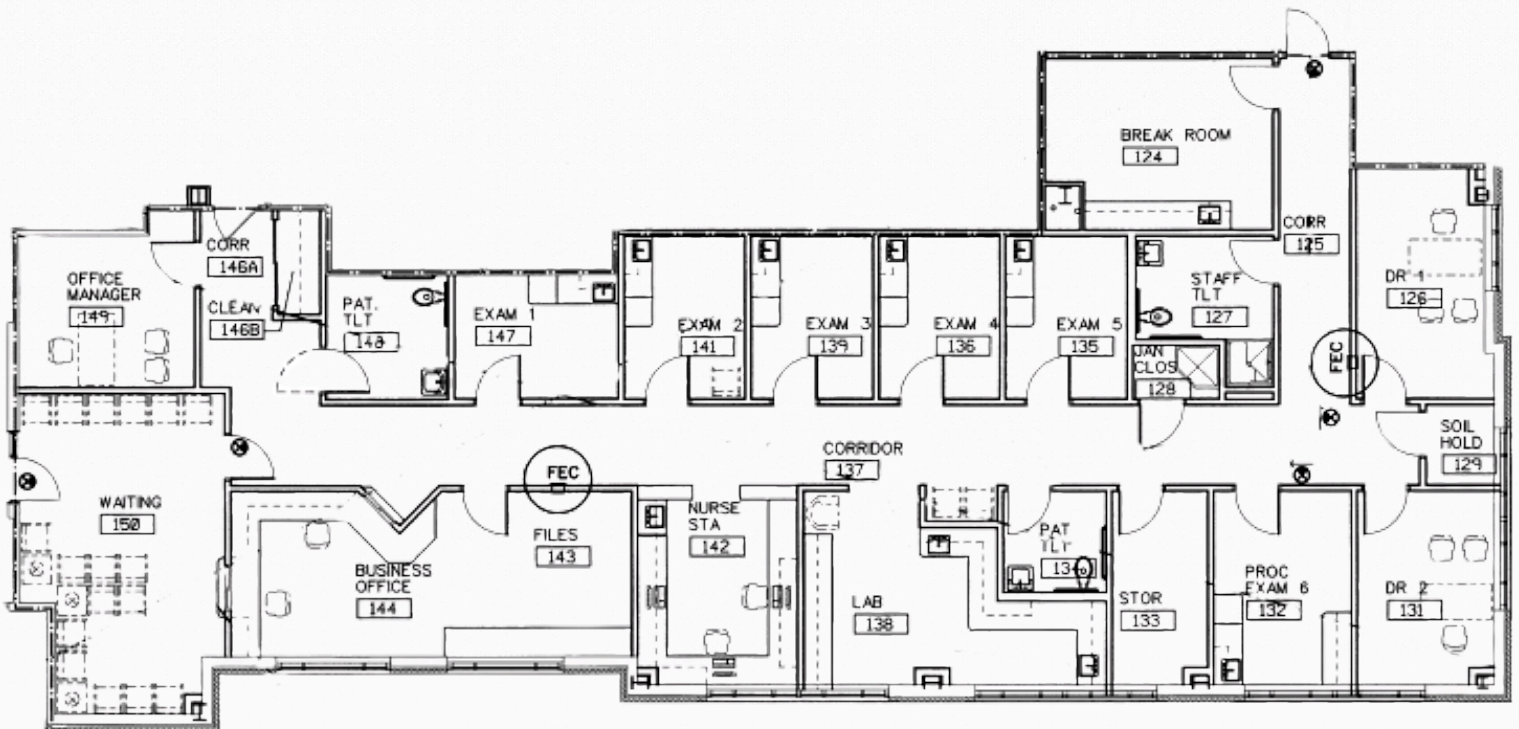
6237 Carolina Commons Dr & Jim Wilson Rd, Indian Land, SC 29707

3,898 RSF
Available

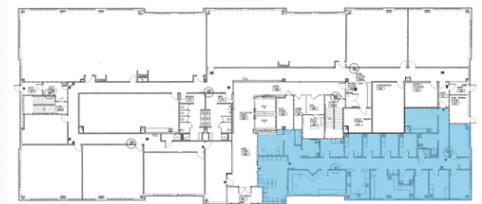
Suite
100

1st
Floor

Available
Jan 2027



1ST FLOOR PLAN



Carolina Commons Medical Center

AVAILABLE FOR LEASE

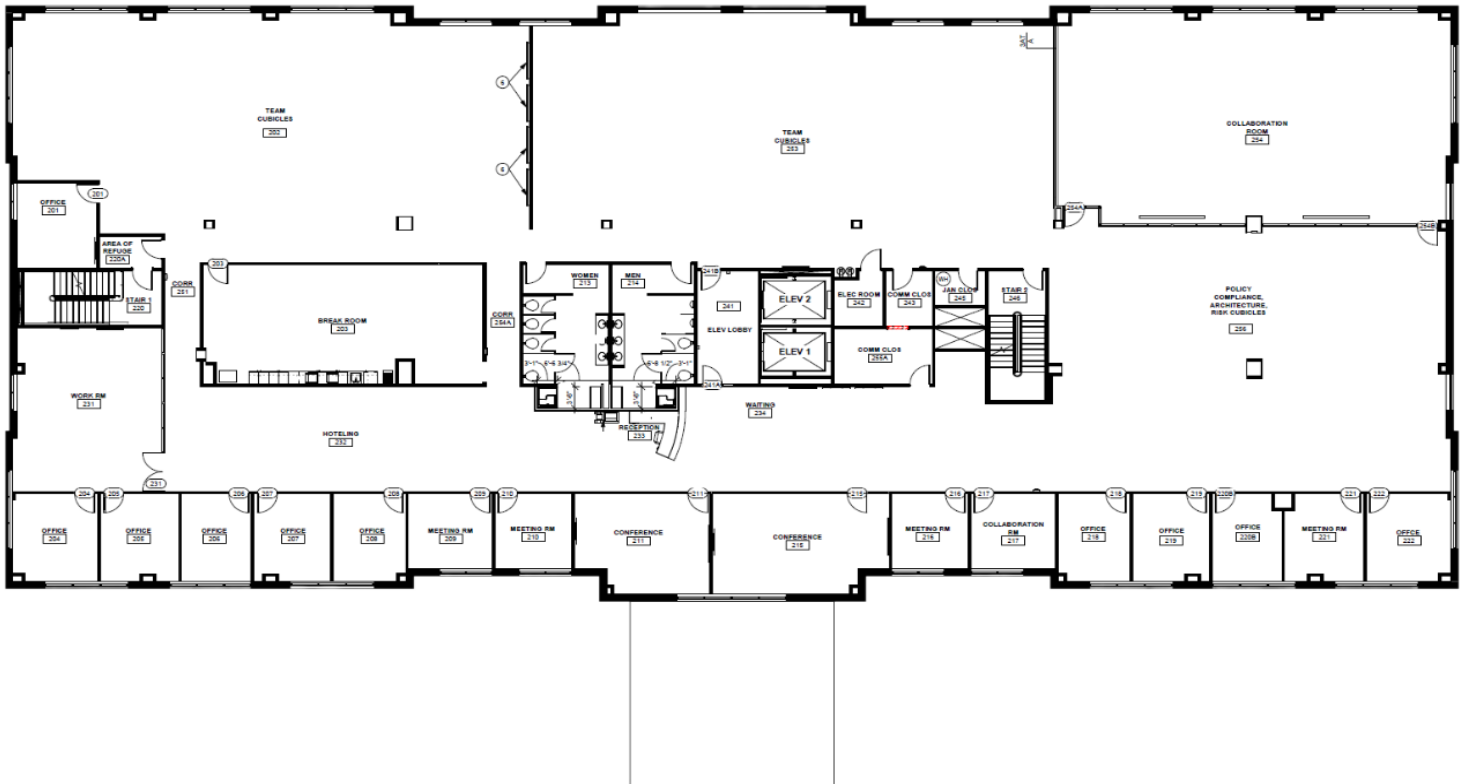
6237 Carolina Commons Dr & Jim Wilson Rd, Indian Land, SC 29707

21,113 RSF
Available

2nd
Generation

Full 2nd
Floor

Immidiate
Availability



Carolina Commons Medical Center

AVAILABLE FOR LEASE

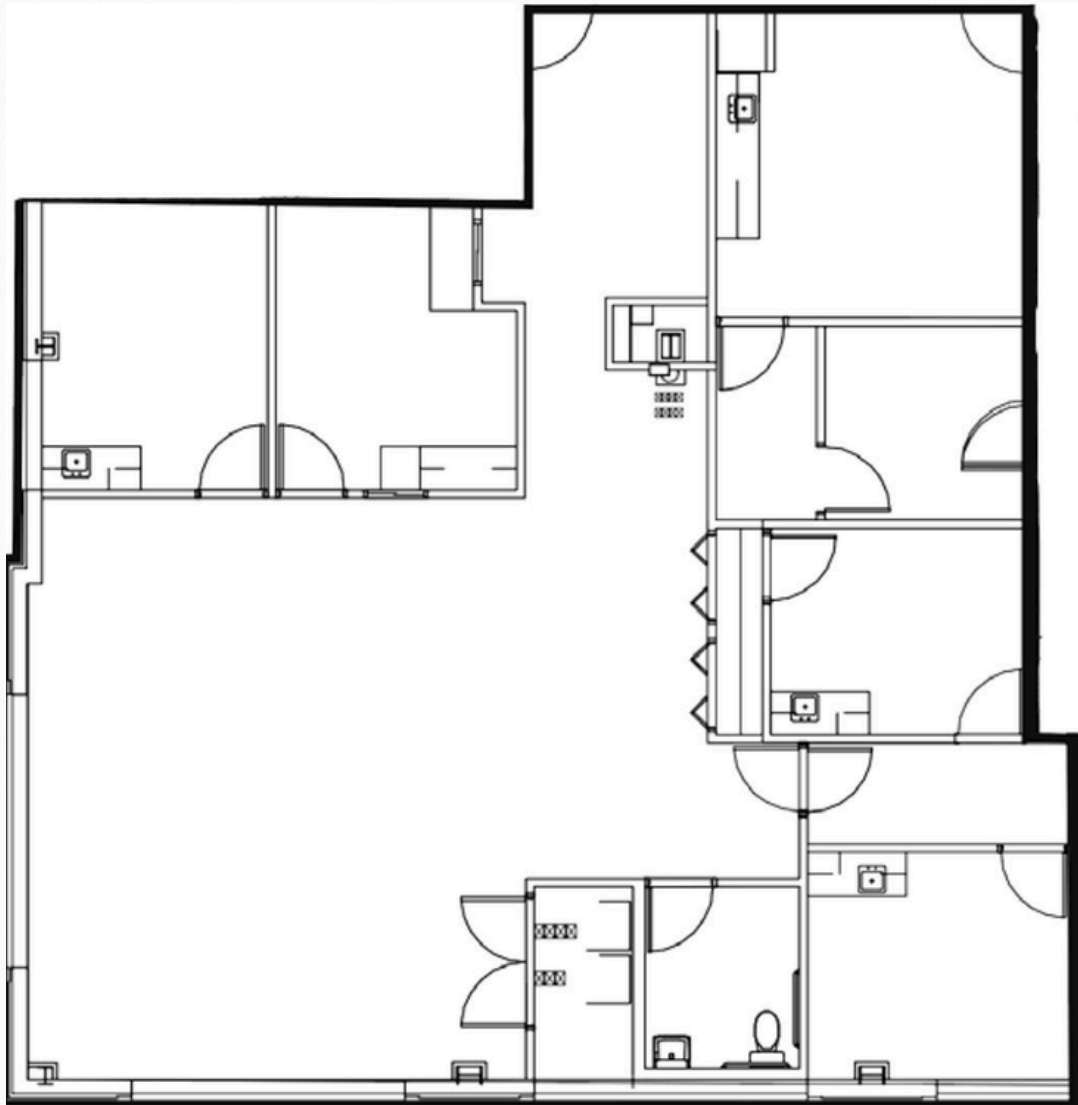
6237 Carolina Commons Dr & Jim Wilson Rd, Indian Land, SC 29707

2,308 RSF
Available

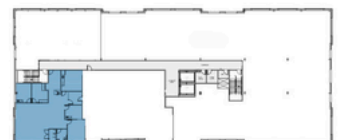
Suite
320

3rd
Floor

Available
Jan 2027



3rd FLOOR PLAN





Carolina Commons Medical Center

Carolina Commons Medical Center offers a purpose-built medical office environment with established healthcare co-tenancy and a strong daily patient draw.

PROPERTY OVERVIEW

- Three story, Class A, multi-tenant medical office building
- Branding Opportunities
- Excellent Opportunity to access a large patient base in the Lancaster/Fort Mill/South Charlotte
- Adjacent to highly successful Sun City Carolina Lakes – an active adult community, and across the street from Atrium-Carolina Lakes Medical Plaza.
- Co-tenants include OrthoCarolina, Novant Indian Land Primary Care, and Metrolina Eye Associates.

BUILDING FEATURES

Designed for patient convenience and provider visibility, the building features a covered drop-off, ample surface parking, and branding opportunities.



PORTE COCHERE

Features a porte cochere for patient drop-off, ample parking, and monument signage opportunities.



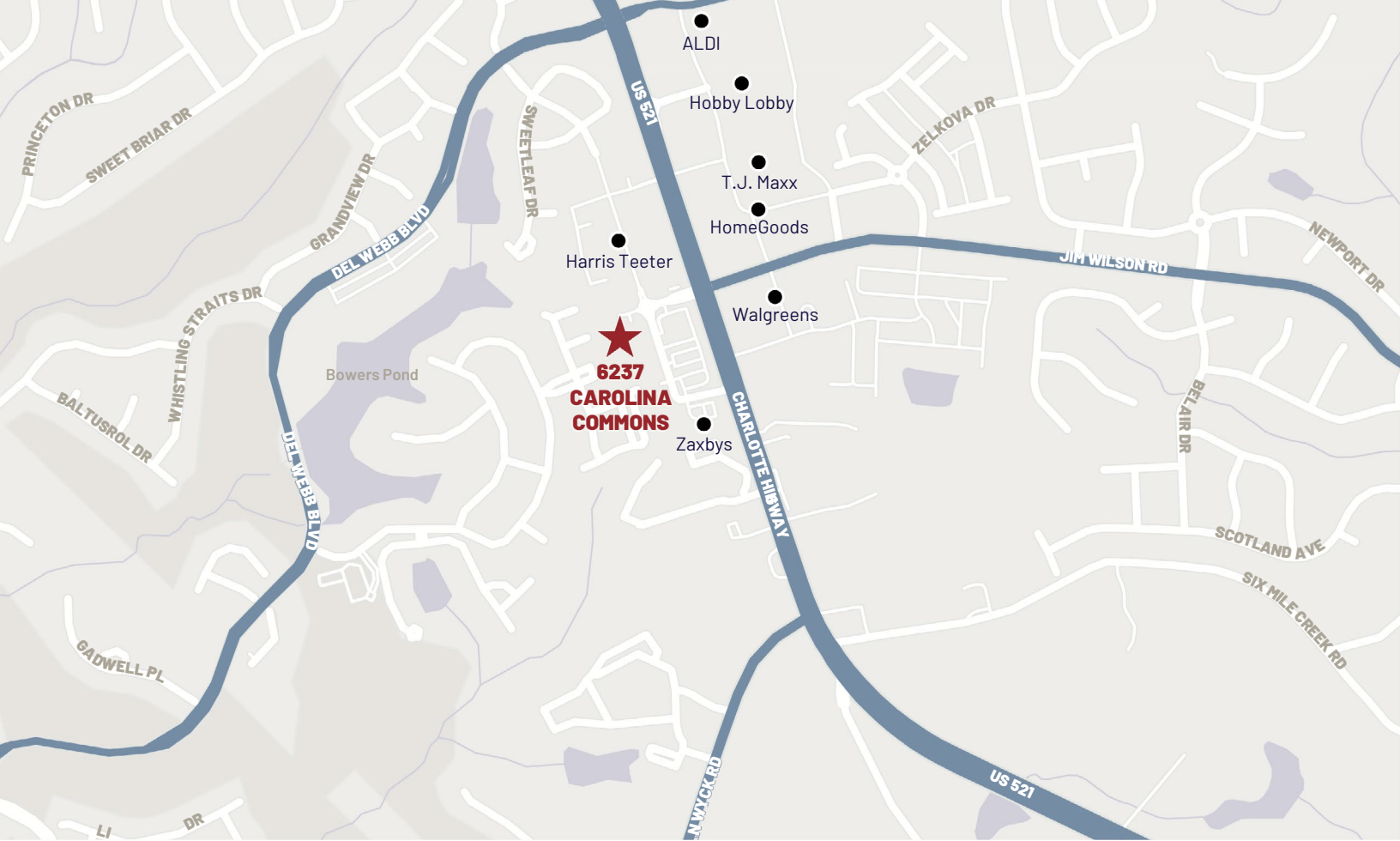
SURFACE PARKING

The property offers 174 surface parking spaces, providing convenient access for both patients and staff.



ACCESSIBILITY

The building is wheelchair accessible and designed to support patient circulation throughout.



Carolina Commons Medical Center

6237 Carolina Commons Dr & Jim Wilson Rd, Indian Land, SC 29707



Property Location

Carolina Commons Medical Center is located within a well-established mixed-use corridor supported by nearby retail, medical services, and residential communities. The surrounding area benefits from steady daily activity and a built-in population base that supports ongoing medical and professional use.



 Transwestern

John V. Lopez, CCIM RPA
Managing Director,
Healthcare Advisory Services
(404)-842-6562
john.lopez@transwestern.com

Steve Hall
Senior Managing Director,
Healthcare Advisory Services
(404)-842-6560
steve.hall@transwestern.com