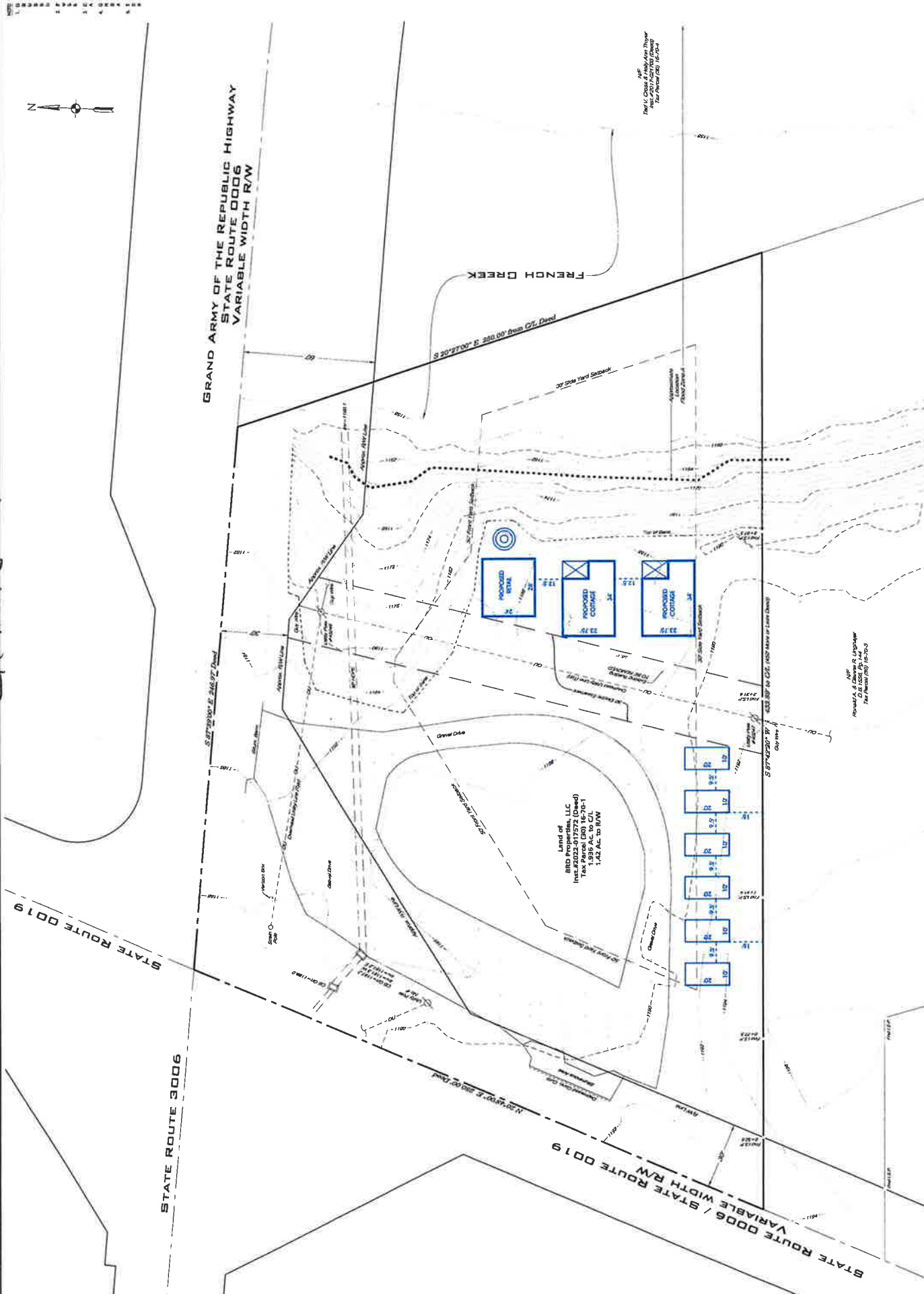


Exhibit 4



**EXISTING CONDITIONS PLAN**  
FOR  
**ROBIN YAPLE**  
LEBOEUF TOWNSHIP, ERIE COUNTY, PENNSYLVANIA

---

**SANFORD**  
SURVEYING & ENGINEERING, P.C.  
471 ATLANTIC AVENUE, 2ND FLOOR  
ROSELAND, PENNSYLVANIA 16242

---

NO.	DATE	BY	SCALE	PROJECT	DATE	PROJECT	PROJECT
1	11/15/23	RY	AS SHOWN	EXISTING CONDITIONS PLAN	11/15/23	16242	16242
2							
3							

DRAWN BY: ROBIN YAPLE, L.S. 0100    CHECKED BY: ROBIN YAPLE, L.S. 0100    DATE: 11/15/23