

Office Space **AVAILABLE** FOR LEASE

1700
K Street
Suite 220
Bakersfield, CA

Property Features

- Located in the heart of Downtown Bakersfield
- Close to Kern County Superior Courthouse and many other government facilities
- 2,842 SF available on second floor
- Secured second level parking garage attached to building
- \$1.95 PSF/Month INCLUDING utilities and excluding janitorial services to the premises
- Possible monument signage available



The information contained herein may have been obtained from sources other than ASU Commercial. We have not verified such information and make no guarantees, warranties or representations about such information. It is your responsibility to independently confirm its accuracy and completeness prior to purchasing/leasing the property.



Jacob R. Shaw ▪ Associate ▪ 661 616 3571 ▪ jake@asuassociates.com ▪ CA RE #02283738
Matthew E. Starr, SIOR, CCIM ▪ Principal ▪ 661 616 3570 ▪ matthew@asuassociates.com ▪ CA RE #01367855
11601 Bolthouse Drive Suite 110 ▪ Bakersfield, CA 93311 ▪ 661 862 5454 main ▪ 661 862 5444 fax

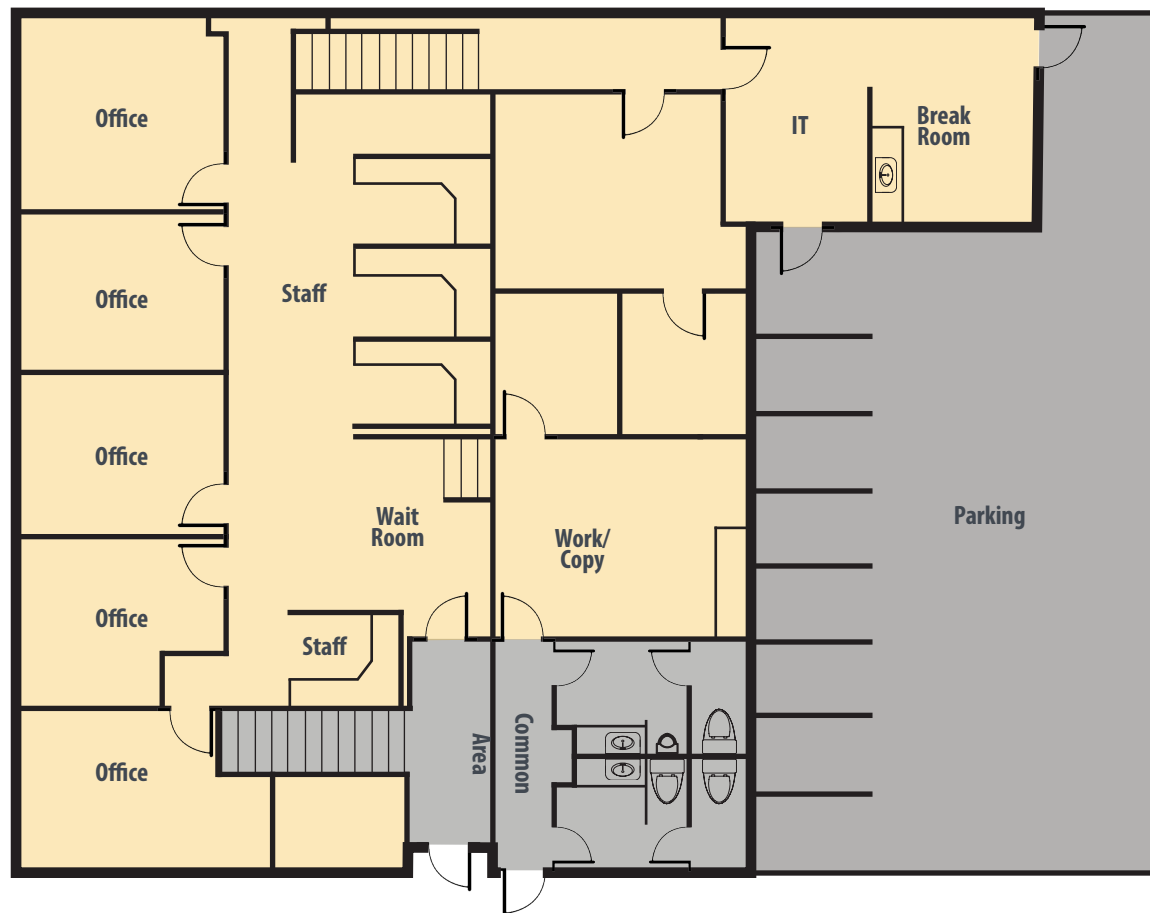
Office Space Available For Lease

Floor Plan

1700 K Street - Suite 220 - Bakersfield, CA



Suite 220
2,842 SF



**Plans deemed to be accurate, but not guaranteed. Plan not to scale.*



Office Space Available For Lease

Property Photos

1700 K Street - Suite 220 - Bakersfield, CA



Office Space Available For Lease

Area Rooftop Aerial

1700 K Street - Suite 220 - Bakersfield, CA



1700 K Street



Jacob R. Shaw - Associate - 661 616 3571 - jake@asuassociates.com - CA RE #02283738
Matthew E. Starr, SIOR, CCIM - Principal - 661 616 3570 - matthew@asuassociates.com - CA RE #01367855
11601 Bolthouse Drive Suite 110 - Bakersfield, CA 93311 - 661 862 5454 main - 661 862 5444 fax

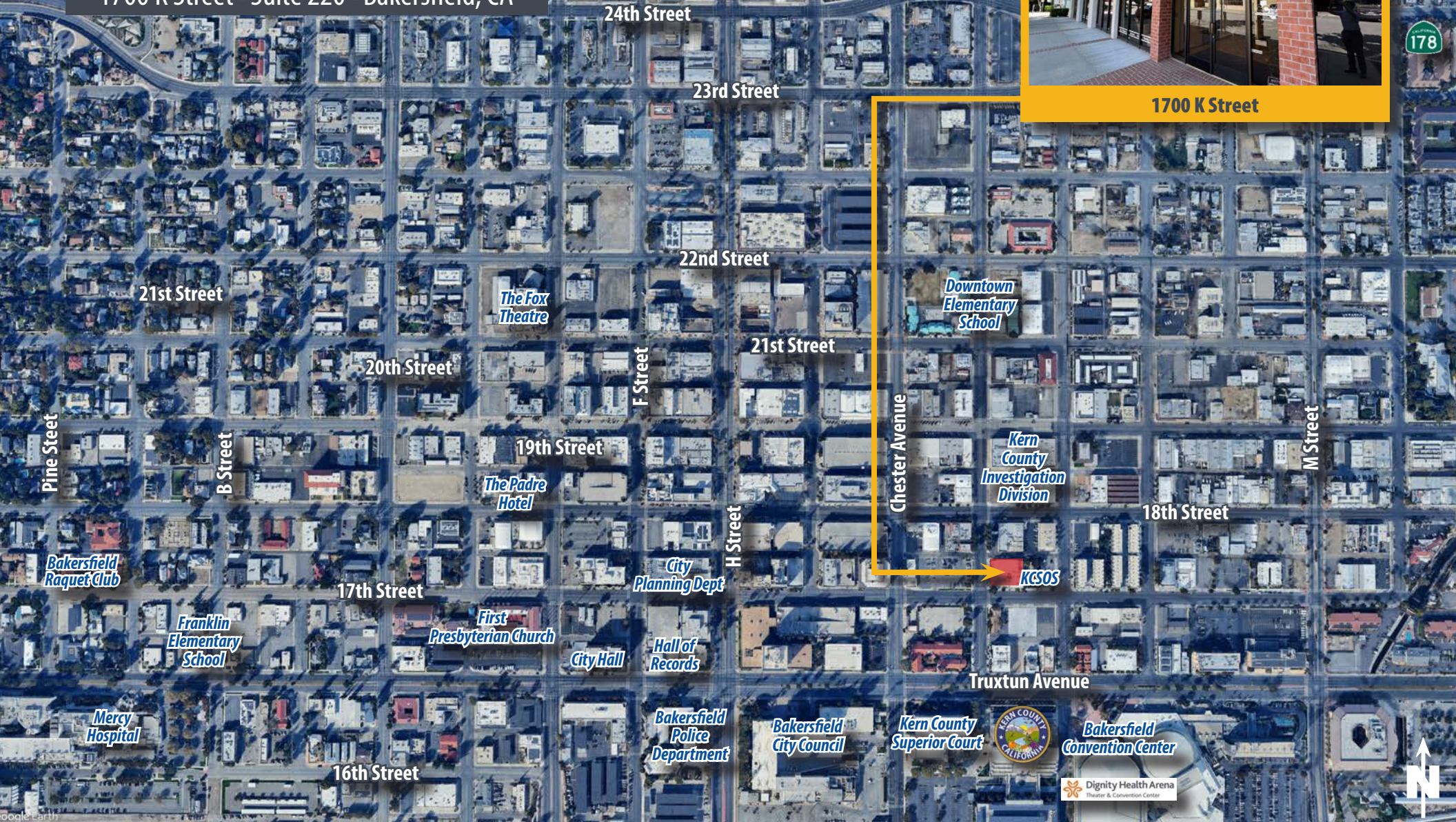
Office Space Available For Lease

Aerial of Downtown Area Submarket

1700 K Street - Suite 220 - Bakersfield, CA



1700 K Street



Jacob R. Shaw - Associate - 661 616 3571 - jake@asuassociates.com - CA RE #02283738
 Matthew E. Starr, SIOR, CCIM - Principal - 661 616 3570 - matthew@asuassociates.com - CA RE #01367855
 11601 Bolthouse Drive Suite 110 - Bakersfield, CA 93311 - 661 862 5454 main - 661 862 5444 fax

