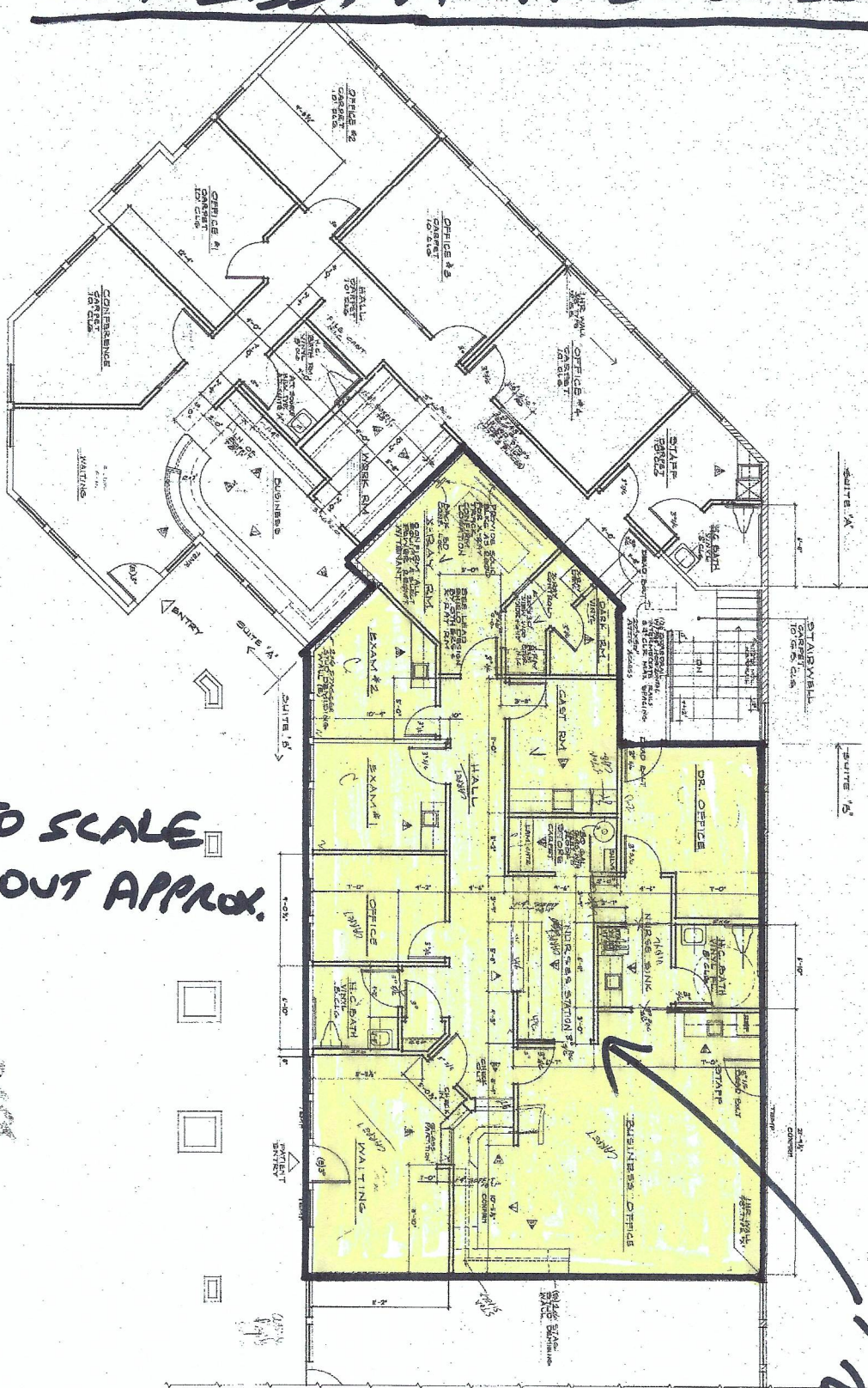


EXHIBIT A - PREMISES



* NOT TO SCALE
 * BUILD-OUT APPROX.

BSS
 AS BUILT

17

SUITE A
 2000
 TENANT

PRELIMINARY
 SUBJECT TO APPROVAL

TENANT IMPROVEMENT PLANS for
 SUITE 'A' - FINANCIAL NETWORK
 SUITE 'B' - DR. HELMUTH JONES
 6127 CLARK RD. PARADISE, CA.

Bryne & Hawkins

Clark, Blvd. Suite 200
 6127 Clark Rd.
 Paradise, CA 95969
 Architects & Planners
 6127 Clark Rd.
 Paradise, CA 95969