

INDUSTRIAL, FLEX & CREATIVE OFFICE

**FOR LEASE**

2,711 - 31,896 SF



**METRIC  
COLLECTIVE**



OWNED BY:

**MIG**<sup>®</sup>  
Real Estate

LEASED BY:

**LA**  
LEE & ASSOCIATES



## 550,000 SF CREATIVE OPPORTUNITY

Metric Collective, formerly known as The Offices at Braker, is a 550,000 SF flex/industrial and creative office campus located in North Austin's flex/industrial submarket. The 13-building campus is within a mile (2-minute drive time) of the Domain, Austin's premier mixed-use development, and has access to over a hundred retailers, six hotels, and dozens of restaurants. With close proximity and accessibility to Mopac (Loop 1), Research Boulevard (Highway 183), Capital of Texas Highway (Loop 360) and Interstate 35, this coveted submarket is Austin's largest with 11-million SF and boasts the strongest demand by its 95.4% occupancy.

# BUILDINGS MAP



# CURRENT AVAILABILITIES



## BUILDINGS A - I

### BUILDING A

SUITE D\*: 4,493 SF

SUITE E\*: 2,717 SF

SUITE G\*: 2,711 SF

\*CONTIGUOUS: 9,921 SF

SUITE H\*: 5,400 SF

SUITE L\*: 3,606 SF

\*CONTIGUOUS: 9,006 SF

SUITE N: 5,852 SF

### BUILDING B

SUITE 100\*: 11,500 SF

SUITE 200\*: 14,547 SF

\*CONTIGUOUS: 26,047 SF

SUITE 300: 21,853 SF

### BUILDING D

100% LEASED

### BUILDING E

SUITE 200: 14,613 SF

### BUILDING F

SUITE 100\*: 11,342 SF

SUITE 200\*: 12,775 SF

\*CONTIGUOUS: 24,117 SF

### BUILDING G

SUITE 200: 15,550 SF

### BUILDING I

100% LEASED

### BUILDING J

SUITE 100: 31,896 SF

## BUILDINGS M1-M4

### BUILDING M1

SUITE 150\*: 18,322 SF

SUITE 190\*: 6,302 SF

\*CONTIGUOUS: 24,624 SF

### BUILDING M2

SUITE 210: 6,992 SF

SUITE 280: 4,330 SF

### BUILDING M3

SUITE 310: 5,000 SF

### BUILDING M4

100% LEASED

## BUILDING 1

### BUILDING 1

SUITE 150\*: 6,003 SF

SUITE 250\*: 6,946 SF

\*CONTIGUOUS: 12,949 SF

SUITE 550: 10,434 SF

SUITE 750: 5,181 SF

**MITCHELL BECKER**

512.410.8265

mbecker@lee-associates.com

**WILL SALLIS**

512.410.8269

wsallis@lee-associates.com

 **LEE &  
ASSOCIATES**  
COMMERCIAL REAL ESTATE SERVICES

# BUILDING A

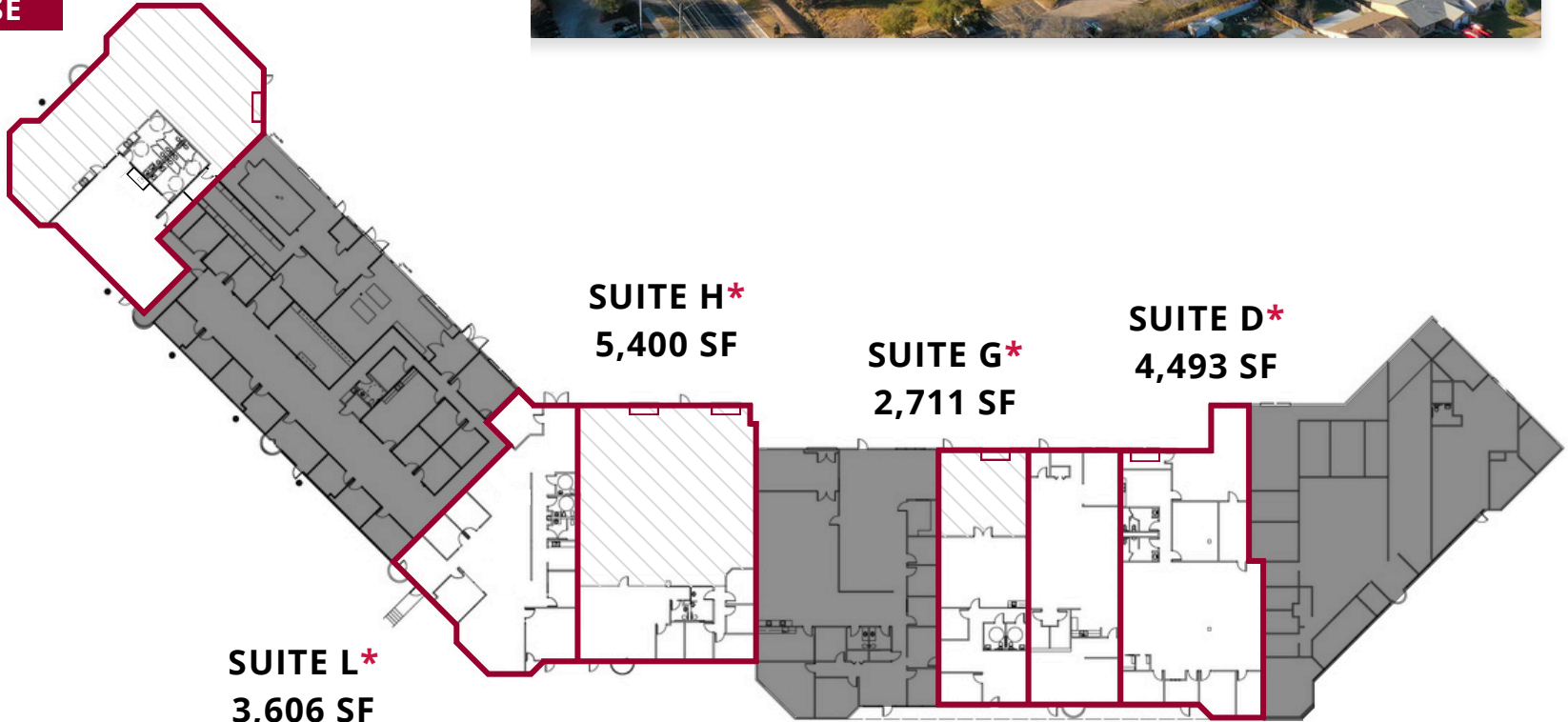
1826 KRAMER LN

AVAILABLE: 2,711 - 9,921 SF



 WAREHOUSE

SUITE N  
5,852 SF



SUITE H\*  
5,400 SF

SUITE G\*  
2,711 SF

SUITE D\*  
4,493 SF

SUITE L\*  
3,606 SF

SUITE E\*  
2,717 SF

\*SUITES L & H CAN BE COMBINED FOR 9,006 SF

\*SUITES G, E, & D CAN BE COMBINED FOR 9,921 SF

**MITCHELL BECKER**

512.410.8265

mbecker@lee-associates.com

**WILL SALLIS**

512.410.8269

wsallis@lee-associates.com

 **LEE &  
ASSOCIATES**

COMMERCIAL REAL ESTATE SERVICES

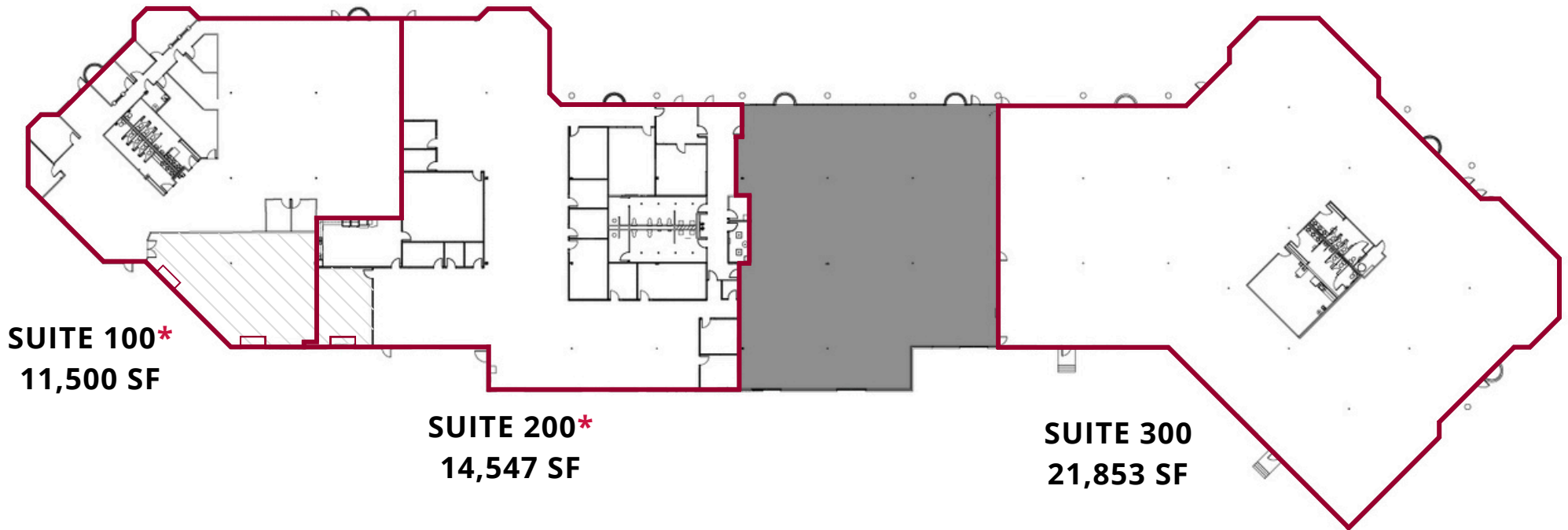
# BUILDING B

1908 KRAMER LN

AVAILABLE: 11,500 - 26,047 SF



 WAREHOUSE



**\*SUITES 100 & 200 CAN BE COMBINED FOR 26,047 SF**

**MITCHELL BECKER**

512.410.8265

mbecker@lee-associates.com

**WILL SALLIS**

512.410.8269

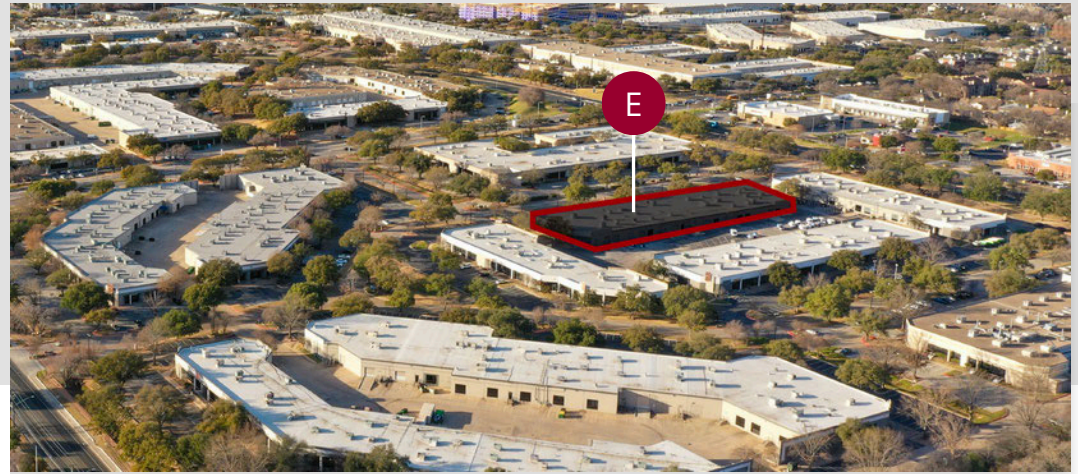
wsallis@lee-associates.com

 **LEE &  
ASSOCIATES**  
COMMERCIAL REAL ESTATE SERVICES

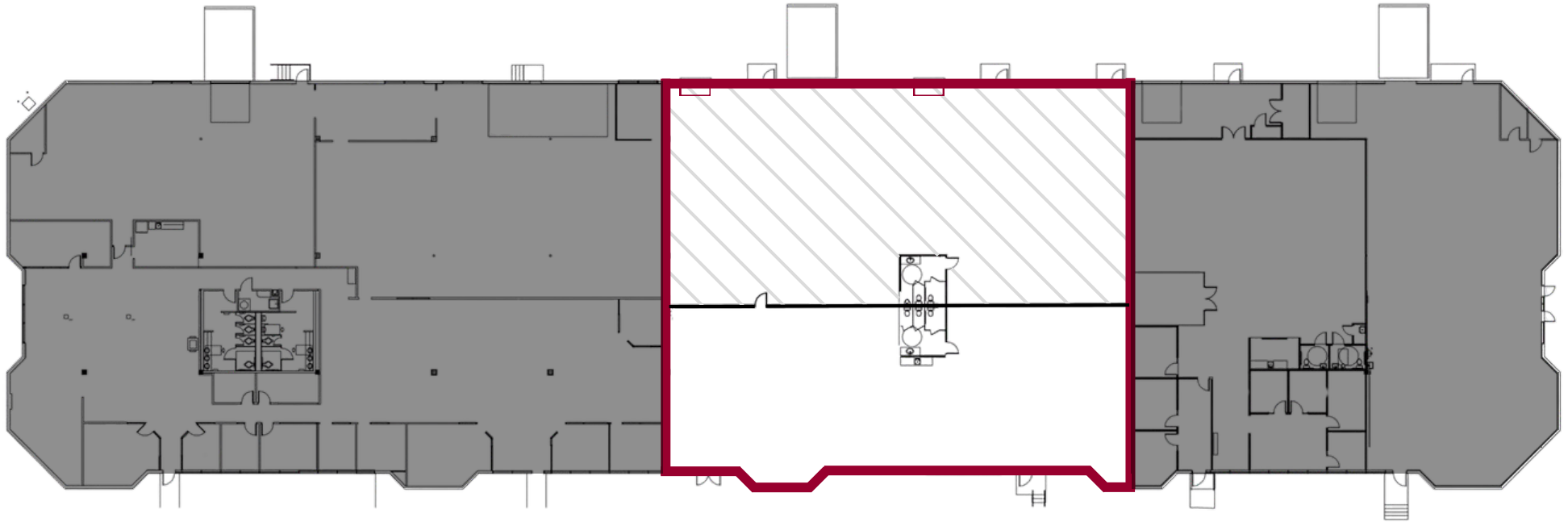
# BUILDING E

1909 W. BRAKER LN

AVAILABLE: 14,613 SF



 WAREHOUSE



**SUITE 200**  
**14,613 SF**

**MITCHELL BECKER**

512.410.8265

mbecker@lee-associates.com

**WILL SALLIS**

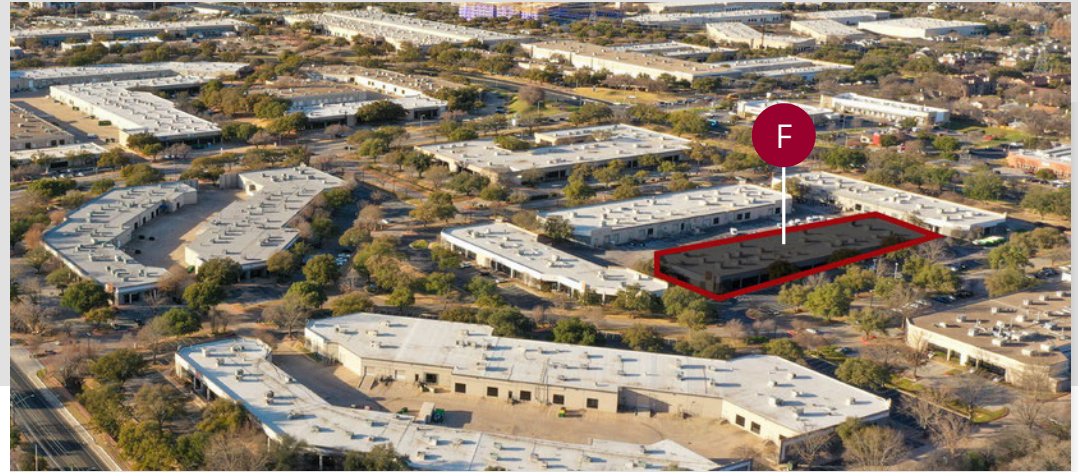
512.410.8269

wsallis@lee-associates.com

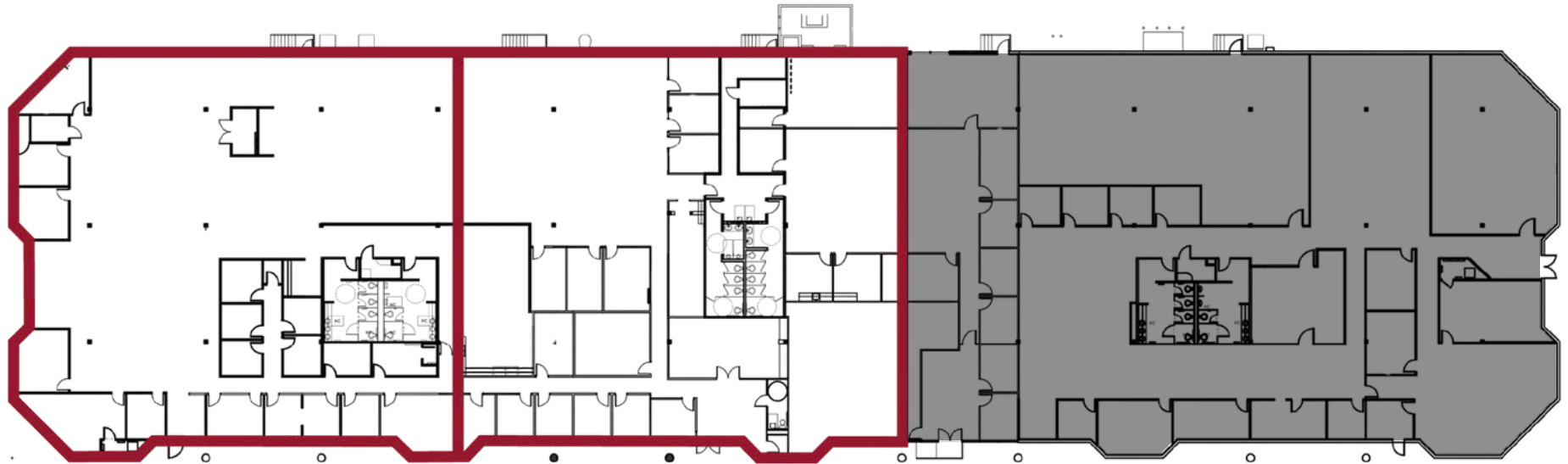
# BUILDING F

1817 W. BRAKER LN

AVAILABLE: 11,342 - 24,117 SF



 WAREHOUSE



**SUITE 100\***  
11,342 SF

**SUITE 200\***  
12,775 SF

**\*SUITES 100 & 200 CAN BE COMBINED FOR 24,117 SF**

**MITCHELL BECKER**

512.410.8265

mbecker@lee-associates.com

**WILL SALLIS**

512.410.8269

wsallis@lee-associates.com

 **LEE &  
ASSOCIATES**

COMMERCIAL REAL ESTATE SERVICES

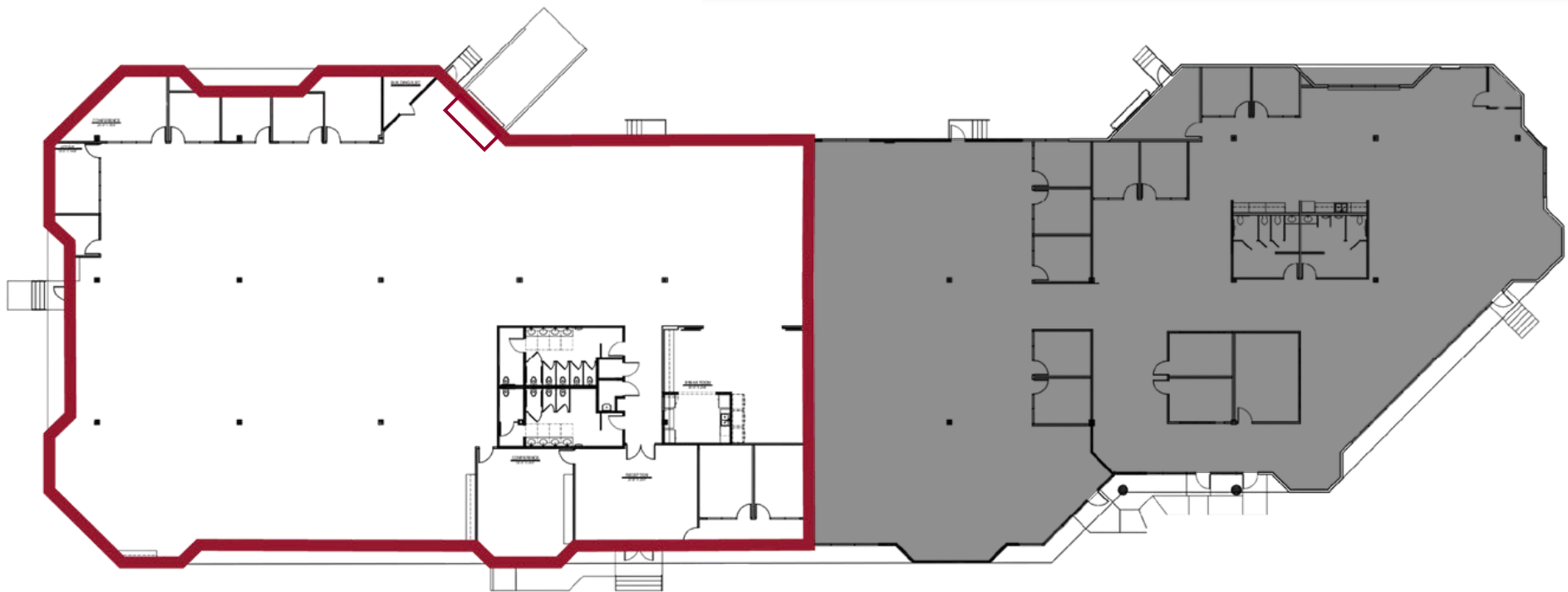
# BUILDING G

11109 METRIC BLVD

AVAILABLE: 15,550 SF



 WAREHOUSE



**SUITE 200**  
**15,550 SF**

**MITCHELL BECKER**

512.410.8265

mbecker@lee-associates.com

**WILL SALLIS**

512.410.8269

wsallis@lee-associates.com

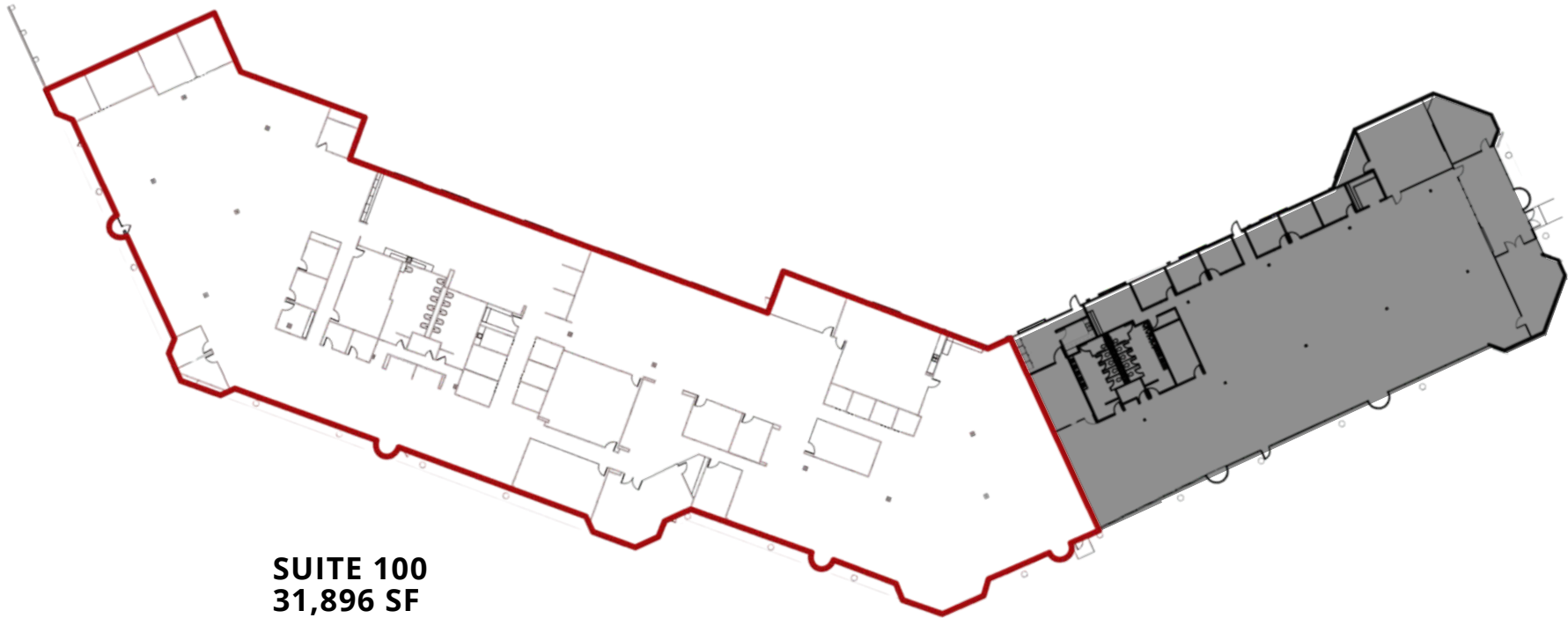
# BUILDING J

11009 METRIC BLVD

AVAILABLE: 31,896 SF



 WAREHOUSE



**SUITE 100**  
**31,896 SF**

**MITCHELL BECKER**

512.410.8265

mbecker@lee-associates.com

**WILL SALLIS**

512.410.8269

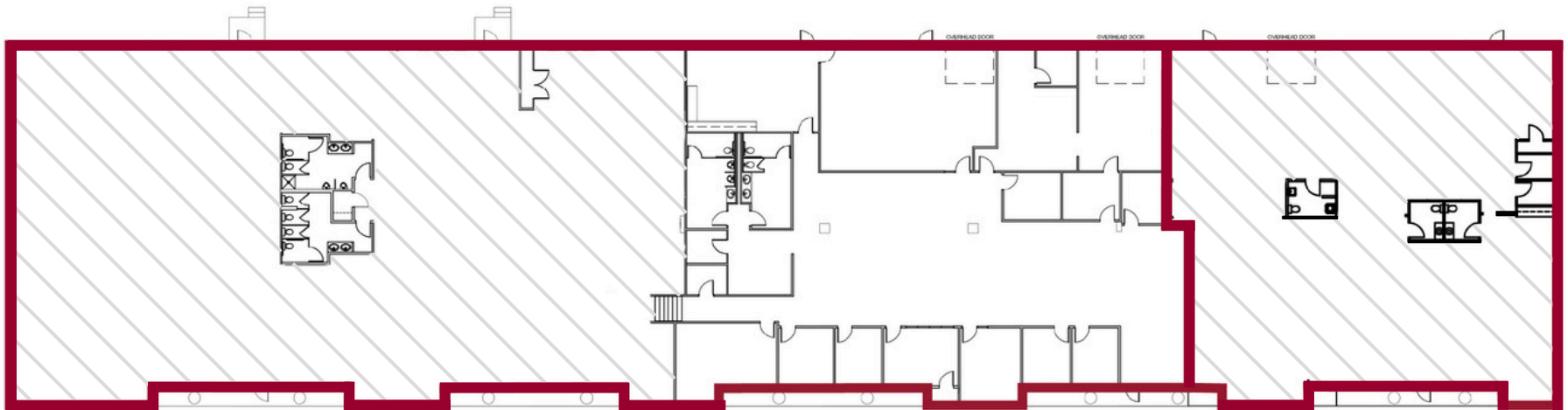
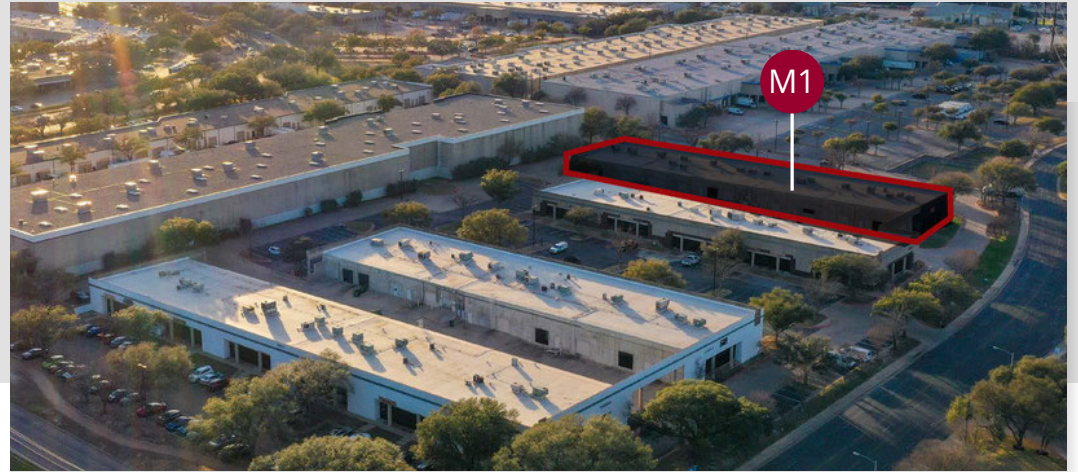
wsallis@lee-associates.com

# BUILDING M1

11500-1 METRIC BLVD

AVAILABLE: 6,302 - 24,624 SF

 WAREHOUSE



**SUITE 150\***  
18,322 SF

**SUITE 190\***  
6,302 SF

**\*SUITES 150 & 190 CAN BE COMBINED FOR 24,624 SF**

**MITCHELL BECKER**  
512.410.8265  
mbecker@lee-associates.com

**WILL SALLIS**  
512.410.8269  
wsallis@lee-associates.com

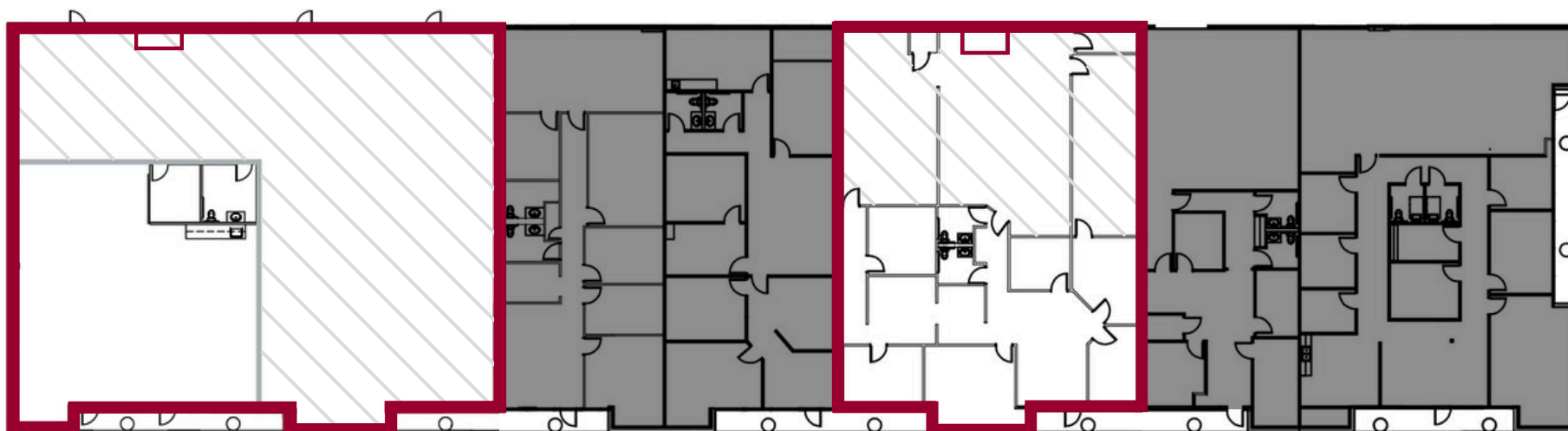
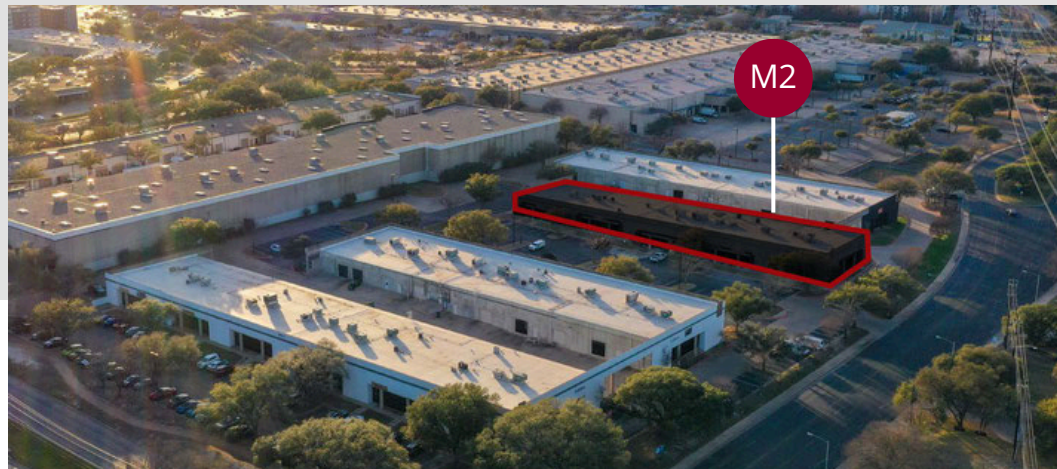
 **LEE & ASSOCIATES**  
COMMERCIAL REAL ESTATE SERVICES

# BUILDING M2

11500-2 METRIC BLVD

AVAILABLE: 4,330 - 6,992 SF

 WAREHOUSE



**SUITE 210**  
6,992 SF

**SUITE 280**  
4,330 SF

**MITCHELL BECKER**

512.410.8265

mbecker@lee-associates.com

**WILL SALLIS**

512.410.8269

wsallis@lee-associates.com

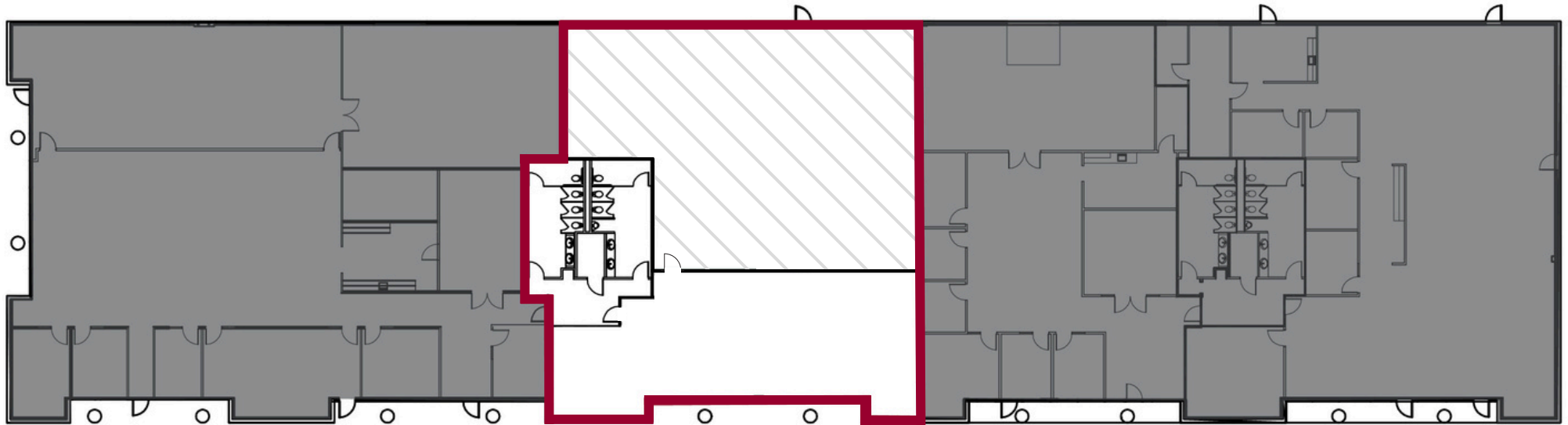
# BUILDING M3

11500-3 METRIC BLVD

AVAILABLE: 5,000 SF



WAREHOUSE



SUITE 310  
5,000 SF

**MITCHELL BECKER**

512.410.8265

mbecker@lee-associates.com

**WILL SALLIS**

512.410.8269

wsallis@lee-associates.com

# BUILDING 1

2100 KRAMER LN

AVAILABLE: 5,181 - 12,949 SF



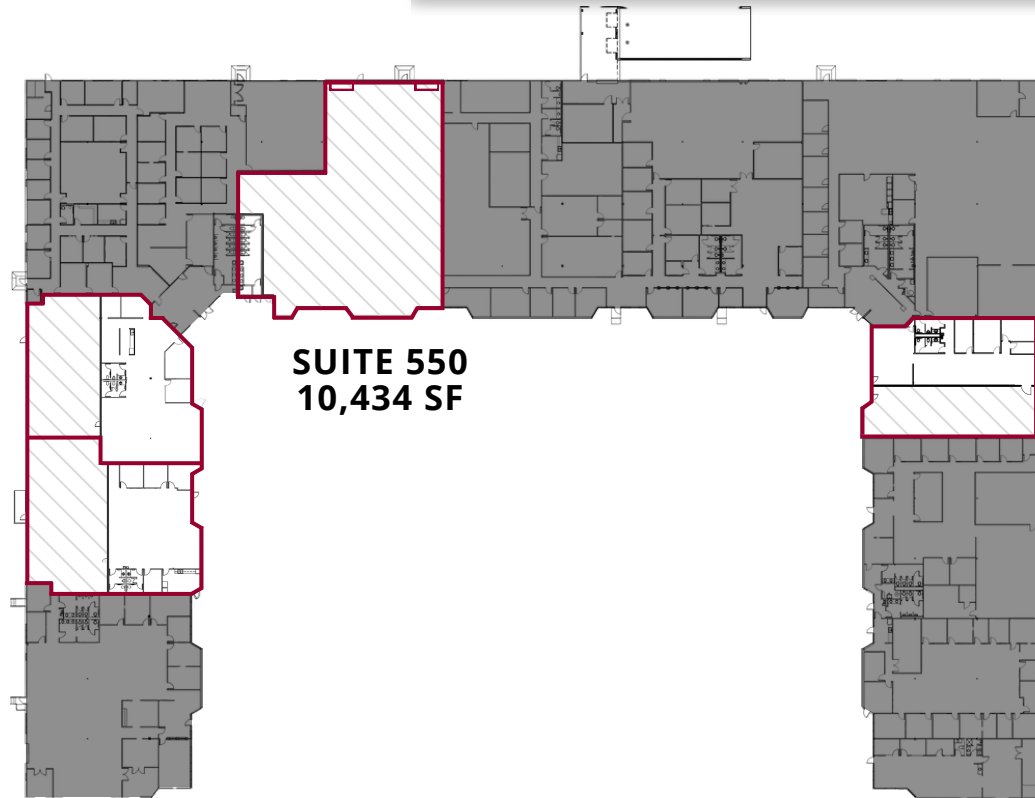
 WAREHOUSE

**SUITE 250\***  
6,946 SF

**SUITE 150\***  
6,003 SF

**SUITE 550**  
10,434 SF

**SUITE 750**  
5,181 SF



**\*SUITES 150 & 250 CAN BE COMBINED FOR 12,949 SF**

**MITCHELL BECKER**

512.410.8265

mbecker@lee-associates.com

**WILL SALLIS**

512.410.8269

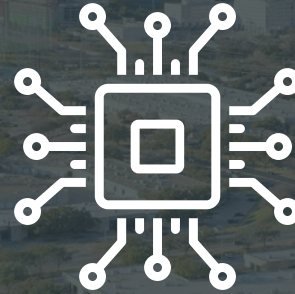
wsallis@lee-associates.com

 **LEE &  
ASSOCIATES**  
COMMERCIAL REAL ESTATE SERVICES

# DRIVE TIMES



**15 MIN**  
TO DOWNTOWN



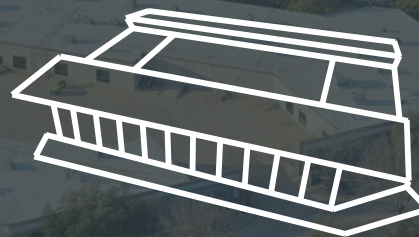
**33 MIN**  
TO SAMSUNG



**25 MIN**  
TO TESLA GIGAFACTORY



**20 MIN**  
TO THE AIRPORT



**4 MIN**  
TO Q2 STADIUM



**2 MIN**  
TO THE DOMAIN

# CONTACT US

**MITCHELL BECKER**  
512.410.8265  
[mbecker@lee-associates.com](mailto:mbecker@lee-associates.com)

**WILL SALLIS**  
512.410.8269  
[wsallis@lee-associates.com](mailto:wsallis@lee-associates.com)



**LEE &  
ASSOCIATES**

COMMERCIAL REAL ESTATE SERVICES