



For Lease

John Carpin

Senior Vice President
+1 804 267 7216
john.carpin@colliers.com

Malcolm Randolph, SIOR

Senior Vice President
+1 804 267 7208
malcolm.randolph@colliers.com

Jimmy Martin, SIOR

Senior Vice President
+1 804 267 7218
jimmy.martin@colliers.com

Catherine Walker

Vice President
+1 804 968 1978
catherine.walker@colliers.com

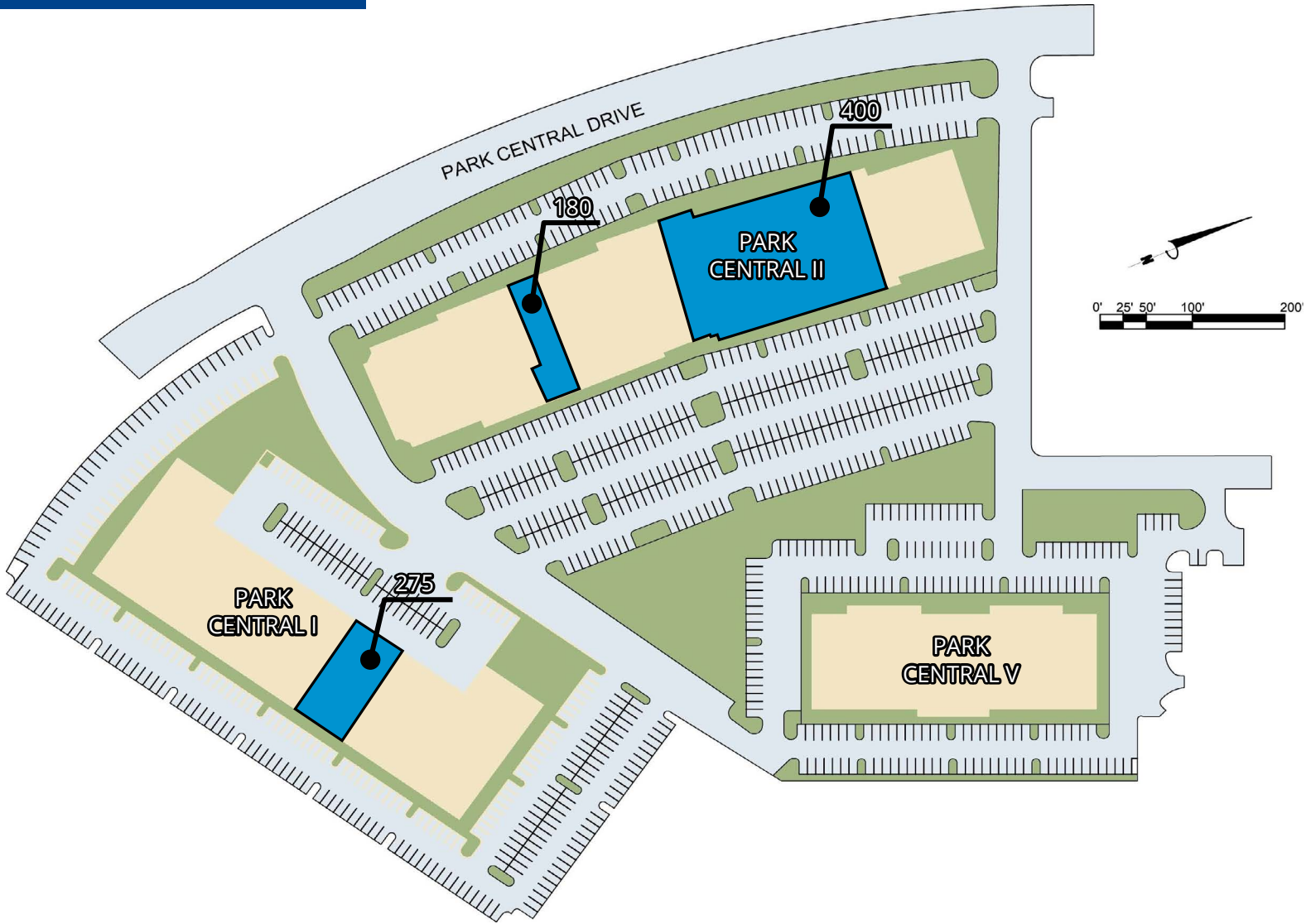
2221 Edward Holland Dr
Suite 600 | Richmond, VA
P: +1 804 320 5500
F: +1 804 320 4839
colliers.com/richmond

Park Central II Richmond, VA

8751 Park Central Drive

- Part of three building, class A, one story office park totaling 204,696 SF
- 96,455 SF office building
- 2 suites available:
 - Suite 180: 4,378 SF
 - Suite 400: 25,618 SF***Subdividable from approximately 5,000 SF and up*
- Back up generator currently supports Suite 400
- 4.73/1,000 parking (968 total spaces)
- Building signage available
- Corporate park setting
- Direct access to I-95, Rt 1, I-295 and Route 301
- Comcast and Verizon available
- Brick and glass façade with private storefront entrances
- Located in Henrico County
- Owned and managed by Baker Properties - Richmond Limited Partnership

Park Central II



Available Space

8701 Park Central Drive - Park Central I

Suite 275 9,940 SF

8751 Park Central Drive - Park Central II

Suite 180 4,378 SF

Suite 400* 25,618 SF

*Subdividable from approximately 5,000 SF and up

Contact us:

John Carpin

Senior Vice President

+1 804 267 7216

john.carpin@colliers.com

Malcolm Randolph, SIOR

Senior Vice President

+1 804 267 7208

malcolm.randolph@colliers.com

Jimmy Martin, SIOR

Senior Vice President

+1 804 267 7218

jimmy.martin@colliers.com

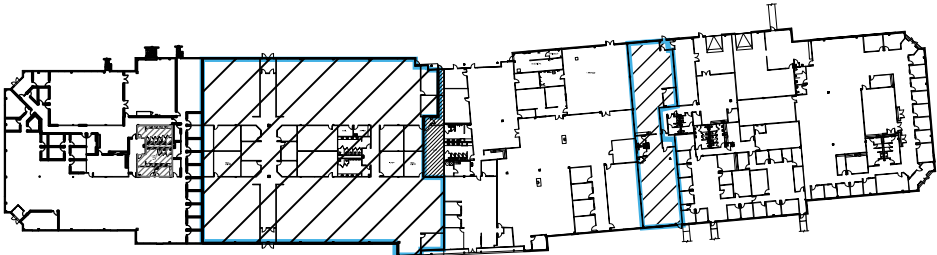
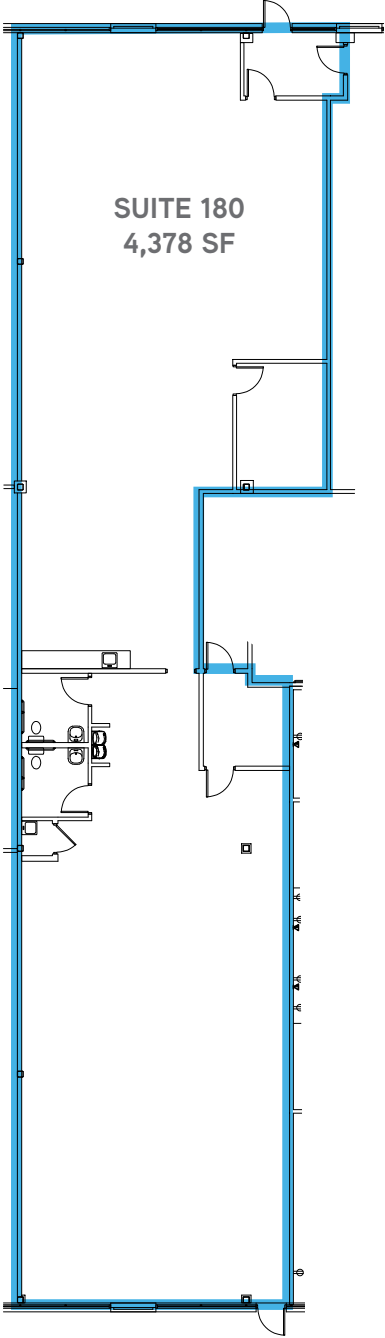
Catherine Walker

Vice President

+1 804 968 1978

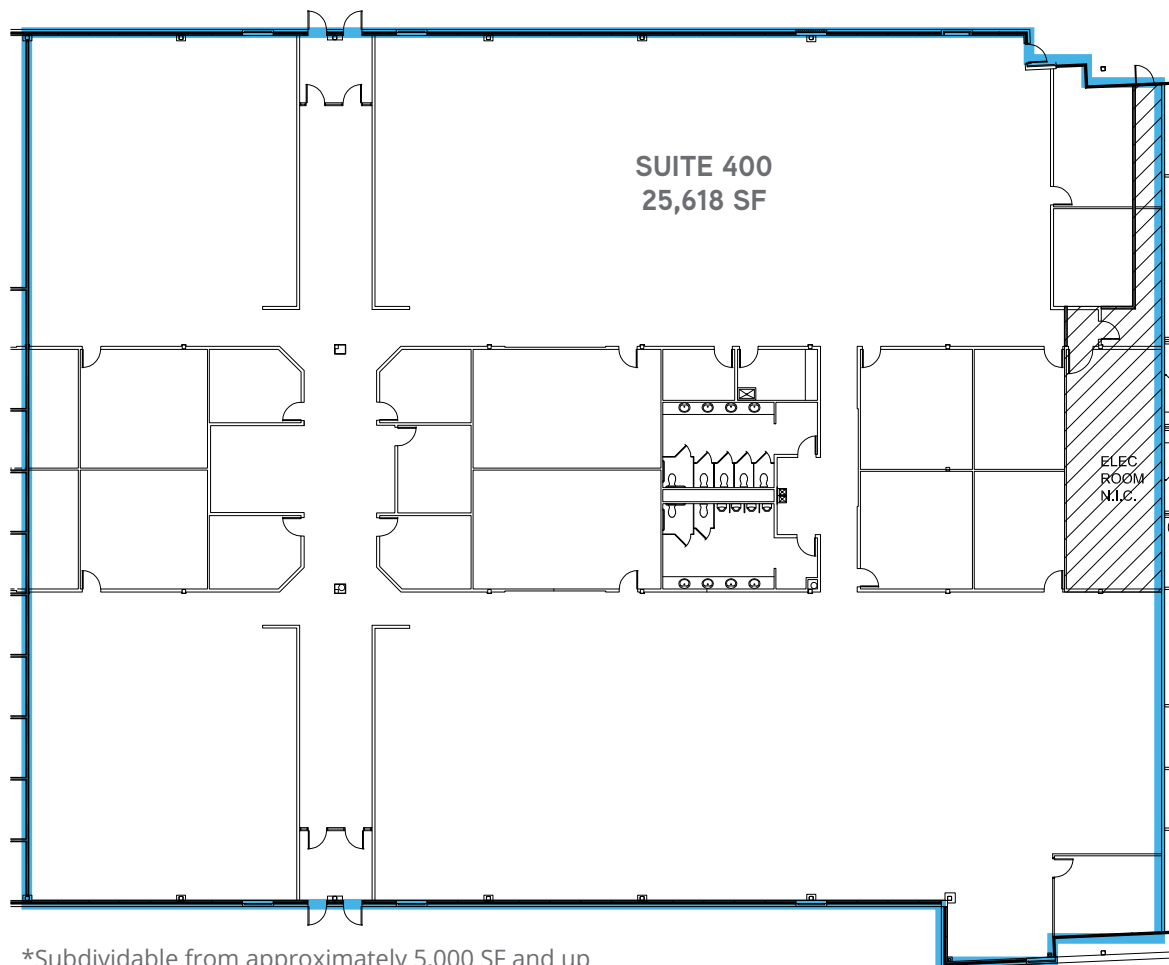
catherine.walker@colliers.com

Park Central II

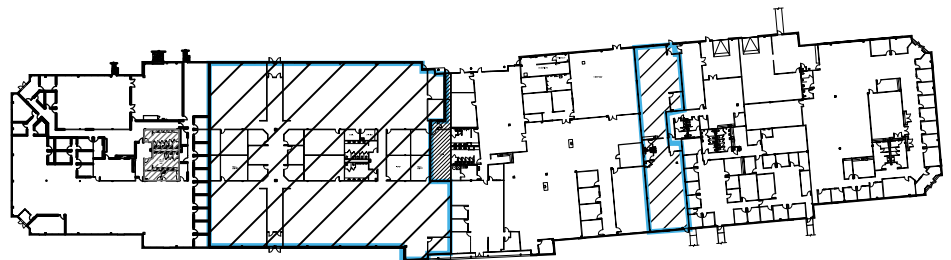


BUILDING KEY

Park Central II



*Subdividable from approximately 5,000 SF and up



BUILDING KEY

Contact us:

John Carpin

Senior Vice President

+1 804 267 7216

john.carpin@colliers.com

Malcolm Randolph, SIOR

Senior Vice President

+1 804 267 7208

malcolm.randolph@colliers.com

Jimmy Martin, SIOR

Senior Vice President

+1 804 267 7218

jimmy.martin@colliers.com

Catherine Walker

Vice President

+1 804 968 1978

catherine.walker@colliers.com

Park Central II



VIRGINIA CENTER COMMONS
Under Redevelopment

Redevelopment Plans Include:

- 215,000 SF indoor sports arena
- Six-story hotel
- 55 townhomes

GREENCITY ECODISTRICT
Proposed Development

Development Plans Include:

- 17,000 seat arena
- 2,400 apartments
- 280,000 SF retail/amenity space
- 2 hotels



FBI
North Run
Parham Place
Reynolds
Bank of America

SITE

Windsor Business Park



Contact us:

John Carpin
Senior Vice President
+1 804 267 7216
john.carpin@colliers.com

Malcolm Randolph, SIOR
Senior Vice President
+1 804 267 7208
malcolm.randolph@colliers.com

Jimmy Martin, SIOR
Senior Vice President
+1 804 267 7218
jimmy.martin@colliers.com

Catherine Walker
Vice President
+1 804 968 1978
catherine.walker@colliers.com