



## SUNDODGER RETAIL

4218 Roosevelt Way NE, Seattle WA | \$24/SQFT/Year | 2,225 - 2,388 SQFT

Take advantage of this opportunity to lease a retail storefront along one of the busiest arterials in Seattle. With over 14,000 vehicles passing through daily (CoStar), a user can immediately position themselves along the heavily trafficked Roosevelt Way corridor in the University District. Situated below 110 residential units, with a built-in client base of students and residents alike, a user can immediately establish a strong neighborhood presence and benefit from consistent foot traffic throughout the day. The space is ideally suited for a variety of retail or food-and-beverage concepts looking to capitalize on the area's dense population, walkability, and proximity to the University of Washington. Contact listing broker for more information and tours.



# SUNDODGER RETAIL

**Address** 4218 Roosevelt Way NE  
Seattle, WA 98105

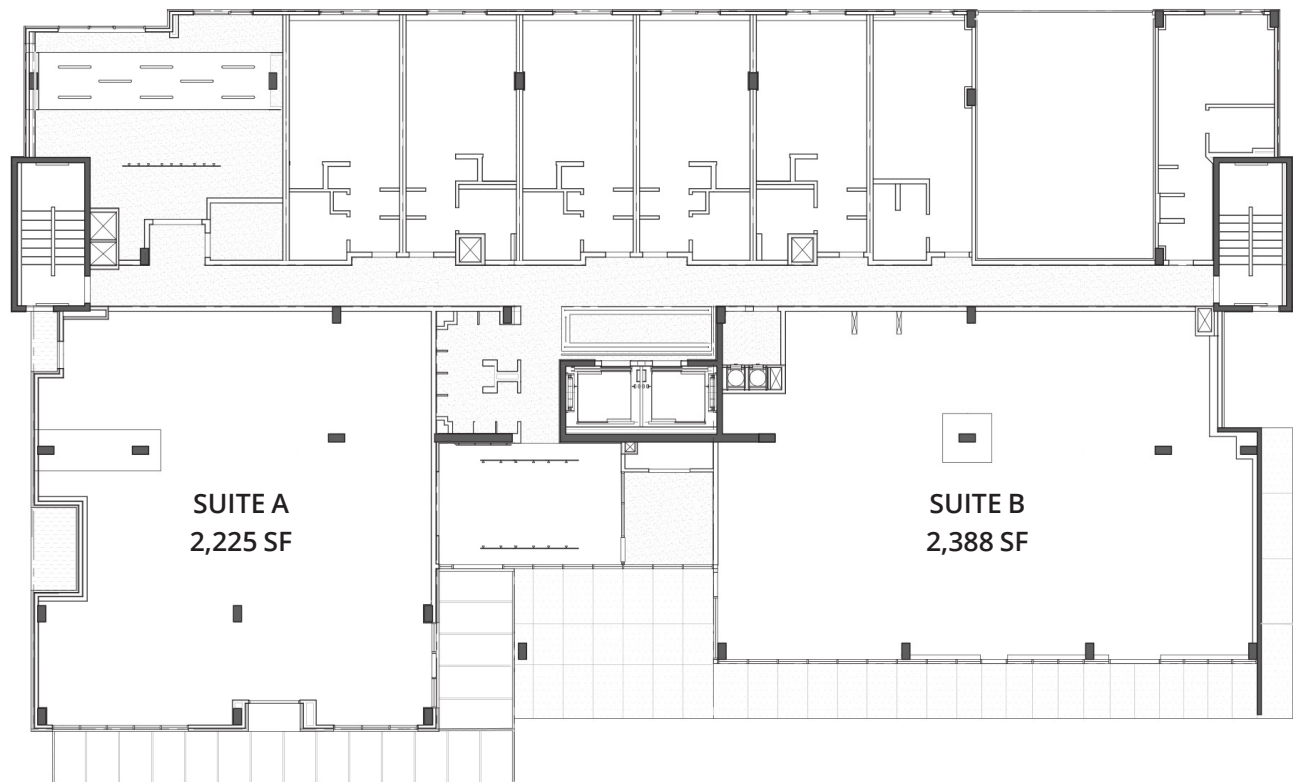
**Units** A - 2,225 SqFt  
B - 2,388 SqFt

**Rental Rate** \$24/SqFt/Year

**NNN** Contact Broker for Details



**CONTACT LEASING BROKER FOR MORE INFORMATION**



**MITCH BATTISON**  
206.812.9137  
Mitch@paragonREA.com



**PARAGON**  
REAL ESTATE ADVISORS

600 University St, Suite 2018 | Seattle, WA 98101

Information within this marketing package has been secured from sources we believe to be reliable, but we make no representations or warranties, expressed or implied, as to the accuracy of the information. References to square footage or age are approximate. Buyer must verify all information and bears all risk for inaccuracies.