

Weaver Park Center

324 W Wendover Ave | Greensboro, NC 27408

CLASS A OFFICE BUILDING | 60,000± SF



Property Overview

Three-story, Class A, office building with abundant parking and easy access. Prime location on the corner of West Wendover Ave and Cridland Ave. Easy access to Downtown Greensboro, Green Valley, Friendly Center, and Moses Cone Hospital.

- + **Building Size:** 60,000± RSF
- + **Available Suites:**
 - **First Floor – Suite 110:** 1,791± RSF
 - **Third Floor:** 1,167 – 9,745± RSF
- + **Conference/Training Facility:** Includes 1,390 SF, full kitchen, lounge area, flat screen, projectors with full audio/visual capabilities (available to building tenants)
- + **Location Amenities:** Close proximity to banks, restaurants, retail shopping, nearby parks and walking trails



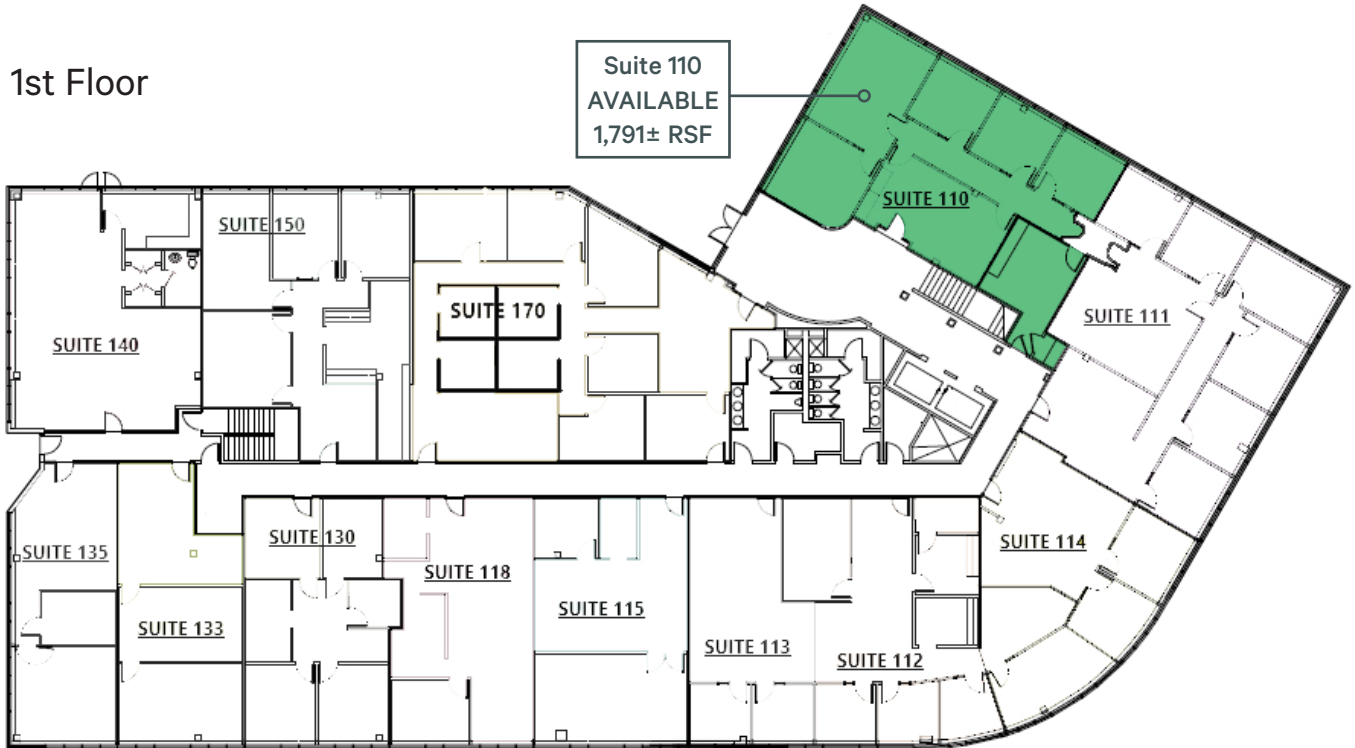
Photo Gallery



Floor Plans

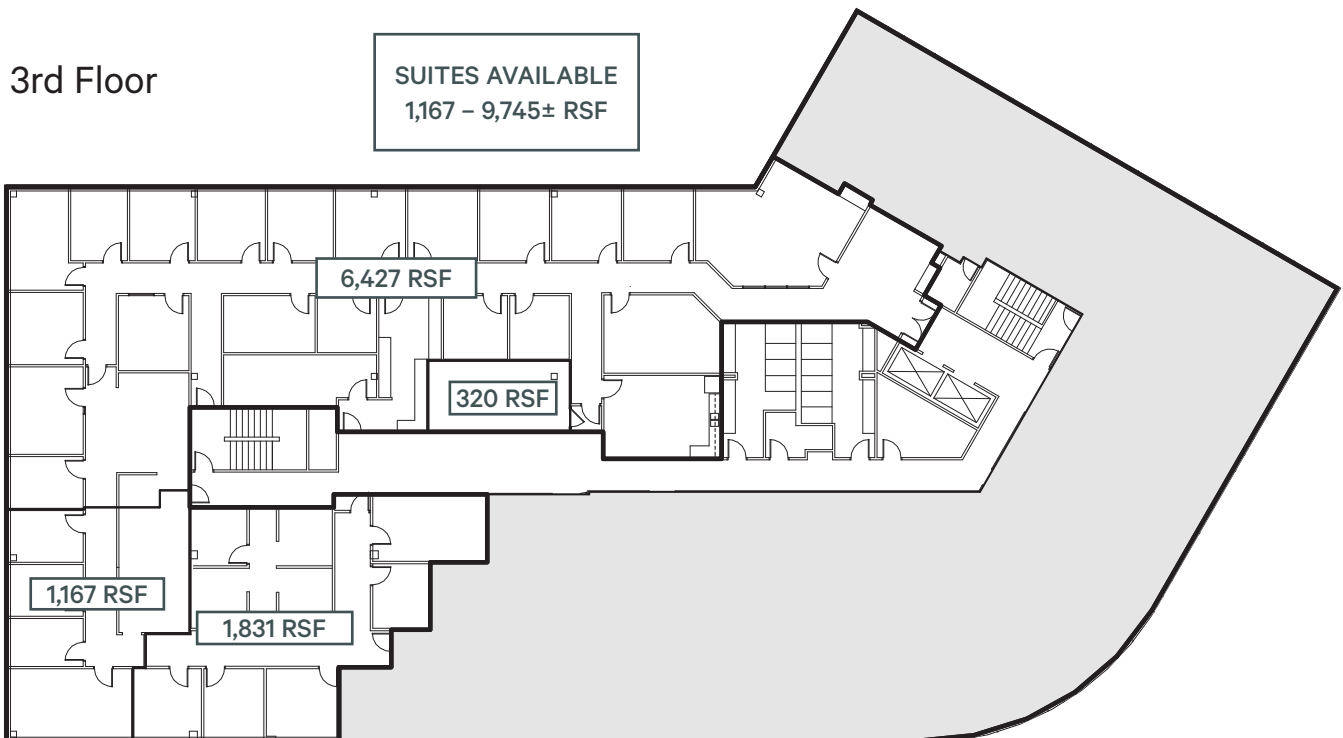
1st Floor

Suite 110
AVAILABLE
1,791± RSF



3rd Floor

SUITES AVAILABLE
1,167 - 9,745± RSF

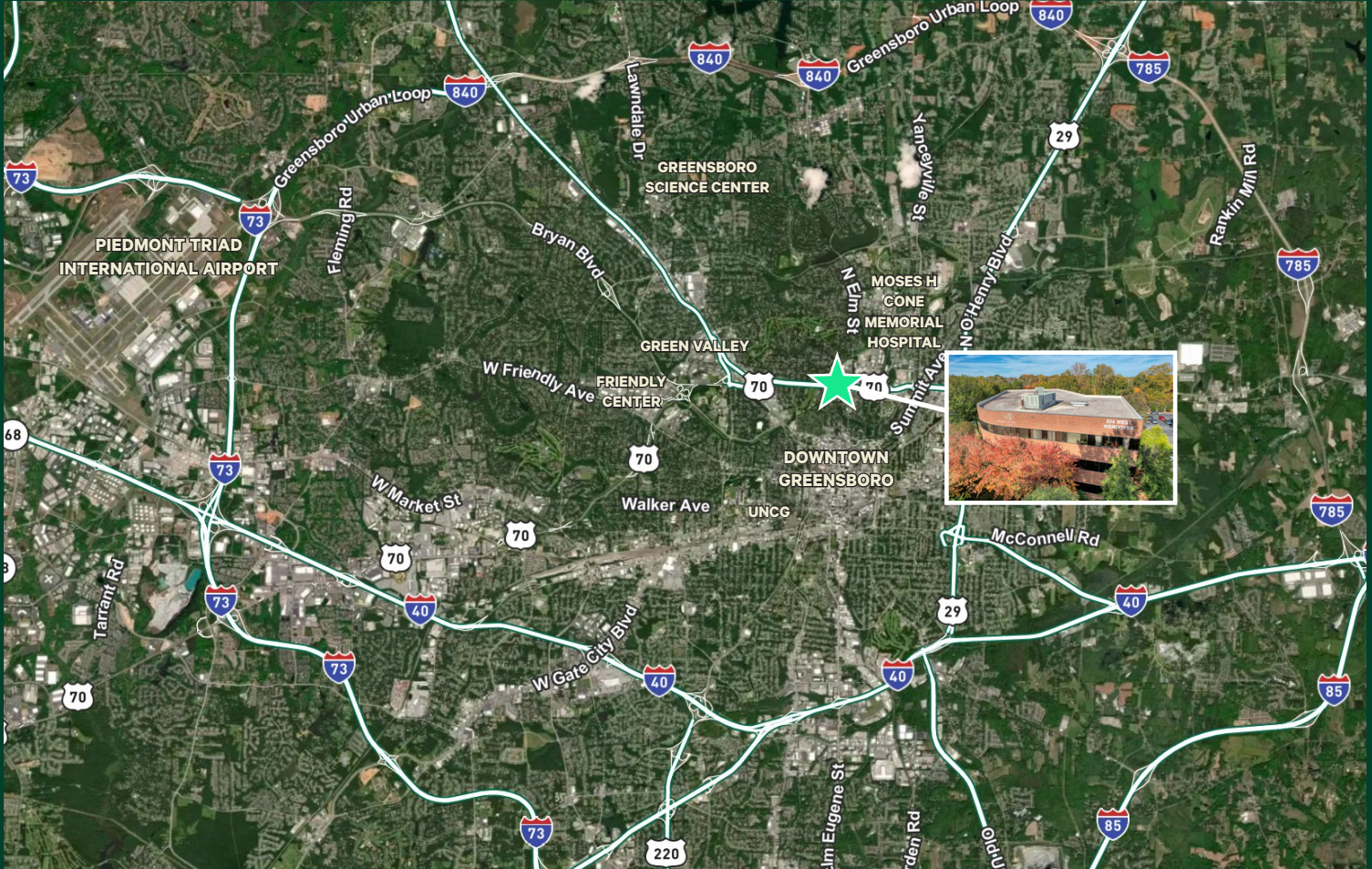


Class A Office Space Near Downtown Greensboro

324 W. Wendover Ave | Greensboro, NC 27408

For Lease

Location Map



2026 DEMOGRAPHICS	1 MILE	3 MILE	5 MILE
Population	7,279	100,982	204,256
Daytime Population	30,141	148,104	247,901
Average Household Income	\$122,446	\$85,321	\$88,795

*Source: CBRE Fast Reports

TRAFFIC COUNTS	
W Wendover Ave	53,000 VPD
N Elm St	9,200 VPD

*Vehicles Per Day NC DOT

Contact Us

Lydia Whitley

Vice President

+1 336 714 0385

lydia.whitley@cbre.com

© 2026 CBRE Inc., All rights reserved. This information has been obtained from sources believed reliable, but has not been verified for accuracy or completeness. You should conduct a careful, independent investigation of the property and verify all information. Any reliance on this information is solely at your own risk. CBRE and the CBRE logo are service marks of CBRE, Inc. All other marks displayed on this document are the property of their respective owners, and the use of such logos does not imply any affiliation with or endorsement of CBRE. Photos herein are the property of their respective owners. Use of these images without the express written consent of the owner is prohibited.