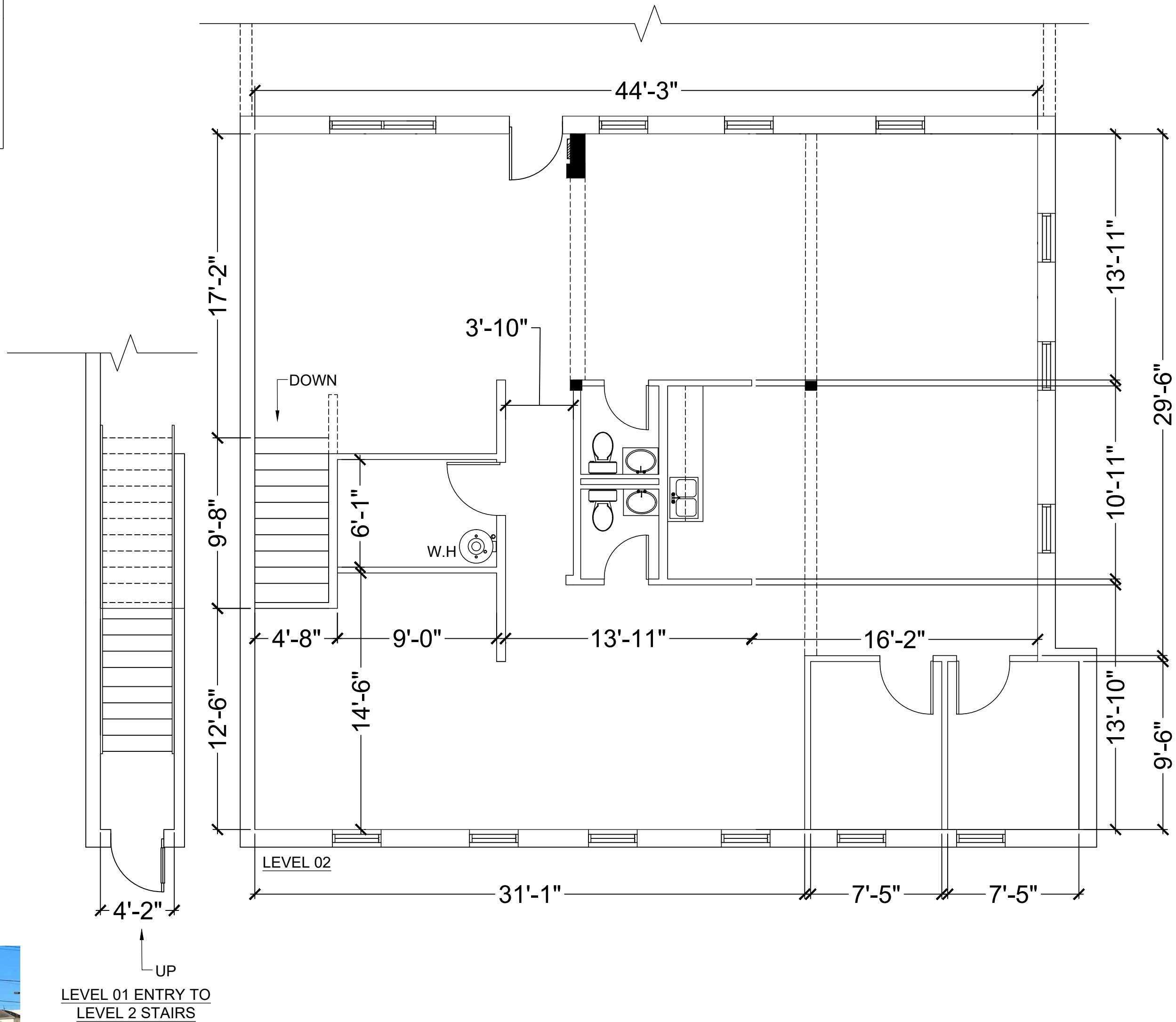


SUITE # 1921B
1,931 SF.



UP
 LEVEL 01 ENTRY TO
 LEVEL 2 STAIRS

Floor plans are for conceptual purposes only; they are not to scale and may not reflect existing conditions. As-builts must be verified. Not for regulatory approval, permitting, or construction.



CONTACT
 Leasing Agent: Eric D Drymalla
 Phone: 713-974-4292
 Email: edrymalla@tarantino.com

736-742 E 20TH STREET
LEVEL 02, SUITE # 1921B

CB22601.34-I.K

MARCH 17, 2026



CONTACT
 5065 Westheimer Rd., Ste #1100, Houston, TX 77056
 Phone: (713) 783.5900 | Fax: (713) 783.6066
 www.cdi-douglass-pye.com