

London Oxford Airport Office & Storage Space Availability (& who's where today)

Version 30 - October 2024

Rental costs are indicative only



= Available Spaces



Cherwell & Yorkon Office Blocks

*ex-OAA/CAE pilot training
college buildings No.s 27-30*

(Landside)

 = available space

Cherwell A
Block (Central)

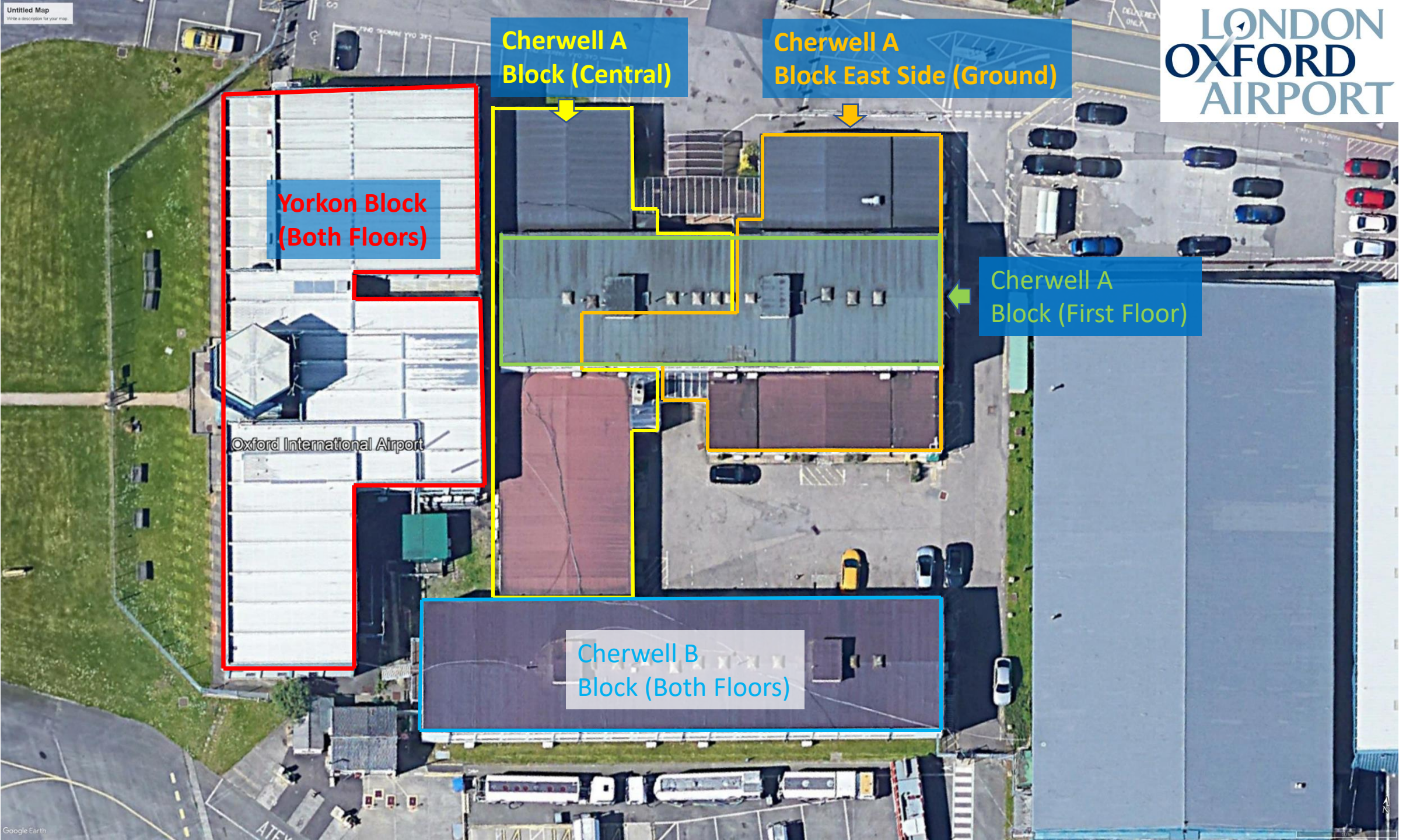
Cherwell A
Block East Side (Ground)

Yorkon Block
(Both Floors)

Cherwell A
Block (First Floor)

Oxford International Airport

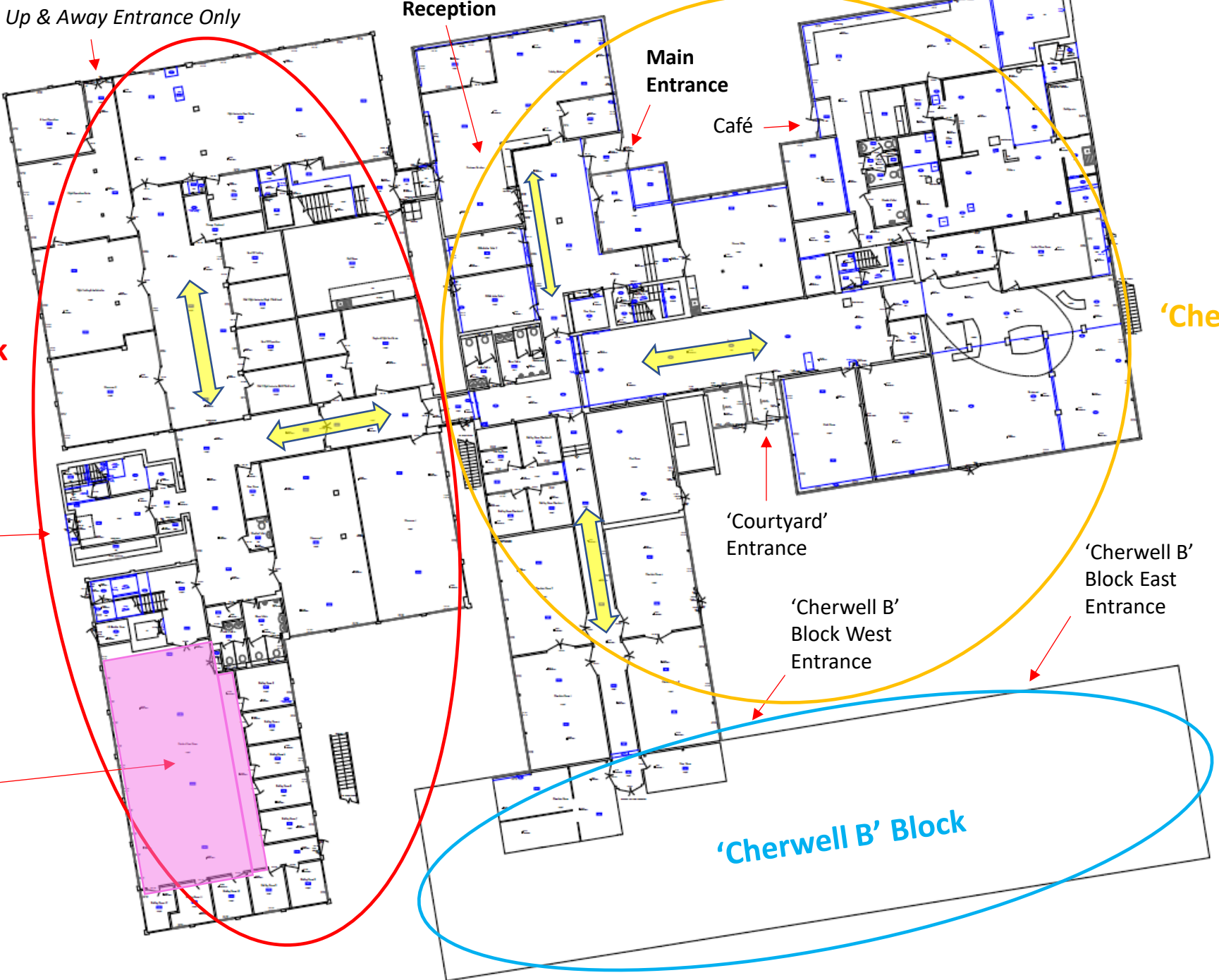
Cherwell B
Block (Both Floors)





Main Yorkon Building (foreground) and Cherwell Blocks (to the rear)

Whole
Ground
Floor



Up & Away Entrance Only

Reception

Main
Entrance

Café

'Yorkon' Block

'Cherwell A' Block

Control
Tower -
West Side
Entrance

'Courtyard'
Entrance

'Cherwell B'
Block East
Entrance

PFT &
Livingstone
Skies 'Flight
Club' Member
& GA Lounge

'Cherwell B'
Block West
Entrance

'Cherwell B' Block

**Cherwell A
Central
Ground Floor
North Side**

Pilot Flight Training & Livingstone Skies
Reception
& Pilot Shop (CC G2 & G3)

Main Entrance
(Reception)

Hertz Rental (CC G5)

Global Parts
(Piper Germany) (CCG6)

RJA Security Office
(CC G1)

Airport & Office Block
Reception (CC G21)

Airport Post Room
(CC G21)

Airport Pass Office
(CC G20)

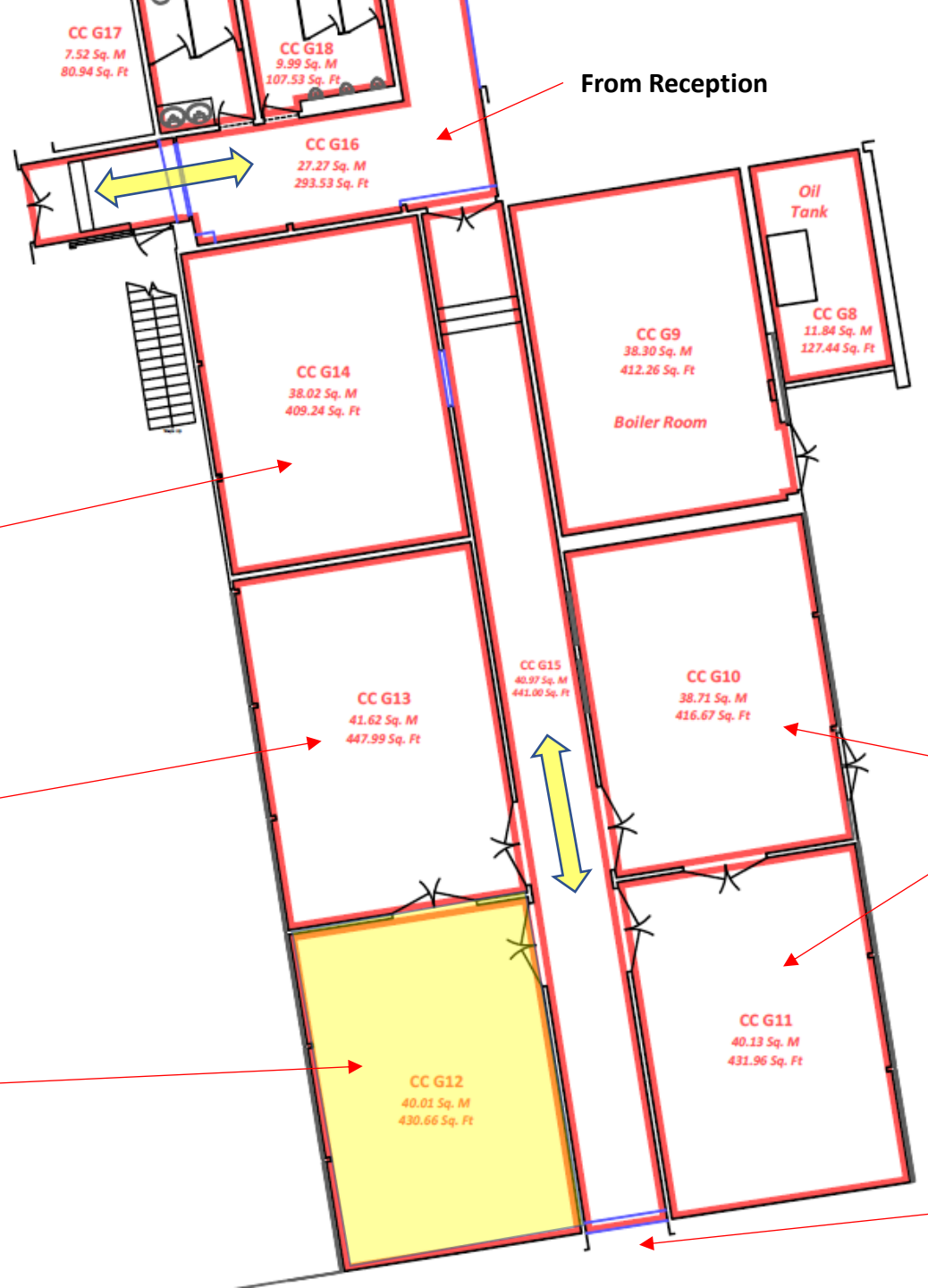
Cherwell Small
Meeting Room (for
hire from airport
(CC G19)

Hallway to General
Aviation Zone/Terminal



All this area now allocated

**Cherwell A
'Central'
Ground Floor
South Side**



**Volare Aviation
(Record Stores No.1)
CC G14**

**Volare Aviation
(Record Stores No.2)
CC G13 – 448 sq.ft.**

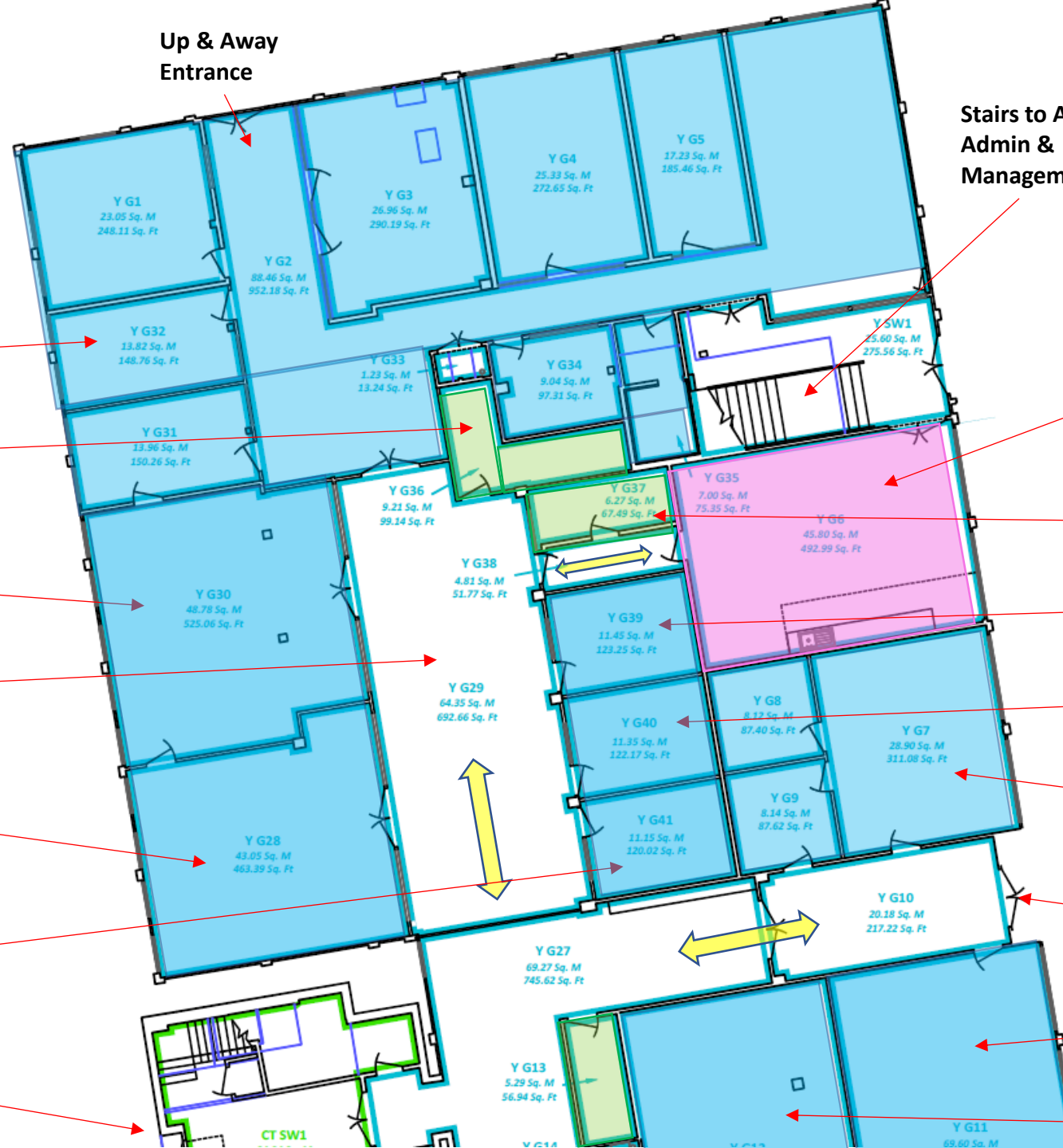
**Available
(Offices or Stores)
CC G12 - £825+VAT/month
all-inclusive**

From Reception

Was CAE Healthcare,
now 'Elevate Health'
(under review from
Jan 1st 2025)

To Cherwell B Block

Yorkon Block Ground Floor North Side



Up & Away
Entrance

Stairs to Airport
Admin &
Management

Stores (Y G13, Y G36, Y G37)
All now allocated

Up & Away Aviation

GA Lounge & Shared
Tenant Staff Kitchen
& Rest Room

Up & Away Aviation
Store/Server Room
(Y G36)

Security/RJA Archive
(Y G37)

Y G30 – 525 sq.ft.
Up & Away Aviation

SaxonAir (from Nov. 23)
(Y G39 – 123 sq.ft.)

GA Terminal Hall

PAL-V (Y G40)

(Y G28) – 463 sq.ft.
Cirrus Aircraft (was GA
Lounge)

Volare Aviation Cabin Crew
Office & Stores
(Y G7, Y G8 & Y G9)

Premier Cars
(Y G41)

To Reception

Control Tower West-
Side Entrance

'Exam Hall' – currently BF
LED (Y G11 only) – 749
sq.ft.

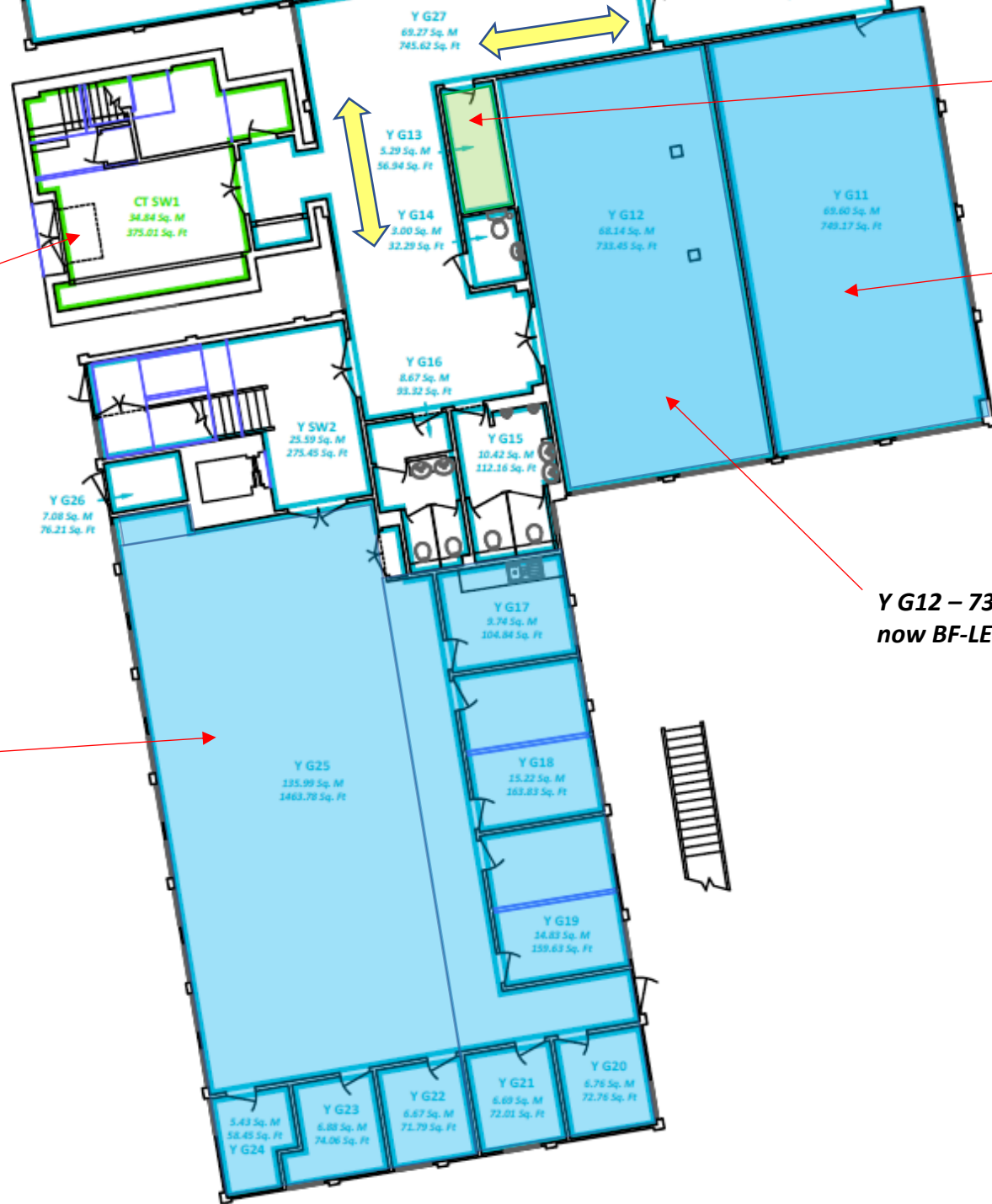
Y G12 – BF-LED

Room ID	Area (Sq. M)	Area (Sq. Ft.)
Y G1	23.05	248.11
Y G2	88.46	952.18
Y G3	26.96	290.19
Y G4	25.33	272.65
Y G5	17.23	185.46
Y G6	45.80	492.99
Y G7	28.90	311.08
Y G8	8.12	87.40
Y G9	8.14	87.62
Y G10	20.18	217.22
Y G11	69.60	749.00
Y G12	69.60	749.00
Y G13	5.29	56.94
Y G28	43.05	463.39
Y G29	64.35	692.66
Y G30	48.78	525.06
Y G31	13.96	150.26
Y G32	13.82	148.76
Y G33	1.23	13.24
Y G34	9.04	97.31
Y G35	7.00	75.35
Y G36	9.21	99.14
Y G37	6.27	67.49
Y G38	4.81	51.77
Y G39	11.45	123.25
Y G40	11.35	122.17
Y G41	11.15	120.02
Y G27	69.27	745.62
Y G29	64.35	692.66
Y G30	48.78	525.06
Y G31	13.96	150.26
Y G32	13.82	148.76
Y G33	1.23	13.24
Y G34	9.04	97.31
Y G35	7.00	75.35
Y G36	9.21	99.14
Y G37	6.27	67.49
Y G38	4.81	51.77
Y G39	11.45	123.25
Y G40	11.35	122.17
Y G41	11.15	120.02
Y G27	69.27	745.62
Y G29	64.35	692.66
Y G30	48.78	525.06
Y G31	13.96	150.26
Y G32	13.82	148.76
Y G33	1.23	13.24
Y G34	9.04	97.31
Y G35	7.00	75.35
Y G36	9.21	99.14
Y G37	6.27	67.49
Y G38	4.81	51.77
Y G39	11.45	123.25
Y G40	11.35	122.17
Y G41	11.15	120.02
Y G27	69.27	745.62
Y G29	64.35	692.66
Y G30	48.78	525.06
Y G31	13.96	150.26
Y G32	13.82	148.76
Y G33	1.23	13.24
Y G34	9.04	97.31
Y G35	7.00	75.35
Y G36	9.21	99.14
Y G37	6.27	67.49
Y G38	4.81	51.77
Y G39	11.45	123.25
Y G40	11.35	122.17
Y G41	11.15	120.02
Y G27	69.27	745.62
Y G29	64.35	692.66
Y G30	48.78	525.06
Y G31	13.96	150.26
Y G32	13.82	148.76
Y G33	1.23	13.24
Y G34	9.04	97.31
Y G35	7.00	75.35
Y G36	9.21	99.14
Y G37	6.27	67.49
Y G38	4.81	51.77
Y G39	11.45	123.25
Y G40	11.35	122.17
Y G41	11.15	120.02
Y G27	69.27	745.62
Y G29	64.35	692.66
Y G30	48.78	525.06
Y G31	13.96	150.26
Y G32	13.82	148.76
Y G33	1.23	13.24
Y G34	9.04	97.31
Y G35	7.00	75.35
Y G36	9.21	99.14
Y G37	6.27	67.49
Y G38	4.81	51.77
Y G39	11.45	123.25
Y G40	11.35	122.17
Y G41	11.15	120.02
Y G27	69.27	745.62
Y G29	64.35	692.66
Y G30	48.78	525.06
Y G31	13.96	150.26
Y G32	13.82	148.76
Y G33	1.23	13.24
Y G34	9.04	97.31
Y G35	7.00	75.35
Y G36	9.21	99.14
Y G37	6.27	67.49
Y G38	4.81	51.77
Y G39	11.45	123.25
Y G40	11.35	122.17
Y G41	11.15	120.02
Y G27	69.27	745.62
Y G29	64.35	692.66
Y G30	48.78	525.06
Y G31	13.96	150.26
Y G32	13.82	148.76
Y G33	1.23	13.24
Y G34	9.04	97.31
Y G35	7.00	75.35
Y G36	9.21	99.14
Y G37	6.27	67.49
Y G38	4.81	51.77
Y G39	11.45	123.25
Y G40	11.35	122.17
Y G41	11.15	120.02
Y G27	69.27	745.62
Y G29	64.35	692.66
Y G30	48.78	525.06
Y G31	13.96	150.26
Y G32	13.82	148.76
Y G33	1.23	13.24
Y G34	9.04	97.31
Y G35	7.00	75.35
Y G36	9.21	99.14
Y G37	6.27	67.49
Y G38	4.81	51.77
Y G39	11.45	123.25
Y G40	11.35	122.17
Y G41	11.15	120.02
Y G27	69.27	745.62
Y G29	64.35	692.66
Y G30	48.78	525.06
Y G31	13.96	150.26
Y G32	13.82	148.76
Y G33	1.23	13.24
Y G34	9.04	97.31
Y G35	7.00	75.35
Y G36	9.21	99.14
Y G37	6.27	67.49
Y G38	4.81	51.77
Y G39	11.45	123.25
Y G40	11.35	122.17
Y G41	11.15	120.02
Y G27	69.27	745.62
Y G29	64.35	692.66
Y G30	48.78	525.06
Y G31	13.96	150.26
Y G32	13.82	148.76
Y G33	1.23	13.24
Y G34	9.04	97.31
Y G35	7.00	75.35
Y G36	9.21	99.14
Y G37	6.27	67.49
Y G38	4.81	51.77
Y G39	11.45	123.25
Y G40	11.35	122.17
Y G41	11.15	120.02
Y G27	69.27	745.62
Y G29	64.35	692.66
Y G30	48.78	525.06
Y G31	13.96	150.26
Y G32	13.82	148.76
Y G33	1.23	13.24
Y G34	9.04	97.31
Y G35	7.00	75.35
Y G36	9.21	99.14
Y G37	6.27	67.49
Y G38	4.81	51.77
Y G39	11.45	123.25
Y G40	11.35	122.17
Y G41	11.15	120.02
Y G27	69.27	745.62
Y G29	64.35	692.66
Y G30	48.78	525.06
Y G31	13.96	150.26
Y G32	13.82	148.76
Y G33	1.23	13.24
Y G34	9.04	97.31
Y G35	7.00	75.35
Y G36	9.21	99.14
Y G37	6.27	67.49
Y G38	4.81	51.77
Y G39	11.45	123.25
Y G40	11.35	122.17
Y G41	11.15	120.02
Y G27	69.27	745.62
Y G29	64.35	692.66
Y G30	48.78	525.06
Y G31	13.96	150.26
Y G32	13.82	148.76
Y G33	1.23	13.24
Y G34	9.04	97.31
Y G35	7.00	75.35
Y G36	9.21	99.14
Y G37	6.27	67.49
Y G38	4.81	51.77
Y G39	11.45	123.25
Y G40	11.35	122.17
Y G41	11.15	120.02
Y G27	69.27	745.62
Y G29	64.35	692.66
Y G30	48.78	525.06
Y G31	13.96	150.26
Y G32	13.82	148.76
Y G33	1.23	13.24
Y G34	9.04	97.31
Y G35	7.00	75.35
Y G36	9.21	99.14
Y G37	6.27	67.49
Y G38	4.81	51.77
Y G39	11.45	123.25
Y G40	11.35	122.17
Y G41	11.15	120.02
Y G27	69.27	745.62
Y G29	64.35	692.66
Y G30	48.78	525.06
Y G31	13.96	150.26
Y G32	13.82	148.76
Y G33	1.23	13.24
Y G34	9.04	97.31
Y G35	7.00	75.35
Y G36	9.21	99.14
Y G37	6.27	67.49
Y G38	4.81	51.77
Y G39	11.45	123.25
Y G40	11.35	122.17
Y G41	11.15	120.02
Y G27	69.27	745.62
Y G29	64.35	692.66
Y G30	48.78	525.06
Y G31	13.96	150.26
Y G32	13.82	148.76
Y G33	1.23	13.24
Y G34	9.04	97.31
Y G35	7.00	75.35
Y G36	9.21	99.14
Y G37	6.27	67.49
Y G38	4.81	51.77
Y G39	11.45	123.25
Y G40	11.35	122.17
Y G41	11.15	120.02
Y G27	69.27	745.62
Y G29	64.35	692.66
Y G30	48.78	525.06
Y G31	13.96	150.26
Y G32	13.82	148.76
Y G33	1.23	13.24
Y G34	9.04	97.31
Y G35	7.00	75.35
Y G36	9.21	99.14
Y G37	6.27	67.49
Y G38	4.81	51.77
Y G39	11.45	123.25
Y G40	11.35	122.17
Y G41	11.15	120.02
Y G27	69.27	745.62
Y G29	64.35	692.66
Y G30	48.78	525.06
Y G31	13.96	150.26
Y G32	13.82	148.76
Y G33	1.23	13.24
Y G34	9.04	97.31
Y G35	7.00	75.35
Y G36	9.21	99.14
Y G37	6.27	67.49
Y G38	4.81	51.77
Y G39	11.45	123.25
Y G40	11.35	122.17
Y G41	11.15	120.02
Y G27	69.27	745.62
Y G29	64.35	692.66
Y G30	48.78	525.06
Y G31	13.96	150.26
Y G32	13.82	148.76
Y G33	1.23	13.24
Y G34	9.04	97.31
Y G35	7.00	75.35
Y G36	9.21	99.14
Y G37	6.27	67.49
Y G38	4.81	51.77
Y G39	11.45	123.25
Y G40	11.35	122.17
Y G41	11.15	120.02
Y G27	69.27	745.62
Y G29	64.35	692.66
Y G30	48.78	525.06
Y G31	13.96	150.26
Y G32	13.82	148.76
Y G33	1.23	13.24
Y G34	9.04	97.31
Y G35	7.00	75.35
Y G36	9.21	99.14
Y G37	6.27	67.49
Y G38	4.81	51.77
Y G39	11.45	123.25
Y G40	11.35	122.17
Y G41	11.15	120.02
Y G27	69.27	745.62
Y G29	64.35	692.66
Y G30	48.78	525.06
Y G31	13.96	150.26
Y G32	13.82	148.76
Y G33	1.23	13.24
Y G34	9.04	97.31
Y G35	7.00	75.35
Y G36	9.21	99.14
Y G37	6.27	67.49
Y G38	4.81	51.77
Y G39	11.45	123.25
Y G40	11.35	122.17
Y G41	11.15	120.02
Y G27	69.27	745.62
Y G29	64.35	692.66
Y G30	48.78	525.06
Y G31	13.96	150.26
Y G32	13.82	148.76
Y G33	1.23	13.24
Y G34	9.04	

Yorkon Block Ground Floor South Side

Control Tower West-Side Entrance

Pilot Flight Training (PFT)
& Livingstone Skies
&
'Flight Club'
member lounge



Y G13 Cleaner's Store

Old 'Exam Hall'
(Y G11) – 749 sq.ft. divided by
partition wall

Temp occupied by BF-LED, can
vacate at short notice

Y G12 – 733 sq.ft.
now BF-LED

**Yorkon Block
First Floor
North Side**



Oxford Airport
Management &
Administration

ATC/Airport Training &
Board Room (Y F10)

NATS Office (Y F11)

ATC Office
and Rest
Area
(Y F25)

Available to Rent/Lease
(Y F13) – 574 sq.ft. –
£1,101+VAT/month all-inclusive
(ready to go – refurbished)

Available to Rent/Lease
(Y F12) – 503 sq.ft. –
£965+VAT/month all-inclusive
*(Needs paint and carpet clean –
1 week)*

Y F1
23.41 Sq. M
251.98 Sq. Ft

Y F2
12.63 Sq. M
135.95 Sq. Ft

Y F3
8.52 Sq. M
91.71 Sq. Ft

Y F4
12.16 Sq. M
130.89 Sq. Ft

Y F5
13.51 Sq. M
145.42 Sq. Ft

Y F6
9.11 Sq. M
98.06 Sq. Ft

Y F30
5.00 Sq. M
53.82 Sq. Ft

Y F29
44.36 Sq. M
477.49 Sq. Ft

Y F7
14.24 Sq. M
153.28 Sq. Ft

Y F31
3.68 Sq. M
39.61 Sq. Ft

Y F8
5.82 Sq. M
62.65 Sq. Ft

Y F27
16.94 Sq. M
182.34 Sq. Ft

Y SW1
24.70 Sq. M
265.87 Sq. Ft

Y F9
3.86 Sq. M
41.55 Sq. Ft

Y F32
10.98 Sq. M
118.19 Sq. Ft

Y F10
70.92 Sq. M
763.38 Sq. Ft

Y F26
31.05 Sq. M
334.22 Sq. Ft

Y F28
23.95 Sq. M
257.80 Sq. Ft

Y F11
5.19 Sq. M
55.86 Sq. Ft

Y F25
49.66 Sq. M
534.54 Sq. Ft

Y F12
46.78 Sq. M
503.54 Sq. Ft

Y F13
53.35 Sq. M
574.25 Sq. Ft

Y F24
46.41 Sq. M
499.55 Sq. Ft

Y F15
11.70 Sq. M
125.94 Sq. Ft

**Yorkon Block
First Floor
South Side**

Control Tower

**TUI Airline Training
(March 24)
(Y F20 – Y F23)
Total Zone = 2,383 sq.ft.**



**Volare Aviation
Training Rooms (now split
into two meeting rooms /
offices) (Y F14) 677 sq.ft.**

NATS Store

**Pilot Flight Training &
Livingstone Skies
Training Room (Y F16)**

**Cherwell A
Ground Floor
East Side**

*Go-Fly-Oxford
(1st March 24)
CA G10 - 404 sq.ft.*

Café Entrance

Café (Aviation Station)
& The Menu Guru
(Inflight and Hospitality
Catering)

Kitchen
Deliveries/Entrance

Kitchen

Kitchen stores

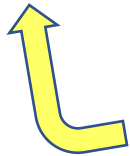
Event Hall (used often
with lecture theatre
upstairs)

Stairs to
Lecture
Theatre

Old Restaurant & Event
Catering Zone
CA G7 1,691 sq.ft.

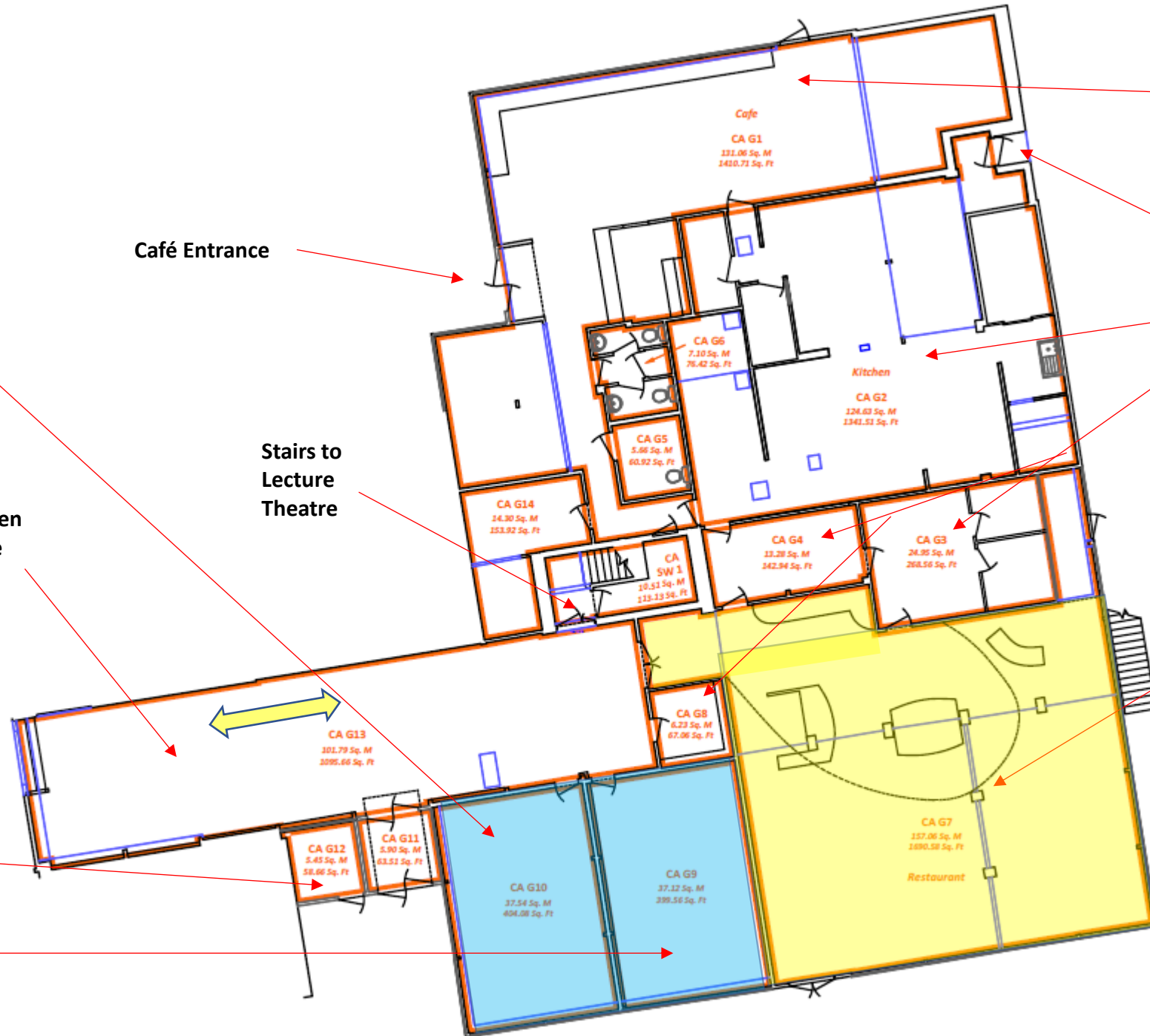
*Available to Rent/Lease –
can be surrendered by the
Café with one or two
months' notice. Needs
catering units removed
and new floor covering +
sub-dividing
£3,241+VAT/month all-
inclusive*

To
Reception



Store for Euclid Aero
CA G12 – 58 sq.ft.

*Go-Fly-Oxford
(1st March 24)
CA G9 - 400 sq.ft.*



Cherwell A First Floor

will be Skyrocket Upholstery from 1st
Jan 2025 (CA F3)

Mr Alex Darrell
(CA F5 & CA F6)

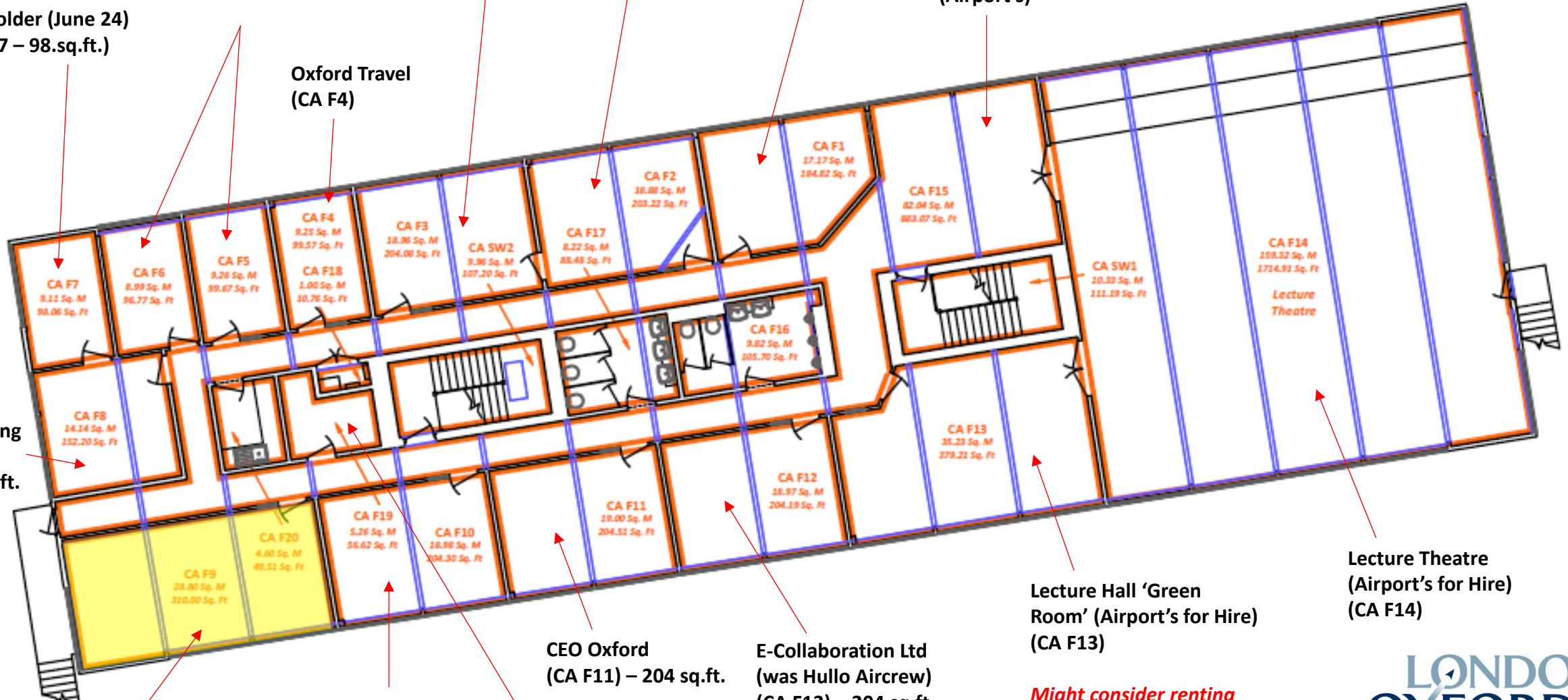
Elevate Air Ltd
(CA F2)

Textron Aircraft
Sales (CA F1)

Lecture Theatre
Reception
(Airport's)

Dr. Golder (June 24)
(CA F7 – 98.sq.ft.)

Oxford Travel
(CA F4)



Shaun
Pike
Plumbing
(CA F8)
152 sq.ft.

Available to Rent
(CA F9) – 310 sq.ft. -
£594+VAT all-inclusive

Euclid Aero Ltd
(CA F10) – 204 sq.ft.
From 1.12.23

Hullo Aircrew Store
(CA F19) – 57 sq.ft.

CEO Oxford
(CA F11) – 204 sq.ft.

E-Collaboration Ltd
(was Hullo Aircrew)
(CA F12) – 204 sq.ft.

Lecture Hall 'Green
Room' (Airport's for Hire)
(CA F13)

*Might consider renting
only when most other
office space is sold*

Lecture Theatre
(Airport's for Hire)
(CA F14)

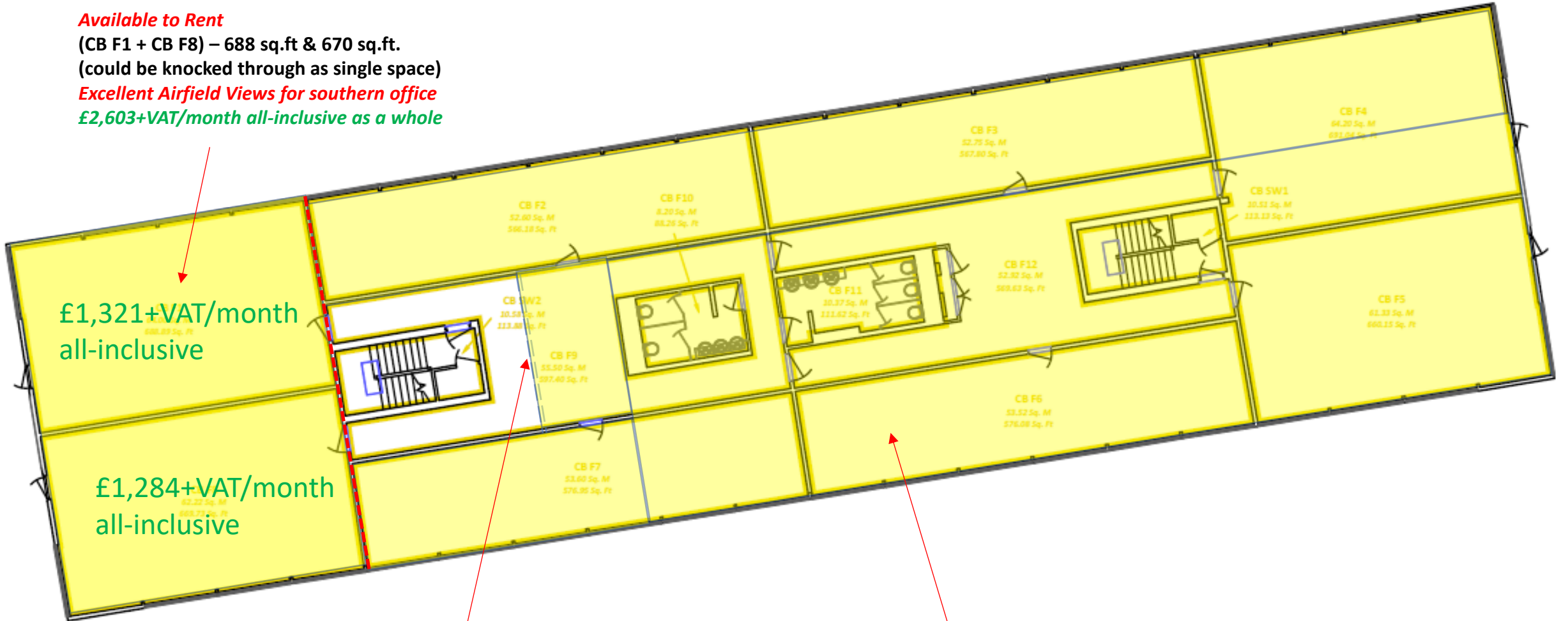
Cherwell B First Floor

Note: Entire Floor Upstairs now available from September 2024
£8,809+VAT / month all-inclusive (4,596 sq.ft. net lettable)

Available to Rent

(CB F1 + CB F8) – 688 sq.ft & 670 sq.ft.
(could be knocked through as single space)

Excellent Airfield Views for southern office
£2,603+VAT/month all-inclusive as a whole



**£1,321+VAT/month
all-inclusive**

**£1,284+VAT/month
all-inclusive**

**New wall segregating Airbus
Zone from CB F1 & CB F8**

**Whole zone shown (excl. CB F1 + CB F8) Net Lettable =
3,238 sq.ft. - £6,206+VAT / month all-inclusive**

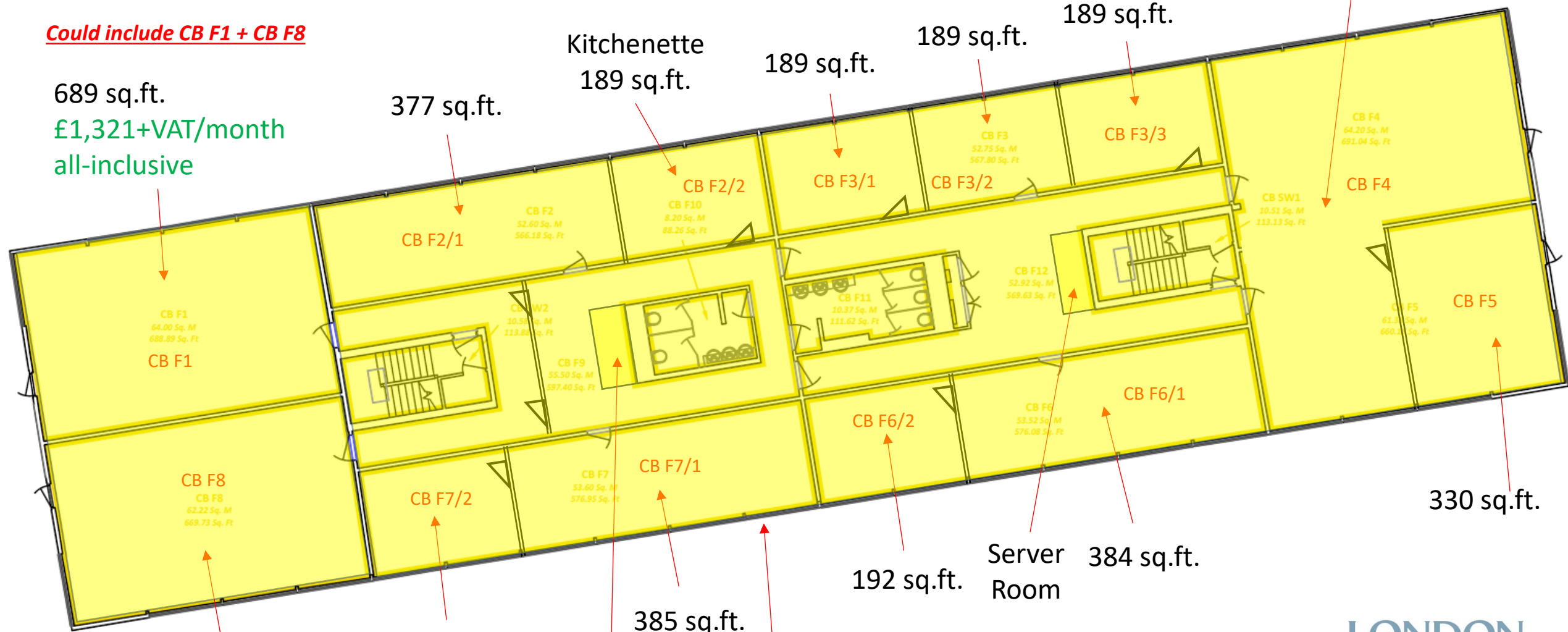
Cherwell B Block First Floor

Entire floor (4,597 sq.ft. net lettable) now available from September 2024

Could include CB F1 + CB F8

689 sq.ft.
£1,321+VAT/month
all-inclusive

1,021 sq.ft. (L-shaped)

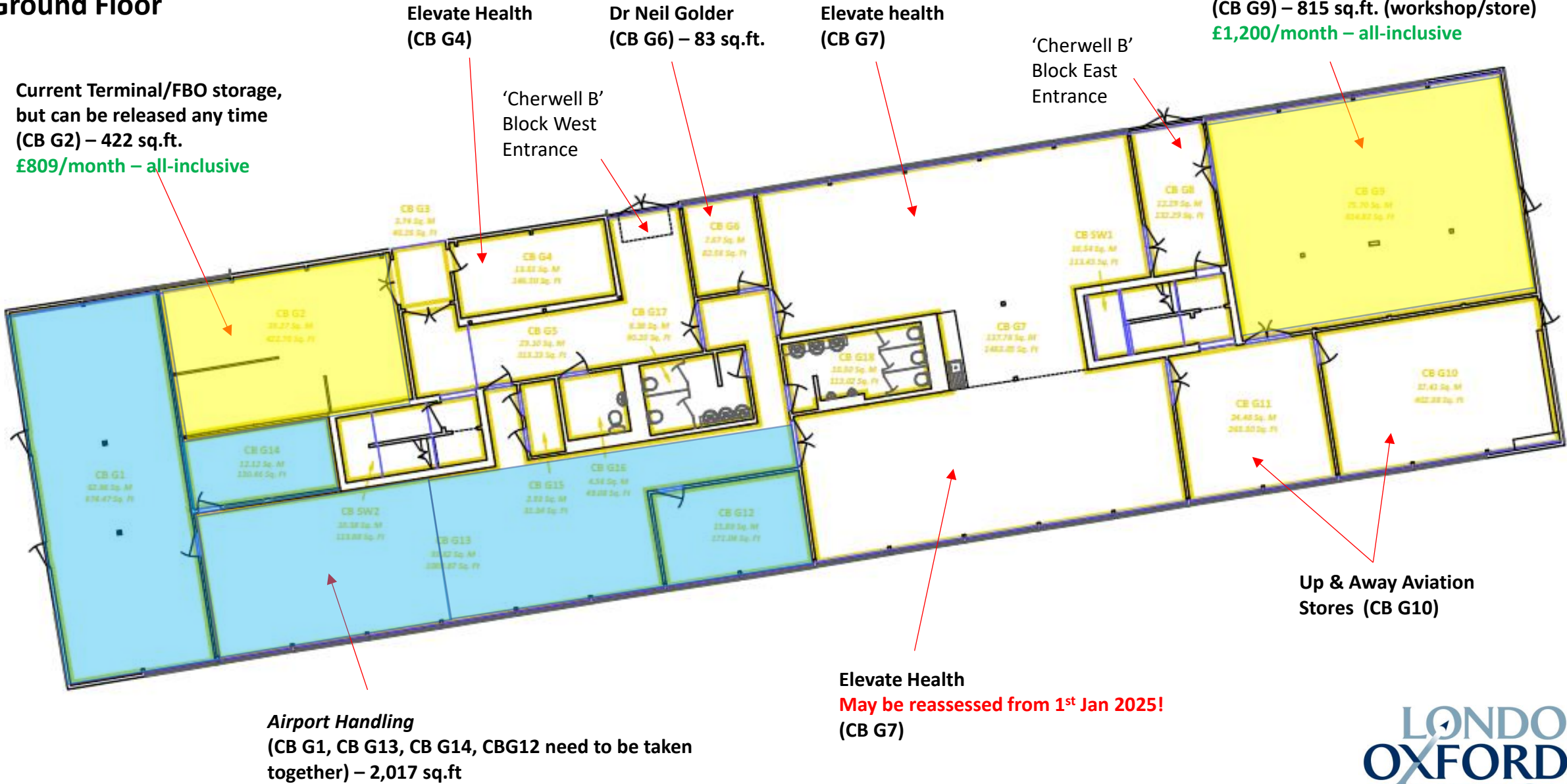


670 sq.ft.
£1,284+VAT/month
all-inclusive

Shower Pod

Whole zone shown (excl. CB F1 + CB F8) Net Lettable = 3,238 sq.ft. - £6,206+VAT / month all-inclusive

Cherwell B Ground Floor



Was Sky-Rocket Upholstery, now available from 1st November 2024 (CB G9) – 815 sq.ft. (workshop/store) £1,200/month – all-inclusive





Hangar 15 Offices (Landside)



= available space

Hangar 15 North Side

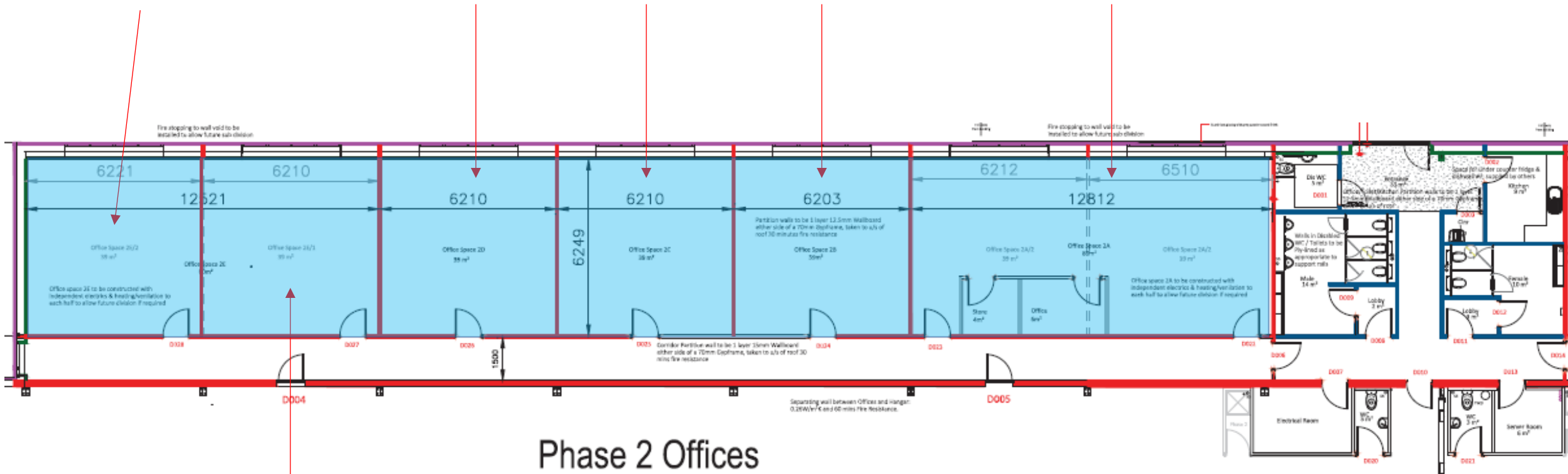
Clay Lacy Aviation
(2E/2) = 420 sq.ft.

P3 Engineering
(2D)

Industriflyg
(2C)

Jetworks
(2B)

Ultimate Warbirds
(2A)



European Aviation
Design Services Ltd
(2E/1) from 1.12.23

ALL NORTH SIDE HANGAR 15
OFFICES CURRENTLY
OCCUPIED



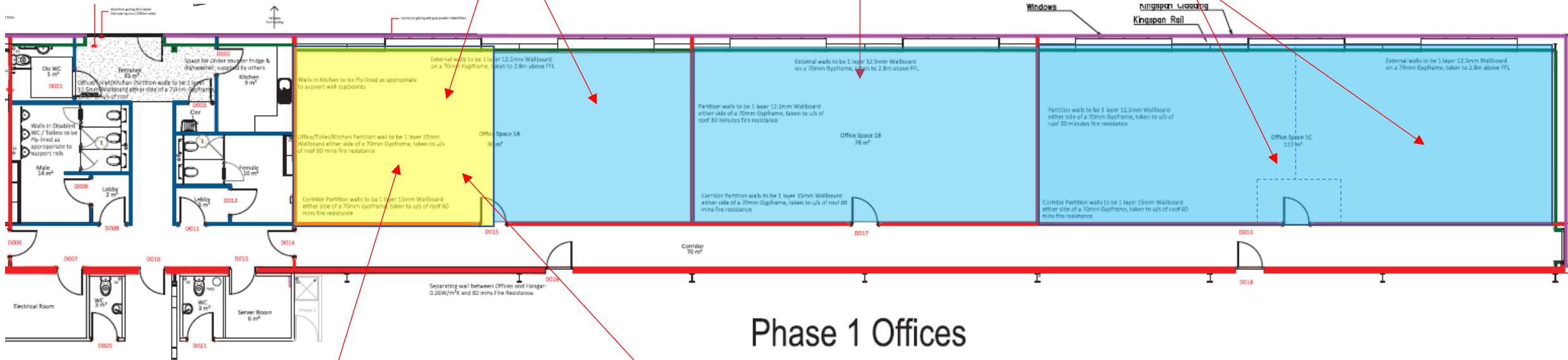
Hangar 15 South Side

NOTE – ALL BRAND NEW SPACE

Half available to rent but Little Jet Co. currently occupying other half (1A) – 969 sq.ft.

OxCCU (Oct. 23) (1B) – 840 sq.ft.

OxCCU (1C) – 1,260 sq.ft.



Phase 1 Offices

**Half 1A = 485 sq.ft. =
£929+VAT/month all-inclusive**

Could possibly be subdivided but prefer not to alter

Using half 1A as pay-per-desk 'hot-desk' shared office environment for individual aircraft owners/pilots/engineers @ £150+VAT/month/desk suite





MCC Building /
Building No. 15
Offices/Stores
(*100% Airside*)

 = available space

Building 15 'MCC Building'

Helicentre from June 22
ex-CAE Sim Hall & Workshops
2,395 sq.ft.



*Set up as 40 seat
lecture hall/training
room!*

Available to Rent
ex-CAE Offices, +40-seat Lecture Room, Store and
Sim Room - Approx. 3,755 sq.ft. (5 main rooms)

Approx. £2,500+VAT/month – TBA Rent Only

***Needs thorough refurbishment/upgrade unless for
basic airside storage only***

**Note – this entire building is airside, therefore access
restricted only to airside pass holders and no
vehicles allowed without airside permits – zero
unescorted visitor access**

Leading Edge Aviation
5,872 sq.ft. (two
floors)

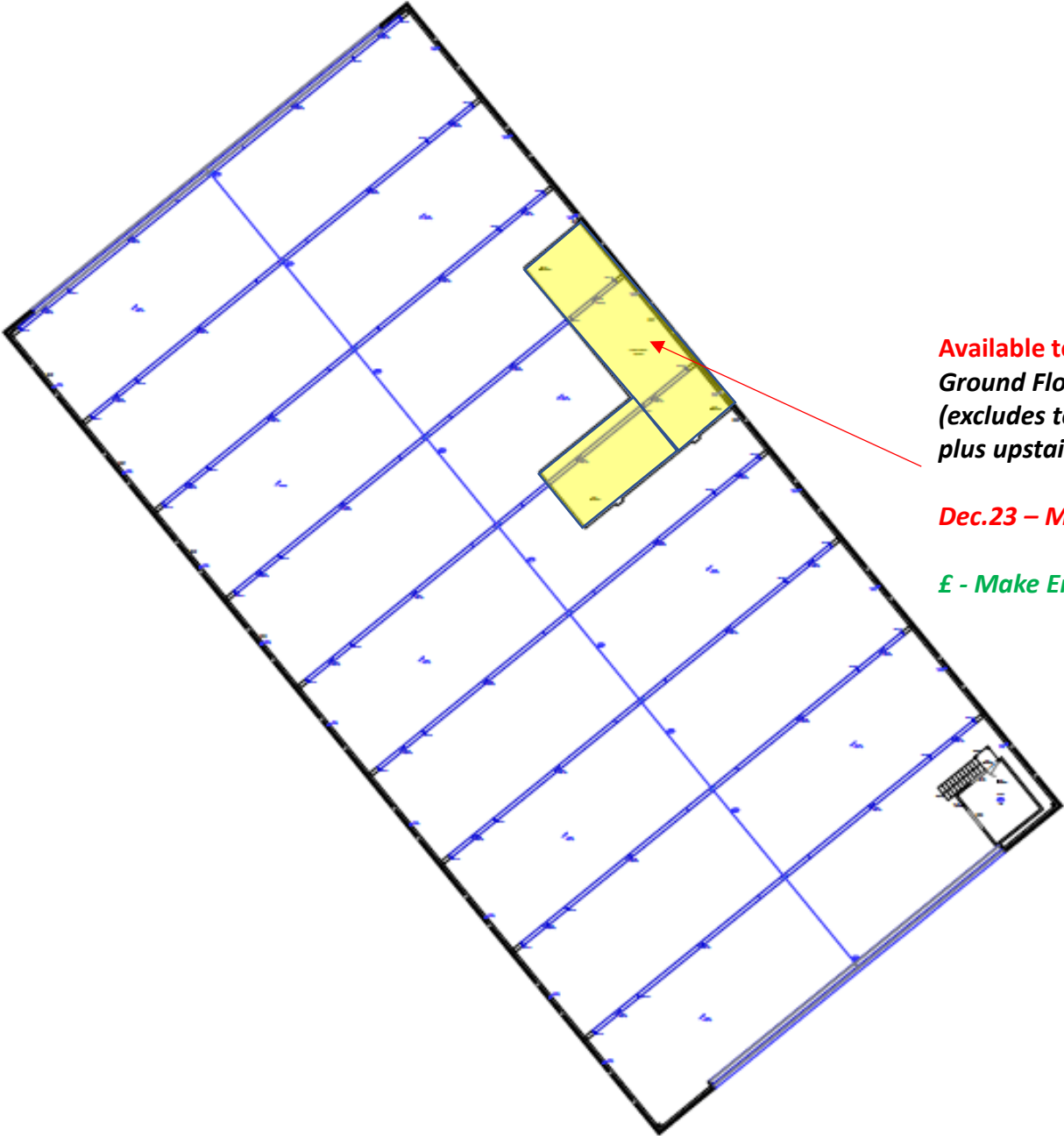
***Portacabin could be separate from
the rest of the building***

Hangar 8 Offices (*Airside*)



= available space

Hangar 8 Offices & Stores

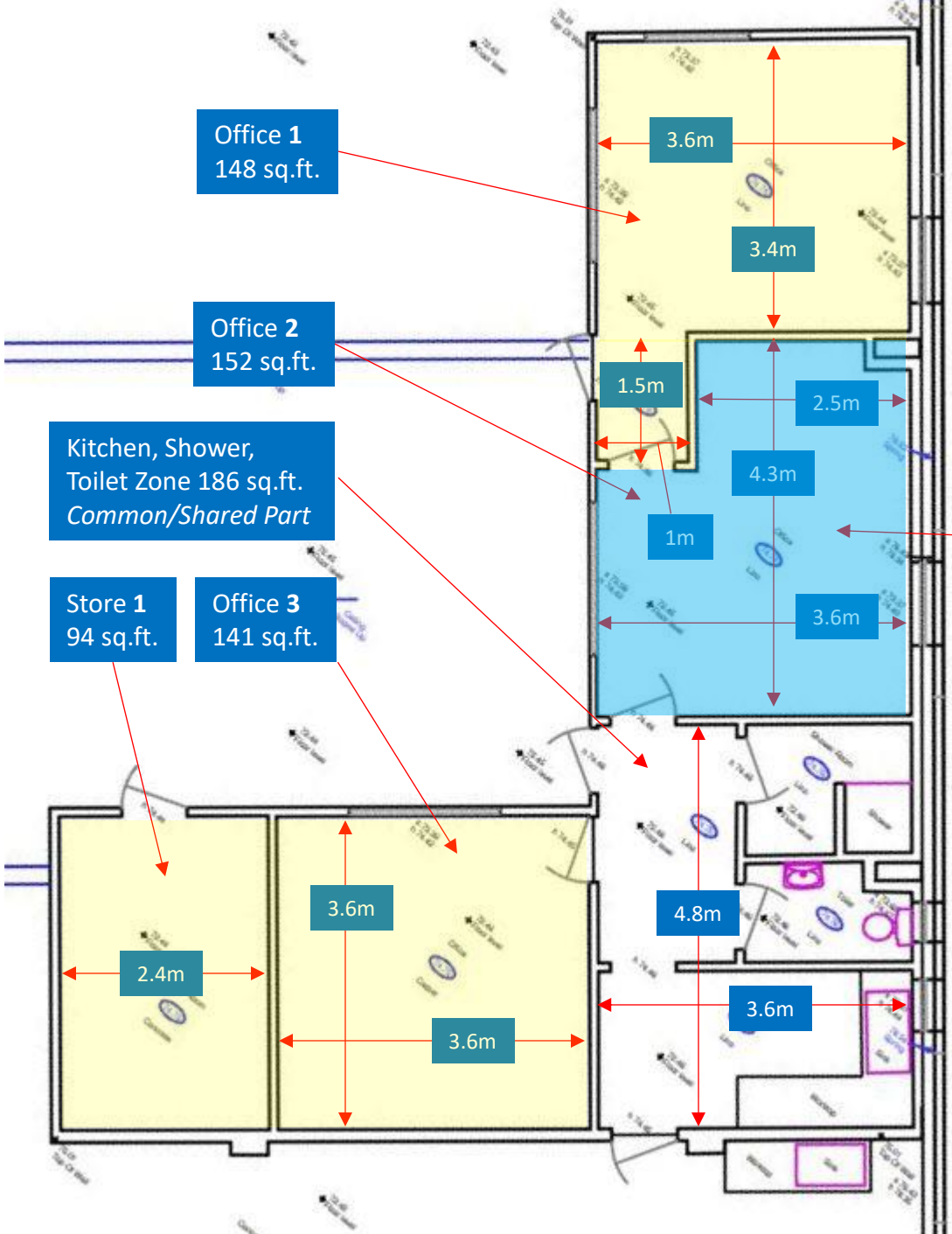


Available to Rent (May 2022)
Ground Floor – 3 x Offices = 441 sq.ft.
(excludes toilet/kitchen/hall space)
plus upstairs store = 279 sq.ft.

Dec.23 – Midland Aircraft Co. have taken an office.

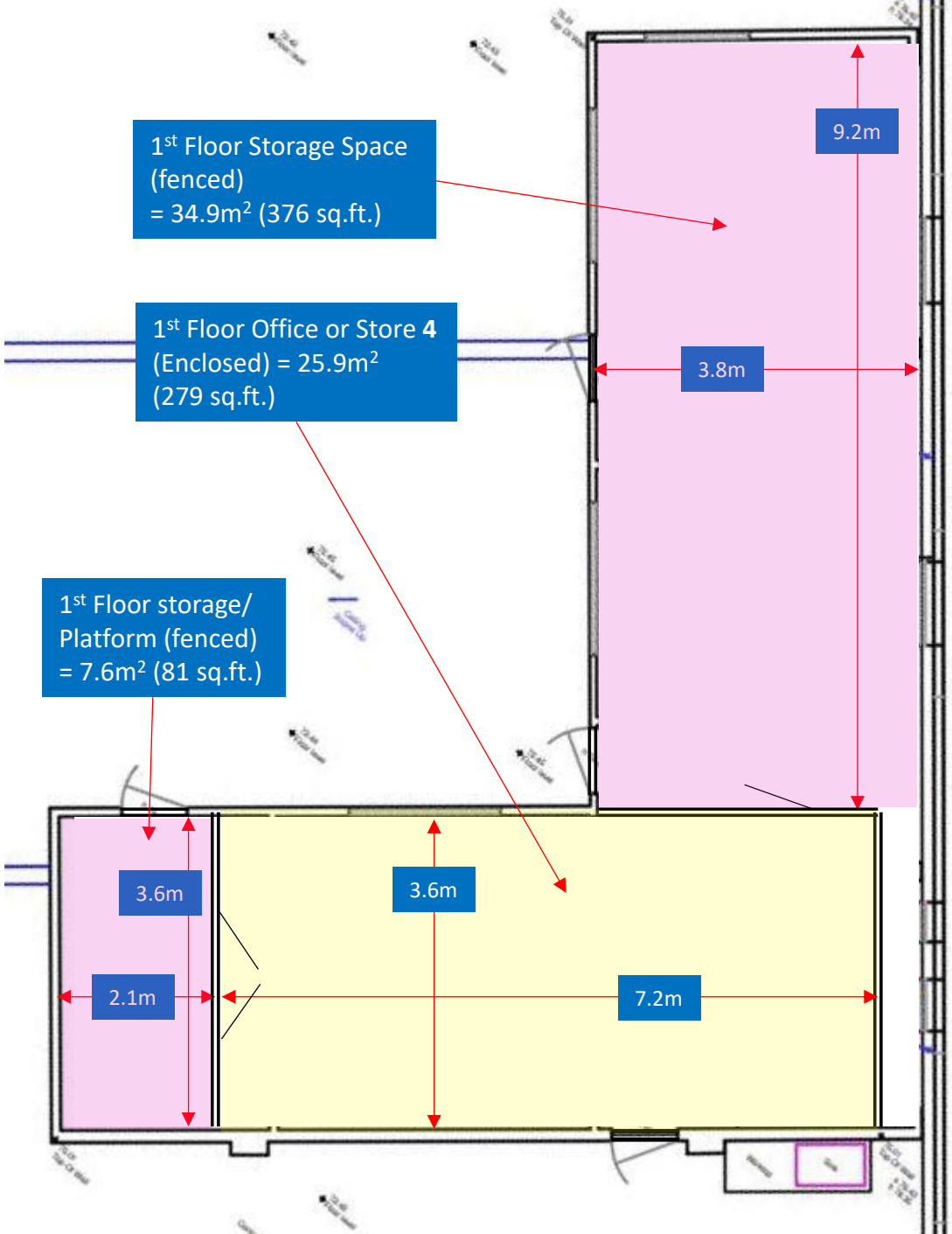
£ - Make Enquiry

Hangar No. 8 Offices & Stores



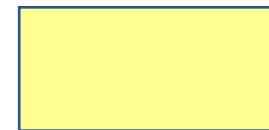
*From Dec.23
– Midland
Aircraft Co.
have office
No.2*

Hangar 8 Offices & Stores





Hangar 10
Ex-Sim Halls
*(Airside or
Landside)*



= available space

Hangar 10 Offices or Stores

Available to Rent

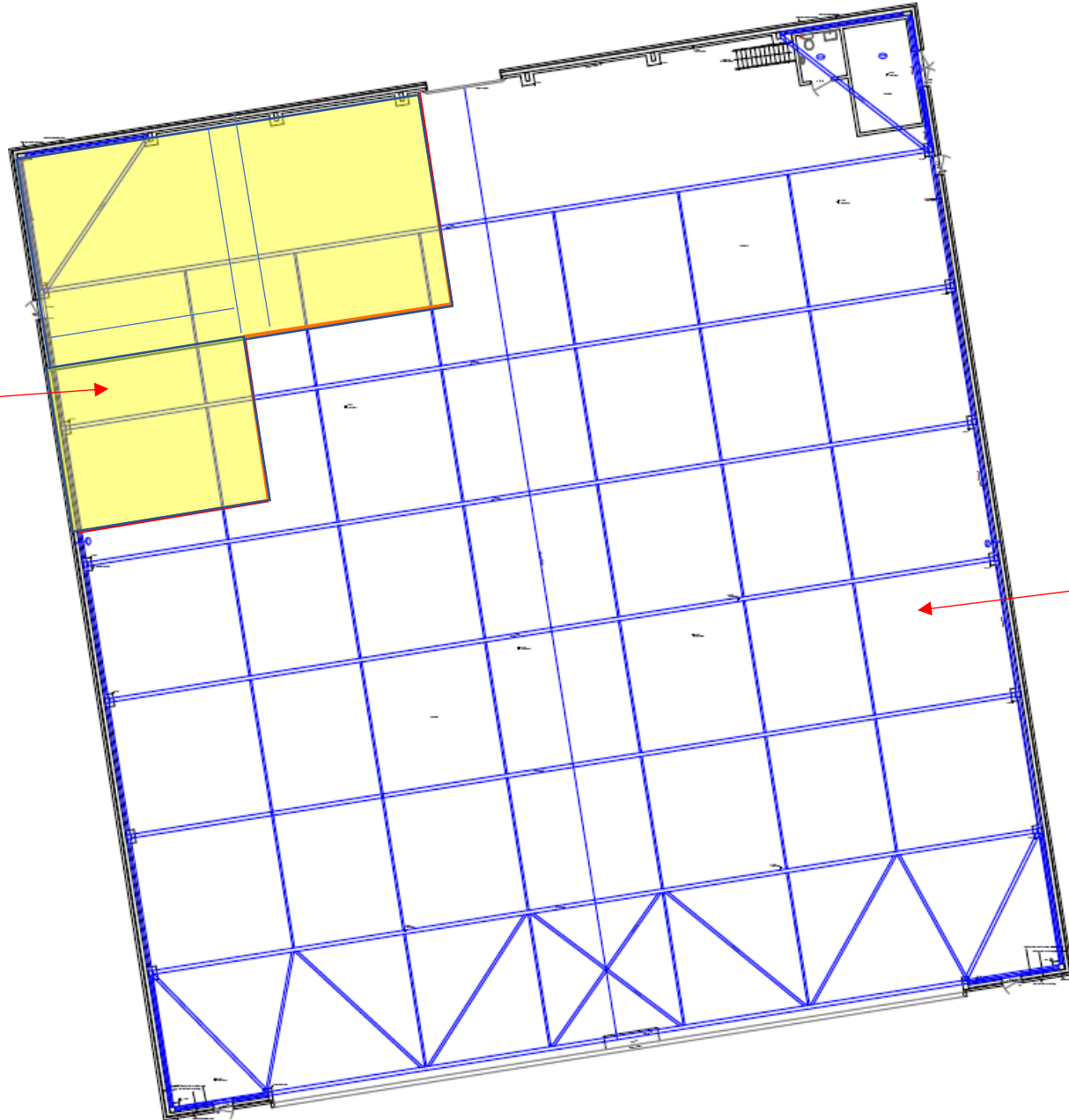
Ex-simulator halls x 3 – convertible into office or storage space – very high ceilings (4.3m) allowing potentially for mezzanine structure (open plan) plus another floor above structure inside hangar

- 2,476 sq.ft. footprint

Can be all Airside or all Landside

Needs total refurb + windows for potential office use however the rooms have modern lighting, air-conditioning and fresh air systems already

£ - Make Enquiry but circa £2,500+VAT/month rent only for whole (3 bays)



Note:

Remaining hangar floor space is 18,812 sq.ft and would be best combined with the 'sim hall' space as a single unit

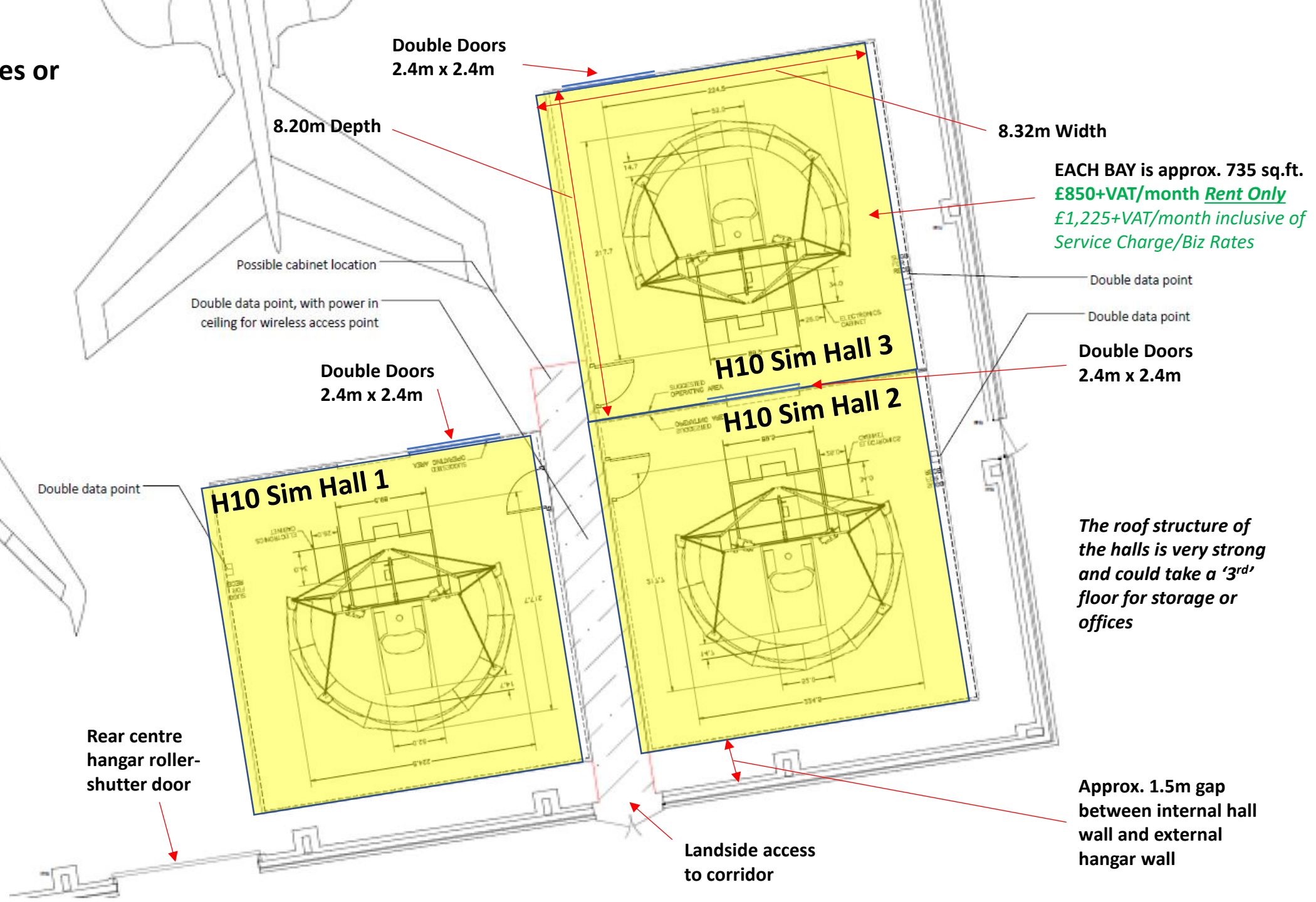
Whole hangar including sim bays would be circa £230K+/annum in rent only

Hangar 10 Offices or Stores

Currently no room has windows either into the hangar or outside but this can be assessed and added

Each Hall has a ceiling height of 4.3m (14 ft) which would allow for internal mezzanine for additional space 'upstairs'

Each hall is approx. 8.32 x 8.2m (734 sq.ft.)





No.6

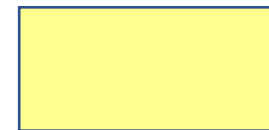
No.7

No.5

No.1

Whole Hangars
potentially available
now:

No.1, No.5, No.s 6 & 7



= available space

Ground Floor

Hangar No. 6 & 7

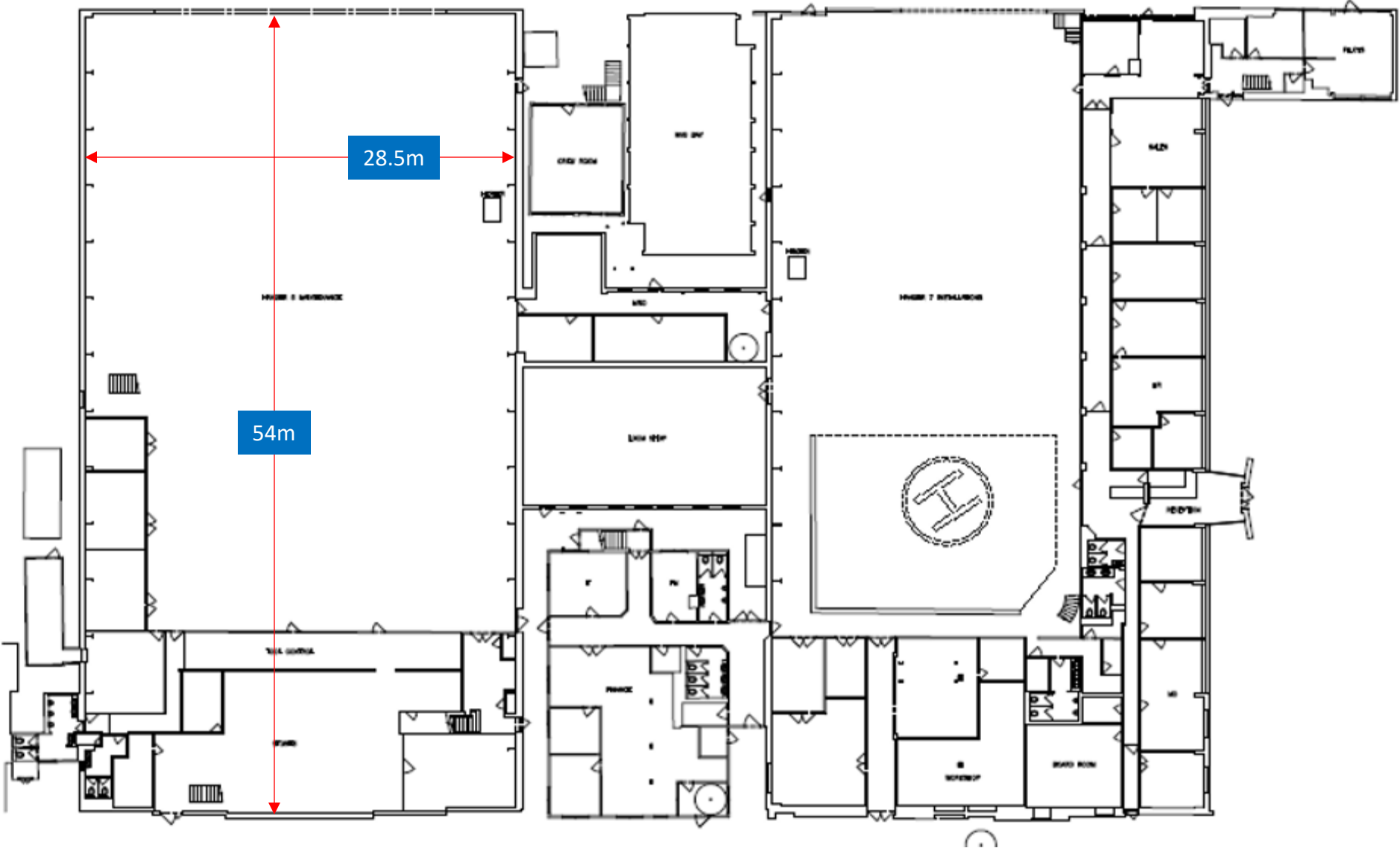
Ex-Airbus Helicopters due back to airport in September 2024

In excess of 57,000 sq.ft.

Subdivision potentially possible, but looking to rent as a whole

High ratio of offices to hangar floorspace with additional stores, workshops etc.

Make enquiry for more information, but circa £500K+/annum in rent only

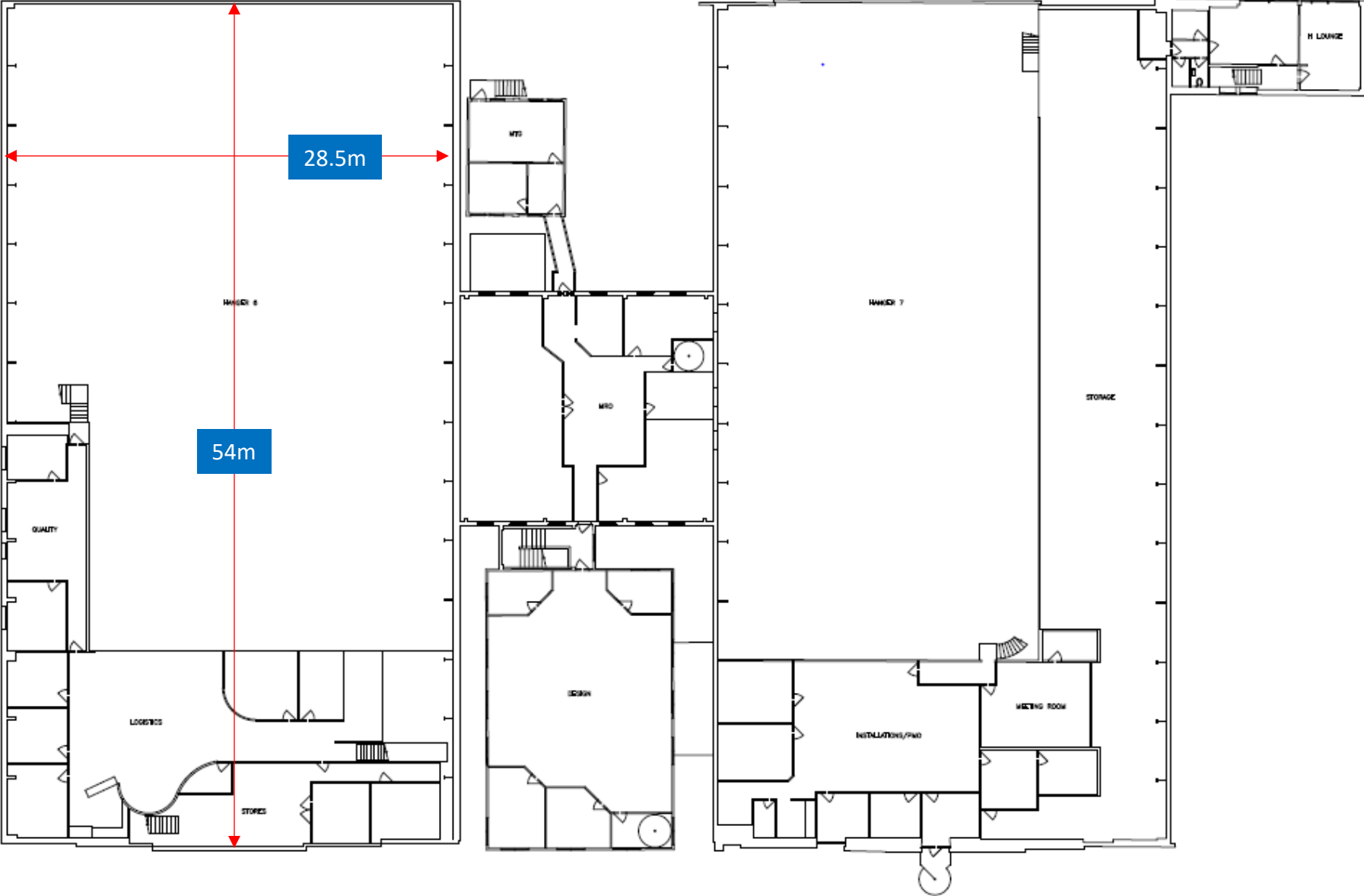


Hangar No. 6 & 7

1st Floor

Make enquiry for more information but circa £500K+/annum in rent Only (whole facility)

First Floor



Hangar No. 5

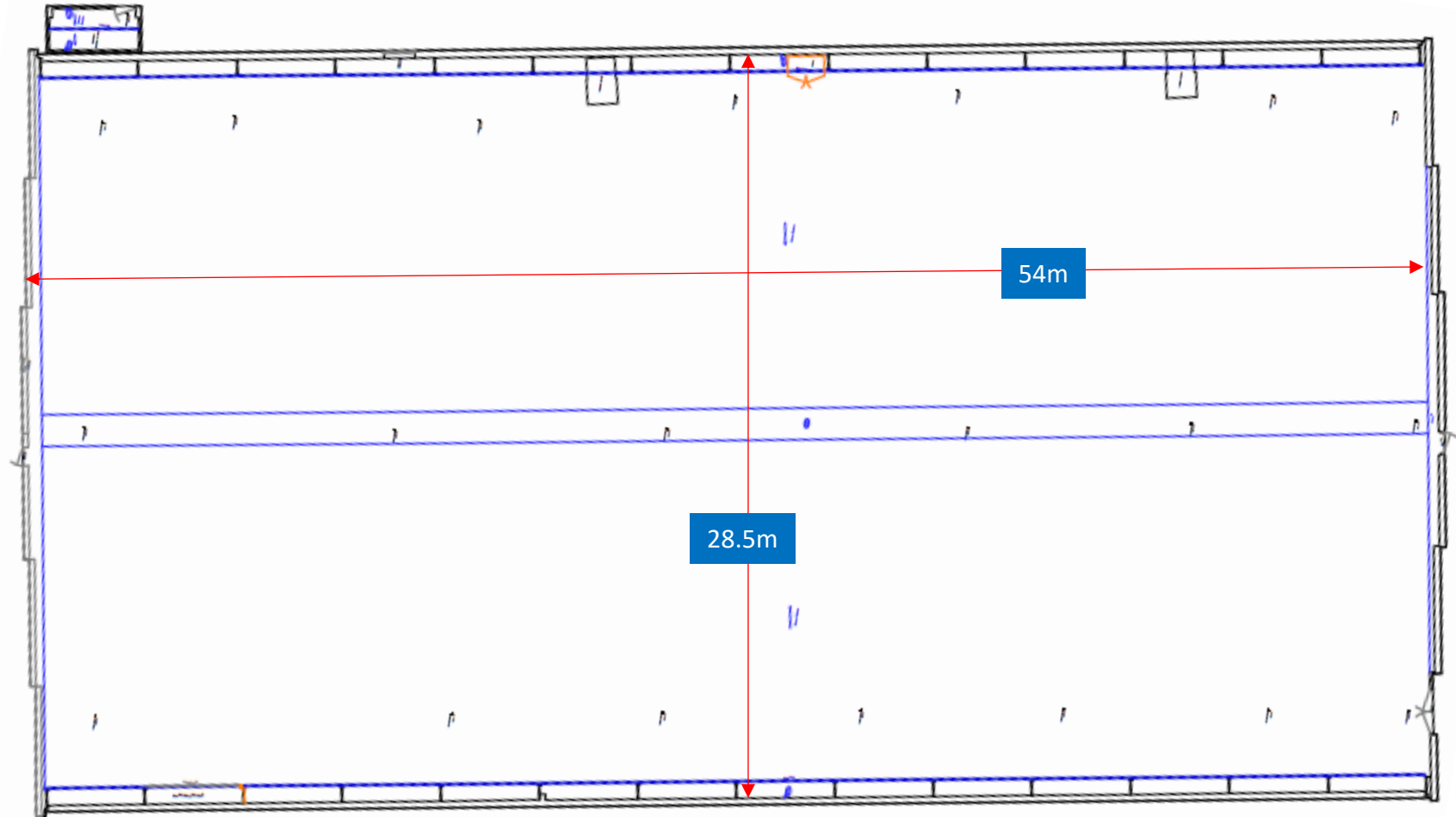
*Ex-Airbus Helicopters
due back to airport in
September 2024*

16,743 sq.ft.

*Airside access south
side, landside access
north side*

*Empty space (i.e. no
offices), suspended
ceiling, LED lighting.
MRO or pure storage.*

***Make enquiry for more
information but circa
£150K+/annum in rent
only***



Hangar No. 1

Ex-CAE due back to airport end 2024 – TBA?

in excess of 20,000 sq.ft.

Airside access south side, landside access north side

Extensively upgraded, refurbished and may vary in final config.
Has own car parking allocation.
Ideal MRO facility.

Make enquiry for more information but circa £250K+/annum in rent only

