

BURNT HICKORY BUSINESS PARK

999 N BURNT HICKORY RD, DOUGLASVILLE, GA 30134



Suites Starting
at \$3,400/Month

Industrial/Flex Buildings For Lease

PROPERTY OVERVIEW

Building Summary

- Year Built/Renovated: 1993/2024
- Available SF: 2,555 to 12,697 SF
- Building SF: 88,901SF
- Zoning: M1 Light Industrial
- Clear Height: 15' to 22'

Property Highlights

- Cross Dock Access
- 3P Electrical Power Available
- Modern LED Lights
- Newly Renovated Office and Warehouse
- Outside Storage Opportunity
- Sprinklered
- 2.00/1,000 Parking Ratio

AVAILABLE SPACES

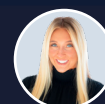
SUITE	UNIT
Suite 12	5,125 SF 2 Drive In and 2 Dock High 20' Clear Height
Suite 16	2,555 SF 1 Drive In and 1 Dock High 20' Clear Height
Suite 20	2,588 SF 1 Drive In and 1 Dock High 20' Clear Height
Suite 21	2,555 SF 1 Drive In and 1 Dock High 20' Clear Height
Suite A	2,662 SF 1 Drive In 20' Clear Height
Suite Q	5,086 SF 2 Drive In and 2 Dock High 20' Clear Height



FOR MORE INFORMATION,
PLEASE CONTACT:



JOSH YAO
678.620.7102
josh@riseprop.com



REILLY KATZ
404.435.546
reilly@riseprop.com

