

Copy Shall Be of Inspectors copy
Site FOR ALL INSPECTIONS

Site Copy
ON 7-30-09
6/15/09

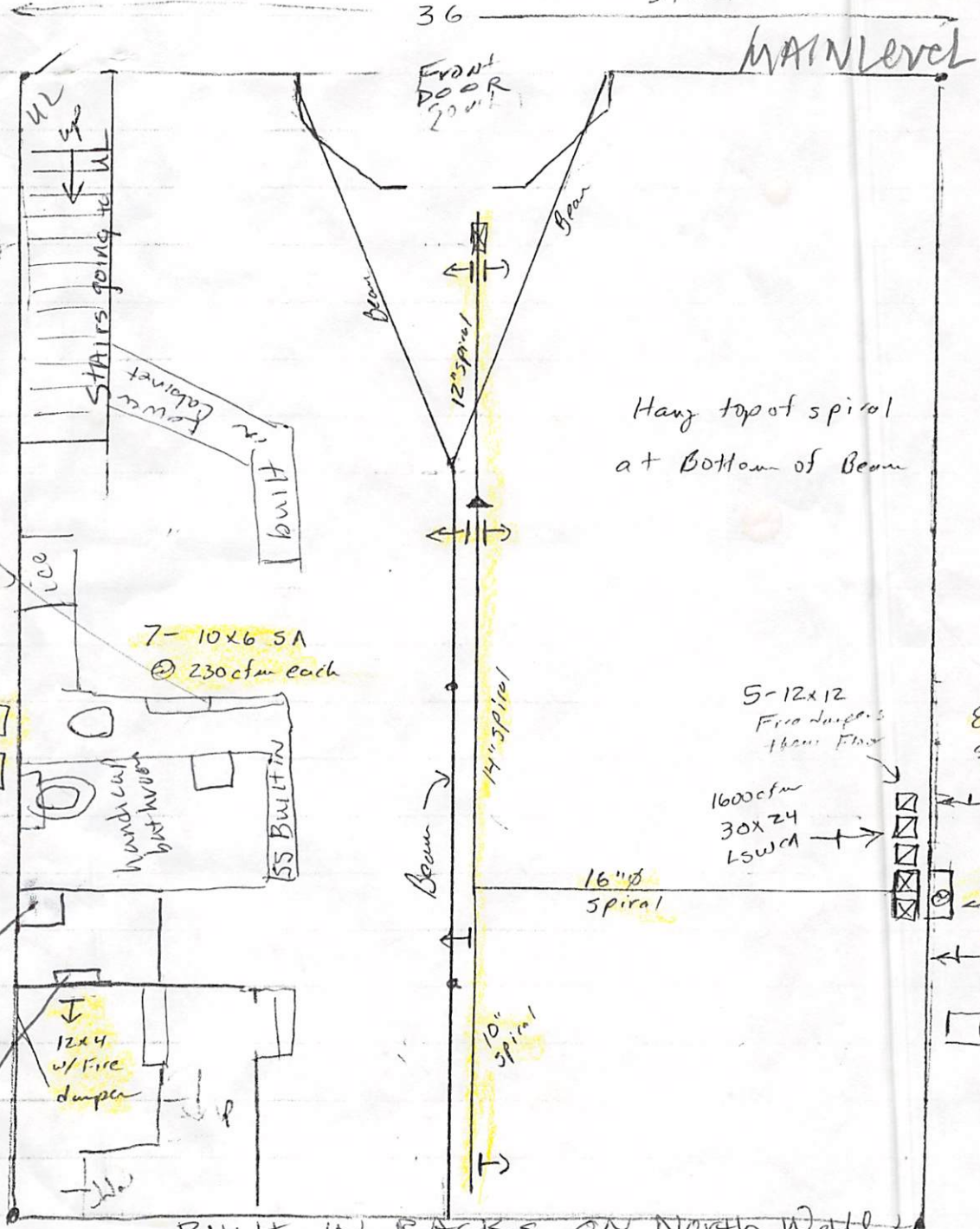
Job # 9030 "2347"

Fisher S

224 W. Elm St

Young American Street

1st floor



11'9" to sup ch
20' more to SR ch

All SWX cooler

5'

2 new A/C's

470W
40 Amp circuits

3/8 x 7/8 lines

metal mesh
Floor drain
Fiberglass
network

62'

7-10x6 SA
@ 230cfm each

STAIRS going up

Handicap
toilet
built in

Handicap
bath
built in

12x4
w/ Fire
damper

36

Front
door
20' x 11'

Beam

Beam

Beam

Beam

Beam

Beam

MAIN LEVEL

Hang top of spiral
at bottom of beam

5-12x12
Fire dampers
thru floor

1600cfm
30x24
LSWCA

8' above
side walk
10" Fresh
air

16"Ø
Spiral

8" in. new
air

8" round
air

Gas
meter

BUILT IN RACKS ON NORTH WALL

Narrow Aisle

Days Night

NB UPL 100 F 20 B

100m Beam
Firmware

NZA 348C 470W A/C

UBUZ 48FA coil

Bldg next door

Street

S

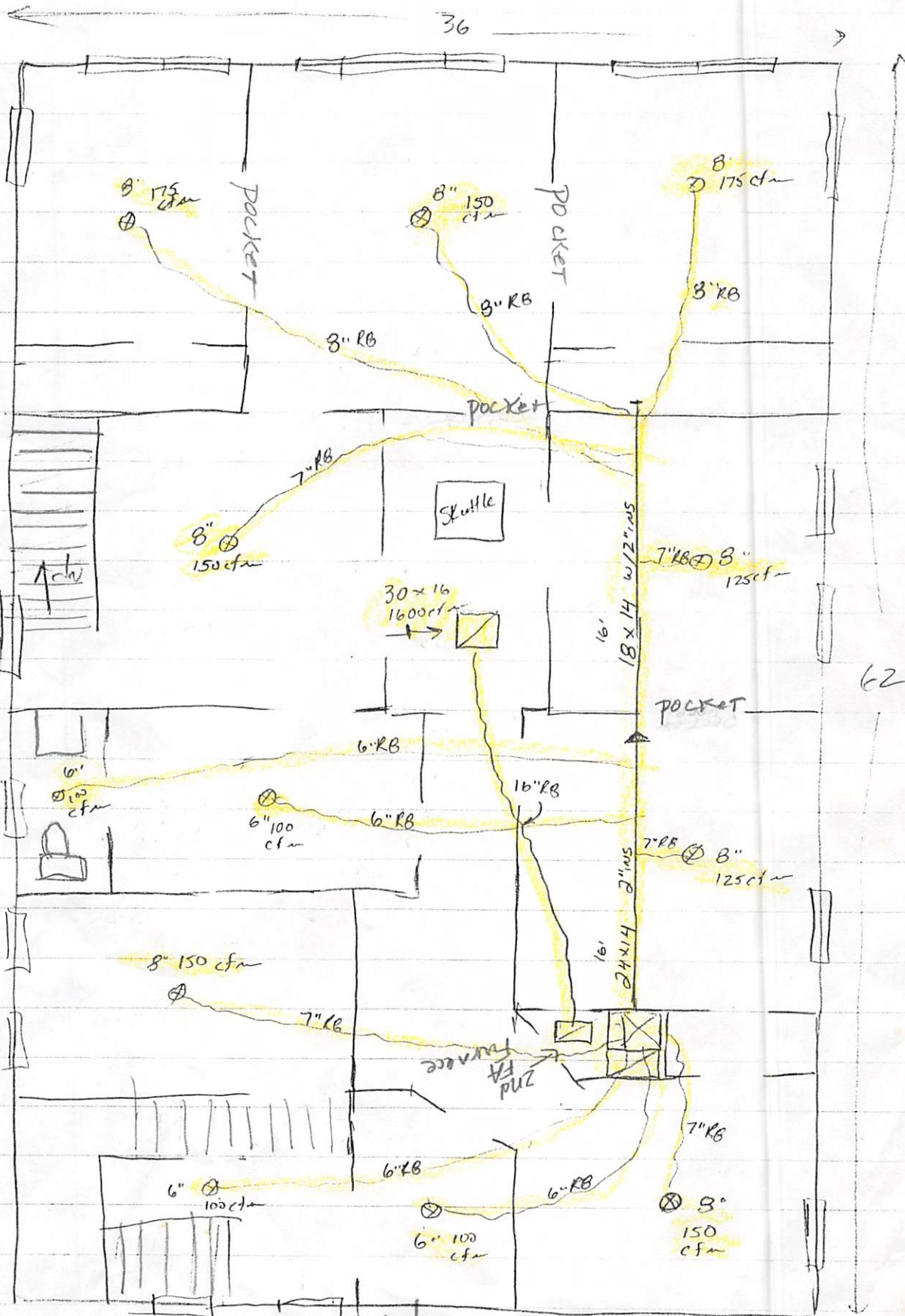
Job # 9030

"2347"

Fisher

221 W. Elm St. Young America

2nd floor



10' cly

2' Attic space
w/ flat roof
above

Skuttle
27 x 23

25" clear
above

Day & Night

NBM PL100F 20 B
Furnace 100M Btu

NZA34BC A/C
4 ton

EBU2x4BFA
coil

1" Gas Tile to
2nd floor

Elm N