

# 5060 Spectrum Way

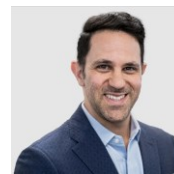
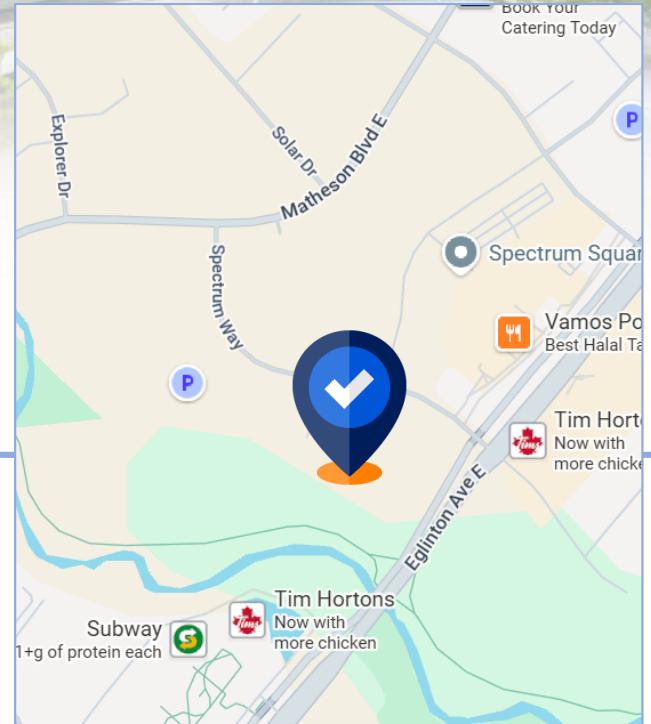
Mississauga, ON

## Sublease Available

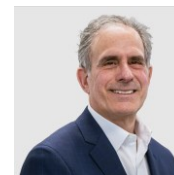
Premises:	Suite 100
Total Rentable Area:	14,625 SF
Net Rent:	Contact Agents
Additional Rent:	\$18.08 (2026 est.)
Available:	60-90 Days
Term:	June 29, 2029

## Features

- Beautifully renovated, with mix of high exposed/t-bar ceilings
- Plug and play for quick occupancy
- Great mix of open workstations and enclosed private areas and open breakout spaces
  - 76 workstations
  - 12 meeting rooms/offices
- Furniture can be included
- Convenient ACC Location, 4-minute walk from Spectrum Station (miWAY)
- Beautiful views of the Etobicoke Creek and access to its walking trail



**Mark Titleman**  
Principal,  
Sales Representative  
416.847.6219  
mtitleman@cresa.com

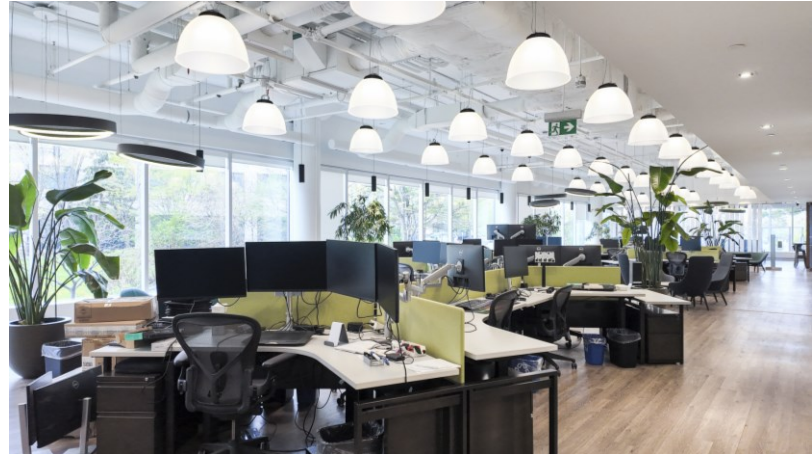
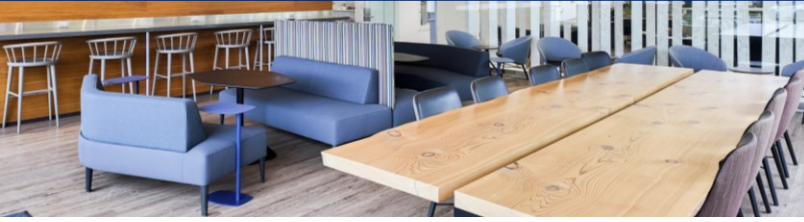


**Dean Newman**  
Principal,  
Broker of Record  
647.286.7171  
dnewman@cresa.com

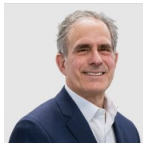


Even though obtained from sources deemed reliable, no warranty or representation, express or implied, is made as to the accuracy of the information herein, and it is subject to errors, omissions, change of price, rental or other conditions, withdrawal without notice, and to any special listing conditions imposed by our principals.

# 5060 Spectrum Way - Mississauga, ON



**Mark Tittleman**  
Principal,  
Sales Representative  
416.847.6219  
mtittleman@cresa.com

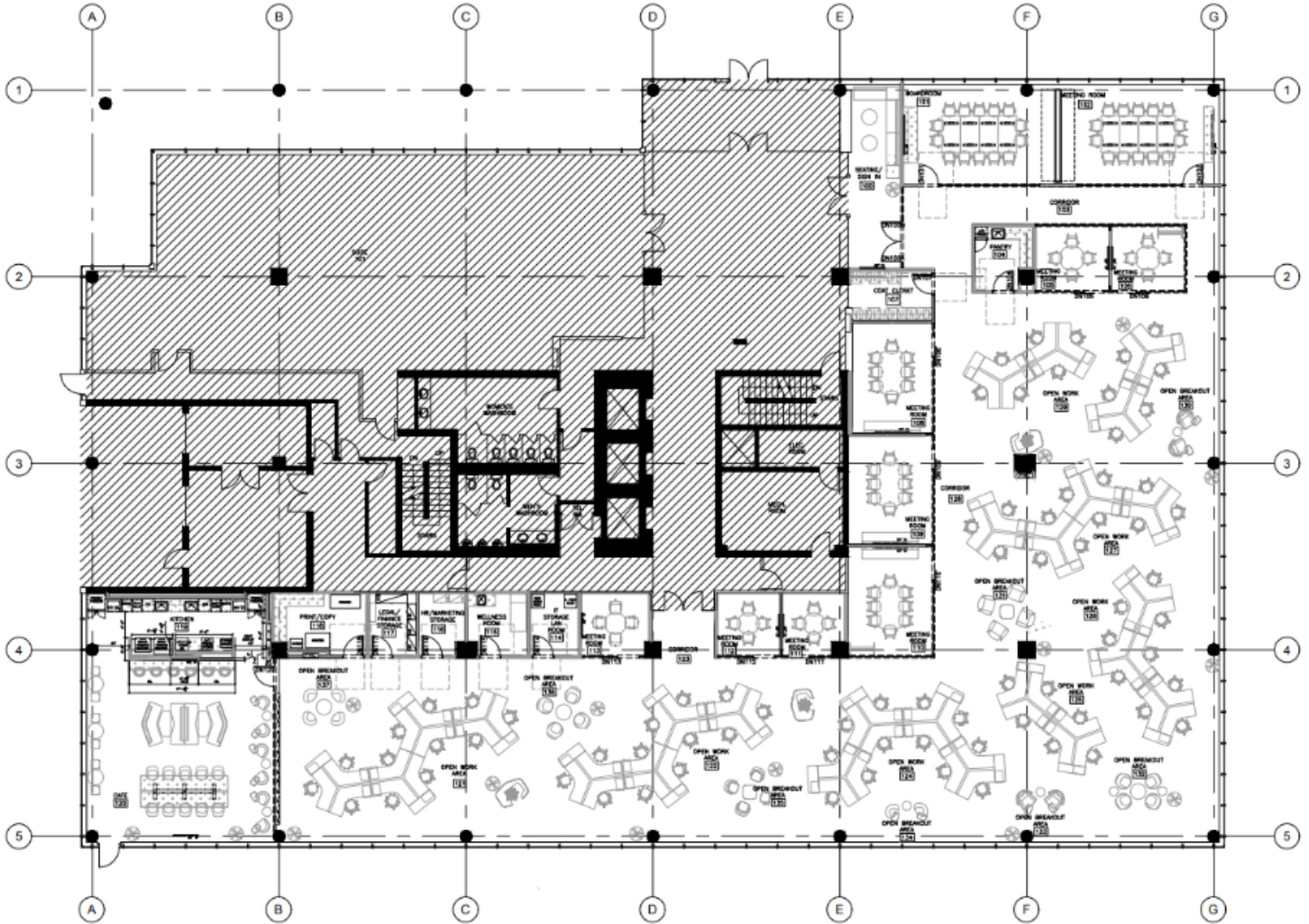


**Dean Newman**  
Principal,  
Broker of Record  
647.286.7171  
dnewman@cresa

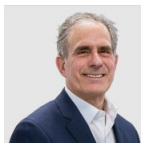
View the  
Virtual Tour



# 5060 Spectrum Way - Mississauga, ON



**Mark Titleman**  
Principal,  
Sales Representative  
416.847.6219  
mtitleman@cresa.com



**Dean Newman**  
Principal,  
Broker of Record  
647.286.7171  
dnewman@cresa

View the  
Virtual Tour

