



CAPITOL
EQUITIES

FOR LEASE

Providing creative commercial real estate solutions since 1997



OFFICE | 3,600 SF

GRANDVIEW

1025 DUBLIN ROAD, COLUMBUS, OH 43215

ED FELLOWS

VP Brokerage
614.760.5660 x123
efellows@capitolequities.com



Property Description

Office Suite available at the intersection of Dublin Road and Waterman Drive. Attractive building with great presence, including exterior signage, and accessibility via the lighted intersection to Grandview Crossing.

Property Highlights

- This available office suite overlooks Dublin Road at the lighted intersection to Grandview Crossing, with the Little Grand and several restaurants in easy walking distance
- Updated in 2021, the office provides an updated, flexible layout for your office operations
- Experience all of the amenities Grandview Crossing has to offer at a fraction of the office rents
- Easily accessible central location with quick highway access via I-670, adjacent to Grandview and Upper Arlington, and just moments from downtown Columbus via Dublin Road (Route 33)
- Great, large exterior signage options
- Ample on-site parking

Location Description

Located on Dublin Road at the new, lighted intersection into Grandview Crossing. Great exposure and accessibility with easy access to I-670, and immediate access to Grandview, Upper Arlington and downtown Columbus via Dublin Road.

OFFERING SUMMARY

Available SF:	3,600 SF
Lease Rate:	\$18 SF/yr
Op. Exp.:	\$4.25 /SF
Utilities:	Paid by Tenant

ED FELLOWS

VP Brokerage
614.760.5660 x123
efellows@capitolequities.com

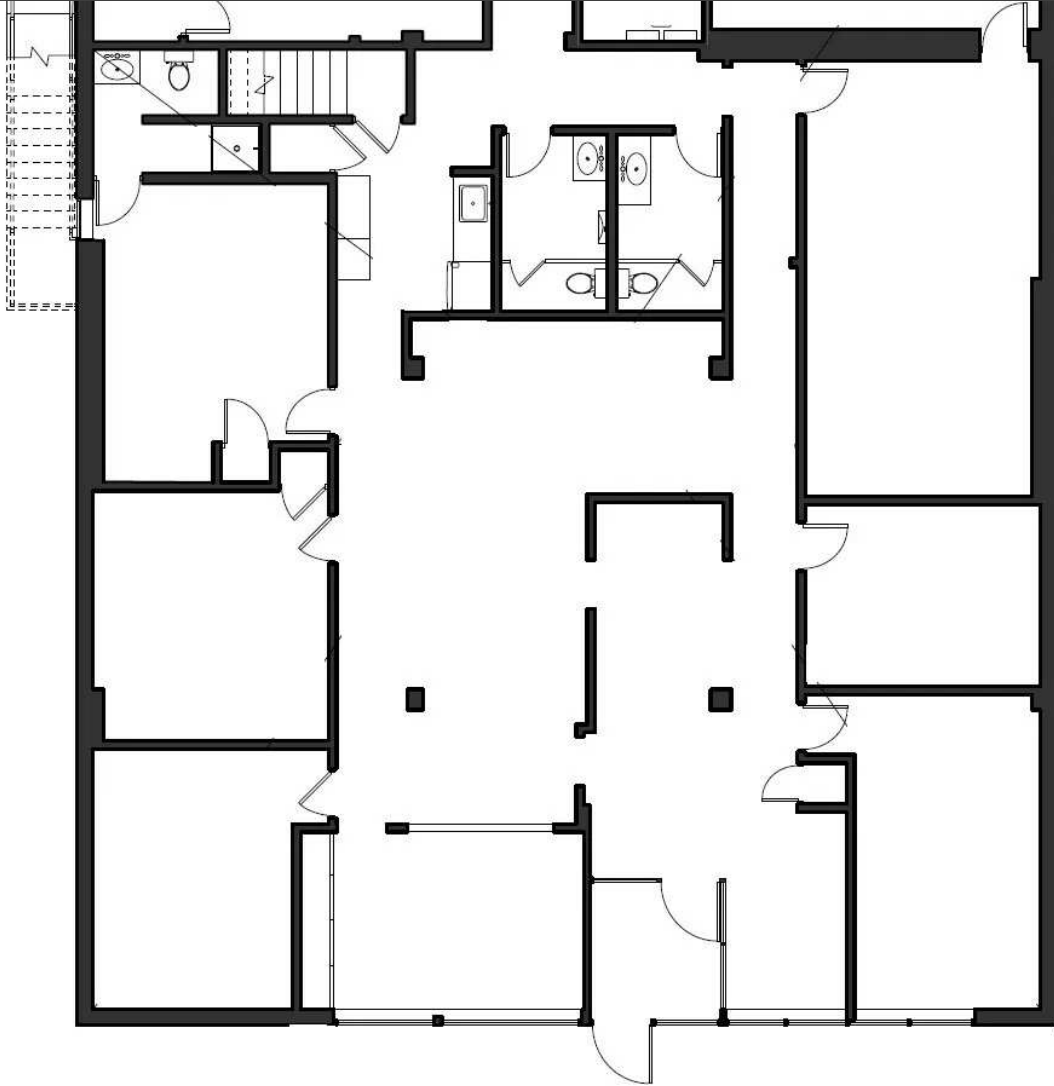
CAPITOLEQUITIES.COM



CAPITOL
EQUITIES

FOR LEASE | OFFICE
GRANDVIEW

1025 DUBLIN ROAD, COLUMBUS, OH 43215



Available Suite

SIZE (SF)	LEASE RATE	DESCRIPTION
■ 3,600 SF	\$18.00 SF/yr	Large offices, plus open work area/conference room and private meeting rooms

ED FELLOWS

VP Brokerage
614.760.5660 x123
efellows@capitolequities.com

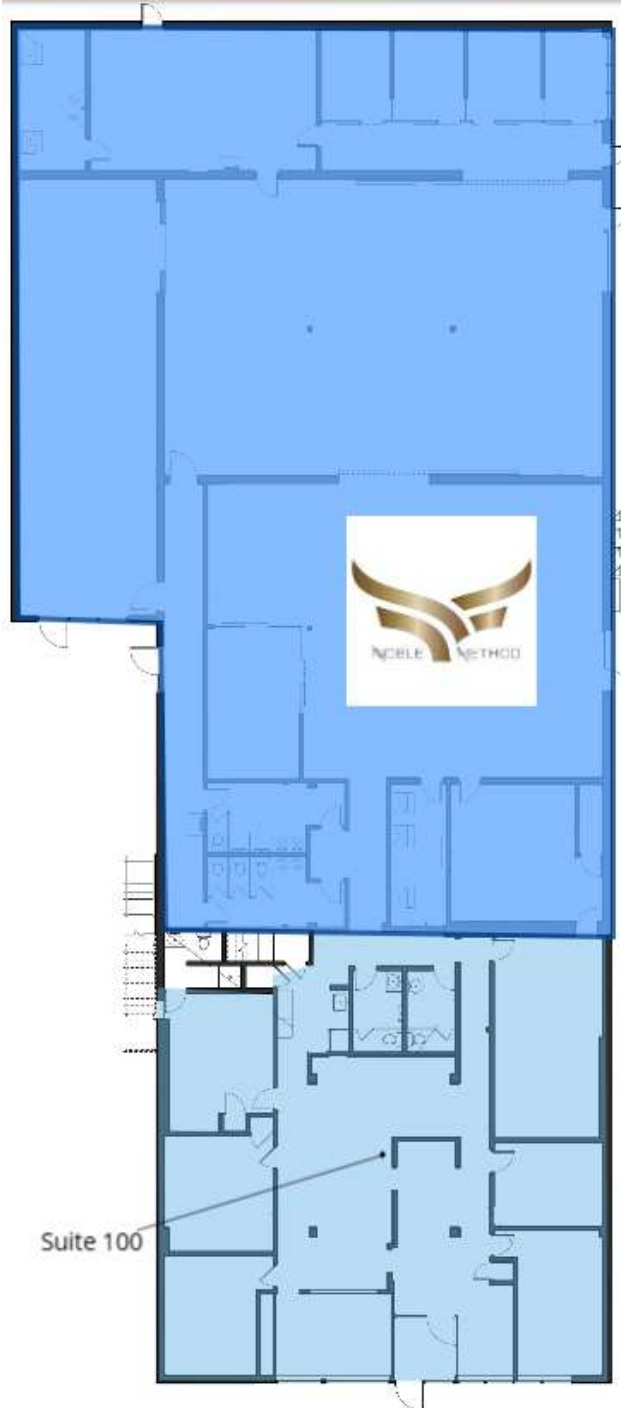
CAPITOLEQUITIES.COM



CAPITOL
EQUITIES

FOR LEASE | OFFICE GRANDVIEW

1025 DUBLIN ROAD, COLUMBUS, OH 43215



ED FELLOWS

VP Brokerage

614.760.5660 x123

efellows@capitolequities.com

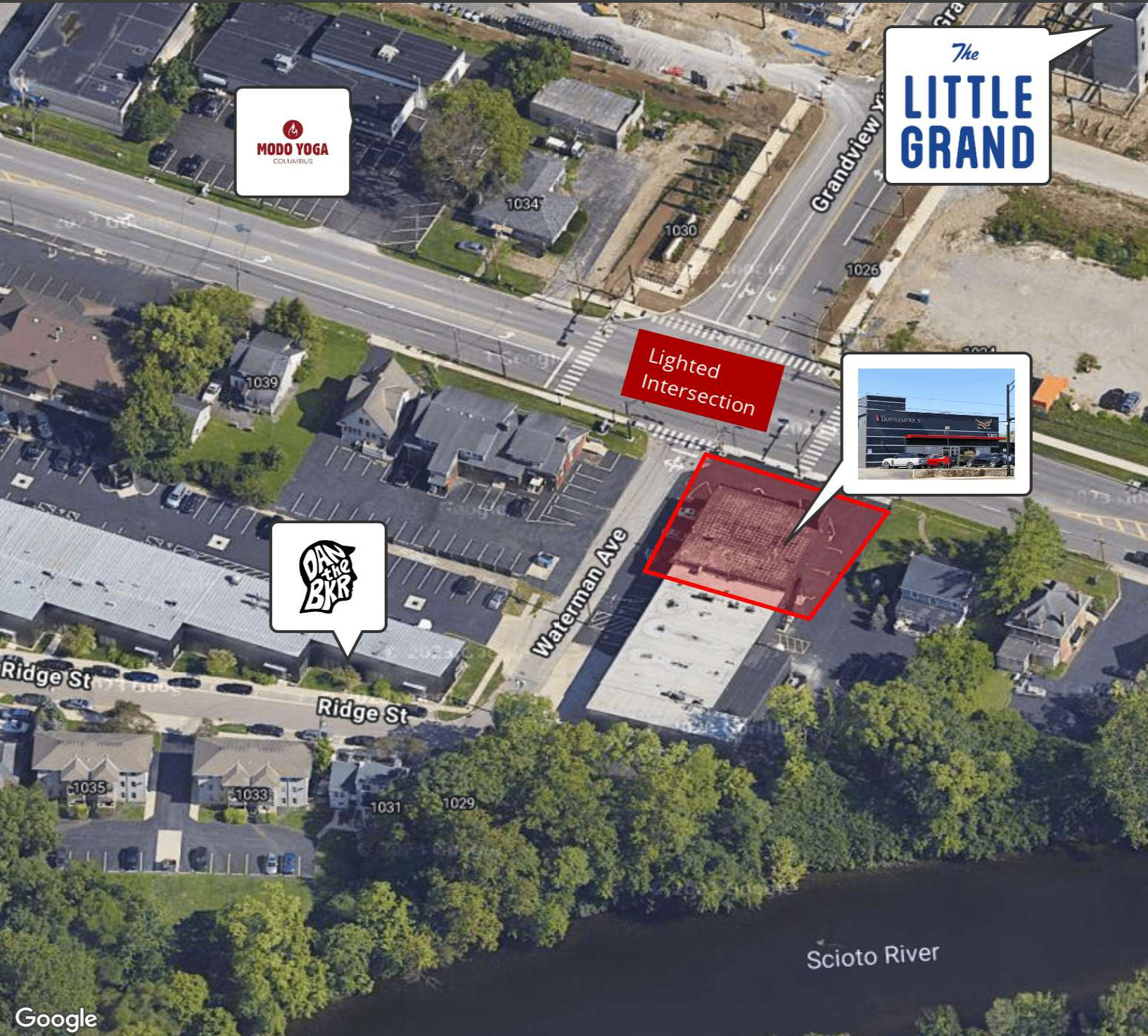
CAPITOLEQUITIES.COM



CAPITOL
EQUITIES

FOR LEASE | OFFICE GRANDVIEW

1025 DUBLIN ROAD, COLUMBUS, OH 43215



Lighted
Intersection



Google

ED FELLOWS

VP Brokerage
614.760.5660 x123
efellows@capitolequities.com

CAPITOLEQUITIES.COM



CAPITOL
EQUITIES

FOR LEASE | OFFICE GRANDVIEW

1025 DUBLIN ROAD, COLUMBUS, OH 43215



Google

Map data ©2026 Google Imagery ©2026 Airbus, CNES / Airbus, Maxar Technologies, USDA/FPAC/GEO

ED FELLOWS

VP Brokerage
614.760.5660 x123
efellows@capitolequities.com

CAPITOLEQUITIES.COM