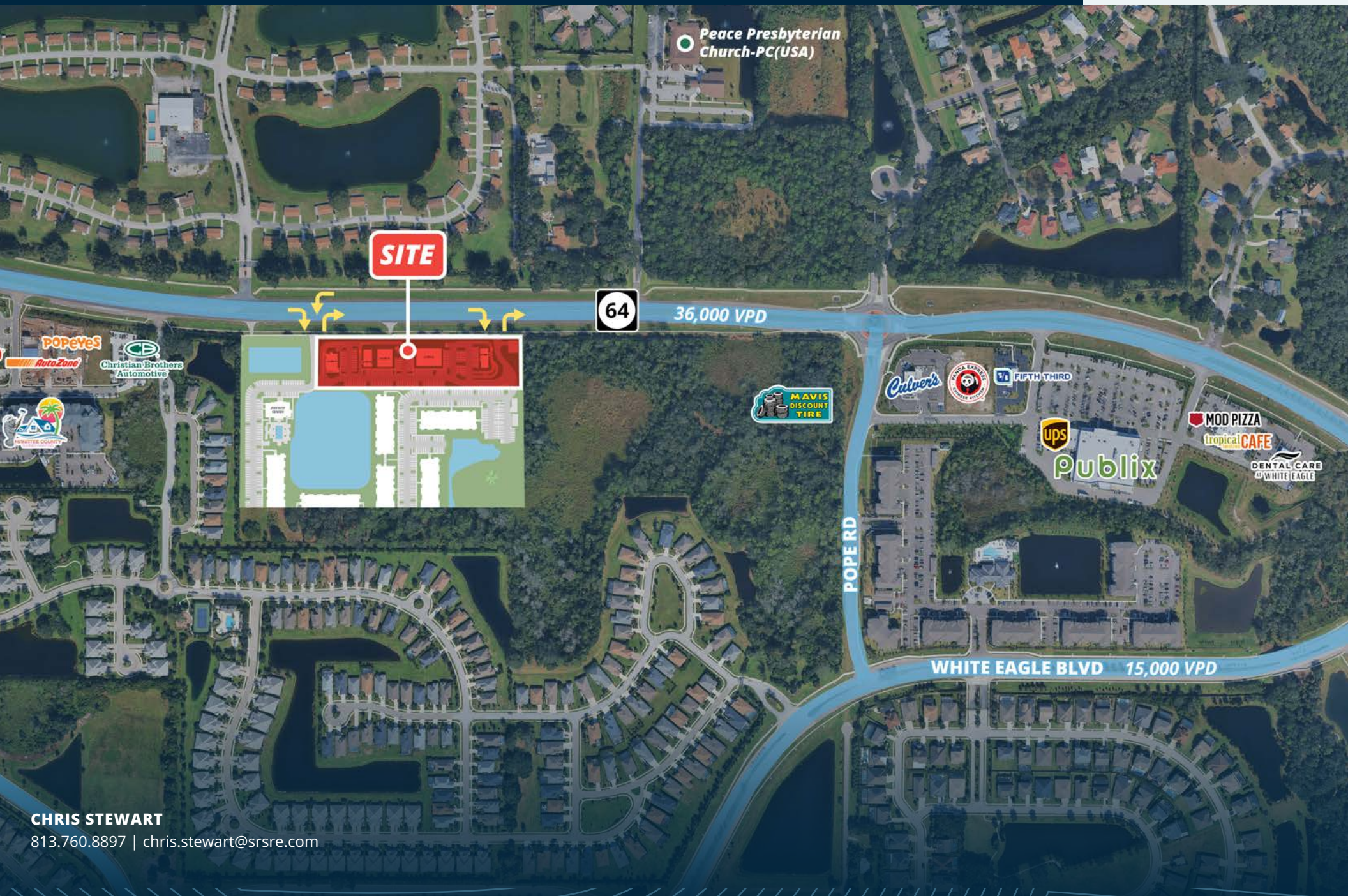


The Shops at Eventide for Lease

SR-64 & Pope Rd. | Lakewood Ranch, FL



SITE

64

36,000 VPD

POPERD

WHITE EAGLE BLVD 15,000 VPD

CHRIS STEWART

813.760.8897 | chris.stewart@srsre.com



The Shops at Eventide for Lease

SR-64 & Pope Rd.
Lakewood Ranch, FL

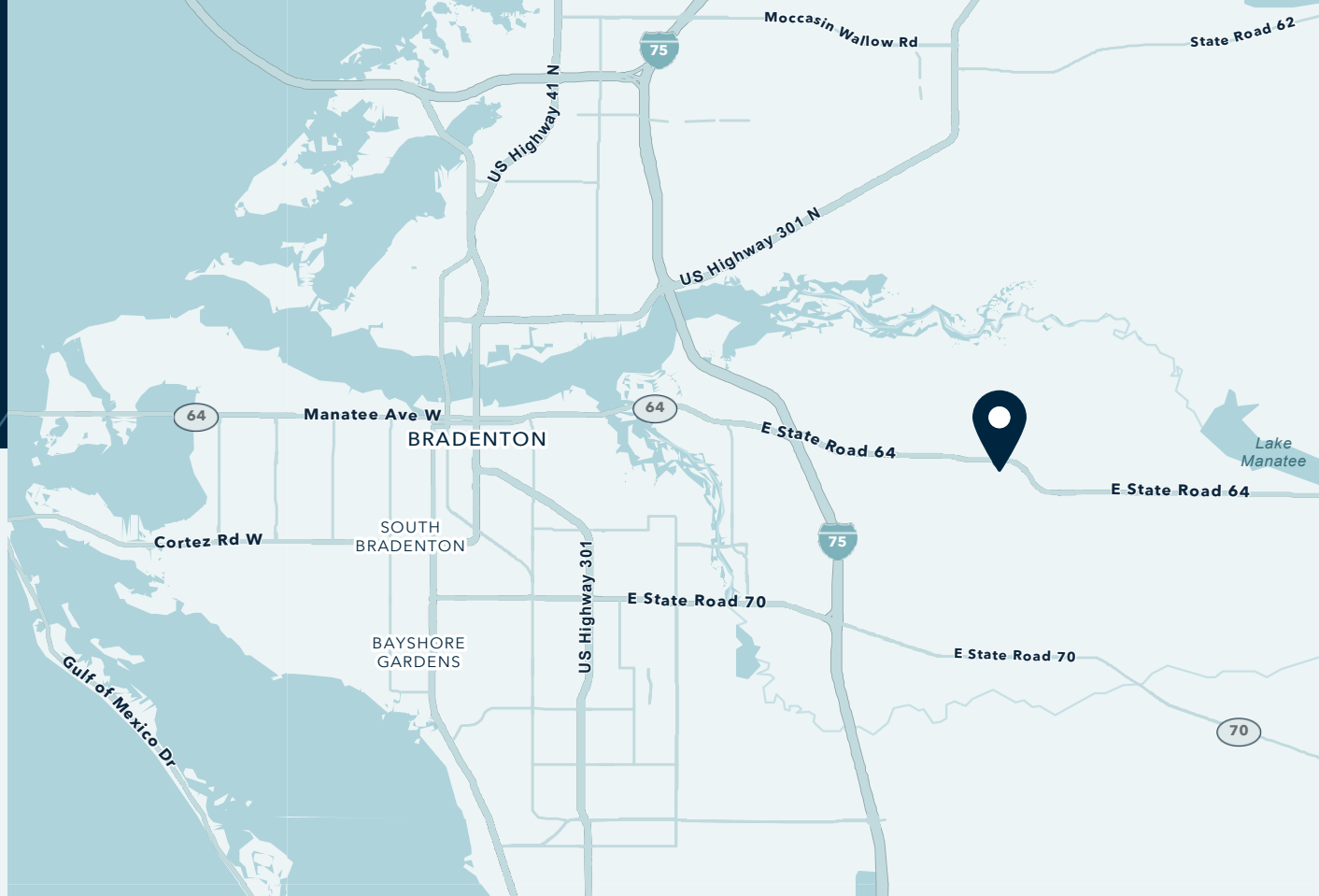
Property Specifications

SIZE

3.25 AC

ZONING

PD-MU (Planned Development –
Mixed Use)



About the Property

- 3.25-acre retail site fronting 294 new multifamily units
- Ideal for drive-thru/QSR, banks, sit-down restaurants, medical or traditional outparcel users (where permitted)
- Prime SR-64 frontage, 3.25 miles from I-75
- Between two Publix centers; near Whole Foods, Costco & Target
- Strong traffic, dense population & high incomes

Traffic Counts

E. State Rd. 64	36,000 VPD
Rye Rd.	16,000 VPD

Source: FDOT

Join these Retailers



CHRIS STEWART
813.760.8897 | chris.stewart@srsre.com



SITE

±3,000 SF

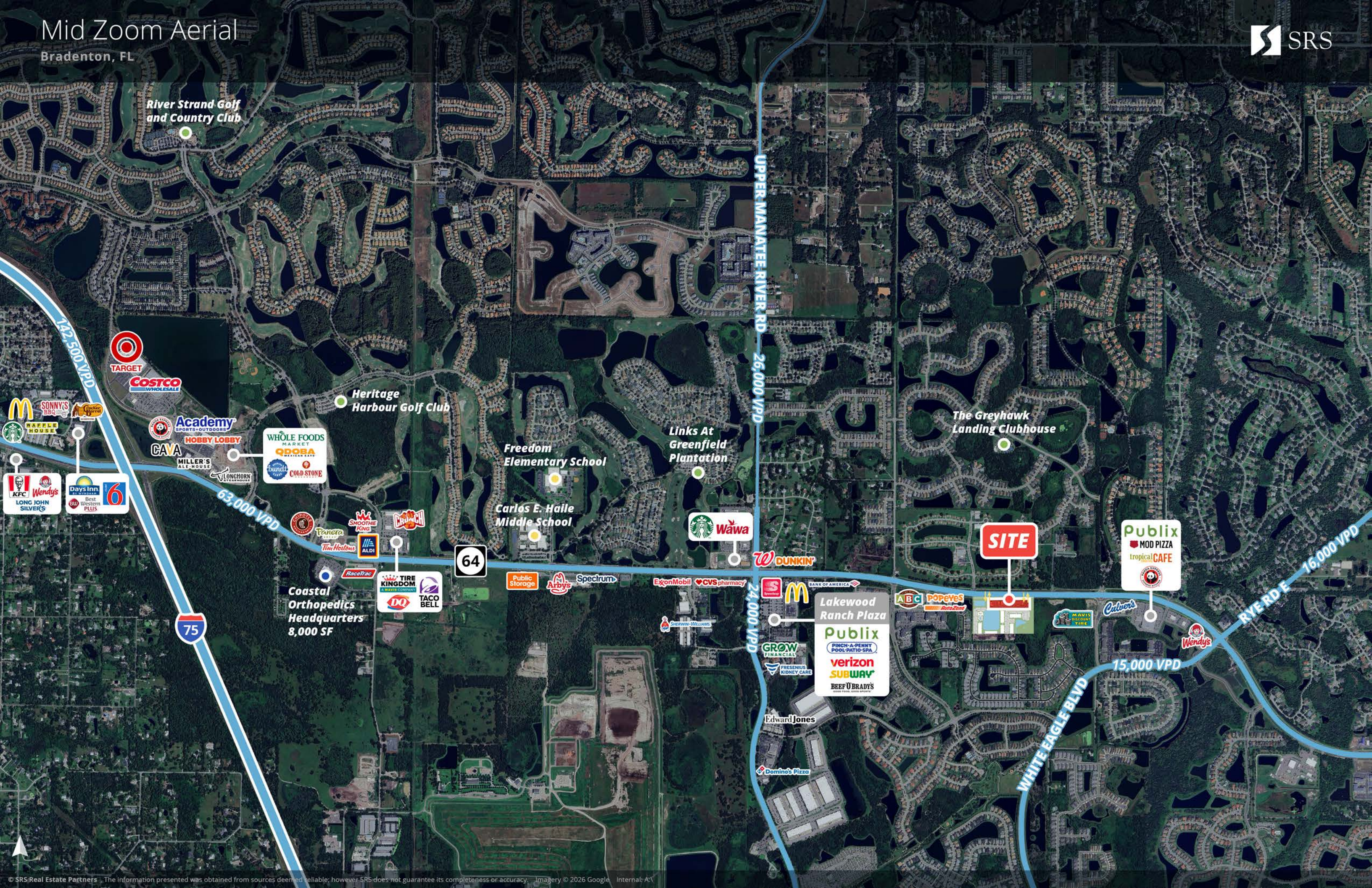
±2,800 SF

±4,200 SF

±7,000 SF

±2,500 SF

**AMENITY
CENTER**



River Strand Golf and Country Club

UPPER MANATEE RIVER RD 26,000 VPD

142,500 VPD

63,000 VPD

RYE RDE 16,000 VPD

15,000 VPD

WHITE EAGLE BLVD

SITE

Heritage Harbour Golf Club

Links At Greenfield Plantation

The Greyhawk Landing Clubhouse

Freedom Elementary School

Carlos E. Haile Middle School

Coastal Orthopedics Headquarters
8,000 SF

Lakewood Ranch Plaza
Publix
verizon
SUBWAY
BEEF 'O BRADY'S

Publix
MOD PIZZA
tropical CAFE

© SRS Real Estate Partners. The information presented was obtained from sources deemed reliable; however SRS does not guarantee its completeness or accuracy. Imagery © 2026 Google. Internal: A\



64

75

70

SITE

Target
Costco Wholesale
Academy Sports + Outdoors
Whole Foods Market
Hobby Lobby
First Watch
Cold Stone
QDOBA
Longhorn Steakhouse
Proposed
Black Rifle Coffee Company
Portillo's
CAVA

Braden River Plaza
Tractor Supply Co
Dollar Tree
Outback Steakhouse
Plato's
Applebee's
Wendy's
KFC

McDonald's
Subway
Waffle House
Sonny's BBQ
Starbucks
Quality Inn
Days Inn

Lakewood Ranch Plaza
Publix
McDonald's
Verizon
Subway
Beef 'O Brats

Creekwood Crossing
Lowes
Bealls
Sky Zone
Dollar Tree
Starbucks
Bob Evans
Freddy's

Lakewood Walk
Publix
McDonald's
Subway
Starbucks
Wendy's

Lockwood Commons
Publix
Pet Supermarket
ACE
First Watch
CVS Pharmacy
Smoothie King
Subway

Walmart
GNC
FAS
Calver's

Publix
McDonald's
Wendy's

R. Dan Nolan Middle School
Gilbert W McNeal Elementary School

Gene Witt Elementary School

Freedom Elementary School

Carlos E. Haile Middle School

William H. Bashaw Elementary

Dr. Mona Jain Middle School

B. D. Gullett Elementary School

Bayside Community Church

Lake Manatee East County K-8 School

Esplanade at Azario Lakewood Ranch Golf Course

Esplanade Golf and Country Club at Lakewood Ranch

Rosedale Golf & Country Club

Braden River High School

Tara Elementary School

Braden River Elementary PTO

Braden River Middle School

Lakewood National Golf Course Club House

Calusa Country Club at Lakewood Ranch



Area Snapshot

1 MILE

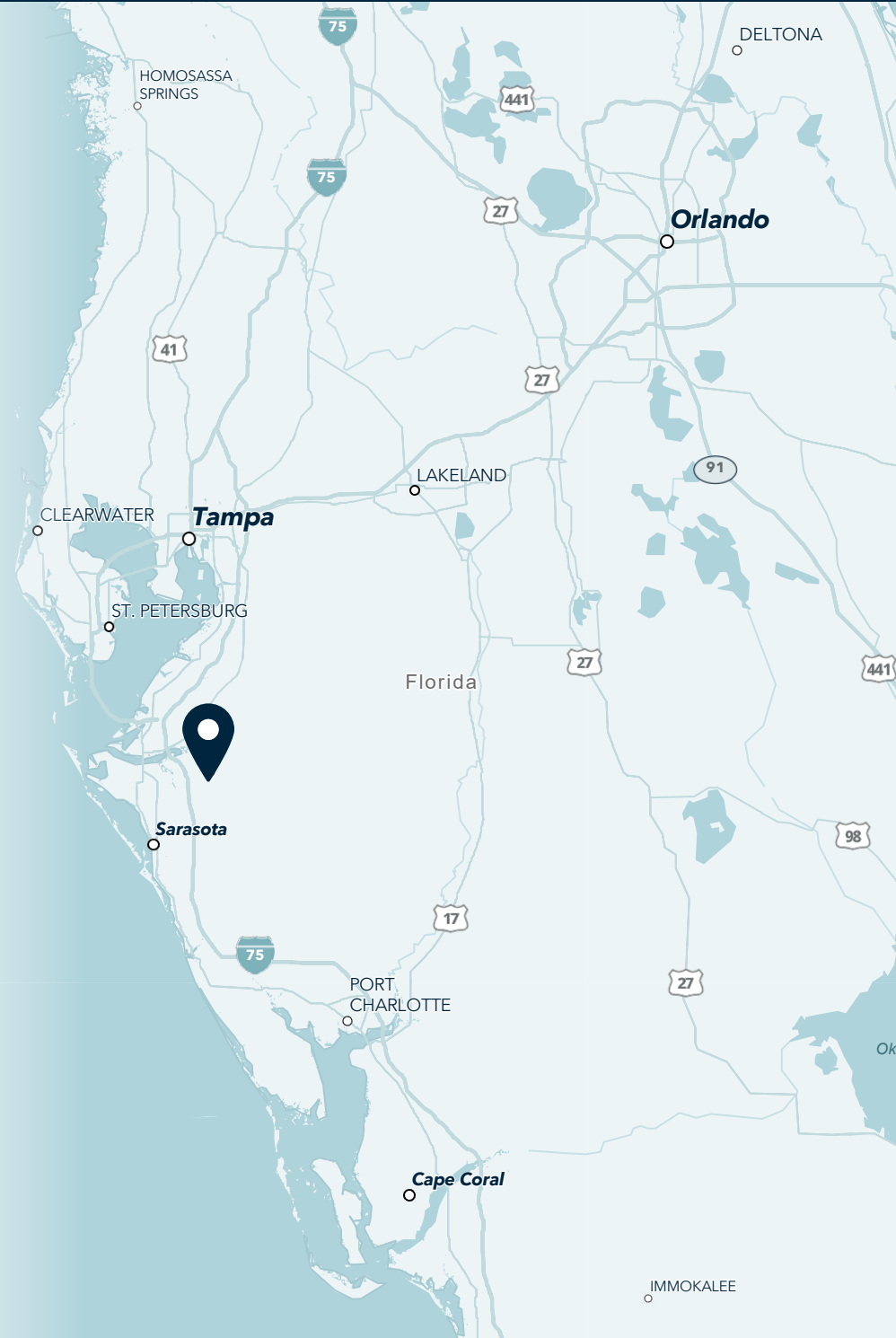
7,167 Population	5,614 Total Daytime Population	\$195,398 Average Household Income	2,634 Total Households
----------------------------	---------------------------------------------	-------------------------------------------------	-------------------------------------

3 MILES

42,667 Population	35,409 Total Daytime Population	\$179,632 Average Household Income	16,716 Total Households
-----------------------------	----------------------------------------------	-------------------------------------------------	--------------------------------------

5 MILES

93,421 Population	77,239 Total Daytime Population	\$169,326 Average Household Income	38,566 Total Households
-----------------------------	----------------------------------------------	-------------------------------------------------	--------------------------------------



Want more? Contact us for a complete demographic, foot-traffic, and mobile data insights report.



SRS REAL ESTATE PARTNERS

1501 W. Cleveland Street, Suite 300
Tampa, FL 33606
813.371.0980

SRSRE.COM

©2026 SRS. All Rights Reserved.

The information presented was obtained from sources deemed reliable;
however SRS does not guarantee its completeness or accuracy.