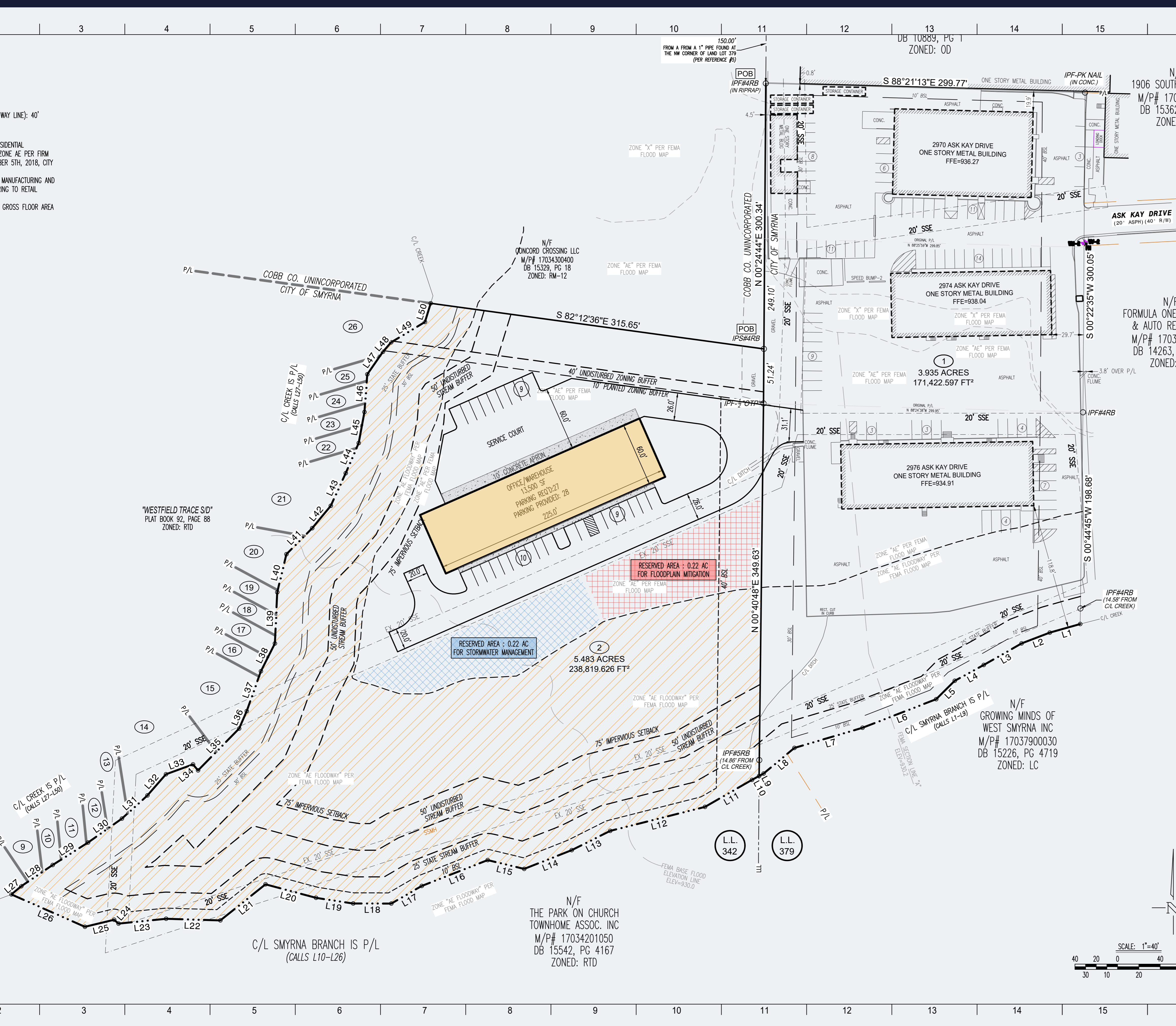


5.48 AC GENERAL COMMERCIAL LAND FOR SALE OR BUILD TO SUIT



Proposed Site Plan #1



*Representative Photo

PROPERTY OVERVIEW

- Smyrna / Cobb County
- 5.48 AC | 2.75 Usable AC
- Zoning: General Commercial (GC)
- Access: Easement via S Cobb Dr
- Utilities to Site
- Raw Land, Rolling Topography

PROPOSED SITE PLAN

- 13,500 SF Flex Warehouse
- 28 Paved Parking Spaces
- 10% Office | 90% Warehouse
- Fully Air Conditioned Building
- 3 Dock Doors & 1 Drive In
- Rear Loading

FOR MORE INFORMATION,
PLEASE CONTACT:



REILLY KATZ
404.435.5460
reilly@riseprop.com



JACK KIMBREL
229.894.8152
jack@riseprop.com

