

FOR SUBLEASE

# LA CHOLLA CORPORATE CENTER

7458 N. LA CHOLLA BLVD. TUCSON, AZ 85741



**6,372 RSF**  
AVAILABLE



# Property Photography



## SUBLEASE PREMISES HIGHLIGHTS



**6,372 RSF**  
PREMISES



**Newly Built Out Space**  
CONDITION



**Negotiable + utilities/janitorial/  
rental tax**  
BASE RENTAL RATE



**May 31, 2027**  
EXPIRATION

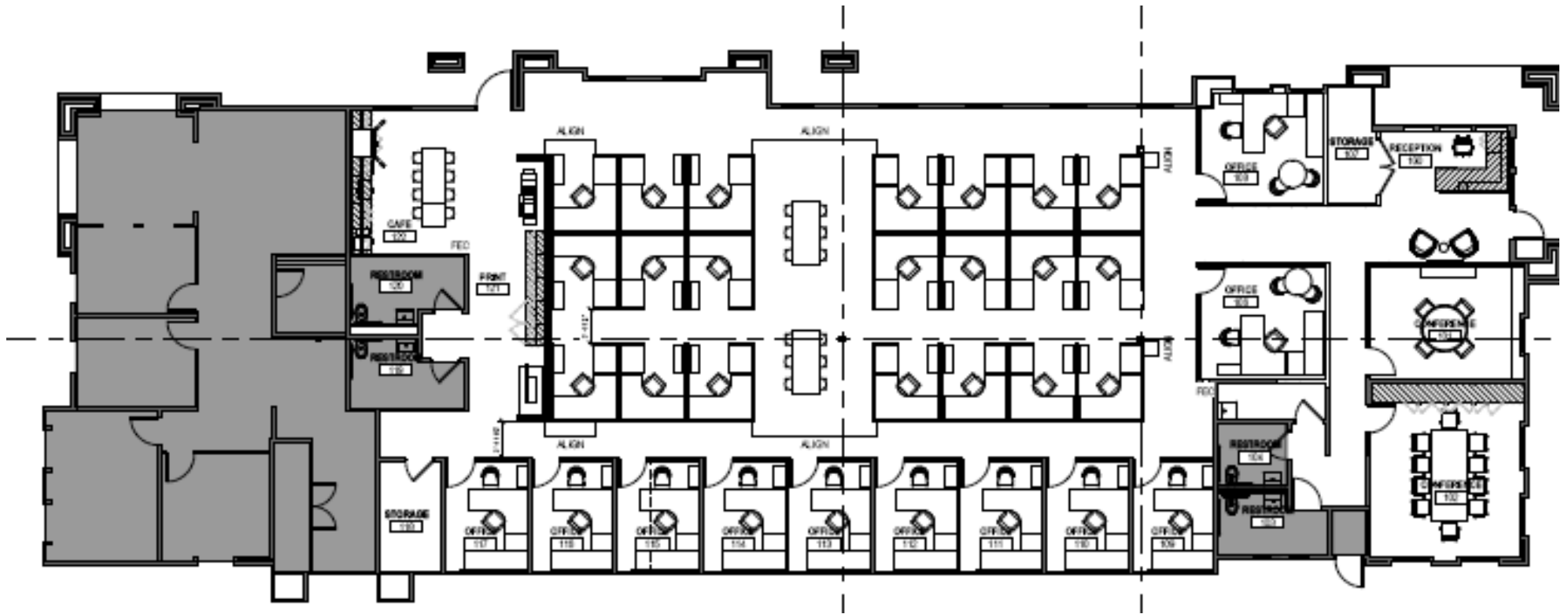


**Available Now**  
OCCUPANCY



**6 Covered Reserved Parking  
Spaces @ No Cost**  
PARKING

# PROPERTY FLOOR PLAN



# PROPERTY AERIAL MAP



8 MIN (3.7 MILES)



17 MIN (12.4 MILES)



Tucson International Airport  
29 MIN (18.7 MILES)

7458 N. La Cholla Blvd. Tucson, AZ 85741



**Thomas J Nieman**  
Broker (Principal)  
Cushman & Wakefield | PICOR  
Direct: +1 520 546 2728  
[tnieman@picor.com](mailto:tnieman@picor.com)

5151 E. Broadway Blvd, Suite 115  
Tucson, AZ 85711

**Morgan Relyea Colt**  
Executive Managing Director  
Direct: +1 713 331 1787  
Mobile: +1 713 702 1547  
[morgan.relyea@cushwake.com](mailto:morgan.relyea@cushwake.com)

1330 Post Oak Boulevard, Suite 2600  
Houston, TX 77056 | USA