

# OFFICE FOR LEASE

745 Craig Rd.  
Creve Coeur, MO 63141

**SKYLINE**  
COMMERCIAL REAL ESTATE

207 - 1,600 SF available  
Lease Rate: \$20/psf MG



## PROPERTY DETAILS

- Referrals will receive \$500 rent credit
- Convenient amenity-rich Creve Coeur location
- Free WiFi
- Newly updated common areas and restrooms
- Flexible lease terms

## 2024 DEMOGRAPHICS

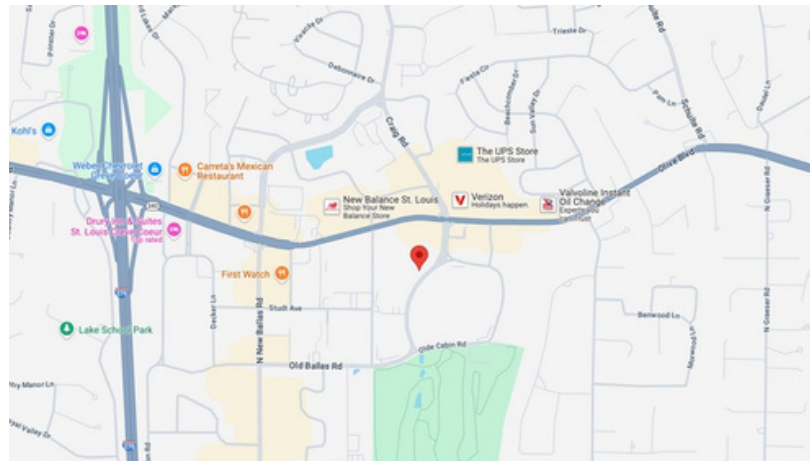
1 Mile | 3 Miles | 5 Miles

### Population

8,760 | 60,264 | 168,531

### Median Household Income

\$108,777 | \$115,736 | \$108,279



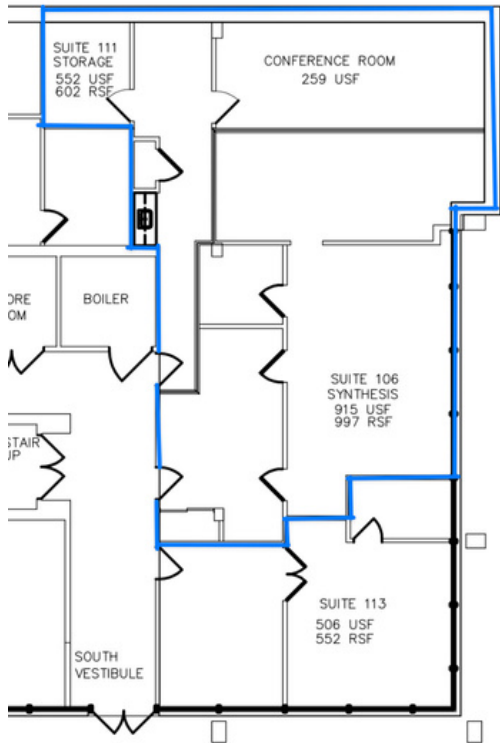
## CONTACT

Luke Grant  
314-602-3008  
Luke@skylinemore.com

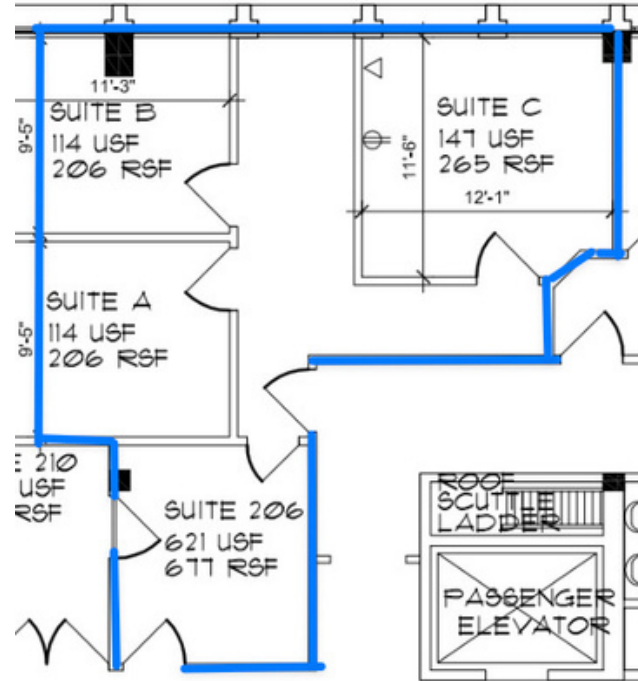
Jason Riegelsberger  
314-974-0698  
Jason@skylinemore.com

# FLOOR PLANS

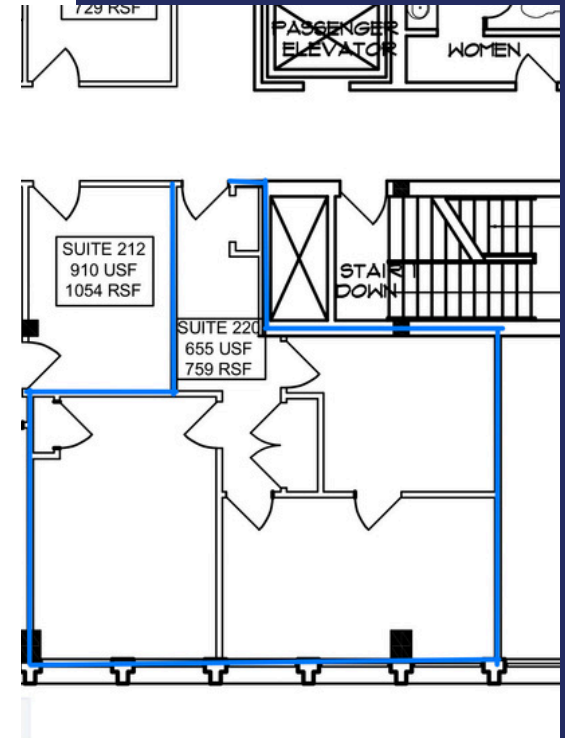
Suite 106  
1,600 RSF



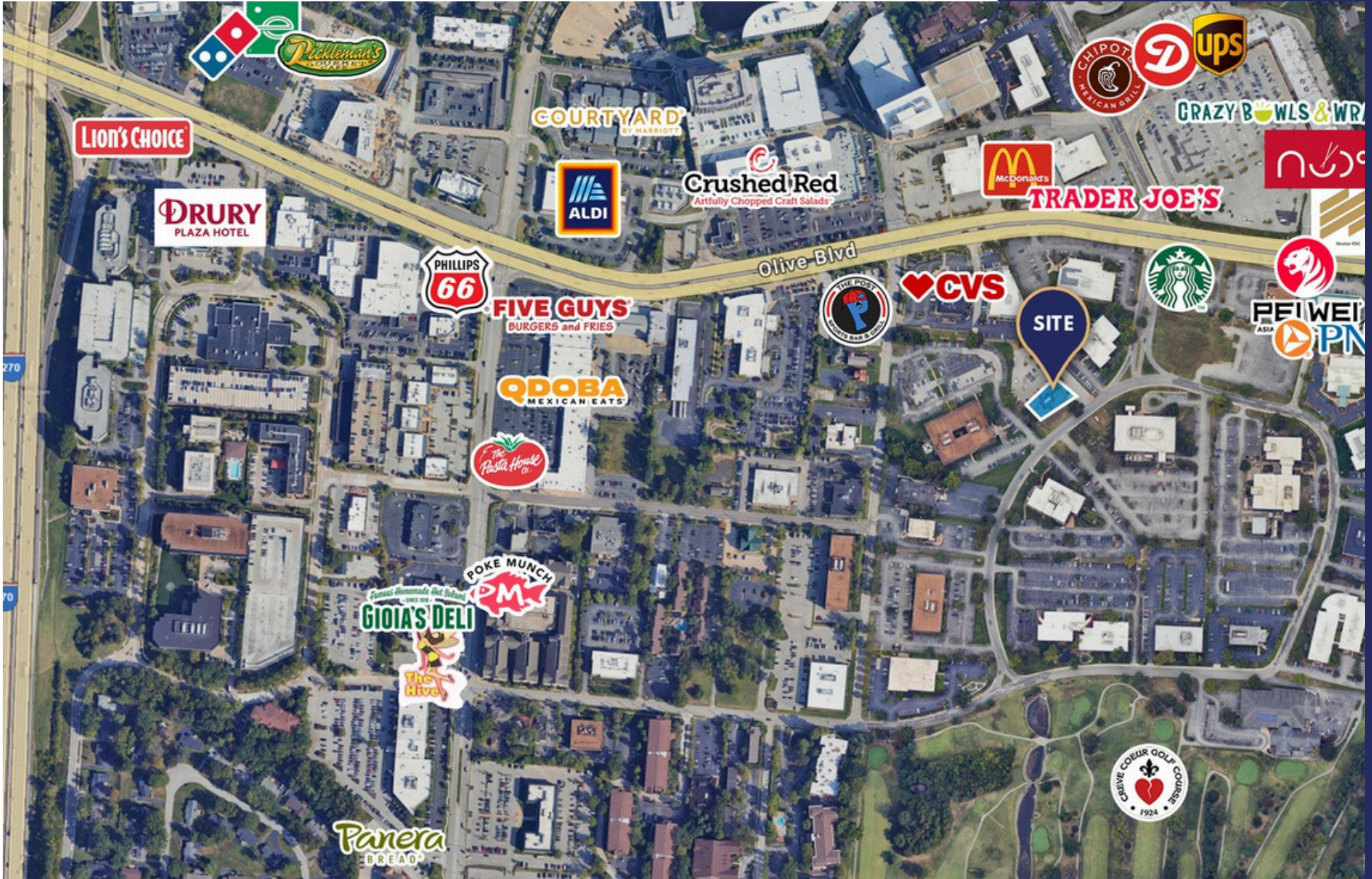
Suite 206  
677 RSF



Suite 220  
759 RSF



# TRADE AREA AERIAL



# PROPERTY PHOTOS

