



WAREHOUSE + OFFICE SPACE FOR LEASE
WITH EXCELLENT FREEWAY ACCESS IN A
DESIRABLE RENO LOCATION

±7,000
AVAILABLE SF

23'
CLEAR HEIGHT

NEGOTIABLE
LEASE RATE



FOR LEASE

SOUTHWEST COMMERCE CENTER I

895 E PATRIOT BLVD, SUITE 109 | RENO, NV 89511

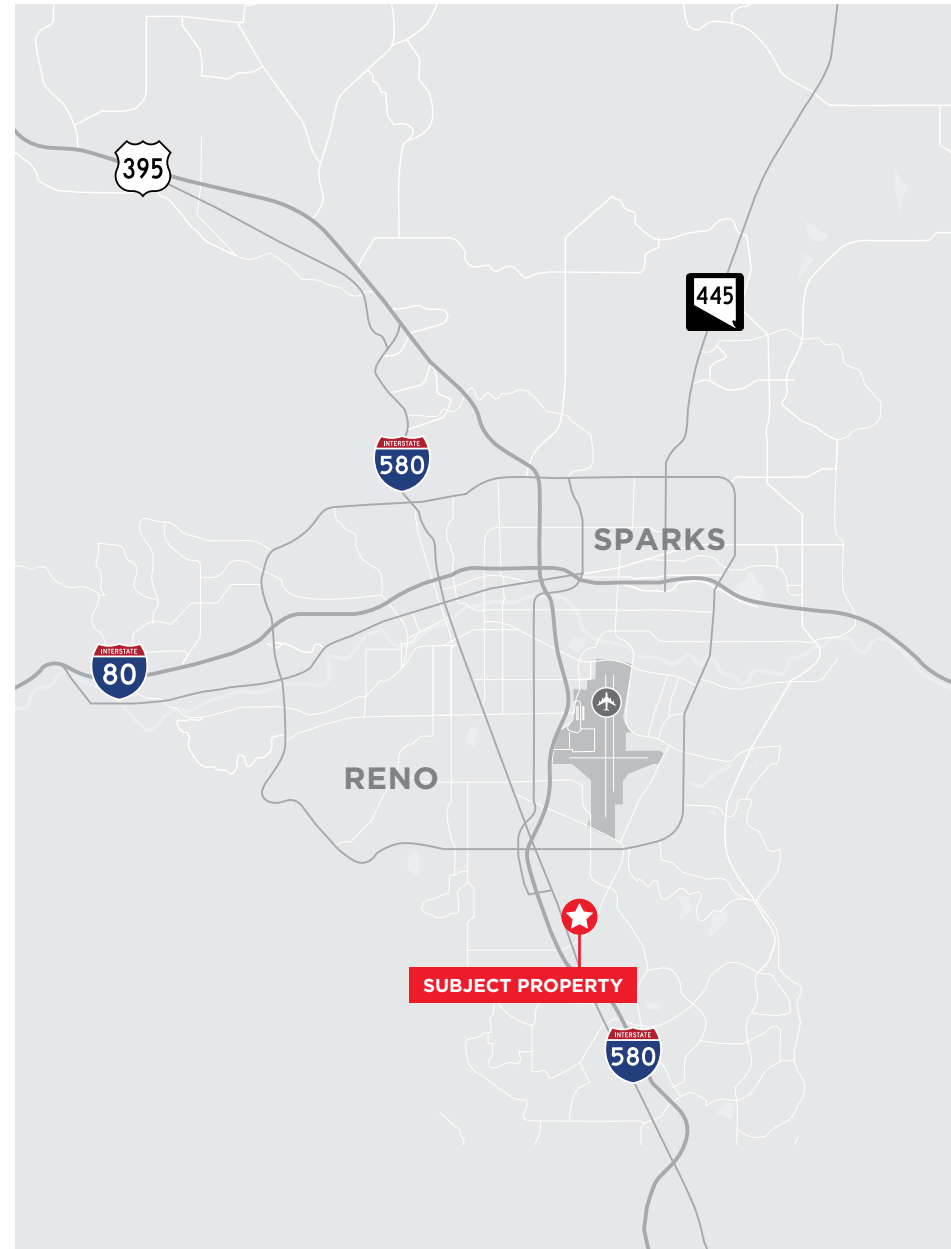
FOR LEASE

PROPERTY FEATURES

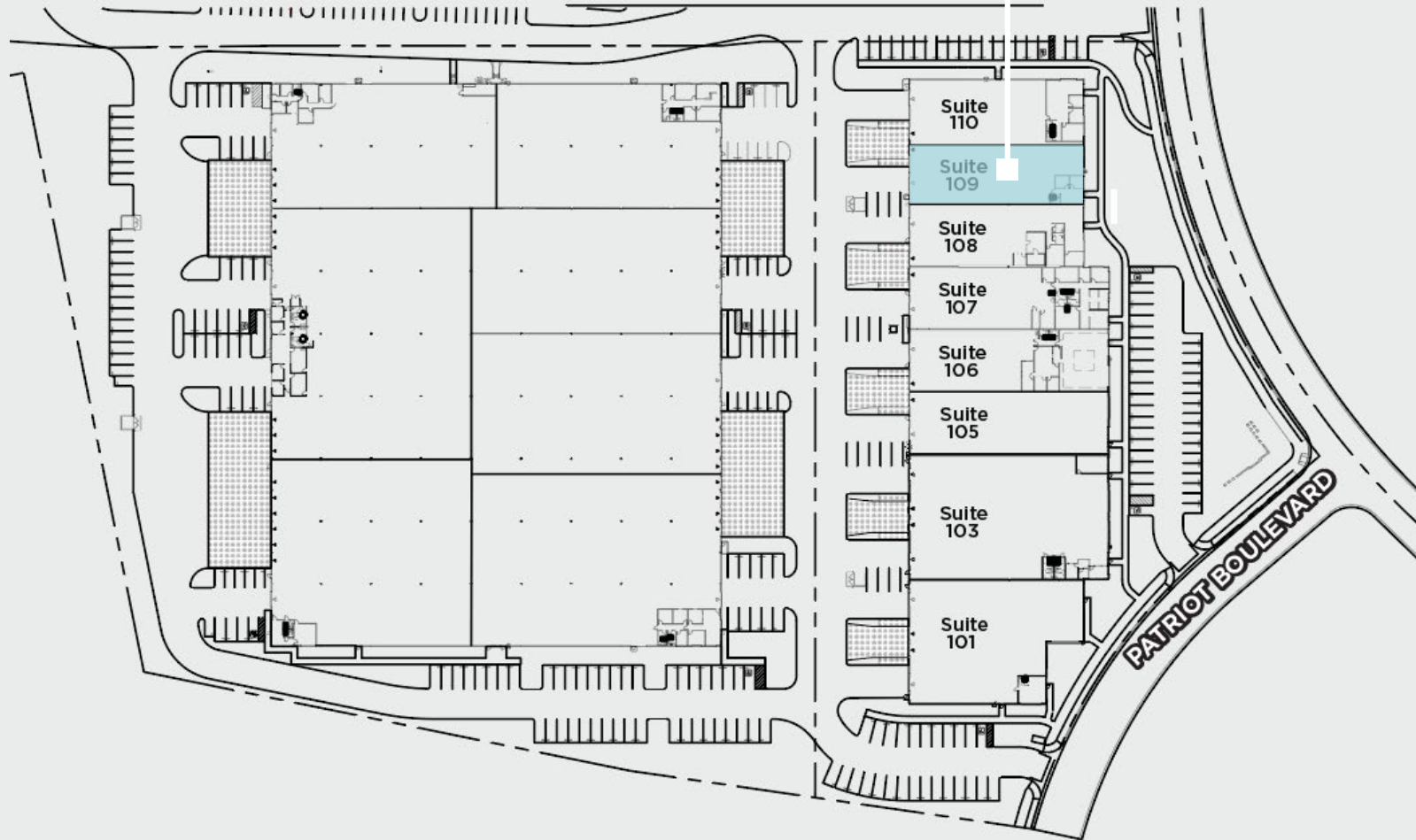
Lease Rate	Negotiable
Space	±7,000 SF building available ±1,500 SF office
Estimated OPEX	\$0.26/SF/Month
Availability Date	Now

Property Highlights

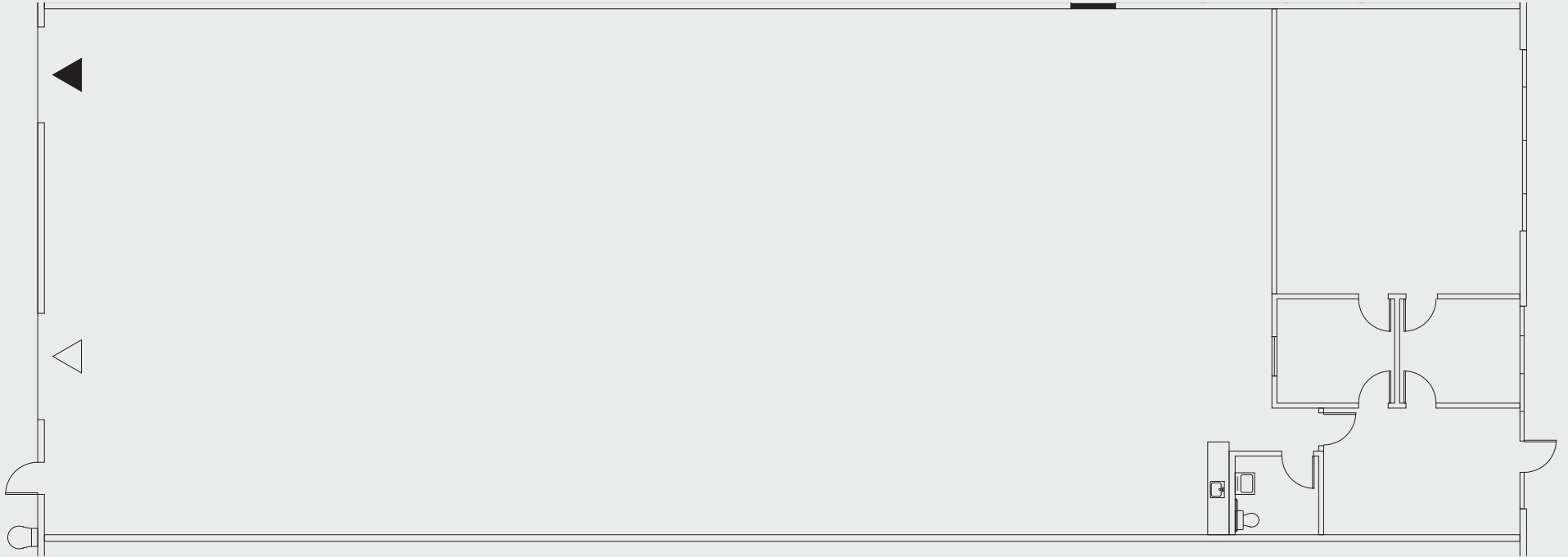
- ±73,500 Total Building SF
- ±1,500 SF office space
- 200 amps (TBV), 277/480V, 3-phase power
- 1 dock door
- 1 drive-in door
- 23' clear height
- .33 GPM/3,000 SF
- Great South Reno location
- Excellent access to HWY 580 and McCarran loop
- Professionally managed
- Project is 1MM SF



SUITE 109



FLOORPLAN



CORPORATE NEIGHBORS



FOR LEASE

SOUTHWEST COMMERCE CENTER I

895 E PATRIOT BLVD, SUITE 109 | RENO, NV 89511

FOR MORE INFORMATION, PLEASE CONTACT:

Mike Nevis, SIOR, CCIM
Vice Chairman
+1 775 470 8855
mike.nevis@cushwake.com
Lic. # S.0061759

Emily Jaenson
Industrial Specialist
+1 847 630 4739
emily.jaenson@cushwake.com
Lic. # S.0203962



[cushmanwakefield.com](https://www.cushmanwakefield.com)

©2026 Cushman & Wakefield. All rights reserved. The information contained in this communication is strictly confidential. This information has been obtained from sources believed to be reliable but has not been verified. NO WARRANTY OR REPRESENTATION, EXPRESS OR IMPLIED, IS MADE AS TO THE CONDITION OF THE PROPERTY (OR PROPERTIES) REFERENCED HEREIN OR AS TO THE ACCURACY OR COMPLETENESS OF THE INFORMATION CONTAINED HEREIN, AND SAME IS SUBMITTED SUBJECT TO ERRORS, OMISSIONS, CHANGE OF PRICE, RENTAL OR OTHER CONDITIONS, WITHDRAWAL WITHOUT NOTICE, AND TO ANY SPECIAL LISTING CONDITIONS IMPOSED BY THE PROPERTY OWNER(S). ANY PROJECTIONS, OPINIONS OR ESTIMATES ARE SUBJECT TO UNCERTAINTY AND DO NOT SIGNIFY CURRENT OR FUTURE PROPERTY PERFORMANCE. COE-PM-West-04.27.2026