

FOR LEASE

# 113 WATERWORKS SUITE 125

IRVINE, CA 92618



## *Property Highlights*

1,402 SF available

Ground-floor medical office suite

Move-in ready condition

Four (4) exam rooms

One (1) storage room

One (1) doctor's office

Two entrances to suite: lobby access & a private physician entrance

*For more  
information, contact*

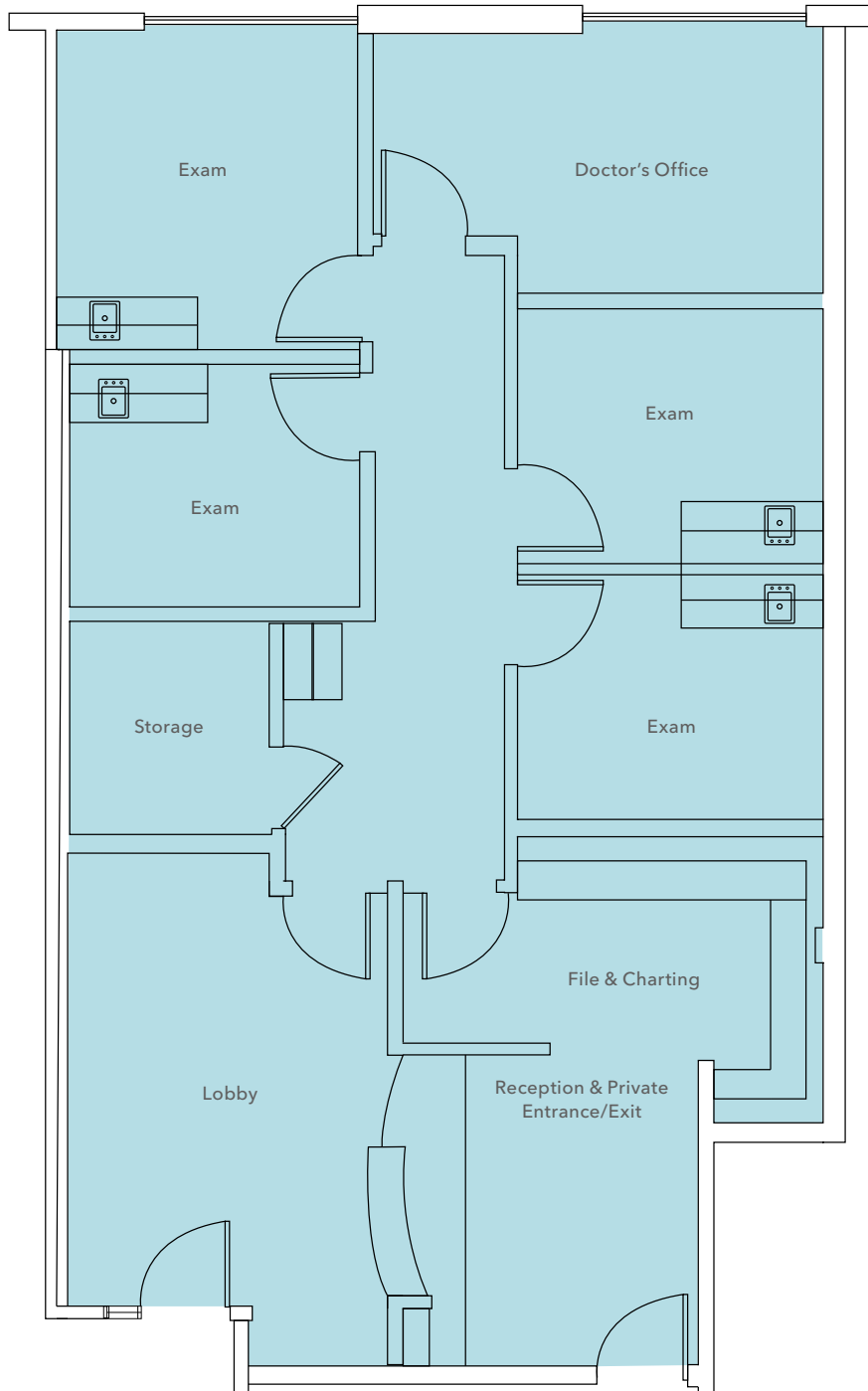
ERIC TSE  
949.557.5018  
eric.tse@kidder.com  
LIC N° 01476614

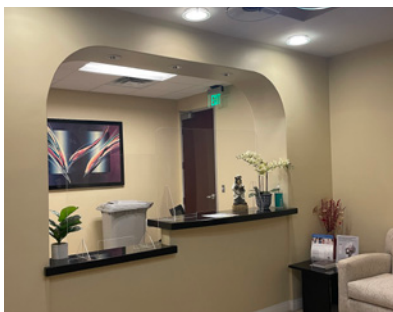
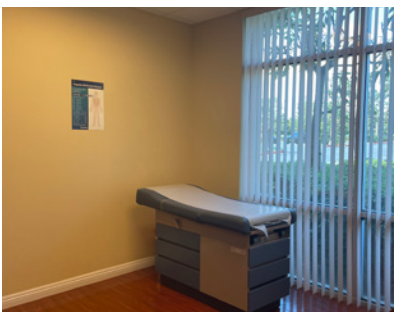
KIDDER.COM

This information supplied herein is from sources we deem reliable. It is provided without any representation, warranty, or guarantee, expressed or implied as to its accuracy. Prospective Buyer or Tenant should conduct an independent investigation and verification of all matters deemed to be material, including, but not limited to, statements of income and expenses. Consult your attorney, accountant, or other professional advisor.



# FLOOR PLAN





KIDDER.COM

This information supplied herein is from sources we deem reliable. It is provided without any representation, warranty, or guarantee, expressed or implied as to its accuracy. Prospective Buyer or Tenant should conduct an independent investigation and verification of all matters deemed to be material, including, but not limited to, statements of income and expenses. Consult your attorney, accountant, or other professional advisor.

