

Elm Business Park

High quality office spaces ready for occupancy - up to 8,985 sq. ft.

9426 / 9452 / 9470 / 9488 - 51 Avenue
Edmonton, Alberta



Elm Business Park

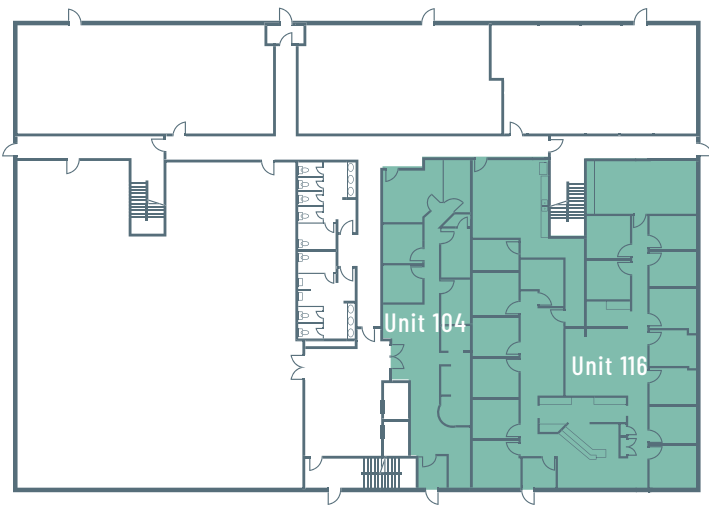
9426 / 9452 / 9470 / 9488 - 51 Avenue | Edmonton, AB

Building 4

9426 - 51st Avenue, Edmonton, AB

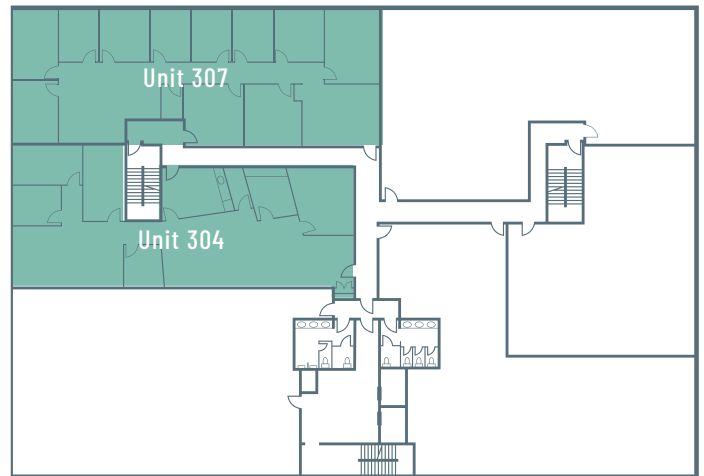
4 th Floor	Unit 402 4,630 SF	Unit 422 6,290 SF	
3 rd Floor	Unit 304 2,803 SF	Unit 307 3,254 SF	
2 nd Floor			
Main Floor	Unit 104 1,632 SF	Unit 116 4,744 SF	
Underground	Underground Parking		

Main Floor



Unit Type	Area	Notes
Unit 104	Office	1,632 sq. ft. Developed office space
Unit 116	Office	4,744 sq. ft. Developed office space Available May 1, 2026

3rd Floor



Unit Type	Area	Notes
Unit 304	Office	2,803 sq. ft. Developed office space
Unit 307	Office	3,254 sq. ft. Developed office space. Potential to demise into ±1,500 SF unit. Available May 1, 2026

Leasing Details

Net Rental Rate	Office Space:	\$16.00 - \$18.00 / sq. ft.
Operating Costs (2025)	Unit 104:	\$13.20 / sq. ft.
	Unit 116:	TBC
	Unit 304:	\$11.52 / sq. ft.
	Unit 307:	TBC
	Units 402 & 422:	\$11.30 / sq. ft.
Parking Ratio	3.5 stalls / 1,000 sq. ft.	
Parking Rate	Surface:	No charge
	Underground:	\$130.00 / month

3.5

Parking stalls / 1,000 sq. ft.

\$0.00

Surface parking

\$130.00

Underground parking

4th Floor



Unit Type	Area	Notes
Unit 402	Office	4,630 sq. ft. MOVE-IN READY
Unit 422	Office	6,290 sq. ft. MOVE-IN READY

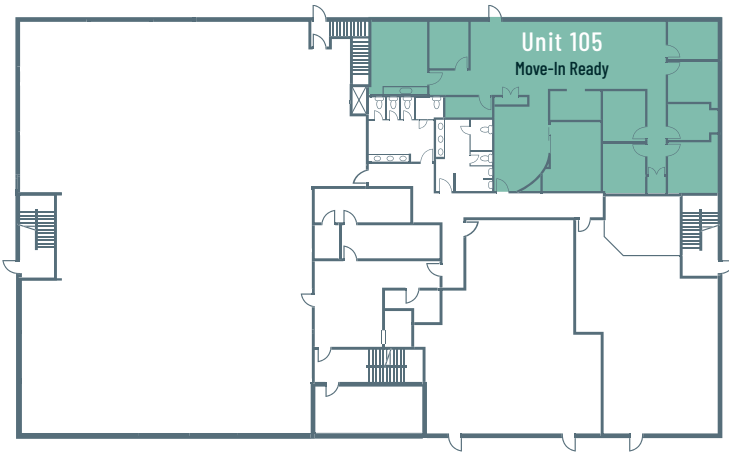
Elm Business Park

9426 / 9452 / 9470 / 9488 - 51 Avenue | Edmonton, AB

Building 3

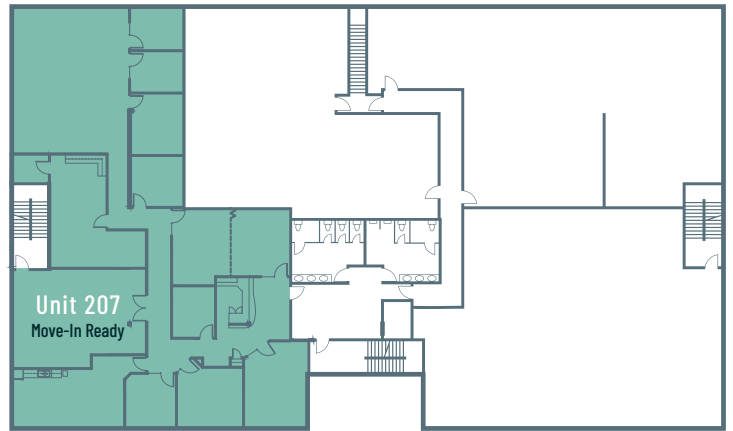
9452 - 51st Avenue, Edmonton, AB

Main Floor



Unit Type	Area	Notes
Unit 105	Office	3,136 sq. ft. MOVE-IN READY

2nd Floor



Unit Type	Area	Notes
Unit 207	Office	6,000 sq. ft. MOVE-IN READY

Leasing Details

Net Rental Rate	Office Space:	\$16.00 - \$18.00 / sq. ft.
Operating Costs (2025)	Unit 105:	\$10.82 - \$12.16 / sq. ft.
	Unit 207:	\$10.82 - \$12.16 / sq. ft.
Parking Ratio	3.5 stalls / 1,000 sq. ft.	
Parking Rate	Surface:	No charge
	Underground:	\$130.00 / month

3.5

Parking stalls / 1,000 sq. ft.

\$0.00

Surface parking

\$130.00

Underground parking

Building 2

9470 - 51st Avenue, Edmonton, AB

4 th Floor	
3 rd Floor	Unit 307 8,985 SF
2 nd Floor	
Main Floor	

Leasing Details

Net Rental Rate	Office Space:	\$16.00 - \$18.00 / sq. ft.
Operating Costs (2025)	Unit 307:	\$9.63 - \$10.84 / sq. ft.
Parking Ratio	3.5 stalls / 1,000 sq. ft.	
Parking Rate	Surface:	No charge
	Underground:	\$130.00 / month

3.5

Parking stalls / 1,000 sq. ft.

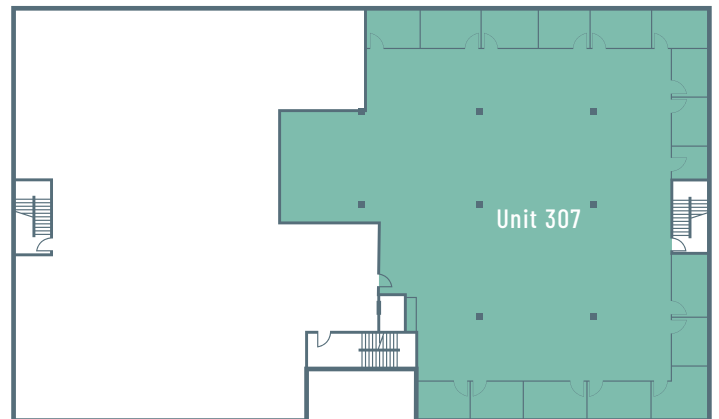
\$0.00

Surface parking

\$130.00

Underground parking

3rd Floor



Unit Type	Area	Notes
Unit 307	Office	8,985 sq. ft. Raw space

Elm Business Park

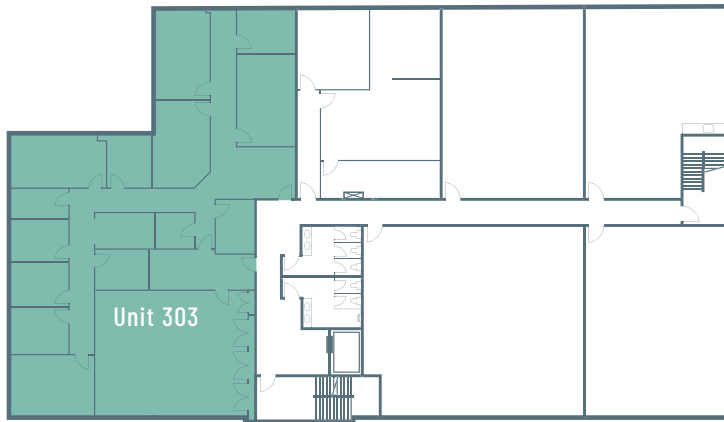
9426 / 9452 / 9470 / 9488 - 51 Avenue | Edmonton, AB

Building 1

9488 - 51st Avenue, Edmonton, AB

4 th Floor	
3 rd Floor	Unit 303 3,692 SF
2 nd Floor	
Main Floor	
Underground	Underground Parking

3rd Floor



Unit Type	Area	Notes
Unit 303	Office	3,692 sq. ft. Developed office spaces

Leasing Details

Net Rental Rate	Office Space:	\$12.00 - \$14.00 / sq. ft.
Operating Costs (2025)	Unit 303:	\$12.66 /sq. ft.
Parking Ratio	3.5 stalls / 1,000 sq. ft.	
Parking Rate	Surface:	No charge
	Underground:	\$130.00 / month

3.5

Parking stalls / 1,000 sq. ft.

\$0.00

Surface parking

\$130.00

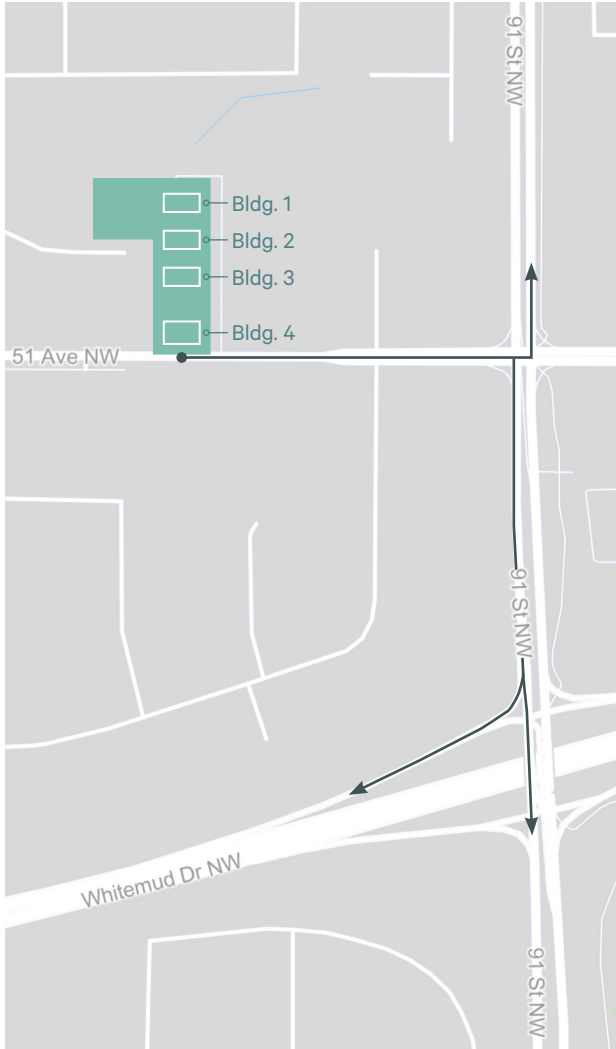
Underground parking



Elm Business Park

9426 / 9452 / 9470 / 9488 - 51 Avenue | Edmonton, AB

For Lease



Nearby Amenities

Services

- + Rona
- + Bubbles car wash
- + U Haul
- + Kal Tire
- + Hughes Car Wash
- + Esso
- + Shell
- + Strathcona Eco Station
- + Scotiabank
- + TD Canada Trust

Food & Restaurants

- + Fifendekel
- + Italian Centre Shop
- + Sawmill Prime Rib & Steak House
- + State & Main
- + Boston Pizza
- + Tim Hortons
- + Remedy Cafe
- + Starbucks
- + A&W
- + Peter's Drive-in
- + Wild Rose Cakes

Retail & Health

- + Fifendekel
- + London Drugs
- + Real Canadian Superstore
- + Mud, Sweat & Gears
- + Hudson's Bay
- + Crate & Barrel

Contact Us

Al Menon

Senior Vice President
+1 780 917 4638
al.menon@cbre.com

This disclaimer shall apply to CBRE Limited, and to all divisions of the Corporation ("CBRE"). The information set out herein (the "Information") has not been verified by CBRE, and CBRE does not represent, warrant or guarantee the accuracy, correctness and completeness of the Information. CBRE does not accept or assume any responsibility or liability, direct or consequential, for the Information or the recipient's reliance upon the Information. The recipient of the Information should take such steps as the recipient may deem necessary to verify the Information prior to placing any reliance upon the Information. The Information may change and any property described in the Information may be withdrawn from the market at any time without notice or obligation to the recipient from CBRE.